

IMPORTANT INFORMATION

WARNING

Do not rest your foot on the brake pedal while the vehicle is in motion.

WARNING

Never allow the vehicle to coast (freewheel) with the engine turned off. The engine must be running to provide full braking assistance. The brakes will still function with the engine off, but far more pressure will be required to operate them.

WARNING

If the red brake warning lamp illuminates, safely bring the vehicle to a stop, as quickly as possible and seek qualified assistance.

WARNING

Never place non-approved floor matting or any other obstructions under the brake pedal. This restricts pedal travel and braking efficiency, and may cause a crash.

Driving through heavy rain or water can have an adverse effect on braking efficiency. Under such circumstances, it is recommended that you lightly apply the brakes intermittently, to dry the brakes.

WARNING

Do not pump the brake pedal at any time; this will interrupt operation of the system and may increase stopping distances.

BRAKE WARNING LAMPS

The ABS warning lamp illuminates briefly when the ignition is turned on. See **61, ANTI-LOCK BRAKING SYSTEM (ABS) (AMBER)**.

If this amber warning lamp illuminates when driving (accompanied by an associated warning message), drive with extra caution, avoid heavy braking where possible, and seek qualified assistance as soon as possible.

STEEP SLOPES

If the vehicle is stationary on a steep, slippery slope, it may begin to slide even with the brakes applied. This is because without wheel rotation, the ABS cannot determine vehicle movement.

To counteract this, briefly release the brakes to allow some wheel rotation. Then re-apply the brakes to allow ABS to gain control.

EMERGENCY BRAKE ASSIST (EBA)

If the driver rapidly applies the brakes, EBA automatically boosts the braking force to its maximum, in order to bring the vehicle to a halt as quickly as possible. If the driver applies the brakes slowly, but conditions mean that ABS operates on the front wheels, EBA will increase the braking force in order to apply ABS control to the rear wheels.

EBA stops operating as soon as the brake pedal is released.

The amber brake warning lamp illuminates briefly when the ignition is turned on. See **60, BRAKE (AMBER)**.

A fault with the EBA system is indicated by the amber brake warning lamp illuminating and an associated warning message. Gently and safely stop the vehicle and seek qualified assistance.

ELECTRONIC BRAKE FORCE DISTRIBUTION (EBD)

EBD controls the balance of braking forces supplied to the front and rear wheels, in order to maintain maximum braking efficiency.

If the vehicle has a light load (only the driver in the vehicle for example), EBD will reduce the braking force applied to the rear wheels. If the vehicle is heavily laden, EBD will allow greater braking force to the rear wheels.

The red brake warning lamp illuminates briefly when the ignition is turned on. See **59, BRAKE (RED)**.

A fault with the EBD system is indicated by the red brake warning lamp illuminating and an associated warning message. Gently and safely stop the vehicle and seek qualified assistance.

ELECTRIC PARKING BRAKE (EPB)

⚠ WARNING

Do not rely on the parking brake to hold the vehicle stationary if the brake warning lamp is illuminated or the EPB warning lamp is flashing. Seek qualified assistance urgently.

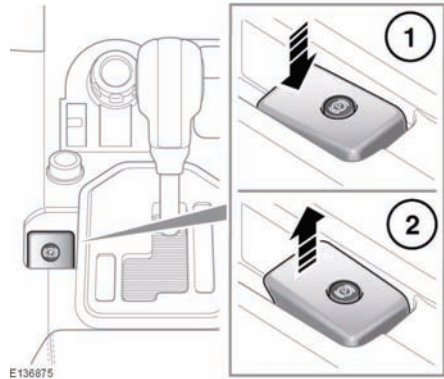
NOTICE

The parking brakes operates on the rear wheels. Therefore, secure parking of the vehicle is dependent on being on a hard and stable surface.

NOTICE

Do not rely on the parking brake to operate effectively, if the rear wheels have been immersed in mud or water.

Note: *If the vehicle is used in severe off-road conditions (e.g. wading, deep mud, etc.), additional maintenance and adjustment of the parking brake will be required. Consult your Land Rover Retailer/Authorized Repairer.*



The switch which operates the parking brake is mounted on the center console to the left side of the gear selector.

To disengage the parking brake (1): With the ignition system on or with the engine running, apply the foot brake and press the parking brake switch down.

If the parking brake is applied while the vehicle is stationary and **D** or **R** is selected, applying the throttle will automatically release the parking brake.

The parking brake is also automatically released when the gear selector is moved from the **P** position.

If the parking brake is inadvertently applied when the vehicle is moving at above 1.8 mph (3 km/h), **Caution! Park Brake Applied** is displayed in the message center, the warning indicator in the instrument panel will illuminate and a warning chime will sound.

If the parking brake is applied while the vehicle is moving, releasing the switch will disengage the parking brake. The parking brake cannot be applied when the vehicle is moving, if the accelerator pedal is pressed.

Note: *If the vehicle is in motion, the parking brake should only be used as an emergency brake.*

NOTICE

Always apply the parking brake when the vehicle is parked.

To engage the parking brake (2): Pull the parking brake switch upwards and release. The switch will return to the neutral position.

The Parking brake warning lamp on the instrument panel will illuminate, see **59**, **PARKING BRAKE (RED)**.

The Drive Away Release feature allows the parking brake to release automatically as the vehicle is driven away.

The warning lamp in the instrument panel will remain on for a short time, if the parking brake is applied when the ignition system is reverted to the convenience mode.

If a fault in the system is detected, **Park Brake Fault** or **Cannot Apply Park Brake** will be displayed in the message center. Seek qualified assistance as soon as possible.

If the battery has been discharged or disconnected, **Apply Foot And Park Brake** will be displayed in the message center when the ignition is next switched on. Depress the foot brake and pull the parking brake switch up to apply the parking brake. This is required to reset the parking brake system. The parking brake will now function correctly.