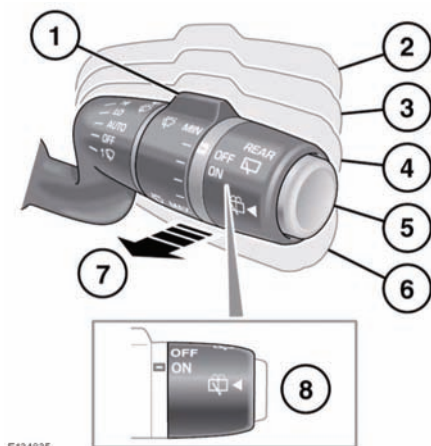


WIPER OPERATION



E134835



Feature (1.) can be enabled/disabled by your Land Rover Retailer/Authorized Repairer.

1. Intermittent wipe delay: Rotate the control to adjust the intermittent period. The intermittent delay period will vary and is controlled by either vehicle speed or a rain sensor. The control must be in position (4) to be operational.
2. High speed wipe.
3. Low speed wipe.
4. AUTO or intermittent wipe: AUTO is controlled by either a rain sensor or vehicle speed. In this position, the rain sensor becomes active and will determine when the wipers are required to operate.
If your rain sensor is not configured by your Retailer/Authorized Repairer, intermittent wipe will operate in conjunction with the setting of control (1).

5. Rear window wash/wipe: Press and hold to operate the rear washer and wiper. The wiper will operate for two further wipes after the button is released. After a few seconds a drip wipe process will clear any residual water.
6. Single wipe of windshield, or hold down for further continuous wipes.
7. Windshield wash/wipe: Pull and hold to operate the front washers and wipers. The wipers will operate for three further wipes after the stalk is released. After a few seconds a drip wipe will clear any residual water.
8. Rear wiper: To operate, rotate to **ON**.

NOTICE

Do not operate the windshield wipers on a dry screen.

NOTICE

In freezing or very hot conditions, ensure that the wipers have not stuck to the glass.

NOTICE

Remove any snow, ice or frost from the screen, around the wiper arms and blades and the screen scuttle, before operating the wipers.

Note: *If the wiper blades become stuck or jammed, an electronic cut-out may temporarily halt wiper operation. If this happens, switch off the wipers and the ignition. Clear any obstructions and free the wiper blades, before attempting to switch on the ignition.*

SPEED-DEPENDENT MODE

If vehicle speed drops below 5 mph (8 km/h) with the wipers operating, the wipers will switch to the next lowest speed. When vehicle speed increases to over 5 mph (8 km/h), the original wiper speed setting is restored automatically.

Speed-Dependent Intermittent Mode:

In vehicles not fitted with a rain sensor, the frequency of intermittent wipe adjusts according to vehicle speed.

The intermittent delay period can be adjusted via the collar (1), but will also reduce automatically as vehicle speed increases.



Both of these features can be enabled or disabled by your Land Rover Retailer/Authorized Repairer.

The headlamp power wash will operate on every fifth operation of the screen washer, provided the headlamps are still switched on and approximately 10 minutes have elapsed since the last headlamp wash.

Switching the headlamps or ignition off and back on again, will reset the cycle.

Note: *The headlamp washers are inhibited when the washer fluid reservoir level is low.*

RAIN SENSOR

NOTICE

Ensure that the wipers are switched off before entering a car wash. If the rain sensitive wipers operate during the car washing process, damage may occur to the wiper mechanism.

The rain sensor is able to detect the presence and amount of rain/dirt/snow on the windshield and automatically activates the windshield wipers accordingly. Static droplets may not be detected on initial start-up, use a single wipe to clear the screen.

To activate the rain sensitivity wipers, move the wiper stalk to the rain sensor position (4) and adjust the rain sensitivity control (1) as required. When rain sensitive wipers are activated and when sensitivity is increased, a single wipe will operate.

HEADLAMP WASHERS

If the headlamps are on, and there is sufficient liquid in the washer reservoir, operating the screen wash will also power-wash the headlamps.