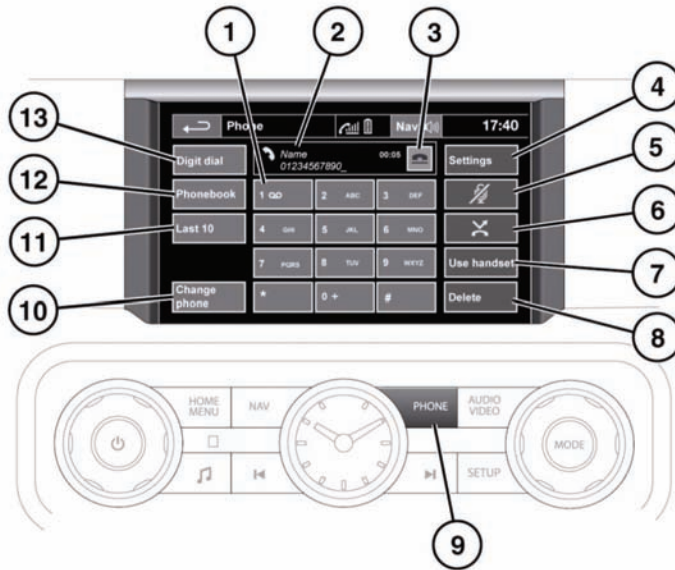


## TELEPHONE SYSTEM OVERVIEW



E135925

### **⚠ WARNING**

**Do not adjust the touch screen controls, or allow the system to distract the driver, while the vehicle is moving. Driver distraction can lead to accidents, causing serious injury or death.**

1. Touch and hold to retrieve your Voice mail.
2. Status display. Displays the name and/or number dialed and call duration.
3. Call Connect/Disconnect icons. Touch to send/accept or end/reject a call.
4. **Settings:** Touch to access Voice mail, Answer options and Phone options.
5. Mute microphone: Touch to initiate Privacy mode. While selected, the caller will not hear you talking.
6. Auto reject: Touch to activate/deactivate. When active, any incoming calls will be rejected or diverted to voice mail (depending on mobile phone settings).
7. **Use handset:** Touch to switch the call to your mobile phone.
8. **Delete:** Touch and release to delete the last entered digit. Touch and hold to delete the whole entered number.
9. **PHONE:** Press for shortcut to the touch screen Phone menu (applicable to Bluetooth® phones only).
10. **Change phone:** Touch to search for a new phone or change to another paired phone.
11. **Last 10:** Touch to access the last 10 dialed, received and missed calls.
12. **Phonebook:** Touch to access the downloaded phonebook.

**13. Digit Dial:** Touch to access Digit Dial mode.

**Note:** When a call is incoming, outgoing or active, the name or number is also displayed in the message center.

#### Microphone location

The microphone for Telephone and Voice control is located behind a grille in the overhead console and directed towards the driver's seat. The microphone may not detect the voice of someone sitting in a passenger seat.

To optimize microphone performance, make sure the fascia air vents are not directed at the overhead console and that the heating and ventilation blower is not running at high speed.

## BLUETOOTH® INFORMATION



Bluetooth® is the name for short-range radio frequency (RF) technology that allows electronic devices to communicate wirelessly with each other.

The Land Rover Bluetooth® system supports Bluetooth® Hands-Free Profile (HFP), Advanced Audio Distribution Profile (A2DP) and Audio Video Remote Control Profile (AVRCP).

**Note:** HFP and A2DP/AVRCP profiles can be connected independently, so a phone can be connected via one, while a media device can be connected via the other, at the same time.

Before making use of the vehicle's Bluetooth® phone system, your Bluetooth® phone must be paired and connected to the vehicle system. This is done using one of two methods; via your phone to the vehicle or from the touch screen to your phone. If one of these methods is not successful, try the other option.

Each time the ignition is switched on the system will attempt to connect with the last connected phone.

As mobile phones have a wide range of audio and echo characteristics, it may take a few seconds for the vehicle system to adapt and deliver optimum audio performance. To achieve this, it may be necessary to reduce the in-vehicle volume and ventilation fan speed slightly.

## TELEPHONE SAFETY

### ⚠ WARNING

**Use of your mobile telephone while you are driving is dangerous as it diverts attention from the traffic situation. If you wish to use your telephone, stop at an appropriate place where you are not endangering or inconveniencing other vehicles.**

### ⚠ WARNING

**Drivers should only talk on their cell phones when it is safe to do so and when such use will not distract the driver from the road.**

### ⚠ WARNING

**Drivers should never text message while driving. Texting while driving diverts attention from the road and can lead to accidents, causing serious injury or death.**

### ⚠ WARNING

**Switch off your telephone in areas with a high explosion risk. This includes filling stations, garages, fuel storage areas or chemical factories, as well as places where the air contains fuel vapor (such as an open vehicle hood), chemicals or metal dust. The telephone could trigger an explosion, or cause a fire.**

## **⚠ WARNING**

The functioning of cardiac pacemakers or hearing aids may be impaired when the phone is in use. Check with a doctor or manufacturer whether any such devices you or your passengers are using, are sufficiently protected against high-frequency energy.

The Health Industry Manufacturers' Association recommends that a minimum separation of 6 inches (15 centimeters) is maintained between a wireless phone antenna and a pacemaker, to avoid potential interference with the pacemaker. These recommendations are consistent with the independent research by, and recommendations of, Wireless Technology Research.

## **⚠ WARNING**

Always stow your mobile phone securely. In an accident, loose items can cause injury.

## **TELEPHONE COMPATIBILITY**

Please refer to the Ownership section of the Land Rover website at [www.landrover.com](http://www.landrover.com), for a list of compatible phones.

***Note:** The Bluetooth® equipped phones listed on [landrover.com](http://landrover.com) have been tested for compatibility with Land Rover vehicles. Performance will vary, based on the phone's software version, battery condition, coverage and your network provider. Phones are warranted by their manufacturer, not Land Rover.*

If the mobile phone supports Bluetooth® Hands Free Profile 1.5 (HFP 1.5), additional features will be displayed on the vehicle touch screen, such as battery meter, signal strength and network operator.

## **PAIRING AND CONNECTING USING THE MOBILE PHONE**

***Note:** The process of pairing and connecting your phone with the vehicle using the mobile phone will vary depending on the type of mobile phone used.*

1. Switch the ignition system on and ensure that the touch screen is active.
2. From the home menu, select **Phone**.
3. If no phone is connected, select **Search new**. Otherwise select **Change phone** and then **Search new**.
4. Select **Device to vehicle** option.

***Note:** The vehicle's Bluetooth® system is discoverable for only 3 minutes.*

5. Using the mobile phone, search for Bluetooth® devices. On some phones, this is referred to as new paired device. See the phone's operating instructions for further information.
6. When the vehicle's Bluetooth® system is discovered, begin the pairing process using your mobile phone and follow any directions shown on the touch screen. Select **Yes** when prompted, to confirm the pairing.

The phone and then the vehicle system will ask for a PIN (Personal Identification Number). Each time you are prompted, enter the PIN (Personal Identification Number) of your choice and select **OK** to confirm.

7. Once your phone is paired and connected to the system, a confirmation message will be displayed before switching to the Digit Dial screen.

**Note:** Some mobile phones require the Bluetooth® pairing to be set as 'authorized' or 'trusted' in order to automatically connect. Please refer to your phone's operating instructions for further information.

## PAIRING AND CONNECTING USING THE TOUCH SCREEN

1. Switch on your mobile phone's Bluetooth® connection. Make sure that your mobile phone is in Bluetooth® discoverable mode, sometimes referred to as find me mode (see your phone's operating instructions for more information).
2. Switch the ignition system on and ensure the touch screen is active.
3. From the home menu select **Phone**.
4. If no phone is connected, select **Search new**. Otherwise select **Change phone** and then **Search new**.
5. Select **Vehicle to device** option.

**Note:** If more than 4 phones are detected, it may be necessary to use the scroll bar to see the entire list.

6. Identify your phone from the displayed list and select the corresponding **Pair and connect** option.

**Note:** If more than 4 phones are detected, it may be necessary to use the scroll bar to see the entire list.

7. When prompted, enter the PIN code into your phone. See your phone's operating instructions for more information.
8. Once your phone is paired and connected to the system, a confirmation message will be displayed before switching to the Digit Dial screen.

**Note:** Due to the duration of a Bluetooth® search, it is advised that the timeout to home screen feature is switched off before attempting to search for Bluetooth® devices. See **106, SCREEN SETTINGS**.

## CHANGING THE CONNECTED PHONE

Up to 10 mobile phones can be paired with the vehicle in the same way. However, only one can be connected as a phone at any one time.

To connect a different paired phone to the vehicle, follow the steps below:

1. From the home menu, select **Phone**.
2. A menu will appear. Select **Change phone**.
3. Identify the phone from the displayed list and select the corresponding **Connect** option.
4. Once the phone is connected to the system, a confirmation message will be displayed before switching to the Digit Dial screen.

## TELEPHONE SYSTEM ICONS



Connect icon. Use to send or accept a call



Disconnect icon. Use to end or reject a call.



Phone signal strength indicator.



Phone battery level indicator.



Phone device icon - indicates that a detected Bluetooth® device is a phone.



Media player device icon - indicates that a detected Bluetooth® device is a media player.

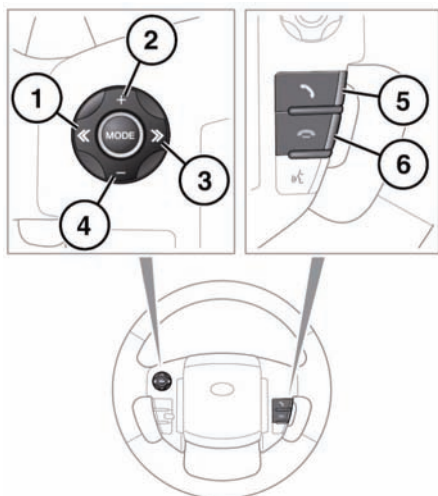
# Telephone



Scroll bar arrows. Use to scroll up or down lists of detected phones, calls or phonebook entries.



## STEERING WHEEL CONTROLS



E 135926

1. Press to scroll up a displayed list.
2. Press to increase volume when in a call.
3. Press to scroll down a displayed list.
4. Press to decrease volume when in a call.
5. Press and release to access last 10 dialed list or dial a number/contact. Press and hold to access phonebook list view.
6. Press to end a call or to reject an incoming call.

**Note:** When scrolling through a phonebook or last 10 list, each contact is also displayed in the message center.

## CALL VOLUME

The phone call volume is operated by the audio system's volume control.

If the audio system is in use when a phone call is active, the audio system source is suppressed for the duration of the call.

## DIALING

Once your phone is connected to the vehicle's system, Digit Dial is the default screen in Phone mode.

Using the on-screen keypad, enter the required number and touch the connect icon to send.

**Note:** When entering a number, you can change the phone number shown on the touch screen using the **Delete** button. A momentary touch erases a single digit, a long touch erases the complete number.

## PHONEBOOK

Contacts stored in the memory of a paired phone can be automatically downloaded to the vehicle's phonebook each time the phone is connected to the system. See **138**,

### TELEPHONE COMPATIBILITY.

Certain mobile phones store the phonebook in two different areas, the SIM card and the phone memory. The vehicle system will access only those numbers stored in the phone memory.

To access contacts from the phonebook:

1. From the Phone menu, select **Phonebook**.
2. Using the alpha keys, type the name of the contact you want to search for. Repeated selections of the same key scrolls through the letters displayed on the keys.
3. If the desired contact is shown in the view, they can be dialed by pressing the connect button. Alternatively, select **List** to access the phonebook list view.

4. In the Phonebook list view, touch to call. If a contact has more than one number stored, touch to access the additional numbers.

**Note:** *It may be necessary to use the scroll bar to see the entire list.*

There are also options to view more contact information, by selecting the corresponding **i** key.

If your phone supports contact type data, you will be able to see a contact type icon in the vehicle's phonebook directory. These can be seen on the right-hand side of each contact in the directory and will indicate one of the following types:



Default.



Mobile.



Home.



Work.

## LAST 10 OPTION

Allows view of the last 10 calls made, received or missed.

**Note:** *The vehicle will display the list in the order the calls were recorded. If this information is not available, they will be displayed as they are sent from the mobile phone. Some phones may arrange the list in reverse or other order.*

## SETTINGS

Depending on vehicle specification, there are up to 3 options in the **Settings** menu:

- The **Voice mail** option allows you to save or edit the number of the voice mail server for your specified network provider.
- The **Answer options** allows you to enable/disable the Auto answer feature and, if Voice control is fitted, the Caller announce feature.

**Note:** *With the Caller announce feature turned on and a compatible Bluetooth® phone connected, the voice control system will announce the incoming caller's name if stored in the vehicle phonebook. See **138, TELEPHONE COMPATIBILITY.***

- The **Phone options** allows you to set your desired ring tone either to the preset car ring tone, or to the handset ring tone. The Phone options also gives you access to the Phonebook options. See **138, TELEPHONE COMPATIBILITY.**

## DECLARATION OF CONFORMITY

### Export controls

This product contains commodities, technology or software exported from the United States in accordance with the Export Administration regulations. Diversion contrary to U.S. or Canadian law is prohibited.

### United States of America

This device complies with part 15 of the FCC Rules. Operation is subject to the following two conditions:

- (1) this device may not cause harmful interference, and
- (2) this device must accept any interference received, including interference that may cause undesired operation

### Canada

IC - RSS-210:

Operation is subject to the following two conditions:

- (1) this device may not cause interference, and
- (2) this device must accept any interference, including interference that may cause undesired operation of the device.

This equipment complies with FCC/IC radiation exposure limits set forth for uncontrolled equipment and meets the FCC radio frequency (RF) Exposure Guidelines in Supplement C to OET65 and RSS-102 of the IC radio frequency (RF) Exposure rules. This equipment has very low levels of RF energy that is deemed to comply without maximum permissive exposure evaluation (MPE).

But it is desirable that it should be installed and operated with at least 8 inches (20 cm) and more between the radiator and person's body (excluding extremities: hands, wrists, feet and ankles).

USA FCC ID: A269ZUA130

Canada IC: 700BIAM2101

Changes or modifications not expressly approved by the party responsible for compliance could void the user's authority to operate the equipment.

**Note:** *This equipment has been tested and found to comply with the limits for a Class B digital device, pursuant to Part 15 of the FCC Rules. These limits are designed to provide reasonable protection against harmful interference in a residential installation.*

*This equipment generates, uses and can radiate radio frequency energy and, if not installed and used in accordance with the instructions, may cause harmful interference to radio communications. However, there is no guarantee that interference will not occur in a particular installation.*

*If this equipment does cause harmful interference to radio or television reception, which can be determined by turning the equipment off and on, the user is encouraged to try to correct the interference by one or more of the following measures:*

- \* *Reorient or relocate the receiving antenna.*
- \* *Increase the separation between the equipment and the receiver.*
- \* *Connect the equipment into an outlet on a circuit different from that to which the receiver is connected.*
- \* *Consult a Land Rover Retailer/Authorized Repairer or an experienced radio/TV technician for help.*