

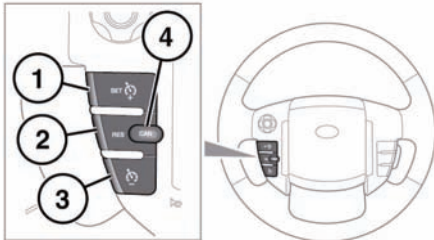
Cruise control

USING CRUISE CONTROL

Note: Cruise control is not available when using Hill Descent Control or when a Terrain Response special program has been selected.

Note: Do not use cruise control when driving off-road.

Note: Do not use cruise control with **SPORT** mode selected.



E134853

1. **SET+** switch. Press to adopt current speed as the set speed, or to increase the set speed.
2. **RES** switch. Press to resume cruise control at the previous set speed.
3. **-** switch. Press to decrease set speed.
4. **CAN** switch. Press to cancel cruise control operation without erasing memorized speed.

Cruise control will also be cancelled if the brake pedal is pressed, the gear selector is moved to **N**, or if HDC or DSC are activated.

Note: The set speed will not be erased by pressing the cancel switch. The set speed can only be erased by switching off the ignition.

Cruise control will also be suspended if the brake pedal is pressed, the gear selector is moved to **N**, or if HDC or DSC are activated.

To resume cruise control at the previous set speed, press the resume switch (2).

SETTING VEHICLE SPEED

⚠ WARNING

The driver must always ensure that a safe speed is maintained within the speed limit, taking account of traffic and road conditions.

Do not use cruise control in heavy traffic or conditions where a constant road speed cannot be safely maintained, such as on roads that are winding, wet with rain or snow, slippery or unpaved.

Note: When setting the cruise control to the speed limit, it is important to remember that it is possible for the vehicle speed to increase when traveling downhill. This may result in the vehicle speed exceeding the speed limit.

Note: Cruise control can only be engaged at speeds in excess of 18 mph (30 km/h).

Accelerate until the desired speed is reached, then press the **SET+** switch until the warning lamp illuminates. This sets the vehicle speed into the system's memory. Cruise control will now maintain that speed.



The cruise control warning lamp will illuminate to confirm cruise control is operational. Speed can be increased using the accelerator pedal as normal. As soon as the accelerator pedal is released, the vehicle speed will return to the set cruising speed.

Note: If the accelerator pedal is pressed for more than 5 minutes, cruise control cancels.

CHANGING THE CRUISE SPEED

Decreasing speed

To decrease the cruising speed, press and hold the - switch (3). Release the switch when the desired speed is reached, the new speed will be set and maintained.

The set speed can be decreased in steps of 1 mph (2 km/h) by briefly pressing the - switch.

Increasing speed

Press and hold the **SET+** switch (1) to increase cruising speed. Release the switch when the desired speed is reached, the new speed will be set and maintained.

Cruising speed can also be increased using the accelerator. When the desired speed is reached, press the **SET+** switch to set and maintain the new speed, and release the accelerator.

The set speed can be increased in steps of 1 mph (2 km/h) by briefly pressing the **SET+** switch.