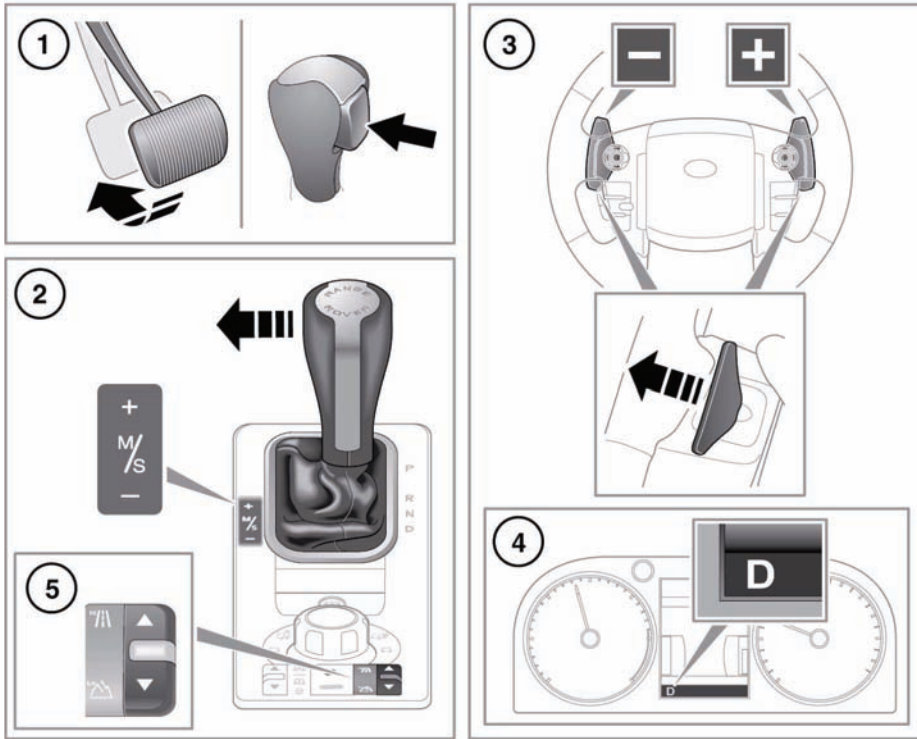


AUTOMATIC TRANSMISSION



136583

1. To select Drive (**D**) when the vehicle is stationary, apply the foot brake and press the gear selector release button.
Note: If pressure is applied to the selector lever before the foot brake is applied, any gear selected may not be available, irrespective of the lever position. In this situation, remove pressure from the selector lever, ensure that the foot brake is applied and select the required gear.
2. To select Sport mode, move the gear selector to the left. **S** will appear in the gear selector display and the LED to the side of the gear selector illuminates.

To use CommandShift™, first select Sport mode, then move the selector lever forward to move up a gear, and back to move down gear.

To return to automatic mode, move the lever back to the **D** position (**D** is displayed as confirmation).

3. Gear shift paddles: Pull the left paddle for downshifts and the right paddle for upshifts.

Note: If the gear selector is in the **D** position, the transmission will revert to automatic operation after a short period of driving at a steady speed.

4. Gear selection display: Displays the currently selected gear.
5. The transfer gearbox switch allows selection of high or low range gears.

⚠ WARNING

Park (P) should be engaged and the parking brake applied when the vehicle is stationary. The vehicle can move unexpectedly with any other gear position selected, which may result in death or serious injury.

⚠ WARNING

Before exiting the vehicle, always ensure that the gear selector is in the Park (P) position, the engine is turned off, the parking brake is applied and the Smart Key is removed from the vehicle.

NOTICE

Do not use auxiliary equipment, such as roller generators that are driven by only one or two wheels of the vehicle, as they will cause failure of the transfer gearbox.

NOTICE

Never select Park (P) while the vehicle is in motion.

NOTICE

Never select Reverse (R) while the vehicle is in forward motion.

NOTICE

Never select a forward gear while the vehicle is in rearward motion.

NOTICE

Do not rev the engine or allow it to run above normal idle speed, while selecting D or R, or while the vehicle is stationary with any gear selected.

NOTICE

Do not allow the vehicle to remain stationary for a sustained period, with a gear selected and the engine running. Always select P or N if the engine is to idle for a prolonged period.

COMMANDSHIFT™

If CommandShift™ is selected in high range, gears 1 or 2 may be used for moving off from stationary. In low range, gears 1, 2 or 3 may be used, which may prove useful in certain off-road driving conditions.

TRANSMISSION COMMANDSHIFT SELECTED

will appear in the message center when the transmission is in CommandShift™ mode.

Note: In order to protect the engine, the transmission will automatically change up to prevent over-revving, or down if the engine is laboring.

NOTICE

Make sure you do not over-rev the engine when using CommandShift™ on vehicles with the Terrain response Dynamic mode (see 102, DYNAMIC). Automatic change up will not occur when CommandShift™ is used in Dynamic mode.

MANUAL GEAR SELECTION

When **D** is selected, manual mode may be temporarily accessed by operating the steering wheel mounted shift paddles.

While in **D**, temporary manual mode will be held while the driver is accelerating, decelerating, cornering or continuing to request shifts via the paddles.

If continual use of manual mode is required, select **S**, to enter permanent manual mode.

HILL DESCENT

With Hill Descent Control (HDC) selected in either automatic, Sport or CommandShift modes, a low gear will be selected and maintained to provide maximum engine braking. Should the gear lever be moved to **D** from the sport/CommandShift position, the selected gear will be retained until the descent is completed. See **103, HDC OPERATION**.

TRANSFER GEARBOX



E136043

1. High range (Hi):

Hi should be used for all normal road driving and also for off-road driving across dry, level terrain.

2. Low range (Lo):

Lo should only be used in situations where low speed maneuvering is necessary.

Also use **Lo** for more extreme off-road conditions. Do not attempt to use **Lo** for normal road driving.

STATIONARY RANGE CHANGING

With the vehicle stationary, select **N**.

Move the transfer gearbox switch towards the range required and release. The switch returns to the default position and range change status will be confirmed after several seconds.

RANGE CHANGE INDICATORS

In **Hi**, the **Hi** range switch indicator is illuminated.



In **Lo**, the green warning lamp in the instrument pack and the **Lo** range switch indicator are illuminated.

While a range change is in progress, the range indicator lamps will flash as follows:

Hi to Lo change:

- The **Lo** range lamp and indicator flash during the change and then illuminate constantly.
- The **Hi** range lamp extinguishes when the change is complete.
- The message **LOW RANGE SELECTED** is briefly displayed in the message center.

Lo to Hi change:

- The **Hi** range indicator and the **Lo** range lamp and indicator flash during the change.
- The **Hi** range indicator illuminates constantly when the change is complete.
- The **Lo** range indicator extinguishes when the change is complete.
- The message **HIGH RANGE SELECTED** is briefly displayed in the message center.

RANGE CHANGING ON THE MOVE

The recommended method of changing range is with the vehicle stationary. For experienced off-road drivers, a range change on-the-move can be accomplished, as detailed below.

AUTOMATIC TRANSMISSION HIGH TO LOW RANGE

1. With the vehicle slowing down, and traveling between 24 mph (40 km/h) and 2 mph (3 km/h), select **N**.
2. Press the rear of the transfer gearbox switch to select **Lo**.
3. Wait for the range change to be completed (this may take several seconds). Once complete, select the desired gear. A gear cannot be selected until the range change is complete.

CHANGING FROM LOW TO HIGH RANGE

With the vehicle traveling no faster than 38 mph (60 km/h), select **N**. Press the front of the transfer gearbox switch to select **Hi**.

Indication of the range change status is the same as for the stationary method.

Now select **D**.