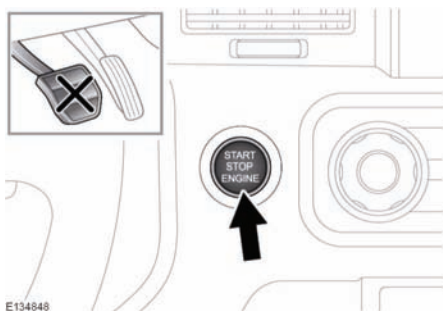


# Starting the engine

## SWITCHING ON THE IGNITION

To turn on the ignition without starting the engine. Ensure the brake pedal is not depressed, and with a valid Smart Key present in the vehicle, press the START/STOP button and hold until the warning lamps illuminate, then release the button.



### NOTICE

If the brake pedal is applied when the start/stop button is pressed, the engine will start.

## STARTING THE ENGINE

### ⚠ WARNING

Never start the engine and leave it running when the vehicle is in an enclosed space. Exhaust gases are poisonous and can cause unconsciousness and death if inhaled.

### NOTICE

The Smart Key may not be detected if it is placed within a metal container or if it is shielded by a device with a back-lit LCD screen, such as a smart phone, laptop (including laptop bag), games console etc. Keep the Smart Key clear of such devices when attempting Keyless entry or Keyless starting.

To start the engine:

- The Smart Key must be inside the vehicle.
- **P** or **N** must be selected.

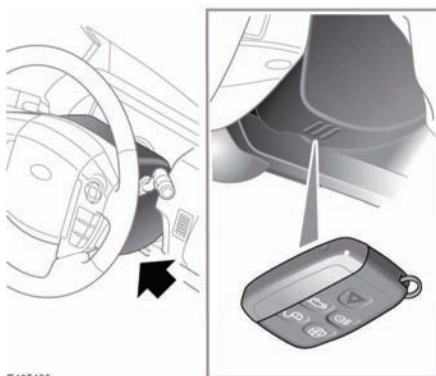
- Apply the brake pedal.
- Press and release the START/STOP button.

Once the engine has started, the brake pedal can be released if it safe to do so.

## IF THE ENGINE FAILS TO START

If the vehicle has been unlocked using the emergency key blade or the Smart Key is not detected by the vehicle, it will be necessary to use the keyless start backup to disarm the alarm and start the engine.

The keyless start backup can only be used when the message **Smart Key Not Found Place As Shown** is displayed in the message center.



Position the Smart Key against the underside of the steering column cover with the buttons facing downwards.

**Note:** There are markings on the cover to help locate the correct position.

When the Smart Key is positioned in this area, it will be recognized by the vehicle and the message **Smart Key recognized** will be displayed in the message center.

Holding the Smart Key in position and the brake pedal depressed, press and release the START/STOP button to start the engine.

Once the engine has been started, you no longer need to hold the Smart Key against the steering column cover.

**Note:** *If the Smart Key is not recognized or the engine still fails to start, consult your Land Rover Retailer/ Authorized Repairer.*

If the engine persistently fails to start, make sure the transmission is in **P** or **N** and press the START/STOP button (without applying the brake pedal) to switch on the ignition. Slowly depress the accelerator pedal fully, then hold it in the fully down position and press the START/STOP button with the brake pedal applied. The engine will then begin to crank. Release the accelerator pedal when the engine starts.

If the engine fails to crank, or fails to start, consult your Land Rover Retailer/Authorized Repairer.

### SWITCHING OFF THE ENGINE

Before stopping the engine, ensure that the vehicle is parked safely with the parking brake applied and **P** selected.

Press and release the engine START/STOP button to stop the engine. The audio, telephone and touch screen systems will revert to stand-by mode.

Pressing the START/STOP button again (without pressing the brake pedal), will activate the systems.

**Switching off the engine while the vehicle is moving:**

#### **NOTICE**

*It is not advisable to switch off the engine while the vehicle is moving. However, if a situation arises where engine switch off is urgent, the following procedure applies:*

1. Press and hold the START/STOP button for 2 seconds, or

2. Press and release the START/STOP button twice within 2 seconds.

With either method, the warning message **Engine Stop Button Pressed** will be displayed.

### ROLLING RE-START

A rolling restart can be initiated by selecting **N** (neutral) and pressing the engine START/STOP button.