

BLUETOOTH® INFORMATION



Bluetooth® is the name for short-range radio frequency (RF) technology that allows electronic devices to communicate wirelessly with each other.

The Land Rover Bluetooth® system supports Bluetooth® Hands-Free Profile (HFP), Advanced Audio Distribution Profile (A2DP) and Audio Video Remote Control Profile (AVRCP).

Note: HFP and A2DP/AVRCP profiles can be connected independently, so a phone can be connected via one, while a media device can be connected via the other, at the same time.

Before making use of the vehicle's Bluetooth phone system, your Bluetooth phone must be paired and connected to the vehicle system. This is done using one of two methods; via your phone to the vehicle or from the touch screen to your phone. If one of these methods is not successful, try the other option.

Each time the ignition is switched on the system will attempt to connect with the last connected phone.

As cell phones have a wide range of audio and echo characteristics, it may take a few seconds for the vehicle system to adapt and deliver optimum audio performance. To achieve this, it may be necessary to reduce the in-vehicle volume and ventilation fan speed slightly.

TELEPHONE COMPATIBILITY

Please refer to the Ownership section of the Land Rover website at www.landrover.com, for a list of compatible phones. In the Owners section, select Bluetooth®.

Note: The Bluetooth® equipped phones listed on Landrover.com, have been tested for compatibility with Land Rover vehicles. Performance will vary, based on the phone's software version, battery condition, coverage and your network provider. Phones are warranted by their manufacturer, not Land Rover.

If the cell phone supports Bluetooth® Hands Free Profile 1.5 (HFP 1.5), additional features will be displayed on the vehicle touch screen, such as battery meter, signal strength and network operator.

TELEPHONE SAFETY

⚠ WARNING

Even when using the Bluetooth hands-free feature, use of your telephone while you are driving is dangerous, as it diverts attention from the traffic situation. If you wish to use your telephone, stop at an appropriate place where you are not endangering or inconveniencing other vehicles.

⚠ WARNING

Switch off your telephone in areas with a high explosion risk. This includes filling stations, garages, fuel storage areas or chemical factories, as well as places where the air contains fuel vapour (such as an open vehicle hood), chemicals or metal dust. The telephone could trigger an explosion, or cause a fire.

⚠ WARNING

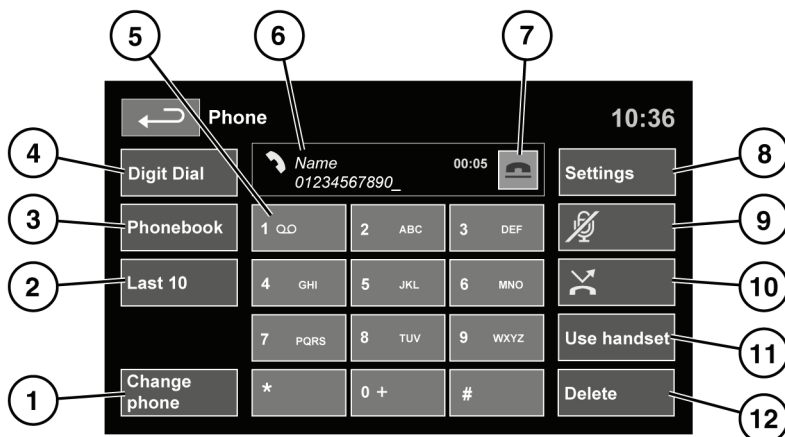
The functioning of cardiac pacemakers or hearing aids may be impaired when the phone is in use. Check with a doctor or manufacturer whether any such devices you or your passengers are using, are sufficiently protected against high-frequency energy.

⚠ WARNING

Always stow your mobile phone securely. In an accident, loose items can cause injury.

The Health Industry Manufacturers' Association recommends that a minimum separation of 6in (15cm) is maintained between a wireless phone antenna and a pacemaker, to avoid potential interference with the pacemaker. These recommendations are consistent with the independent research by, and recommendations of, Wireless Technology Research.

TELEPHONE SYSTEM CONTROLS



SL1857

⚠ WARNING

Do not adjust the touch screen controls, or allow the system to distract the driver, while the vehicle is moving. Driver distraction can lead to accidents, causing serious injury or death.

- 1. Change phone.** Touch to search new or change to another paired phone.
- 2. Last 10.** Select to access the last 10 dialed, received and missed calls.
- 3. Phonebook.** Select to access the downloaded phonebook.
- 4. Digit Dial.** Select to access Digit Dial mode.
- 5.** Touch and hold soft key 1 retrieve your Voice mail.
- 6.** Status display. Displays the name and/or number dialed and call duration.
- 7.** Call Connect/Disconnect icons. Touch to send/accept or end/reject a call.
- 8. Settings.** Select to access; Voice mail, Answer options and Phone options.

- 9. Mute microphone.** Select to initiate Privacy mode. While selected, the caller will not hear you talking.
- 10.** Touch to activate/deactivate Auto reject. When active, any incoming calls will be rejected or diverted to voice mail (depending on cell phone settings).
- 11. Use handset.** Select to switch the call to your cell phone.
- 12. Delete.** Touch and release to delete the last entered digit. Touch and hold to delete the whole entered number.

PAIRING AND CONNECTING FROM YOUR CELL PHONE

Note: The process of pairing and connecting your phone with the vehicle, will vary depending on the type of cell phone used.

1. Switch the ignition system on and ensure that the touch screen is active.
2. From the home menu, select **Phone**.
3. A menu will appear. Select **Search new**.
4. Select **Device to vehicle** option.

Note: The vehicle's Bluetooth® system is discoverable for only 3 minutes.

5. Using the cell phone, search for Bluetooth® devices.

On some phones, this is referred to as new paired device. See your phone's operating instructions for further information.

6. When the vehicle's Bluetooth® system is discovered, follow the on-screen instructions. Select **Yes** when prompted, to confirm the pairing.
Either the phone or the vehicle system will ask for a PIN (Personal Identification Number). When prompted, enter a PIN of your choice and select **OK** to confirm.
7. Enter the same PIN into the other device.
8. Once your phone is paired and connected to the system, a confirmation message will be displayed before switching to the Digit Dial screen.

Note: Some cell phones require the Bluetooth® pairing to be set as 'authorised' or 'trusted' in order to automatically connect. Please refer to your phone's operating instructions for further information.

PAIRING AND CONNECTING FROM THE TOUCH SCREEN

1. Switch on your cell phone's Bluetooth® connection. Make sure that your cell phone is in discoverable mode, sometimes referred to as find me mode (see your phone's operating instructions for more information).
2. Switch the ignition on, ensure that the touch screen is active.
3. From the home menu select **Phone**.
4. A menu will appear. Select **Search new**.
5. Select **Vehicle to device** option.
6. Identify your phone from the displayed list and select the corresponding **Pair and connect** option.

Note: If more than 5 devices are detected, it may be necessary to use the scroll bar to see the entire list.

7. When prompted, enter the PIN code into your phone. See your phone's operating instructions for further information.
8. Once your phone is paired and connected to the system, a confirmation message will be displayed before switching to the Digit Dial screen.

Note: Due to the duration of a Bluetooth® search, it is advised that the timeout to home screen feature is switched off before attempting to search for Bluetooth® devices. This setting can be changed within **Vehicle, Syst settings, Display set, Timeout to home screen**.

CHANGING THE CONNECTED PHONE

Up to 10 mobile phones can be paired with the vehicle in the same way. However, only one can be connected and ready for use as a phone at any one time.

To connect a different paired phone, follow the steps below:

1. From the Home menu, select **Phone**.
2. A menu will appear. Select **Change phone**.
3. Identify and select your phone from the displayed list.
4. Once your phone is connected to the system, a confirmation message will be displayed before switching to the Digit Dial screen.

TOUCH SCREEN ICONS



Connect. Use to send or accept a call and access last 10 dialed numbers.



Disconnect. Use to end or reject a call.



No phone connected.



Phone signal strength indicator.



Phone battery level indicator.



Bluetooth. Indicates that a Bluetooth® device is connected.



Tick. Indicates that a Bluetooth® device is paired.



Voice mail. Press and hold to dial the stored voicemail number.



Scroll bar arrows. Use to scroll up or down lists of detected phones, calls or phonebook entries.

STEERING WHEEL ICONS



Connect. Press and release to send or accept a call or to access the last 10 dialed list. Press and hold to access the phonebook.



Disconnect. Use to end or reject a call.



Voice control talk button.



Press to increase call volume.



Press to decrease call volume.



Press to scroll up or down lists of calls or phonebook entries.



CALL VOLUME

The phone call volume is operated by the audio system's volume control.

If the audio system is in use when a phone call is active, the audio system source is suppressed for the duration of the call.

DIGIT DIAL

Once your phone is connected to the vehicle's system, Digit Dial is the default screen in Phone mode.

Using the on-screen keypad, enter the required number and touch the connect icon to send.

Note: When entering a number, you can change the phone number shown on the touch screen using the **Delete** button. A momentary touch erases a single digit, a long touch erases the complete number.

PHONEBOOK

Contacts stored in the memory of a paired phone can be automatically downloaded to the vehicle's phonebook each time the phone is connected to the system. See **136**, **TELEPHONE COMPATIBILITY**.

Certain cell phones store the phonebook in two different areas, the SIM card and the phone memory. The vehicle system will access only those numbers stored in the phone memory.

To access contacts from the phonebook:

1. From the Phone menu, select **Phonebook**.
2. Using the alpha keys, select the letter you wish to search under. Repeated selections of the same key, scrolls through the letters displayed on the keys.
3. Select **List** to view the phonebook.
4. Identify the required contact from the displayed list and touch to call. If a contact has more than one number stored, select the required number from the list.

Note: It may be necessary to use the scroll bar to see the entire list.

There are also options to view more contact information, by selecting the corresponding **i** key.

If your cell phone supports contact type data, you will be able to see a contact type icon in the vehicle's phonebook directory. These can be seen on the right-hand side of each contact in the directory and will indicate one of the following types:



Default.



Cell phone.



Home.



Work.

LAST 10

Allows view of the last 10 calls made, received or missed.

Note: The vehicle will display the list in the order the calls were recorded. If this information is not available, they will be displayed as they are sent from the cell phone. Some phones may arrange the list in reverse or other order.

DECLARATION OF CONFORMITY

Export controls

This product contains commodities, technology or software exported from the United States in accordance with the Export Administration regulations. Diversion contrary to U.S. or Canadian law is prohibited.

FCC-Industry Canada Notice

This device complies with Part 15 of the FCC Rules and RSS-Gen of IC Rules. Operation is subject to the following two conditions: (1) this device may not cause harmful interference, and (2) this device must accept any interference received, including interference that may cause undesired operation of this device.

This equipment complies with FCC/IC radiation exposure limits set forth for uncontrolled equipment and meets the FCC radio frequency (RF) Exposure Guidelines in Supplement C to OET65 and RSS-102 of the IC radio frequency (RF) Exposure rules. This equipment has very low levels of RF energy that is deemed to comply without maximum permissive exposure evaluation (MPE).

But it is desirable that it should be installed and operated with at least 20cm (8 inches) and more between the radiator and person's body (excluding extremities: hands, wrists, feet and ankles).

USA FCC ID: A269ZUA130

Canada IC: 700BIAM2101

Changes or modifications not expressly approved by the party responsible for compliance could void the user's authority to operate the equipment.

Note: *This equipment has been tested and found to comply with the limits for a Class B digital device, pursuant to Part 15 of the FCC Rules. These limits are designed to provide reasonable protection against harmful interference in a residential installation.*

This equipment generates, uses and can radiate radio frequency energy and, if not installed and used in accordance with the instructions, may cause harmful interference to radio communications. However, there is no guarantee that interference will not occur in a particular installation.

If this equipment does cause harmful interference to radio or television reception, which can be determined by turning the equipment off and on, the user is encouraged to try to correct the interference by one or more of the following measures:

- *Reorient or relocate the receiving antenna.*
- *Increase the separation between the equipment and the receiver.*
- *Connect the equipment into an outlet on a circuit different from that to which the receiver is connected.*
- *Consult the Retailer or an experienced radio/TV technician for help.*