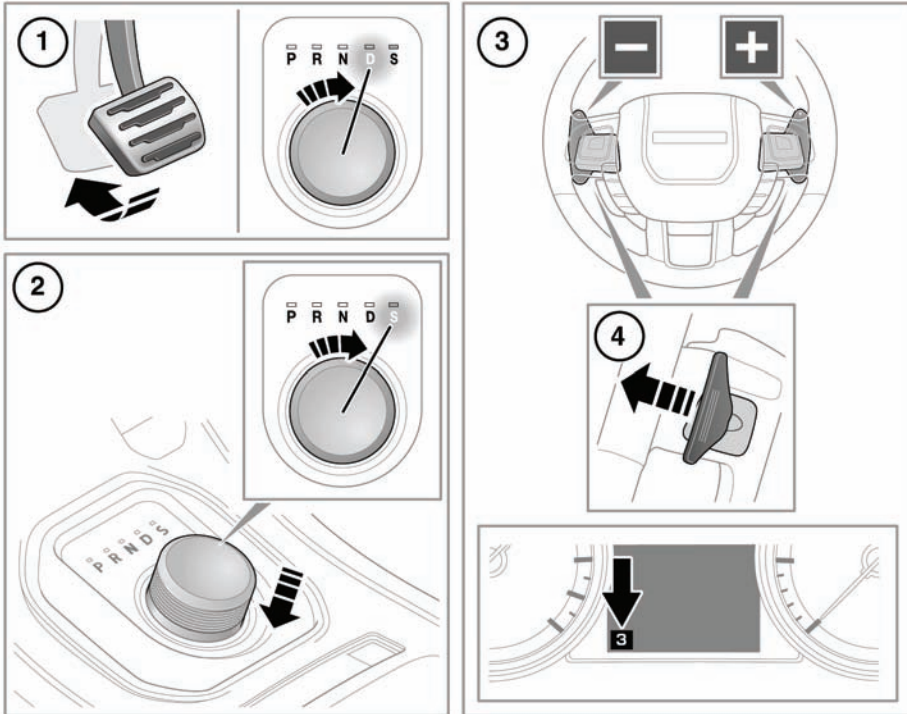


## AUTOMATIC TRANSMISSION

The rotary drive selector rotates in either direction. At engine start up, the selector elevates out of its parked position.



SL1790

1. To select **D** (Drive) or **R** (Reverse) gear, apply the foot brake then rotate the drive selector. The related LED by the selector will illuminate.  
**Note:** If pressure is applied to the selector before the foot brake is applied, the selected gear may not be available. In this situation, remove pressure from the selector, ensure that the foot brake is applied and select the required gear as described.
2. To select **S** (Sport) mode from **D**, press the drive selector down and rotate to **S**. The related LED by the selector will illuminate.
3. CommandShift™ gear selector paddles (left paddle for downshifts, right paddle for upshifts).
4. Pull a paddle briefly to change gear.

To exit CommandShift™ mode and return to Sport mode, pull and hold the upshift (+) paddle for approximately one second. To return to Drive mode, move the selector back to the **D** position.

- The selected gear will be displayed in the message center.

#### **NOTICE**

*Do not rev the engine or allow it to run above normal idle speed, while selecting **D** or **R**, or while the vehicle is stationary with any gear selected.*

#### **NOTICE**

*This vehicle must not be push or tow started.*

## **PARK**

Use when the vehicle is parked. The transmission will be locked.

### **⚠ WARNING**

**Park (P) should be engaged and the parking brake applied when the vehicle is stationary. The vehicle can move unexpectedly with any other gear position selected, which may result in death or serious injury.**

### **⚠ WARNING**

**Before exiting the vehicle, always ensure that the gear selector is in the Park (P) position, the engine is turned off, the parking brake is applied and the Smart Key is removed from the vehicle.**

#### **NOTICE**

*Never select Park (P) while the vehicle is in motion.*

## **REVERSE GEAR**

#### **NOTICE**

*Never select Reverse (R) while the vehicle is in forward motion.*

Before selecting reverse gear, ensure the vehicle is stationary and the brakes are applied.

Rotate to **R**.

## **NEUTRAL**

Disconnects drive to the wheels. Use the parking brake while **N** is selected.

Do not use for vehicle recovery purposes.

## **DRIVE**

#### **NOTICE**

*Never select a forward gear while the vehicle is in rearward motion.*

Gear changing is fully automatic. Shift points are determined by accelerator pedal position and current road speed.

## **SPORT MODE**

The transmission will stay in the lower gears for longer, improving mid-range performance. To deselect Sport mode, move the selector back to **D**.

## **COMMANDSHIFT™**

To return to Sport mode after CommandShift has been selected, move the selector back to **D** then back to Sport mode. **Transmission Commandshift Selected** will appear in the message center when the transmission is in CommandShift mode.

***Note:** In order to protect the engine, the transmission will automatically change up to prevent over-revving, or down if the engine is labouring.*

## KICK-DOWN

Push the accelerator pedal fully down to achieve rapid acceleration in automatic mode. When the pedal is relaxed, normal gear changing will resume.

## DRIVE SELECTOR

**P** should normally be selected before switching off the engine. If any other gear is selected at turn off, the selector will move to **P** before retracting into the center console.

If the engine is switched off with **N** selected, the system will wait for 10 minutes before selecting **P**. This time delay allows the vehicle enough time to be conveyed through a car wash. Do not use for vehicle recovery purposes.

If your vehicles requires recovery by towing, the recovery must be undertaken by qualified personnel. See **213, RECOVERY**.

## DRIVE SELECTOR FAILS TO ELEVATE

If the drive selector is obstructed, remove the obstruction and then start the engine. The selector should elevate as normal.

If the selector still fails to elevate, even if there is no obstruction, a fault in the system is indicated. The selector can still be used in the lowered position. Ensure that **P** is selected before engine switch off. Have the fault rectified at the earliest opportunity.

## TRANSMISSION FAULT

In the event that the transmission develops a fault, a warning message may be displayed in the message center and only limited gears may become available. You should seek qualified assistance immediately.