

## Ignition on and engine starting See page 2, item 6.

The **START/STOP** button is operational only when the Smart Key is inside the vehicle.

### Ignition only on

1. Press once to switch on the ignition.
2. Press again to switch off.

### Engine start

1. The selector lever must be in **P** or **N** position.
2. Depress the foot brake.
3. Now press and release the **START/STOP** button.













To stop the engine, press the button again.

### Operating note

The **START/STOP** button must be pressed to stop the engine. If not, it will continue to run even if the Smart Key is removed from the vehicle.

## Instrument pack warning lamps

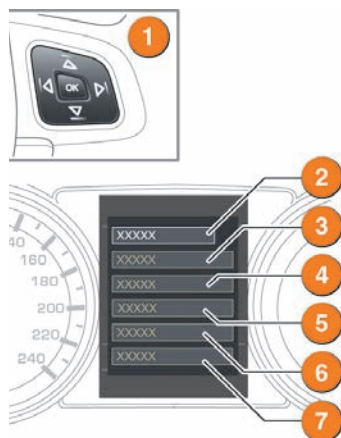
The following lamps may illuminate during normal driving to indicate that a related system or feature is operating. If any other warning lamp illuminates, refer to the Owner's Handbook. DO NOT ignore warning lamps. A RED warning lamp must be investigated immediately.

	Seat belt reminder. Buckle the seat belt.		DSC switched off.		Front fog lamps on
	EPB applied. USA. Release the parking brake.		Rear fog lamps on.		Side lamps on
	EPB applied. Canada. Release the parking		HDC active		High beam assist is on
	A message is available in the Driver information center.		Cruise control active		Trailer attached

## Vehicle information and settings menu See page 2, item 4.

To view and adjust the user adjustable features, operate the steering wheel menu control to display and navigate through the vehicle information and settings menu.

1. Steering wheel menu control.
2. Select to close or return to the main menu.
3. Select to view all active warning messages.
4. Vehicle Set-up menu. Personalize features: Blind spot monitor, Speed warning, High beam assist, Alarm sensors, Reverse dip mirrors, Easy entry/exit, Audible lock warning, Winter wiper park, Drive-away locking and Headlamp delay.
5. Trip computer menu.
6. Display settings menu for language, temperature units and instrument panel appearance.
7. Service menu. Can be accessed only while the engine is running.

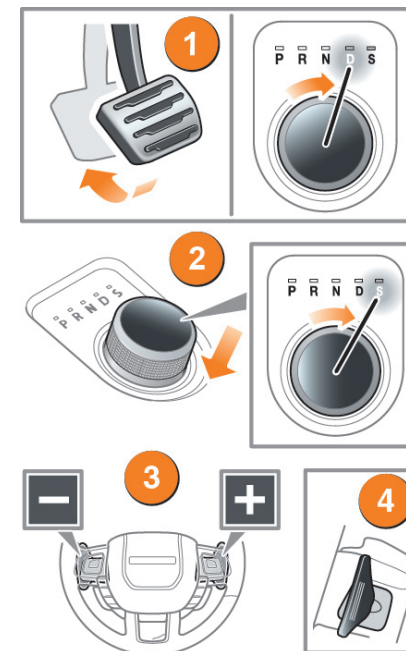


## Automatic transmission

Gear selection will be made with either a rotary selector or by selector paddles. The rotary selector will elevate from the console at ignition on.

1. With the engine running and **P** selected, apply the foot brake. Rotate the selector to **R** or **D**.
2. **Sport mode.** This is an automatic gear change mode, however, change points are modified to make full use of engine power. Press down the selector and rotate to **S**. The indicator alongside the selector will illuminate. To return to automatic gear selection, move the selector back to the **D** position.
3. **CommandShift™** mode. This is an alternative to the fully automatic modes and is effective when rapid acceleration and engine braking are required. With Sport mode selected, use the left gearshift paddle (-) for downshifts and the right paddle (+) for up shifts.
4. With either paddle, pull it towards the steering wheel to make a gear change.

The Driver information center will display the selected gear.



## Cruise control See page 2, item 21.



1. Press when the desired speed is reached or to increase speed in 1mph (2 km/h) increments.
2. Press to resume previous set speed retained in memory. Set speeds are cleared at ignition off.
3. Press to suspend cruise control.
4. Press to decrease set speed in 1mph (2 km/h) increments.

## Electric parking brake *See page 2, item 18.*

### Applying

With the vehicle stationary, pull up the parking brake lever and then release it. A red warning lamp in the instrument pack will illuminate continuously until the brake is released.

- The parking brake will apply automatically if the ignition is turned off and the vehicle speed is below 2mph (3 km/h)

### Releasing

With the ignition on, apply the foot brake and press down on the parking brake lever.

With automatic transmission and either **Drive** or **Reverse** selected, pressing the accelerator will automatically release the parking brake.

Automatic release can be affected in first, second and reverse gears.

## Exterior lights



**1. Outer collar.** First position for sidelamps, second position for headlamps, third position for **AUTO**. With **AUTO** selected, all lamps will switch on when exterior light fades to a pre determined level.

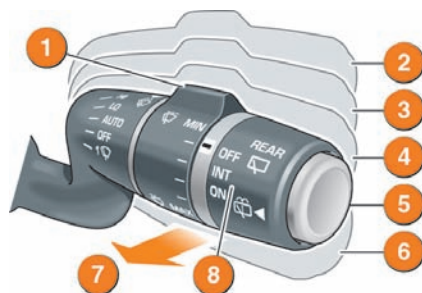
**2. Inner collar.** Turn up for front fog lamps. Turn down for rear fog lamps. Turn again for off.

**Headlamps high beam.** Push forwards for high beam. To flash the headlamps, pull back and release.

**High beam assist.** Active when set in the **Vehicle information and settings menu**, **AUTO** is selected and low beams are in use. High beam will automatically activate when the sensor detects no light or very low light source ahead. Low beam will be automatically selected when appropriate.

## Wipers and washers

- Rotate to adjust intermittent delay.
- High speed wipe.
- Low speed wipe.
- AUTO** (sensor controlled) or intermittent wipe.
- Rear screen wash/wipe.
- Windscreen single wipe.
- Windscreen wash/wipe.



**8.** Rotate to the first position for intermittent rear screen wipe. Move to the second position for continuous wipe.

If freezing conditions are likely, the wipers can be set to a higher position so that they can be lifted from the screen. See page 6, **Vehicle information and settings menu**.

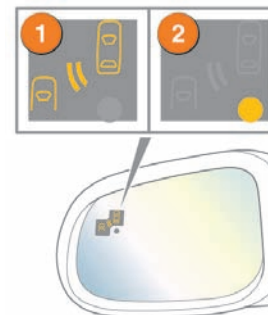
### Care point

Before entering an automatic car wash, turn the wipers off to deactivate the **AUTO** wipe sensor.

## Blind spot monitoring

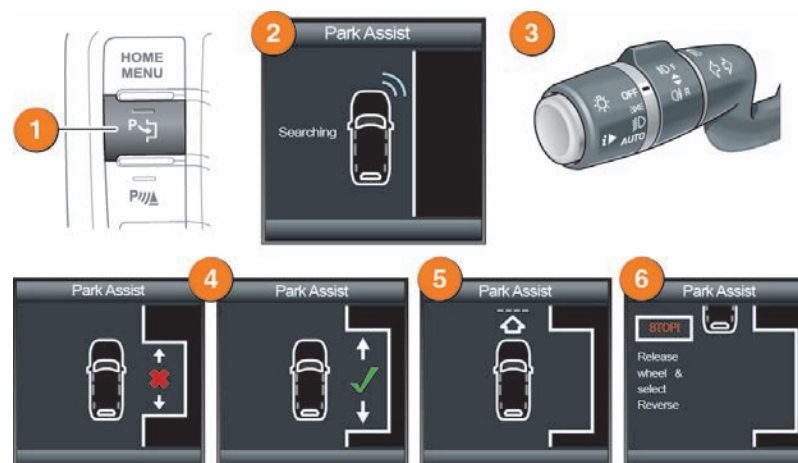
While a forward gear is selected, the BSM system will detect a vehicle approaching from behind, on either side, within its scanned range. Scanned range is approximately 20ft (6 metres) to the rear and 8.2ft (2.5 metres) to the sides.

- An amber icon, depicting an approaching vehicle, will illuminate in the relevant exterior door mirror.
- The amber dot is illuminated at speeds below 10mph (16 km/h). BSM is active only when the amber dot is extinguished.



## Park assist

Park assist helps the driver to parallel park in tight parking slots. When the system sensors identify a suitable space, the vehicle can be steered automatically into place while the driver operates the accelerator and brake. The driver does not steer the vehicle



While searching for a parking space;

- Press to activate while driving forwards at less than 19mph (30km/h).
- Park Assist is displayed in the Driver information centre.
- Park Assist searches for a space on the side of the front passenger. To search for a space on the driver's side, signal a turn in that direction.
- As you drive forward, potential spaces are assessed. A short confirmation tone sounds when a suitable space is found.
- Park Assist will instruct to stop or to drive forward to a starting point and when to select reverse gear.

**6.** Park Assist will then take control of the vehicle's steering system. Release the steering wheel and apply the accelerator carefully to move the vehicle slowly into the space. Use the footbrake to stop when instructed by Park Assist.

Further maneuvering may be required. Follow instructions in the Driver information centre.

When the maneuver is completed, **STOP** will be displayed.