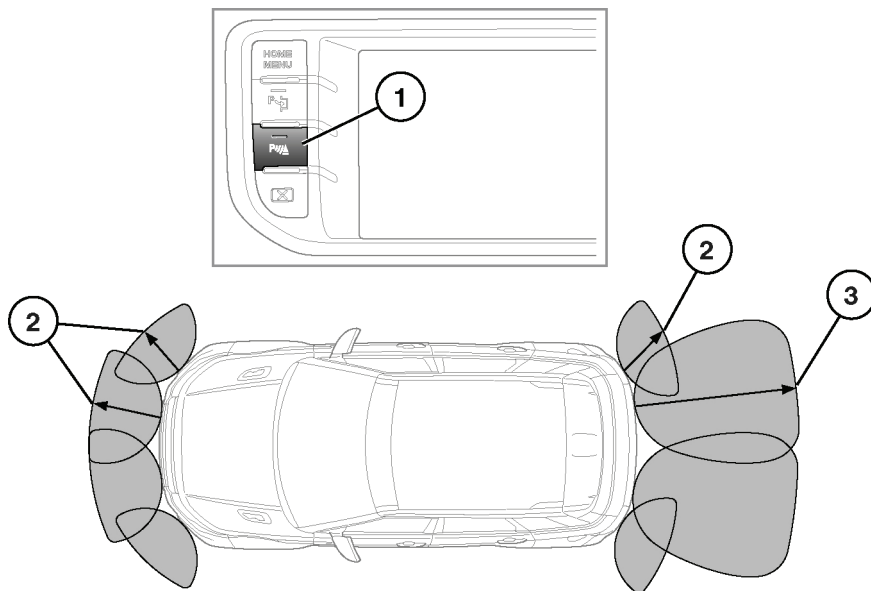


PARKING AIDS



1. Parking aid on/off switch. The switch indicator will illuminate.

When reverse gear is selected, the front and rear parking sensors are activated automatically.

To turn off, press the button. The indicator will extinguish.

2. Approximate sensor range -600mm (24in).
3. Approximate sensor range -1500mm (60in).



It remains the driver's responsibility to detect obstacles and estimate the vehicle's distance from them. Some overhanging objects, barriers, chain link fences, small children, animals, thin obstructions or painted surfaces may not be detected by the system.



Systems using the same frequency band as the front parking sensors, may cause irregular tones to be emitted.

Front sensors will remain active as long as the vehicle's speed does not exceed 16km/h (10mph).

With automatic transmission, selecting **N** from **R** will keep front and rear sensors active.

When objects are detected, the parking aid emits a warning tone which increases in frequency as the vehicle gets closer to the object and then becomes constant when the obstacle is within 300mm (12in).

Note: The front parking aid provides an audible proximity warning when driving forwards and when reversing.

TOWING

The rear sensors are automatically disabled when a trailer with an approved electrical connector is connected.

Note: Trailers fitted with LED lights will not disable the rear parking aids sensors. When reverse gear is selected, the attached trailer will be detected as an obstacle.

CLEANING THE SENSORS



When washing the vehicle do not aim high pressure water jets directly at the sensors. Do not use abrasive materials or hard/sharp objects to clean the sensors. Only use approved vehicle shampoo.

The sensors should be kept clean to maintain accuracy and performance.

SYSTEM FAULT

If a system fault is detected, a long high-pitched tone will sound and the switch indicator will flash. A message will be displayed in the message centre. Contact your Dealer/ Authorised Repairer as soon as possible.

REAR VIEW CAMERA



It remains the driver's responsibility to detect obstacles and estimate the vehicle's distance from them when reversing.

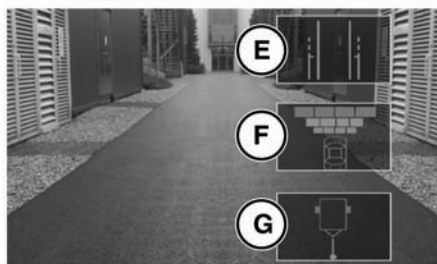
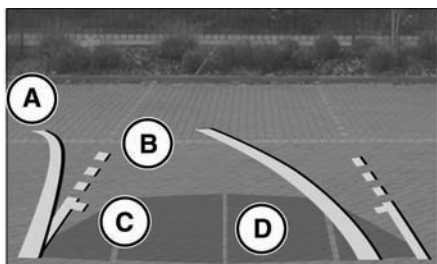
When Reverse (**R**) is selected the camera provides a wide-angle rear view colour image on the touch screen.

The camera display has priority over the parking aid display. To view the parking aid display instead or to cancel camera display at any time, briefly touch the display.

To adjust the camera settings, touch and hold anywhere on the touch screen to access the user options screen.

The display also incorporates graphic overlays, indicating vehicle direction, width and proximity to surrounding objects.

Parking aids



SL1971

- A.** Solid line: The projected path based on current steering wheel position.
- B.** Dotted line: The safe working width of the vehicle (including exterior mirrors).
- C.** Tailgate access guideline: Do not reverse beyond this point if tailgate access is required.
- D.** Parking sensor activation: A coloured area appears, to indicate which rear sensor(s) has been activated.
- E.** User option. Touch to enable/disable A, B & C.
- F.** User option. Touch to enable/disable D.
- G.** User option. Touch to enable/disable Hitch Assist guidance lines.



Some overhanging objects or barriers which could cause damage to the vehicle, may not be detected by the camera.