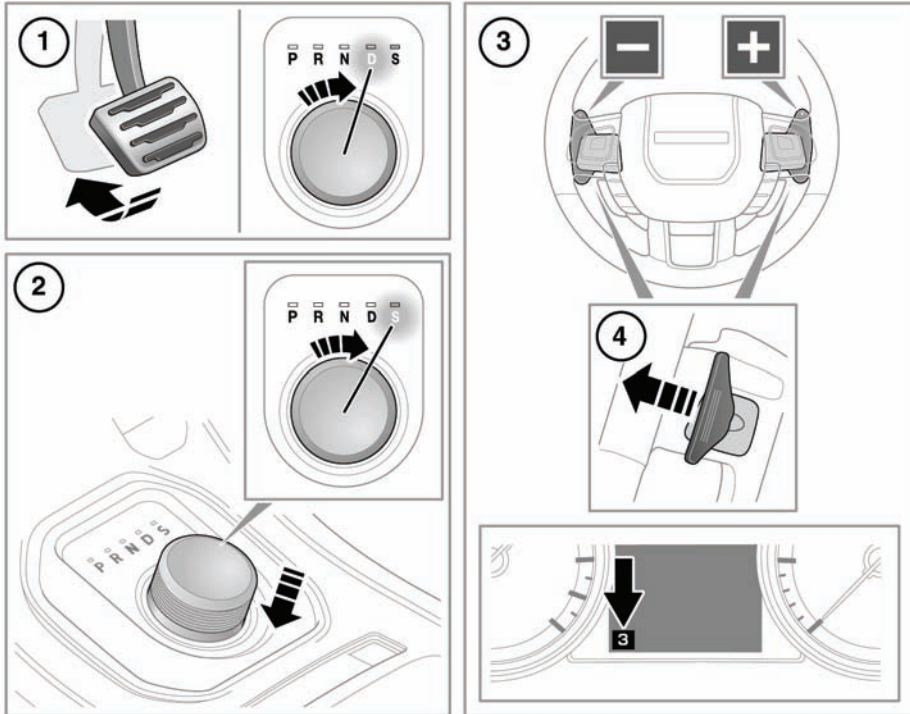


AUTOMATIC TRANSMISSION

The rotary drive selector rotates in either direction. At engine start up, the selector elevates out of its parked position.





SL1790

1. To select **D** (Drive) or **R** (Reverse) gear, apply the foot brake then rotate the drive selector. The related LED by the selector will illuminate.
Note: If pressure is applied to the selector before the foot brake is applied, the selected gear may not be available. In this situation, remove pressure from the selector, ensure that the foot brake is applied and select the required gear as described.
2. To select **S** (Sport) mode from **D**, press the drive selector down and rotate to **S**. The related LED by the selector will illuminate.
3. CommandShift™ gear selector paddles (left paddle for downshifts, right paddle for upshifts).
4. Pull a paddle briefly to change gear.

To exit CommandShift™ mode and return to Sport mode, pull and hold the upshift (+) paddle for approximately one second. To return to Drive mode, move the selector back to the **D** position.


- The selected gear will be displayed in the message centre.

 Do not allow the vehicle to remain stationary for a sustained period, with a gear selected and the engine running.


 This vehicle must not be push or tow started.

PARK


Use when the vehicle is parked. The transmission will be locked.

 **Park (P) or Neutral (N) should be engaged and the parking brake applied when the vehicle is stationary.**

 **Always select P and switch off the ignition before leaving the vehicle.**

 Never select Park (**P**) when the vehicle is in motion.

REVERSE GEAR

 Never select Reverse (**R**) when the vehicle is in forward motion.

Before selecting reverse gear, ensure the vehicle is stationary and the brakes are applied.


Rotate to **R**.

NEUTRAL

Disconnects drive to the wheels. Use the parking brake while **N** is selected.

Do not use for vehicle recovery purposes.

DRIVE

 Never select a forward gear when the vehicle is in rearward motion.

Gear changing is fully automatic. Shift points are determined by accelerator pedal position and current road speed.

SPORT MODE

The transmission will stay in the lower gears for longer, improving mid-range performance. To deselect Sport mode, move the selector back to **D**.

COMMANDSHIFT™

To return to Sport mode after CommandShift has been selected, move the selector back to **D** then back to Sport mode. **Transmission Commandshift Selected** will appear in the message centre when the transmission is in CommandShift mode.

***Note:** In order to protect the engine, the transmission will automatically change up to prevent over-revving, or down if the engine is labouring.*

KICK-DOWN

Push the accelerator pedal fully down to achieve rapid acceleration in automatic mode. When the pedal is relaxed, normal gear changing will resume.

DRIVE SELECTOR

P should normally be selected before switching off the engine. If any other gear is selected at turn off, the selector will move to **P** before retracting into the centre console.

If the engine is switched off with **N** selected, the system will wait for 10 minutes before selecting **P**. This time delay allows the vehicle enough time to be conveyed through a car wash. Do not use for vehicle recovery purposes.

If your vehicles requires recovery by towing, the recovery must be undertaken by qualified personnel. See **216, RECOVERY**.

DRIVE SELECTOR FAILS TO ELEVATE

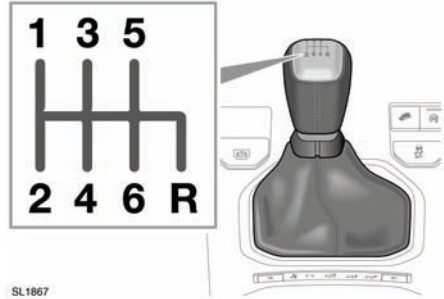
If the drive selector is obstructed, remove the obstruction and then start the engine. The selector should elevate as normal.

If the selector still fails to elevate, even if there is no obstruction, a fault in the system is indicated. The selector can still be used in the lowered position. Ensure that **P** is selected before engine switch off. Have the fault rectified at the earliest opportunity.

TRANSMISSION FAULT

In the event that the transmission develops a fault, a warning message may be displayed in the message centre and only limited gears may become available. You should seek qualified assistance immediately.

MANUAL TRANSMISSION



Selection of reverse gear is prevented when the vehicle is travelling in excess of 24km/h (15mph). Never attempt to engage reverse gear while the vehicle is in forward motion. This may result in serious transmission damage and costly repairs.

GEAR SHIFT INDICATOR



The gear shift indicator illuminates briefly at the recommended gear change point (upshift).

The shift indicator will not illuminate while Cruise control is active and is not being overridden by pressing the throttle pedal.

Note: This warning indicator is only a guide. It remains the responsibility of the driver to operate the vehicle in an appropriate manner for the prevailing conditions.