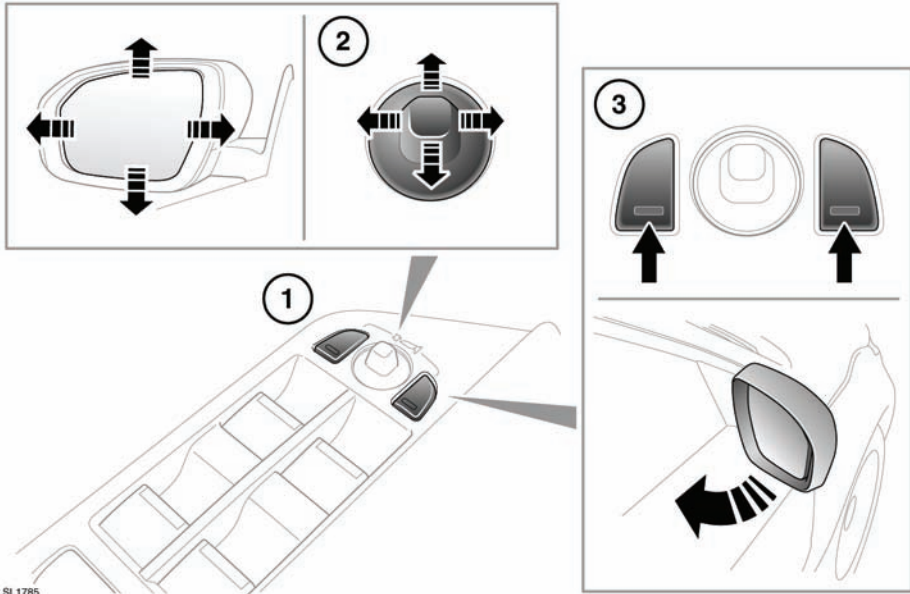


## EXTERIOR MIRRORS



SL1785

1. Mirror selector switches. Press to select the left or right mirror.
2. Mirror adjustment switch. Move up/down/left or right to adjust the mirror glass.
3. Press both selector switches together to fold/unfold the mirrors (power fold option).

The mirrors can be adjusted and folded when the ignition is on and for up to 5 minutes after the ignition is switched off, provided the driver's door is not opened.

**Note:** Powerfold will operate only if vehicle speed is below 113km/h (70 mph).

**Note:** The rear view door mirror heaters operate automatically according to the external temperature and windscreen wiper operation.

**Note:** An amount of knock protection is designed into the door mirrors. If a mirror is accidentally knocked inwards or manually folded inwards, the mirror head will be disengaged from the folding mechanism. To re-engage the mechanism, fold then unfold the mirror using the switch.

**Note:** A thermal cut-out which will temporarily disable the powerfold feature if the switches are operated repeatedly.

## AUTOMATIC POWERFOLD MIRRORS

Powerfold mirrors can be configured to automatically fold when the vehicle is locked and unfold when unlocked.



This function can be enabled/disabled by your Dealer/Authorised Repairer.

**Note:** If the powerfold mirrors were folded using the switches, they will not unfold when the vehicle is unlocked.

## MIRROR DIP WHEN REVERSING

If the vehicle is equipped with memory seats, when reverse gear is selected the door mirrors can be set to automatically adjust, providing an improved viewing angle of the curb side for reversing. The **Reverse-dip mirror** feature must be switched on. See **56, VEHICLE INFORMATION AND SETTINGS MENU**.

The exact dipped position can be adjusted while the mirrors are dipped;

1. With the ignition on, select reverse gear.
2. With the mirror adjust controls, adjust to the desired dip position.
3. Select neutral (N) gear. This will store your setting for future use.

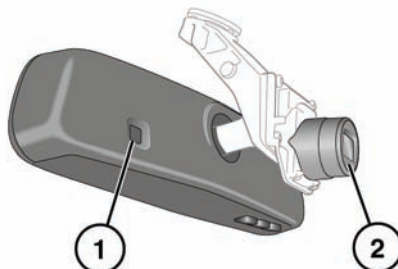
The next time reverse is selected, the newly adjusted position will be selected.

When the gear selector is moved out of reverse, the mirrors will return to their previous position.

**Note:** If vehicle speed exceeds 7km/h (4mph) in reverse, the mirrors will return to their normal driving position for enhanced visibility.

## INTERIOR MIRROR

### Auto dimming mirror



1. Ambient light sensor.

2. High beam assist sensor.

Interior mirror dimming will adjust automatically according to the amount of ambient light when the ignition is on. If reverse gear is selected, the automatic dimming feature is turned off to allow maximum visibility for reversing.

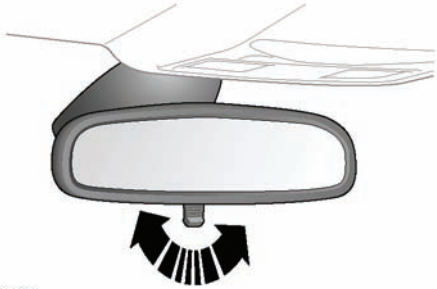
**Note:** Ensure that the forward facing sensors (1) and (2) on the back of the rear view mirror are not blocked or obstructed.

**Note:** If the mirror becomes detached from the windscreen it should be reattached by a Land Rover Dealer/Authorised Repairer.

**Note:** If the rear screen is obscured, or the light falling on the mirror is reduced by an obstruction, the automatic dimming feature may not operate correctly.

# Mirrors

## Manual dimming mirror



SJ1987

To dim the light levels reflected by the mirror, push the lever forward. To return it to normal light levels, pull the lever back.