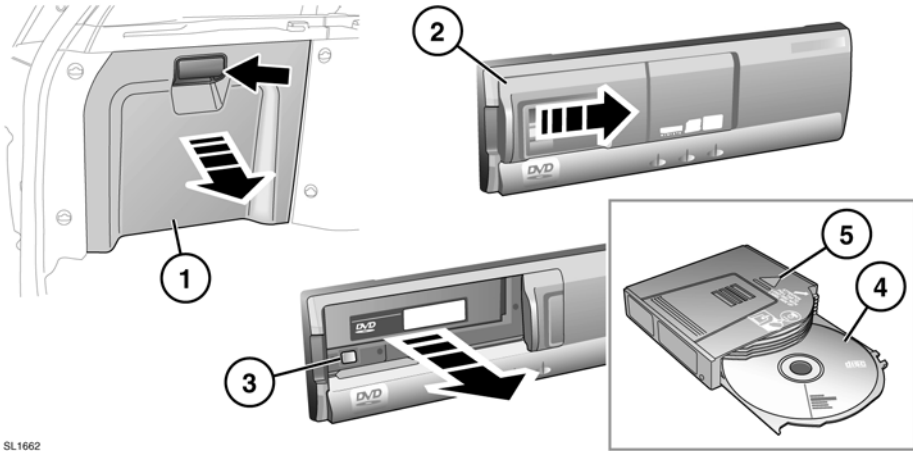


ACCESSING AND LOADING THE DVD PLAYER



SL1662

The DVD player is located in the luggage area on the left hand side.

1. Open the access hatch.
2. Slide the player door open.
3. Press the eject button to release the magazine.
4. Load a disc into the magazine with the label side facing upwards.
5. Insert the magazine into the DVD player in the direction of the marked arrow.
6. Close the sliding door and the access hatch.

The player will play 12 cm DVDs, Video CDs and audio CDs.

Note: Video CDs will have fewer options available from their menus.

The DVD player is not compatible with High Definition DVD discs, DVD-ROMs, DVD-RAMs, Photo CDs, MP3s or DVD plus discs.

- ⚠ CAUTION: Do not leave the DVD player door in the open position. Ingress of dirt or moisture can reduce playback quality and may result in damage to the player.
- ⚠ CAUTION: Do not place any device/object that emits a magnetic field near to the player.
- ⚠ CAUTION: Do not insert any object other than the recommended discs into the player.
- ⚠ CAUTION: Ensure that discs are clean/dust-free, before inserting into the player.



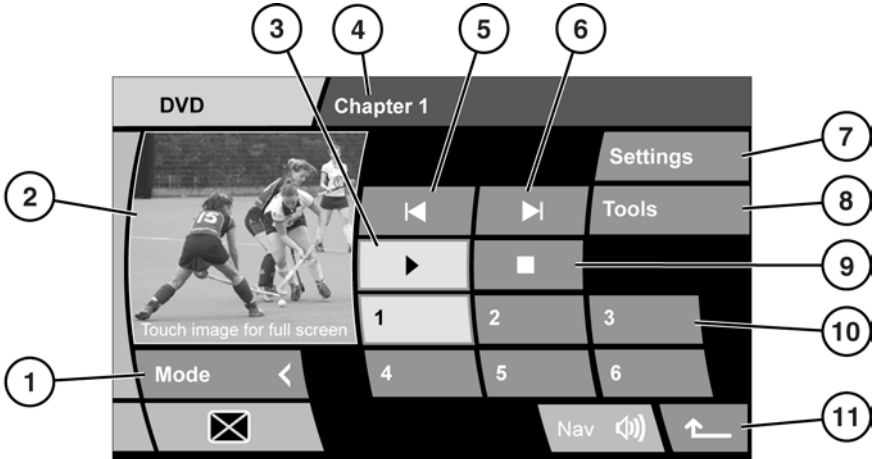
SL1519

Note: *This product incorporates copyright protection technology that is protected by method claims of certain U.S. patents and other intellectual property rights owned by Macrovision Corporation and other rights owners. Use of this copyright protection technology must be authorized by Macrovision Corporation and is intended for home and other limited viewing uses only unless otherwise authorized by Macrovision Corporation. Reverse engineering or disassembly is prohibited.*

VIEWING FROM THE FRONT SCREEN

DVD content can be viewed on the front screen while the vehicle is stationary. The park brake must be engaged and Park selected. As soon as another gear selection is made, the driver view will revert to a non DVD screen. A speed inhibit feature will disable preview display at a factory set speed.

DVD CONTROLS



SL1661



WARNING: Do not adjust the touch screen controls, or allow the system to distract the driver, while the vehicle is moving. Driver distraction can lead to accidents, causing serious injury or death.

1. **Mode.** Touch to return to source selection menu.
2. Preview screen. Touch to select full screen mode. Screen appearance choices will be displayed for five seconds. Touch to make changes.
3. Touch to start play or resume play. Touch and hold for slow motion play. Touch again for normal speed play.
4. Program information.
5. Backwards/Previous softkey. Touch and hold for fast play.
6. Forwards/Next softkey. Touch and hold for fast play

7. **Settings.** Touch to access DVD format settings.
8. **Tools.** Touch to access DVD program control screen.
9. Touch once to pause current program. Touch twice to stop play and return to the start of the program.
10. Numeric soft keys for DVDs loaded into the changer unit.
11. Touch to return to previous screen.

The **AUDIO VIDEO** hard key can be used to access the main DVD control menu.

DVD MENU SELECTION

There are 2 methods for selecting DVD mode.

Access via the **AUDIO VIDEO** hard key:

1. While in another viewing mode (e.g. Navigation), press the **AUDI VIDEO** hard key.
2. Select the **Audio Video** soft key to access DVD. If a further selection is not made within five seconds, the left side selection soft keys will be replaced with a **Mode** soft key and a preview area.

Access via the Home menu:

1. Press the **HOME MENU** hard button.
2. Touch the **Audio Video** soft key to access the audio/video menu.
3. As in the first access method, select DVD with the **DVD** soft key.

PLAYING A DVD

To select and play a disc:

1. Touch the numeric soft key that the required disc is loaded to. The disc menu will display in the preview area.
2. Touch the play soft key.

DVD SPECIAL FEATURES

Select Tools.

Menu:

DVD play must be stopped before this menu will display. A long touch of the **Menu** soft key will display the DVD changer menu.

Use the direction soft keys plus **Return** and **Enter** to modify the DVD changer menu.

GOTO:

When a DVD has title, chapter and time information, it can be accessed by touching the **GOTO** soft key. Repeated presses of the **GOTO** soft key will scroll through the available information pages.

Use **GOTO** to access a point within the DVD (e.g. select Chapter to display a chapter selection pop-up). Enter a chapter number, then select **ENTER**.

Touch and hold **GOTO** to display DVD status information.

A second long touch will display the previous screen.

Subtitle:

Select to toggle through the available subtitle options. Subtitles will be displayed along the bottom of the screen.

To turn subtitles off, touch and hold the **Subtitle** soft key.

Angle:

Some DVD programs offer alternative viewing angles in selected scenes. Touch the soft key to toggle through the available options.

Audio:

Some DVD programs have alternative or extra sound features, such as a commentary. Touch the soft key to toggle through the available options.

ALTERNATIVE AUDIO SOURCE

While watching a DVD program on a single view display, an alternative audio source can be selected if required (e.g. a radio news station).

Press the **OK** or **MODE** rotary control to display alternative audio sources then rotate to select a source. After 2 seconds, the selected audio source will play and the video source will remain unaffected.

DVD FORMATS AND SCREEN SETTINGS

NTSC (National Television System Committee) is the format used in North America.

PAL (Phase Alternating Line) format is used in the United Kingdom and other countries around the world.

To change the format, select **Settings**. Select the alternative format. After 5 seconds, the screen will return to normal view.

SCREEN APPEARANCE

When you move from the preview screen to full screen, picture format soft keys are displayed. Use to select the viewing area or zoom of the viewed image. If there is no input for five seconds the soft keys will close.