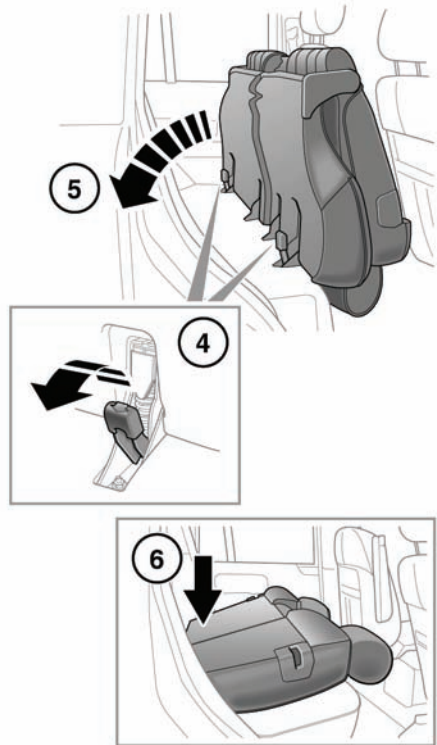
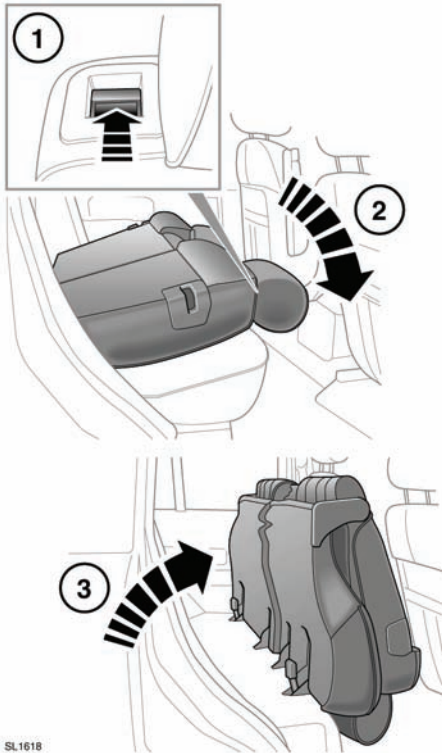


FOLDING AND ERECTING THE REAR SEATS



SL1618

⚠WARNING

Never allow passengers to ride in the cargo area. In a collision, people riding in these areas are more likely to be seriously injured or killed. Do not allow anyone to ride in any area of your vehicle that is not equipped for passengers. Be sure everyone in your vehicle is in a seat and using their seat belt properly.

⚠WARNING

In a collision or sudden stop, unsecured objects could be thrown inside the vehicle striking and injuring occupants. Always properly store and secure cargo and other objects in the vehicle.

The split fold rear seat can be folded completely to accommodate large loads, or partially to accommodate large loads and still retain seating for passengers.

1. **To fold part or all of the seat:** Lift the lever on the top of the backrest.

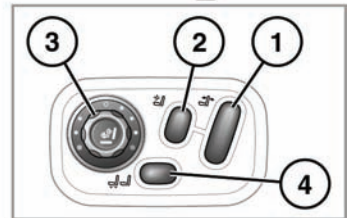
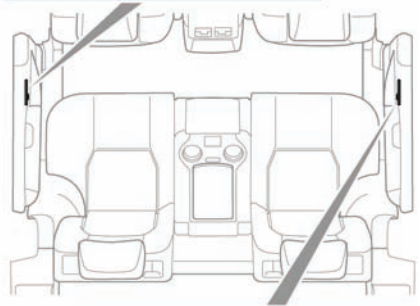
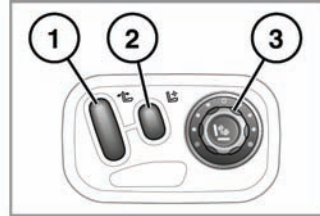
2. Fold the backrest on to the seat base.
3. lift the whole assembly forward until it locks in the upright position.
4. **To erect:** Pull the release lever rearwards.
5. Push the seat assembly back on to the floor.
6. Press down on the seat where arrowed to fully engage the floor catches. The backrest can now be raised.

⚠ WARNING

Always check that the locking mechanism is fully engaged after raising the backrest. If the backrests are not fully locked in place, red markers will be visible around the backrest levers.

RECLINING REAR SEATS

Note: This feature will not operate if the rear window isolation switch has been activated.



SL1197

1. Seat angle adjustment.
2. Lumbar support adjustment.
3. Climate seat control (only with engine running).
 - Rotate clockwise from the **0** position to increase temperature.

The seat heaters are thermostatically controlled and once selected will maintain a predetermined temperature.

Rear seats

- Repeatedly press the center of the control to select either the seat back or seat back and seat cushion. The relevant indicator(s) will illuminate.
 - Rotate to the 0 position to turn off.
4. Front passenger seat forward or backward adjustment.

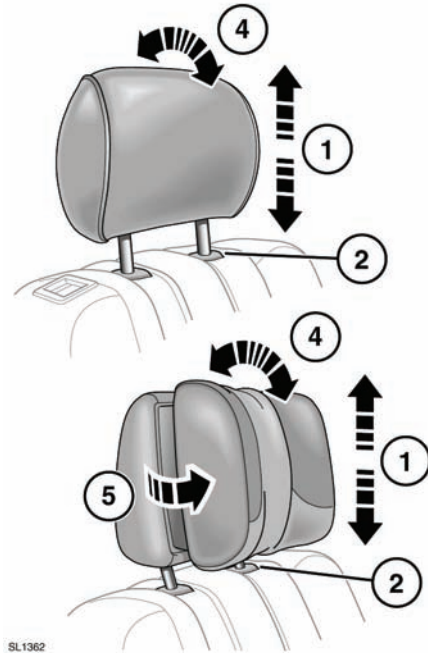
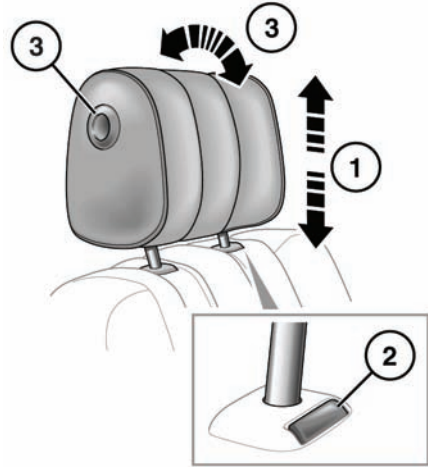
REAR SEAT HEAD RESTRAINTS

⚠WARNING

Adjust the head restraint so that the top of the head restraint is above the center line of the head. An incorrectly adjusted head restraint increases the risk of death or serious injury in the event of a collision or sudden stop.

⚠WARNING

Do not drive or carry passengers with the head restraint removed from an occupied seat. The absence of a correctly adjusted head restraint increases the risk of neck injury in the event of a collision or sudden stop.



SL1362

1. To raise, pull the restraint upwards.

2. To lower, depress the locking button and push down on the restraint.
3. To adjust the angle, press the locking button and move the restraint to the desired position.
4. Rotate the restraint to adjust the angle.
5. Pull the wing heads forward in to the first or second positions.

Head restraints may be removed, if required (e.g. to fit larger child seats). Raise the head restraint to its uppermost position and press the locking collar. Lift the restraint out of the seatback.

WARNING

Always store a removed restraint securely.

To refit a head restraint, ensure it is facing the correct direction, insert the stems of the head restraint into the sockets and push it downwards until at least the first click.