

SAFETY PRECAUTIONS

DANGER

Do not smoke, use a naked flame, or cause sparks while refuelling. The resulting fire and explosion may cause serious injury or death.

WARNING

Avoid exposing the fuel gasses to any potential sources of ignition as the resulting fire and explosion may cause serious injuries and/or death.

WARNING

Switch off the engine when refuelling, as it is both a source of extreme temperatures, and electrical sparks. Failure to do so may cause a fire or explosion.

WARNING

Switch off any personal electronic devices such as mobile phones or music players. They have the potential to trigger an explosion or a fire.

WARNING

Do not overfill the fuel tank. Overfilling may cause spillage when the vehicle is driven. Spillage may also occur if the fuel expands in high ambient temperatures.

WARNING

Only use containers specifically designed for carrying fuel and always remove them from the vehicle to fill them. Failure to do so may result in spillage and cause a fire.

NOTICE

Do not use leaded fuels, lead substitutes, or fuel additives.

NOTICE

Fuel system cleaning agents should not be used, unless approved by Land Rover. Unapproved products may be harmful to fuel system components on your vehicle.

NOTICE

Only use high quality fuel. Using lower quality fuels can damage the engine, fuel and emission control systems.

Gas station pumps are equipped with automatic cut-off sensing to avoid fuel spillage. Fill the tank until the filler nozzle automatically cuts-off the supply. Do not attempt to fill the tank beyond this point.

OCTANE RATING

Premium unleaded gasoline with a Cost of Living Council (CLC) or Anti Knock Index (AKI) octane rating of 91 or higher should be used.

NOTICE

Even a very small amount of leaded fuel will damage your vehicle's emission control system and could invalidate the emissions warranty. In addition, leaded fuel will damage the oxygen sensors in the fuel injection system and also seriously damage the catalytic converter.

Note: Federal law requires that gasoline octane ratings be posted on the pumps.

Note: Mid or regular grade gasoline with a CLC or AKI rating of not lower than 87 may also be used, but performance and fuel economy will be reduced.

Using unleaded gasoline with a lower than recommended octane rating, can cause a persistent, heavy engine knock (a metallic rapping noise). If severe, this can lead to engine damage.

Note: Occasional, light, engine knock experienced while accelerating or climbing hills is acceptable.

If heavy knock is detected, even when using gasoline with the recommended octane rating, consult your Retailer to have the problem corrected. Failure to do so is misuse of the vehicle, for which Land Rover is not responsible.

ETHANOL

NOTICE

This vehicle is not suitable for use with fuels containing more than 10% ethanol.

NOTICE

Do not use E85 fuels (85% Ethanol content). Equipment necessary for the use of fuels containing more than 10% Ethanol is not fitted to this vehicle. If E85 fuels are used, serious engine and fuel system damage will occur.

Fuels containing up to 10% ethanol (grain alcohol) may be used. Ensure that the fuel has octane ratings no lower than those recommended for unleaded fuel. Most drivers will not notice any operating difference with fuel containing Ethanol. If a difference is detected, the use of conventional unleaded fuel should be resumed.

METHANOL

NOTICE

Wherever possible avoid using fuel containing methanol.

Some fuels contain methanol (Methyl or wood alcohol). If you use fuels containing methanol the fuels must also contain co-solvents and corrosion inhibitors for methanol. Also, do not use fuels which contain more than 3% methanol even if they contain co-solvents and corrosion inhibitors. Fuel system damage or

vehicle performance problems resulting from the use of such fuels is not the responsibility of Land Rover and may not be covered under the warranty.

METHYL TERTIARY BUTYL ETHER (MTBE)

Unleaded fuel containing an oxygenate known as MTBE can be used provided that the ratio of MTBE to conventional gasoline does not exceed 15%. MTBE is an Ether based compound derived from Petroleum, which has been specified by several refiners as the substance to enhance the Octane rating of fuel.

REFORMULATED GASOLINE

These fuels are specially formulated to further reduce vehicle emissions. Land Rover fully supports all efforts to protect and maintain ambient air quality and encourages the use of reformulated gasoline where available.

RUNNING OUT OF GAS

NOTICE

Avoid running out of fuel. Doing so can cause damage to the vehicle's engine, fuel and emission control systems.

If the vehicle does run out of fuel, a minimum of 1.32 U.S. gallons (5 litres) will be required to restart the engine. The vehicle will need to be driven 1-3 miles (1.6-5 km) in order to reset the engine management and monitoring systems.

Note: *If the vehicle does run out of gas, seeking qualified assistance is advisable.*

GAS TANK CAPACITY

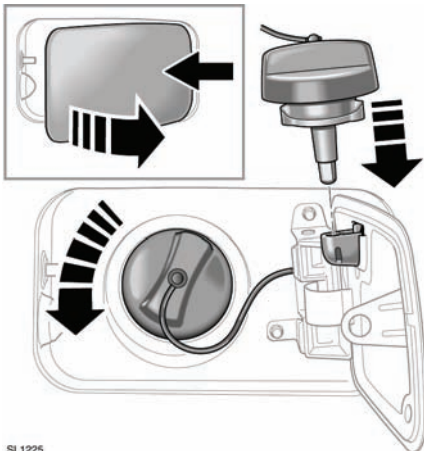
Avoid the risk of running out of gas and never intentionally drive the vehicle when the gauge indicates that the tank is empty. When refuelling your vehicle after the gauge reads empty, you may not be able to add the gas quantity shown below, as there will be a small reserve remaining in the tank.

Total tank capacity (usable)	26.7 gallons (101 litres)
Fuel specification	Unleaded 91 Octane

GAS CAP LABELS

⚠WARNING

Take note of all warnings and instructions given on the label affixed to the inside of the filler flap. Failure to do so may result in injury or death.



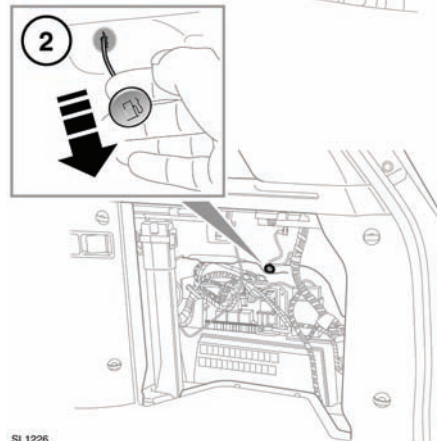
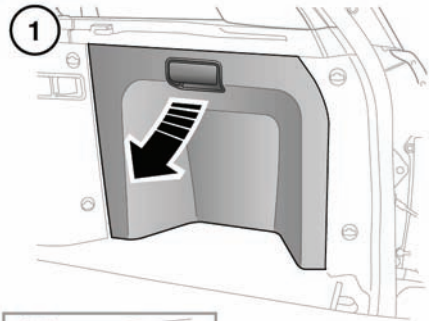
SL1225

The gas cap flap is located on the right-hand side of the vehicle, at the rear.

1. Ensure that the vehicle is fully unlocked, and press the right side of the flap to open.
2. Open the flap fully.
3. Twist the cap counter clockwise to release.
4. Use the retaining clip to keep the gas cap out of the way while fuelling.

When replacing the cap, tighten it clockwise until the ratchet clicks.

GAS CAP FLAP EMERGENCY RELEASE



SL1226

If there is no vehicle electrical power, the gas flap can be opened manually

1. Open the rear right side access hatch.
2. Pull the green release handle to open the flap.

GAS FILLING

⚠ WARNING

When refuelling ensure that all windows, doors, and sunroof are fully closed, particularly if young children or animals are in the vehicle.

⚠ WARNING

Do not attempt to fill the tank to its maximum capacity. If the vehicle is to be parked on a slope, in direct sunlight, or high ambient temperature, expansion of the fuel could cause spillage.

⚠ WARNING

Do not operate the auxiliary heater when refuelling the vehicle. Doing so may cause fuel vapours to combust causing a fire/explosion.

NOTICE

Check the fuel pump information carefully, to ensure that you are putting the correct fuel into the vehicle.

NOTICE

If the vehicle is filled with incorrect fuel it is essential that you seek qualified assistance before you start the engine.

Gas station pumps are equipped with automatic cut-off sensing to avoid fuel spillage. Fill the tank until the filler nozzle automatically cuts-off the supply. Do not attempt to fill the tank beyond this point.