

# Starting the engine

## STEERING COLUMN LOCK

### NOTICE

During vehicle recovery, the Smart Key must remain inside the vehicle, so that the steering column remains unlocked.

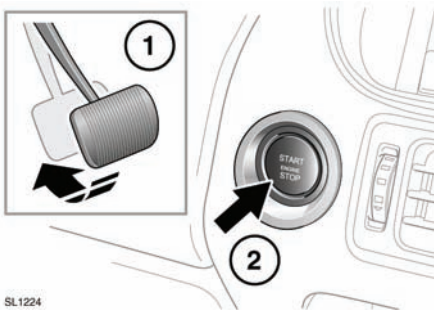
Your vehicle is fitted with an electronic steering column lock. The column unlocks when a Smart Key is detected inside the vehicle.

If any malfunction of the steering column lock occurs, **STEERING COLUMN LOCKED** will be displayed in the message center. If this occurs:

1. Lock and then unlock the vehicle using the Smart Key.
2. Try again to unlock the steering column lock, by turning the steering wheel gently to the left and right.
3. If the problem persists, seek qualified assistance immediately.

## SWITCHING ON THE IGNITION

To turn on the ignition without starting the engine. Ensuring the brake pedal is not depressed and with a valid Smart Key present in the vehicle, press the START/STOP button and hold until the warning indicators illuminate, then release the button.



SL1224

### NOTICE

If the brake pedal is applied when the start/stop button is pressed, the engine will start.

## BATTERY CHARGING - RED



Illuminates as a bulb check when the ignition is turned on and extinguishes once the engine is running. If it remains on, or illuminates while driving, a fault with the battery charging system is indicated. Seek qualified assistance urgently.

## KEYLESS STARTING

### ⚠ DANGER

**Never start the engine and leave it running when the vehicle is in an enclosed space. Exhaust gases are poisonous and can cause unconsciousness and death if inhaled.**

To start the engine:

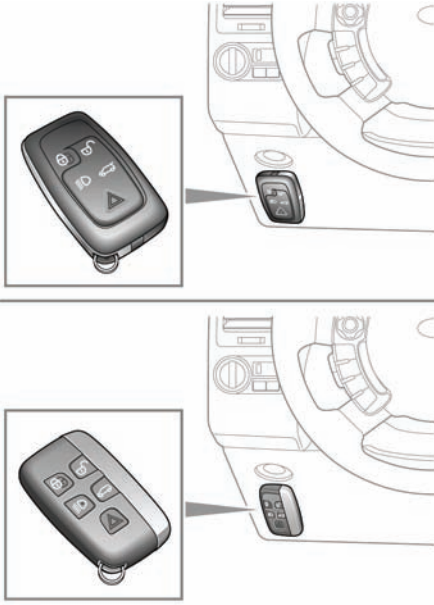
- The Smart Key must be inside the vehicle.
- **P** or **N** must be selected.
- Apply the brake pedal.
- Press and release the START/STOP button.

Once the engine has started, the brake pedal can be released if it safe to do so.

## KEYLESS START BACKUP

If the vehicle has been unlocked using the emergency key blade or the Smart Key is not detected by the vehicle, it will be necessary to use the keyless start backup to disarm the alarm and start the engine.

The keyless start backup can only be used when the message **Smart Key Not Found - Refer to handbook** is displayed in the message center.



SL1901

Position the Smart Key against the underside of the fascia with the buttons facing downwards.

When the Smart Key is positioned in this area, it will be recognized by the vehicle and the message **Smart Key Recognized** will be displayed in the message center.

Holding the Smart Key in position and with the brake pedal depressed, press and release the START/STOP button to start the engine.

When the engine starts, you no longer need to hold the Smart Key beneath the fascia.

**Note:** If the Smart Key is not recognized or the engine still fails to start, consult your Retailer.

## IF THE ENGINE FAILS TO START

**Note:** If the engine fails to crank when the START/STOP button is pressed and there has been a recent collision, the fuel system inertia switch may have been tripped. Seek qualified assistance.

If the engine persistently fails to start, make sure the transmission is in **P** or **N** and press the START/STOP button (without applying the brake pedal) to switch on the ignition. Slowly depress the accelerator pedal fully, then hold it in the fully down position and press the START/STOP button with the brake pedal applied. The engine will then begin to crank. Release the accelerator pedal when the engine starts.

If the engine fails to crank, or fails to start, consult your Retailer.

### Power assisted steering:

If the engine fails to start, there will be no power assisted steering.

## SWITCHING OFF THE ENGINE

Before stopping the engine, ensure that the vehicle is parked safely with the parking brake applied and **P** selected.

Press and release the engine START/STOP button to stop the engine. The audio, telephone and touch screen systems will revert to stand-by mode.

Pressing the START/STOP button again (without pressing the brake pedal), will activate the systems.

### Switching off the engine while the vehicle is moving:

#### **NOTICE**

*It is not advisable to switch off the engine while the vehicle is moving. However, if an emergency situation arises where engine switch off is required urgently, the following*

# Starting the engine

*procedure applies:*

- Press and hold the START/STOP button for 2 seconds, or
- Press and release the START/STOP button twice within 2 seconds.

With either method, the warning message **Engine Stop Button Pressed** will be displayed.

**Note:** *Running out of gas can result in a misfire. This can cause damage to the emission control system.*

## ROLLING RESTART

A rolling restart can be initiated by selecting **N** (neutral) and pressing the engine START/STOP button.

## EMISSION CONTROL SYSTEM

### DANGER

**Exhaust fumes contain poisonous substances which can cause unconsciousness and may even be fatal.**

- Do not inhale exhaust gases.
- Do not start or leave the engine running in an enclosed unventilated area.
- Do not drive the vehicle with the tailgate open.
- Do not modify the exhaust system.
- Exhaust leaks should be repaired immediately.
- If exhaust fumes are thought to be entering the vehicle, have it investigated immediately.

Land Rover vehicles are fitted with emission and evaporative control systems. In many countries it is unlawful to tamper, modify or replace such equipment and legal penalties apply if the laws are flouted.

Land Rover Retailers are properly equipped to perform repairs and to maintain these systems.