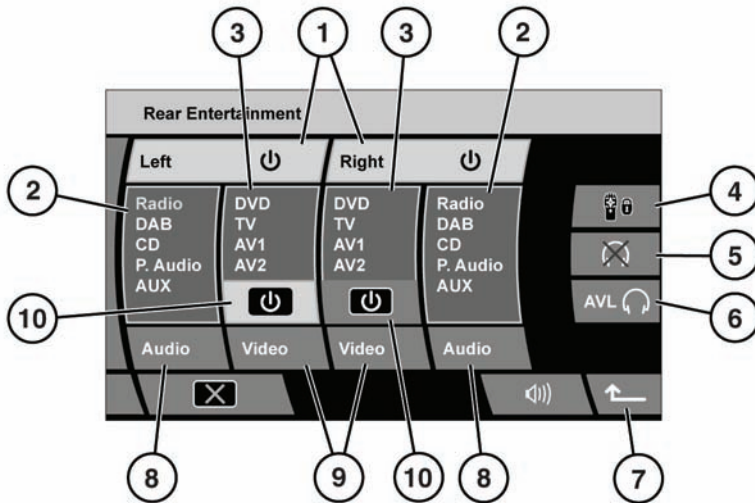


## SUPERVISOR SCREEN



SL1543

1. **Left** and **Right** rear screens on/off.
2. Audio source displays.
3. Video source displays.
4. Remote control lockout. Prevents selections being made from the remote control.
5. Headphones mute.
6. **AVL** - Headphones audio volume limiter. Limits headphones volume to 27 decibels.
7. Return to previous screen.
8. **Audio** source selector.
9. **Video** source selector.
10. Video on/off.

**Note:** The illustration shows all intended audio and video options.

## INTRODUCTION TO REAR SEAT ENTERTAINMENT (RSE)

The RSE system consists of two screens. Separate programmes can be viewed or heard by rear seat occupants. Supervisory control is made from the front seats. Audio and video programmes for each or both sides of the RSE, can be controlled from the Supervisor screen. The RSE remote control can be locked out, headphones can be muted and a volume limit can be set for the headphones.



**The passenger entertainment system should be used only when it is safe to do so. Do not use if it is likely to cause driver distraction. Driver distraction can lead to accidents causing serious injury or death.**



Always run the engine during prolonged use of the RSE system, otherwise, the vehicle battery may become discharged.

## TURNING ON THE RSE

To switch on a rear screen;

1. From the Home menu, select **Rear Entertainment**.
2. From the Supervisor screen, select **Left**, **Right** or both, as required.

**Note:** When a rear screen is turned on, the last used audio or video source for that screen will play. If that source is a DVD, then it will resume play at the point it was previously left. If the source is TV and the desired channel is not displayed, use the remote control or the front screen to re-tune.



Children should be supervised at all times and view/listen to only media suitable for their age group.

To switch off a rear screen completely, select **Left**, **Right** or both again.

To switch off only the video source to a rear screen, touch the appropriate **Video** on/off soft key. The screen will remain backlit ready to display information and messages. Touch the same soft key to turn the screen on again.

## CONTROLLING RSE WITH THE SUPERVISOR SCREEN

When the Supervisor screen is displayed, the RSE remote control will be locked out. No part of the RSE will operate, until it is turned on at the Supervisor screen.

### Selecting an audio source:

The Supervisor screen will display a choice of audio sources: **Radio**, **DAB**, **CD**, **P.Audio** and **AUX**.

To select an audio source;

1. Touch an **Audio** soft key repeatedly until the highlight moves to the audio type you require.

2. After two seconds without any further selections, the selected audio source will play.

**Note:** When watching a video source, an alternative audio source can be selected.

### Selecting a video source:

The Supervisor screen will display a choice of video sources: **DVD**, **TV**, **AV1** and **AV2**.

To select a video source;

1. Touch a **Video** soft key repeatedly until the highlight moves to the video type you require.
2. After two seconds without any further selections, the selected video source will play.

**Note:** When a new video source is selected, the audio source will always be synchronised. However, if an alternative audio source is subsequently selected, synchronisation can be achieved again with a long touch of the relevant **Audio** soft key.

### Remote control lockout:

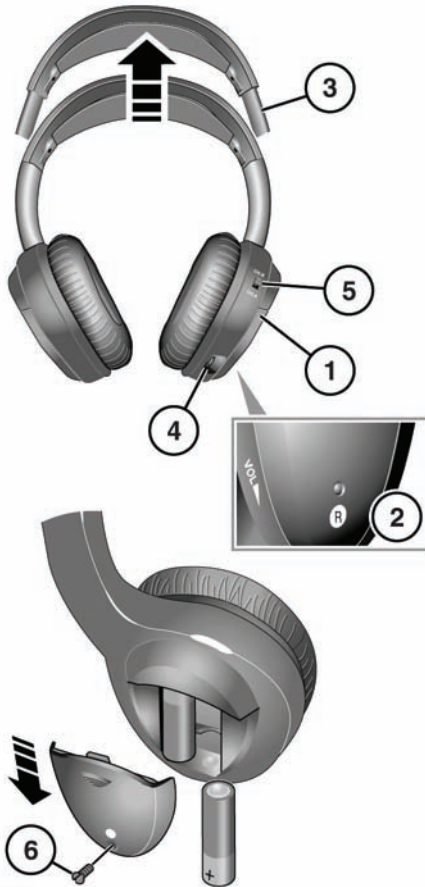
The RSE remote control can be locked out, to prevent selections being made.

Touch the RSE lockout soft key. Touch again to reinstate the remote control.

**Note:** After an ignition cycle and door lock, the RSE lockout soft key defaults to the off state.

## INFRA RED HEADPHONES

*Note: These infra red headphones are not designed for use by a front seat occupant or outside the vehicle.*



SL1663

1. **POWER ON-OFF** button
2. **POWER** indicator
3. Headband adjuster
4. **VOL** volume control

5. **CH.A** and **CH.B** channel selectors for left and right screens
6. **Battery cover fixing**. Two AAA batteries required.

Do not use excessive force when adjusting the headband.

Select the appropriate channel to match the left or right screen.

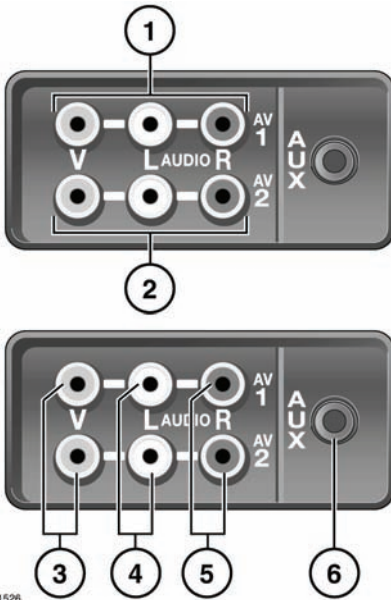
**Note:** The earpiece exteriors must remain exposed to the infra red transmitter in the overhead console. Any barrier will prevent them from working correctly.

When the batteries require replacement the sound quality and volume will be compromised. Remove the battery cover fixing and slide out the cover. Change both batteries with new ones. Refit the cover.

## AUXILIARY CONNECTIONS

Rear seat passengers may wish to use such devices as USB, iPod, games consoles, personal audio/ video players, or playback camcorder video.

The two auxiliary input points **AV1** and **AV2** allow for separate external devices to be used or one device can be used by both rear seat passengers.



SL1526

1. AV1.
2. AV2.
3. Video input - Yellow.
4. Audio input - White. Left channel.
5. Audio input - Red. Right channel.
6. AUX socket for 3.5mm jack plug.

To play an audio source connect the White lead for mono or the White and Red leads for stereo. For a video source connect the Yellow lead.

**Note:** Video signals will be displayed only on the Video Display Screens mounted in the front seat headrests.

**AUX** (Auxiliary Input) mode allows additional equipment to be connected to the vehicle's audio system. Items such as a personal stereo, MP3 player, iPod, hand-held navigation unit etc. can be plugged in to the vehicle's audio system.

**Note:** iPod Shuffle is supported when connected via the Auxiliary Input connector.

USB and iPod connection points are at the front of the vehicle.



**Loose objects within the passenger compartment can cause death or injury in the event of an accident or sudden braking. Ensure that all auxiliary input devices are securely fixed in position.**



Auxiliary input devices may generate heat whilst operating. Do not place devices on the vehicles upholstery or carpets.



Ensure that any auxiliary input devices are suitable for use within a vehicle before using them.



Any auxiliary input devices that are used will require their own power source or a suitable adapter to use power from your vehicle.

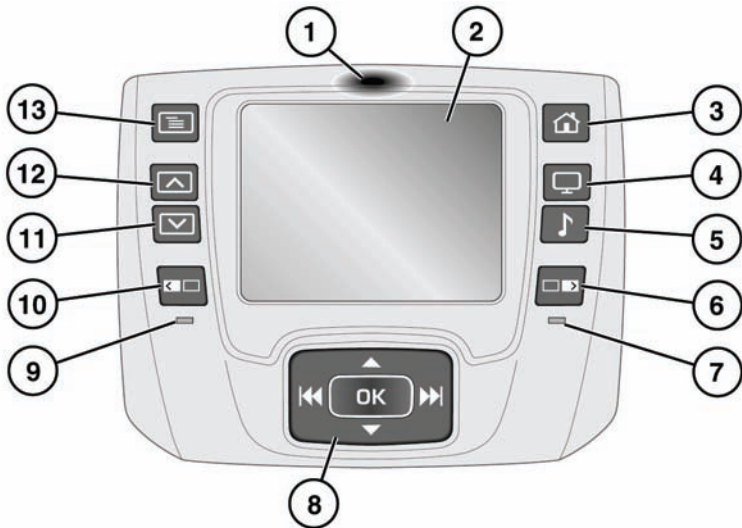


Power supplies, transformers, adapter leads etc. should be fitted professionally to ensure safe operation and avoid damage to the vehicle electrical system.



Auxiliary input devices are not intended for driver use. Do not use if they are likely to cause driver distraction.

## TOUCH SCREEN REMOTE CONTROL



SL1715

**Note:** Hardkeys are the permanent physical buttons on the remote control. Softkeys are those displayed on the touch screen.

1. Press to unlatch the control from the docking station.
  - ! Do not press the touch screen to unlatch the remote control.
2. Touch screen. When a video screen is selected (**6** or **10**), the remote control touch screen becomes active.
3. Use at any time to access the Home menu.
4. Video sources. Use multiple presses to scroll through options.
5. Audio sources. Use multiple presses to scroll through options.
6. Right side video screen. Activates the touch screen to allow control of the right side video screen.
7. Right side tell-tale. Will illuminate when right video screen is selected.

8. Cursor movement and option select control. Hardkey use varies depending on Audio or Video source selection. When in a DVD or CD source the forward and back hardkeys can be held to skip to previous or next chapters or tracks.
9. Left screen tell-tale. Will illuminate when the left screen is selected.
10. Left side video screen. Activates the touch screen to allow control of the left side video screen.
11. Video screen settings - decrease.
12. Video screen settings - increase.
13. Video screen settings. Use multiple presses to scroll through setup options.

**Note:** The remote control will not operate if the front supervisor screen is active.

## UNLATCHING THE REMOTE CONTROL

- ⚠ Do not leave the remote control in direct sunlight. Exposure to extreme temperature can cause damage to the battery.

While the control is in the latched position, the battery is being charged.

If the battery level becomes low during use a **Low battery warning** will be displayed.

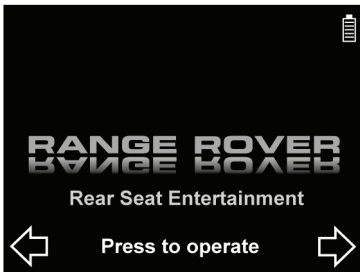
**Note:** *The battery is not serviceable. If a replacement battery is required, contact your Land Rover Dealer.*

The control can be used only after removal from the rear seat centre armrest.

To remove it from its docked position, first press down at position **1** to unlatch it.

- ⚠ Do not attempt to remove the control before it is unlatched.

**Note:** *The remote control communicates with the video screen via an infra red link. Therefore, the control must be pointed at the video screen when making a selection.*



SL1716

The control will display a choice of hardkey presses. Point the control at the relevant video screen and select the left or right video screen hardkey. The **Home** screen is displayed.

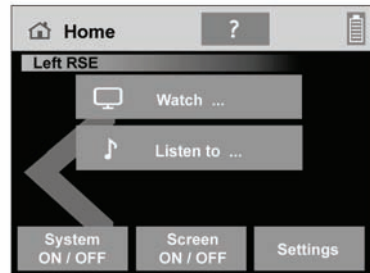
Select **Screen ON/OFF** to turn on the video screen.

## TOUCH SCREEN HEADER

At the top of the touch screen are several elements to aid use and navigation.

- Title of the currently viewed menu.
- Help icon (?). Touch to view a help screen related to the current menu.
- Return icon. Touch to return to the previous menu.
- Battery level indicator. Information only.

## HOME MENU OPTIONS



SL1717

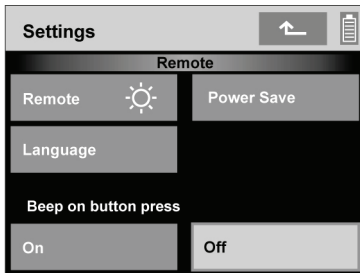
Softkey descriptions:

**Listen to** will display the audio option softkeys.

**Watch** will display the video option softkeys.

Touch the **System ON/OFF** softkey to shut down completely one side of the rear seat entertainment system. Touch again to turn on.

Touch the **Screen ON/OFF** softkey to shut down a video screen but still listen to audio. Touch again to turn on.



SL1718

Touch the **Settings** softkey to:

- adjust brightness of the remote control touch screen or change to night mode,
- to select a power save time, there are three time options,
- to select the display language,
- and to turn the beep on or off.

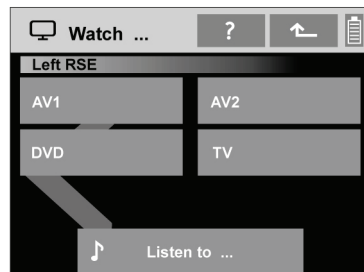
Some sub menus will display a version of the following menu control.



SL1719

This relates to the hardkey control beneath the touch screen. Its use varies depending on Audio or Video source selection.

## WATCH MENU



SL1720

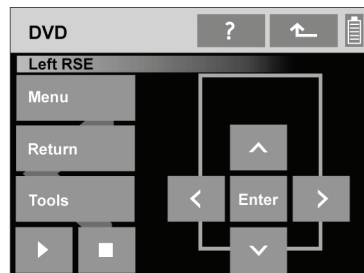
Select AV1 or AV2 if an audio device is connected via the AV1 or AV2 input sockets. See **AUXILIARY CONNECTIONS, 151**.

Select **DVD** to move to the **DVD** control menu.

Select **TV** to move to the **TV** control menu.

Select **Listen to** to move to the **Listen to** menu.

## DVD MENU



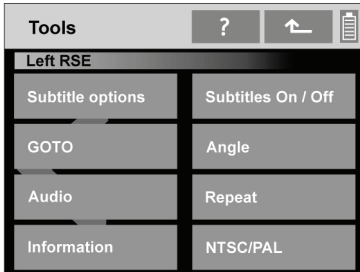
SL1721

Sofkey descriptions:

- **Menu** - displays the DVD menu on the video screen.
- **Return** - displays previous DVD menu on the video screen.
- **Tools** - displays the DVD **Tools** sub menu.
- **Play icon** - plays the DVD.

- **Stop icon** - first press is pre-stop, second press stops the DVD.
- **Menu controls** - moves through the video screen options. Use **Enter** to make a selection.

## TOOLS SUB MENU



SL1722

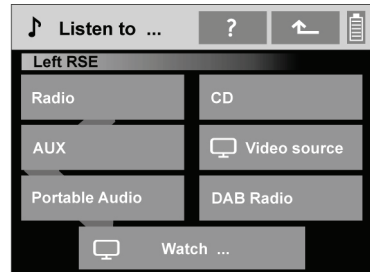
When the **Tools** sub menu is displayed, further detail changes can be made to the DVD programme. Information can be displayed and the video format can be adjusted to suit the DVD.

## TV MENU

Softkey description:

- **Auto/Manual** - touch to toggle between auto and manual tuning. Use the hardkey control to seek for TV channels.

## LISTEN TO MENU

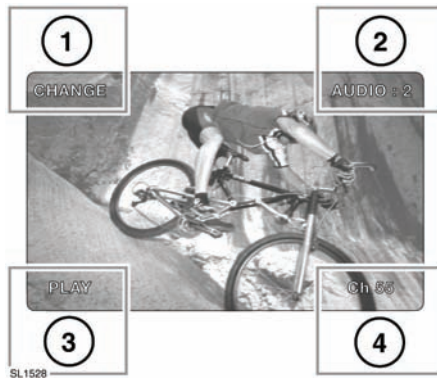


SL1723

Softkey descriptions:

- **Radio** - touch to move to the **Radio** menu. Use the **Band** softkey to move through the available waveband selections. Use the hardkey control to change settings.
- **AUX** - selects the auxiliary audio device connected via the AUX socket. See **AUXILIARY CONNECTIONS, 151**.
- **Portable Audio** - selects the portable audio device connected via the USB or iPod port. Use the hardkey control to change settings.
- **CD** - selects currently loaded CD. Use the hardkey control to change settings.
- **Video source** - select to listen to the audio part only of a video source.
- **DAB radio** - touch to move to the **DAB radio** menu. Use the **Band** softkey to move through the available waveband selections. Use the hardkey control to change settings.
- **Watch** - select to move to the **Watch** menu.

## ON-SCREEN INFORMATION



1. Area for CD and DVD feedback and information.
2. Invalid command messages and audio channel information.
3. CD and DVD feedback and information.
4. Area for TV information

## REAR SCREEN SETTINGS

Access the on-screen menus. Use multiple presses to scroll through setup options.

While the required option is highlighted, the level can be increased or decreased.

Options include:

- BRIGHT (screen brightness).
- COLOUR (screen colour).
- DIMMER (AUTO, DAY and NIGHT). DAY is the brightest setting. NIGHT is the lowest setting.
- DIMMER LEVEL (fine-tune dimmer settings).
- DISPLAY MODE (screen aspect ratio can be adjusted to suit the video media being viewed)

- NTSC/PAL (video signal format)

## VIDEO SIGNAL FORMAT

When the video format option is highlighted, AUTO is the recommended setting.

**NTSC** (National Television System Committee) is the format used in North America.

**PAL** (Phase Alternating Line) format is used in the United Kingdom and other countries around the world.

**Reset to defaults** screen gives the option of resetting display settings. All on screen display settings will revert to their default settings.

## DVD REGION CODES

If a DVD with an incorrect region code is inserted into the DVD player, the message **REGION CODE VIOLATION** will be displayed on the video screens.

***Note:** The DVD player will play only discs marked with the region code for the area in which the vehicle was purchased as new, or discs coded for all regions.*

Region Code	Regions
0	All regions
1	USA, US Territories, and Canada
2	Europe, Japan, South Africa, Middle East
3	Southeast Asia, East Asia (Inc. Hong Kong)
4	Australia, New Zealand, Pacific Islands, Central America, Mexico, South America, Caribbean
5	India, Africa, Russia and former USSR countries
6	China

Region Code	Regions
9	Region Free

## EEC CONFORMANCE

These units conform to the current valid European or harmonised national regulations. The designation is your guarantee of conformance to the applicable specifications concerning electromagnetic compatibility for the unit. This means that interference affecting other electrical/electronic devices caused by your unit, as well as interfering influences on your unit from other electrical/electronic devices can be largely prevented.

### Current valid designations are:

E symbol according to European motor vehicle EMC guideline 95/54/EC, also permits operation in motor vehicles classes (M, N, and O) which received their approval after 01/01/1996.

	THIS DEVICE COMPLIES WITH PART 15 OF THE FCC RULES. OPERATION IS SUBJECT TO THE FOLLOWING TWO CONDITIONS: (1) THIS DEVICE MAY NOT CAUSE HARMFUL INTERFERENCE. (2) THIS DEVICE MUST ACCEPT ANY INTERFERENCE RECEIVED INCLUDING INTERFERENCE THAT MAY CAUSE UNDESIRABLE OPERATION.
DVD VIDEO/VIDEO CD/CD PLAYER 12V D.C. NEGATIVE GND.	PRODUCT IS CERTIFIED BY THE MANUFACTURER TO COMPLY WITH THIS RULES 21 CFR SUBCHAPTER J APPLICATION AT THE DATE OF MANUFACTURE.
<b>R9KWA</b> MADE IN JAPAN	Manufactured under license from Dolby Laboratories. "Dolby" and the double-D symbol are trademarks of Dolby Laboratories. Confidential Unpublished Works. © 1992-1997 Dolby Laboratories, Inc. All rights reserved.
 020819 	<b>PART NO.</b>  <b>Main Ver.</b> <b>VIDEO Ver.</b> <b>PURPLE</b>
Apparatus Claims of U.S. Patent Nos. 4,651,903, 4,577,216, 4,919,096, and 4,907,093 licensed for limited viewing uses only.	
<small>"DTS" and "DTS DIGITAL OUT" are trademarks of Digital Theater Systems, Inc.</small>	

AH42-19G291-AA F11TA 010709 MADE IN HUNGARY BY VISTEON MODEL 15AC VISTEON PNO: VPAPGF-90744-DA SERIAL NO.: V05000064	12V
V05000064	
This device complies with part 15 of the FCC Rules. Operation is subject to the following two conditions: (1) This device may not cause harmful interference and (2) This device must accept any interference received including interference that may cause undesired operation.	

<b>PART NO. Y1P500340</b>
<b>SUPPLIER R9KWA</b>
Contains Mercury-Don't Put in Trash-Recycle or Dispose as Hazardous Waste. THIS DEVICE COMPLIES WITH PART 15 OF THE FCC RULES. OPERATION IS SUBJECT TO THE FOLLOWING TWO CONDITIONS: (1) THIS DEVICE MAY NOT CAUSE HARMFUL INTERFERENCE. (2) THIS DEVICE MUST ACCEPT ANY INTERFERENCE RECEIVED INCLUDING INTERFERENCE THAT MAY CAUSE UNDESIRABLE OPERATION.
 020815 

<b>PART NO. Y1L000053</b>
<b>SUPPLIER R9KWA</b>
THIS DEVICE COMPLIES WITH PART 15 OF THE FCC RULES. OPERATION IS SUBJECT TO THE FOLLOWING TWO CONDITIONS: (1) THIS DEVICE MAY NOT CAUSE HARMFUL INTERFERENCE. (2) THIS DEVICE MUST ACCEPT ANY INTERFERENCE RECEIVED INCLUDING INTERFERENCE THAT MAY CAUSE UNDESIRABLE OPERATION.
 020816 

SL1529