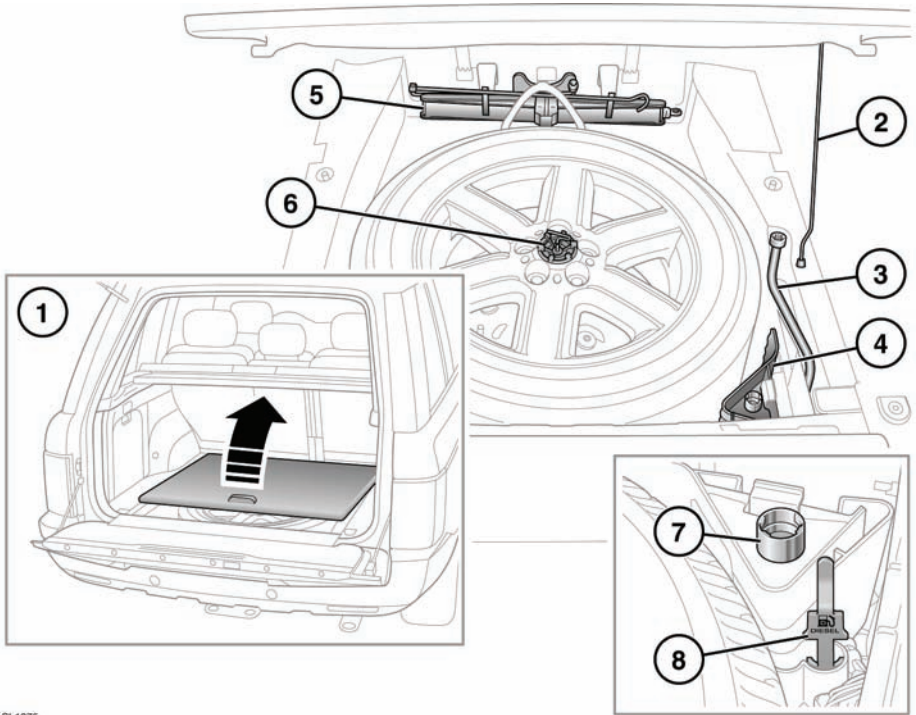


## CHANGING A ROAD WHEEL



SL1375

Before accessing the spare wheel well, fold forward the rear edge or the loadspace cover.

1. Floor hatch.
2. Hatch support stay.
3. Wheel nut brace.
4. Wheel chocks.
5. Jack.
6. Wheel retaining bolt.
7. Locking wheel nut adaptor.
8. Diesel misfuel protector reset tool.



**Wheels are heavy and if handled incorrectly may cause injury. Use extreme caution when lifting or manoeuvring the wheels.**



**Always secure the spare wheel, or the removed wheel, in the correct position using the retaining bolt.**

Always remove the spare wheel before jacking the vehicle.

**Note:** Examine the jack occasionally, clean and grease the moving parts, particularly the screw thread, to prevent corrosion.

## DEPLOYABLE SIDE STEPS

If the vehicle is fitted with the optional deployable side steps, DO NOT attempt to jack up the vehicle. The side steps must be removed before jacking can proceed. Refer to the information supplied with the side steps for removal details. Alternatively, refer to your Warranty Benefits book and contact the appropriate recovery service for assistance.

## USING WHEEL CHOCKS



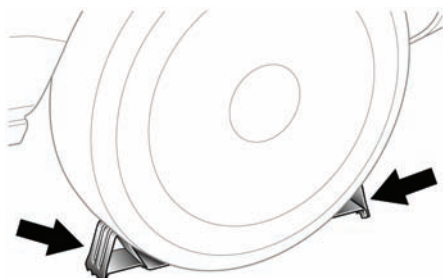
**Before raising the vehicle, the wheel diagonally opposite the one to be removed must be chocked.**



**Always chock the wheels using suitable wheel chocks. Place the chocks on both sides of the wheel diagonally opposite the wheel to be changed.**



**If jacking the vehicle on a slight slope is unavoidable, place the chocks on the downhill side of both wheels on the axle not being raised.**



Both chocks must be used. Position them on opposite sides of the wheel and fully push them home against the tyre.

## REMOVING THE SPARE WHEEL



**Remove the spare wheel prior to jacking the vehicle, to avoid destabilising the vehicle when raised.**



**Do not use power tools to loosen the spare wheel. Doing so may damage the mechanism.**

1. Open the spare wheel access hatch in the loadspace area.
2. Turn the wheel retaining bolt counter clockwise until it comes free.
3. Remove the spare wheel.

## WHEEL CHANGING SAFETY

Before raising the vehicle or changing a wheel, ensure that you read and comply with the following warnings.



**Always find a safe place to stop, off the highway and away from traffic.**



**Ensure that the vehicle and jack are both on firm level ground.**



**Apply the parking brake. Engage Park (P) on automatic vehicles, select 1st or reverse gear on manual vehicles.**



**Switch on the hazard warning lamps.**



**Ensure that the front wheels are in the straight ahead position and engage the steering lock.**



**Disconnect trailer/caravan from vehicle.**



**Ensure that all passengers, and animals, are out of the vehicle and in a safe place away from the highway.**



**Place a warning triangle at a suitable distance behind the vehicle, facing towards oncoming traffic.**



Never place anything between the jack and the ground, or the jack and the vehicle.



Take care when loosening the wheel nuts. The wheel brace may slip off if not properly attached and the wheel nuts may give way suddenly. Either unexpected movement, may cause an injury.



Take care when lifting the spare wheel, and removing the punctured wheel. The wheels are heavy, and can cause injuries if not handled correctly.

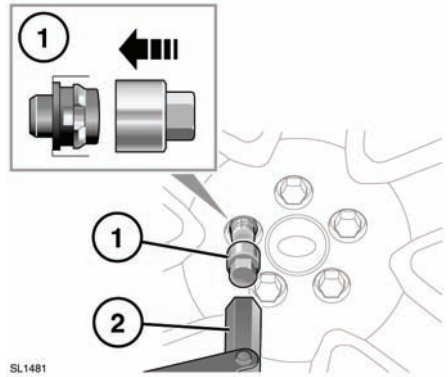
## LOCKING WHEEL NUTS

Locking wheel nuts can be removed using only the special adapter provided in the tool kit.

**Note:** When the vehicle is first supplied, the adapter may be stored in the glove compartment. It should be removed and stored in the tool kit as soon as possible.

**Note:** A code number is stamped onto the underside of the adapter. This number must be recorded on the security card supplied with the literature pack. If a replacement adapter is required, you will be asked to quote this number. The security card must be kept safe, but should not be kept with the vehicle.

## RELEASING LOCKING WHEEL NUTS



1. Insert the wheel nut adapter into the locking wheel nut, ensuring that it is fully engaged.
2. Locate the wheel brace over the adapter and unscrew the wheel nut half a turn counter clockwise.
3. After raising the vehicle on the jack, remove the locking wheel nut.

**Note:** After use store the wheel nut adapter correctly in the tool kit.

## OPERATING THE JACK



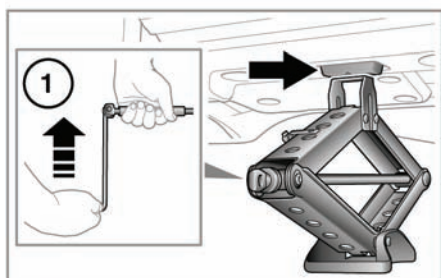
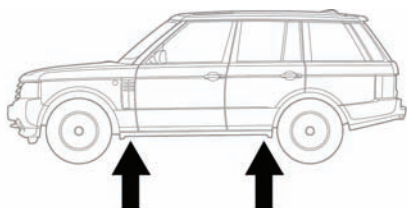
**WARNING:** Do not get under a vehicle that is supported by a jack.



**Position the jack from the side of the vehicle, in line with the appropriate jacking point.**



Jack up the vehicle using only the jacking points described, or damage to the vehicle could occur.



SL1396

1. Locate the jack under the relevant jacking point.
2. Attach the cranking lever to the jack using the adaptor. Fit the wheel nut brace to the end of the cranking lever.
3. Rotate clockwise to raise until the jack pin locates into the jacking point.
4. Continue raising the vehicle until the wheel is clear of the ground.

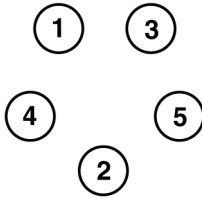
## WHEEL CHANGING



**Ensure the air suspension is set to 'on road' or 'normal' height.**

**Note:** Your vehicle may be fitted with a tilt sensor which activates the alarm if the vehicle is tilted in any direction after it has been locked. To lock the doors while changing the wheel, and avoid the alarm activating, press the smart key lock button twice within 10 seconds. If you prefer to use the door key, use it in the driver's door lock and turn towards the rear of the vehicle twice within 10 seconds.

1. Before raising the vehicle, use the wheel nut brace to slacken the wheel nuts half a turn counter clockwise.
2. Operate the jack to raise the vehicle.
3. Remove the wheel nuts and place them together where they cannot roll away. See **241, RELEASING LOCKING WHEEL NUTS.**
4. Remove the wheel and place to one side. Do not lay the wheel on its face, as this may damage the finish.
5. Fit the spare wheel to the hub.
6. Re-fit the wheel nuts, and lightly tighten them. Ensure that the wheel is making contact with the hub evenly.
7. Ensure that the space under the vehicle is clear of obstructions and lower the vehicle slowly and smoothly.
8. With all wheels on the ground and the jack removed, fully tighten the wheel nuts. The wheel nuts must be tightened in sequence (see illustration) to the correct torque of 140 Nm (103 lb.ft).



SL1140

**Note:** If it is not possible to torque the wheel nuts when a wheel is replaced, they should be set to the correct torque as soon as possible.

If an alloy spare wheel is to be fitted, using a suitable blunt tool, knock the centre cap out of the removed wheel. Using hand pressure only, press the centre cap into the newly fitted spare. Check and adjust the tyre pressure as soon as possible.

## STOWING THE CHANGED WHEEL



**Do not stow the wheel while the vehicle is raised on the jack.**



**Wheels are heavy and if handled incorrectly may cause injury. Use extreme caution when lifting or manoeuvring the wheels.**



**Do not use power tools to tighten the spare wheel retaining bolt. Doing so may damage the mechanism.**

1. Place the wheel into the storage position with the styled face uppermost.
2. Locate and tighten the retaining bolt until the wheel is secure.
3. Ensure that all tools are secured in their correct stowage positions.