

PORTABLE AUDIO



Make sure that any auxiliary devices are stored securely while the vehicle is in motion.



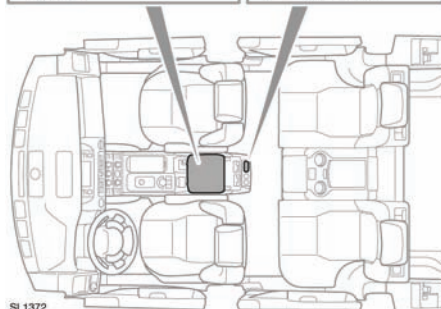
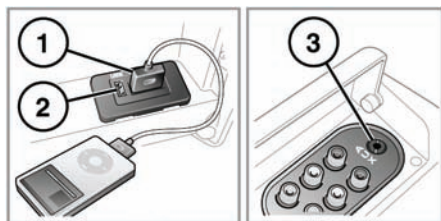
Do not place any item connected to the auxiliary input socket or the auxiliary power socket on the seats, carpets, or other upholstery.



Read the manufacturer's instructions for any device, before it is connected to the audio system.

PORTABLE AUDIO CONNECTIONS

Portable audio devices can be connected to the media hub, located in the cubby box. Auxiliary devices can be connected to the AUX socket at the rear of the centre console.



SL1372

1. USB socket.
2. Portable audio/iPod socket.
3. 35mm AUX socket.

Portable devices that can be connected include:

- USB mass storage devices (e.g. a memory stick). Devices must use FAT or FAT32 file format.
- iPod® (iPod Classic®, iPod touch®, iPhone® and Nano® are supported - full functionality for older devices cannot be guaranteed). iPod Shuffle® functionality cannot be guaranteed.

Note: iPod® is a trademark of Apple Computer Inc., registered in the US and other countries.

Note: A dedicated iPod lead is available from your Land Rover Dealer.

- Auxiliary device (personal audio, MP3 players, all iPods®).

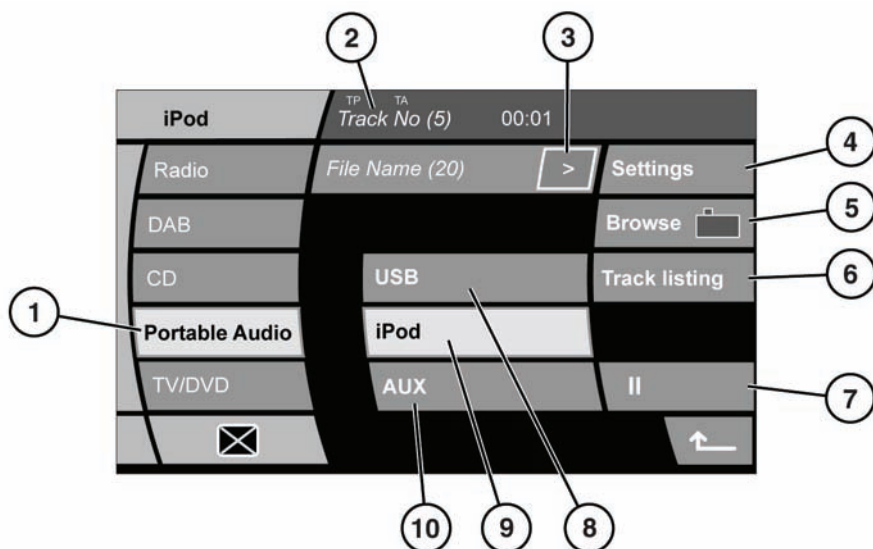
Note: iPod shuffle may be connected via the AUX socket.

If you are connecting an iPod® or mass storage device, use the touch screen to operate and search the device. Many of the controls are similar to those available for CD play.

If you are using any portable media device via the AUX socket, then you must control playback from the device itself.

Note: The audio system will play MP3, WMA, WAV and AAC files.

PORTABLE AUDIO MENU



SL1769

1. **Portable Audio** mode select.
2. Display of information about the current track, including elapsed run-time and play mode (Mix or Repeat).
3. Select to view more detailed information about the current track. Touch briefly to toggle through the information. Touch and hold to display the portable media text pop-up screen. Touch the pop-up to close.
4. **Settings.** Options for:
 - **Random:** Touch briefly to randomly play tracks in the current folder. Touch and hold for 2 seconds to play all tracks on the device.
 - **Repeat:** Touch briefly to repeat the current track. Touch and hold for 2 seconds to play all tracks in the current folder, then repeat.
5. **Browse** (iPod®/USB only):
 - Select to view the contents of the connected device which are displayed as dictated by the file structure of the device.
 - Select a file to start playback (Browse view will remain). Select a folder or subfolder to view their contents.
 - Select **Page jump** to jump through longer lists of items.
 - To return to the Controls menu, select the Back soft key.
6. **Track listing.** Select to view list of available tracks. Scroll to view previous or next tracks. Select a track to review it.
7. **Pause/Play.** Select to pause playback. Select again to resume playback.
8. **USB.** Touch to select playback from a USB device.

9. **iPod.** Touch to select playback from an iPod.
10. **AUX.** Touch to select playback from an auxiliary device.

PLAYING A DEVICE

❗ Disconnect your iPod® when leaving the vehicle. Failure to do so may result in the iPod® battery discharging.

❗ During high ambient temperatures or direct bright sunlight, it is advisable to unplug and remove portable media devices from the vehicle.

When an iPod® is connected, playback will continue from the point at which it was last playing, provided the iPod® battery is in a good state of charge.

When a USB device is connected, playback will start from the first track in the first available folder. If a device is already connected when **Portable Audio** is selected, playback will continue from the point at which it was last playing.

When an auxiliary device is connected, playback will start when the device is switched on and played.

Note: To maximise playback quality, it is recommended that lossless compression is used for any media files on USB or iPod®. Failing this, it is recommended that compressed files utilise a minimum bitrate of 192 kb/s (a higher bitrate is strongly recommended).

Note: Some MP3 players have their own file system that is not supported by this system. To use your MP3 player, you must set it to USB Removable Device or Mass Storage Device mode. Only music that has been added to the device in this mode can be played.

Note: The volume levels and sound quality available from devices connected to the auxiliary inputs may vary widely. If the connected audio device is equipped with a line out socket, as well as a headphone socket, the line out socket should be used.

CONNECTING MULTIPLE DEVICES

❗ Do not plug non-audio devices into the USB port.

You can connect multiple devices to the portable media interface simultaneously and switch between them using the touch screen. Select **USB** or **iPod**, to switch between modes.

The device docked first will remain the active device, until you choose to change.

If, after changing to the newly-docked device, you change back to the first device, play will resume at the point you left it (USB and iPod® only).

Note: You cannot use a USB hub to connect more than one USB device to the audio unit.

Note: Devices connected to the iPod® and USB ports will be charged, but devices that are fully discharged will not play.

Note: Options such as **Repeat** and **Random**, relate to the device currently playing, they will not apply to any subsequent device.

SEARCHING A TRACK

Use the audio fascia hard keys or steering wheel controls for next/previous and fast forward/reverse track searches.

AUX INPUT SOCKET

Note: On vehicles fitted with rear seat entertainment, additional Audio/Visual sockets (AV1 and AV2) are provided. This allows auxiliary equipment (such as a video game console) to be linked to the rear DVD screens. For installation information, please refer to the manufacturer's instructions.