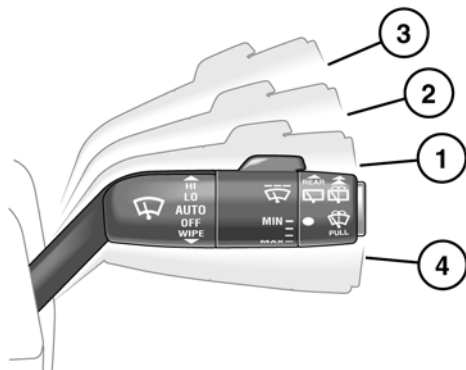
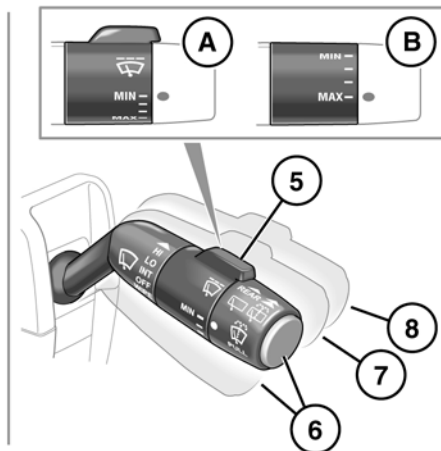



## WINDSHIELD WIPERS




SL.1003





1. Rain sensor activated wipe or intermittent wipe (dependent on option fitted).
2. Low speed wipe.
3. High speed wipe.
4. Single wipe.
5. Rotate the control to adjust rain sensor sensitivity or on vehicles not fitted with a rain sensor, to adjust the intermittent variable delay (non-rain sensor vehicles):
  - A. Rain sensor minimum sensitivity. Intermittent wipe maximum delay.
  - B. Rain sensor maximum sensitivity. Intermittent wipe minimum delay.
6. Windshield washers: Pull the stalk, the windshield wipers will operate in conjunction with the washers for as long as the stalk is held in this position (maximum 10 seconds). The wipers will continue for a further 3 wipes after the stalk is released.  
This feature can also be activated by pressing the button on the end of the stalk.
7. Rear wiper, intermittent operation: Push the stalk to the first position to operate. The frequency of wipes will increase as the vehicle's speed increases. If reverse gear is selected while the front wipers are active, the rear wipers will operate continuously.
 



The rear wipers can be configured to operate continuously by your Retailer.
8. Rear wash/wipe: Push the stalk to the second position to operate.  
The wiper operates automatically during washing and continues for a further 3 wipes after the switch is released.
 


 **CAUTION:** Do not operate the wipers on a dry screen. The drag on the wiper mechanism may cause damage.

 **CAUTION:** In freezing or very hot conditions, ensure that the wipers have not stuck to the glass. The drag on the wiper mechanism may cause damage.

 **CAUTION:** Remove any snow, ice or frost from the screen, around the wiper arms and blades and the screen scuttle, before operating the wipers. The drag on the wiper mechanism may cause damage.

**Note:** If the wiper blades become stuck or jammed, an electronic cut-out may temporarily halt wiper operation. If this happens, switch off the wipers and the ignition. Clear any obstructions and free the wiper blades, before attempting to switch on the ignition.

## RAIN SENSOR VARIABLE DELAY

 **CAUTION:** Ensure that the wipers are switched off before entering a car wash. If the rain sensitive wipers operate during the car washing process, damage may occur to the wiper mechanism.

A rain sensor in front of the rear view mirror is able to detect the presence and amount of rain/dirt/snow on the windshield and automatically activates the wipers accordingly. Static droplets may not be detected on initial start-up, use a single wipe to clear the screen.

To activate the rain sensitivity wipers, move the wiper stalk to position **(1)** and adjust the rain sensitivity control **(5)** as required. When rain sensitive wipers are activated and when sensitivity is increased, a single wipe will operate.

If the sensor detects constant rain, the wipers automatically operate continuously at normal or fast speed.

## INTERMITTENT VARIABLE DELAY

With the stalk in position **(1)** rotate the switch **(5)** to increase or decrease the frequency of the intermittent wipe.

## SPEED-DEPENDENT MODE

If vehicle speed drops below 5 mph (8 km/h) with the wipers operating, the wipers will switch to the next lowest speed. When vehicle speed increases to over 5 mph (8 km/h), the original wiper speed setting is restored automatically.



This feature can be enabled or disabled by your Retailer.

## HEADLAMP POWER WASH

If the headlamps are on, operating the screen washer will also power-wash the headlamps.

Headlamp power-wash operates with every fifth operation of the screen washer, provided that ten minutes have elapsed since the last operation of the headlamp washers.

**Note:** If the fluid level sensor in the screen washer reservoir detects a low level, the headlamp power wash is inhibited.

## REAR WIPER

If reverse gear is selected while the front wipers are operating, the rear wiper will begin automatically and continue as long as reverse gear is selected. The wipe interval is set to 6 seconds.

When stationary, if the tailgate is opened when the rear wiper is operating, it will stop. When the tailgate is closed, the wiper will start to operate again after 3 seconds.

## HEADLAMP WASHERS

If the headlamps are on and there is sufficient liquid in the washer reservoir, operating the screen wash will also power-wash the headlamps.

The headlamp power wash will operate on every fifth operation of the screen washer, provided the headlamps are still switched on and approximately 10 minutes have elapsed since the last headlamp wash.

Switching the headlamps or ignition off and back on again, will reset the cycle.

**Note:** *The headlamp washers are inhibited when the washer fluid reservoir level is low.*

## HEATED WASHER JETS

If the ambient temperature is low enough for icing of the washer jets, heating is applied while the ignition is on.