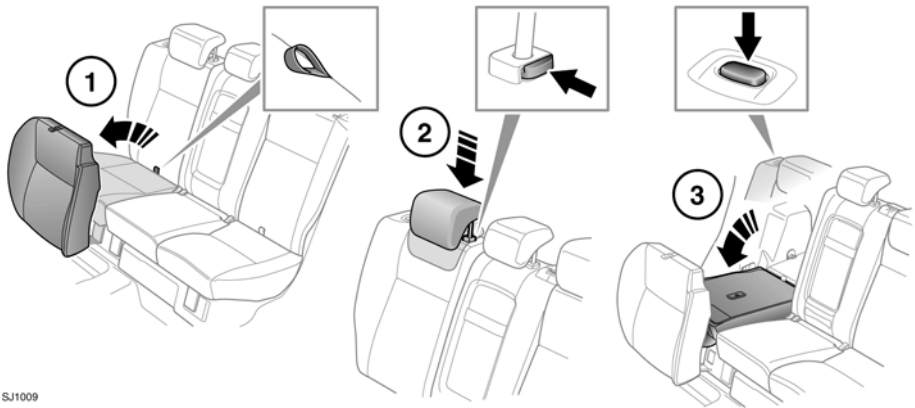


FOLDING THE SEATS



SJ1009

The split folding rear seat can be folded completely to accommodate large loads, or partially to accommodate large loads and still retain seating for passengers.

To fold part or all of the seat:

1. Pull the strap on the required cushion(s), to raise to the vertical position.
2. Fully lower the head restraints.
3. Press the seat backrest release button(s), then lower the backrest(s) until locked into place.



Ensure that when the backrest is raised the locking mechanism is fully engaged. If the backrests are not fully locked in place, red markers will be visible around the backrest buttons.

FOLDING AND ERECTING THE SEATS



Always ensure that objects carried within the vehicle are secured properly.



Never allow passengers to travel in the load space under any circumstances. All vehicle occupants should be seated correctly, and wear a seat belt at all times when the vehicle is in motion.