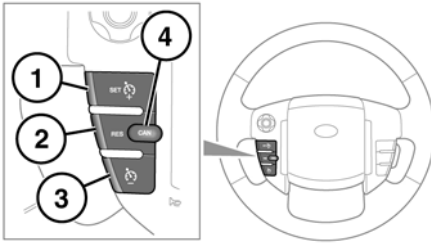


USING CRUISE CONTROL



1. Set target speed, or increase speed.
2. Resume set speed.
3. Decrease set speed.
4. Cancels cruise control operation without erasing memorized speed.

Note: Cruise control is not available when using Hill Descent Control or when a Terrain Response special program has been selected.

Note: Do not use cruise control when driving off-road.

Note: Do not use cruise control with **SPORT** mode selected.

ENGAGING CRUISE CONTROL



WARNING: The driver must always ensure that a safe speed is maintained within the speed limit, taking account of traffic and road conditions.



CAUTION: Do not use cruise control in traffic conditions where a constant road speed cannot be easily maintained, or on winding or slippery road surfaces.



CAUTION: When setting the cruise control to the speed limit, it is important to remember that it is possible for the vehicle speed to increase when travelling downhill. This may result in the vehicle speed exceeding the speed limit.

Note: Cruise control can only be engaged at speeds in excess of 18 mph (30 km/h).

Accelerate until the desired speed is reached, then press the **+** switch (1) until the warning lamp illuminates. This sets the vehicle speed into the system's memory. Cruise control will now maintain that speed.



The cruise control warning lamp will illuminate to confirm cruise control is operational. Speed can be increased using the accelerator pedal as normal. As soon as the accelerator pedal is released, the vehicle speed will return to the set cruising speed.

Note: If the accelerator pedal is pressed for more than 5 minutes, cruise control cancels.

SUSPENDING CRUISE CONTROL

Cruise control can be suspended by a single press of the cancel switch (4).

Cruise control will also be suspended if the brake pedal is pressed, the gear selector is moved to **N**, or if HDC or DSC are activated.

To resume cruise control at the previous set speed, press the resume switch (2).

Note: The set speed will not be erased by pressing the cancel switch. The set speed can only be erased by switching off the ignition.

DECREASING THE CRUISE SPEED

To reduce cruising speed, press and hold the - switch (3). Release the switch when the desired speed is reached, the new speed will be set and maintained.

The set speed can be decreased in steps of 1 mph (2 km/h) by briefly pressing the - switch.

INCREASING THE CRUISE SPEED

Use the accelerator or press and hold the + switch (1) to increase speed. Release the switch when the desired speed is reached, the new speed will be set and maintained.

The speed can be increased in steps of 1 mph (2 km/h), by briefly pressing the + switch (1). When the desired speed is reached press the + switch to set and maintain the new speed.