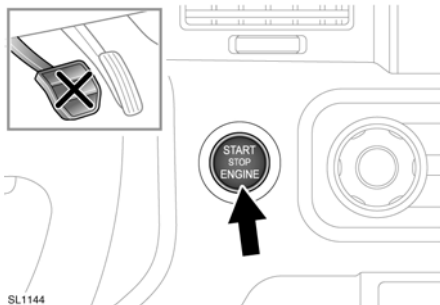


## SWITCHING ON THE IGNITION

To turn on the ignition without starting the engine. Ensure the brake pedal is not depressed, and with a valid Smart Key present in the vehicle, press the START/STOP button and hold until the warning lamps illuminate, then release the button.



**CAUTION:** If the brake pedal is applied when the start/stop button is pressed, the engine will start.

## BATTERY CHARGING - RED



Illuminates as a bulb check when the ignition is turned on and extinguishes once the engine is running. If it remains on, or illuminates while driving, a fault with the battery charging system is indicated. Seek qualified assistance urgently.

## KEYLESS STARTING



**WARNING:** Never start the engine and leave it running when the vehicle is in an enclosed space. Exhaust gases are poisonous and can cause unconsciousness and death if inhaled.

To start the engine:

- The Smart Key must be inside the vehicle.
- **P** or **N** must be selected.
- Apply the brake pedal.
- Press and release the START/STOP button.

Once the engine has started, the brake pedal can be released if it safe to do so.

## IF THE ENGINE FAILS TO START

**Note:** If the engine fails to crank when the START/STOP button is pressed, and there has been a recent collision, the fuel system inertia switch may have been tripped. Seek qualified assistance.

If the engine persistently fails to start, make sure the transmission is in **P** or **N** and press the START/STOP button (without applying the brake pedal) to switch on the ignition. Slowly depress the accelerator pedal fully, then hold it in the fully down position and press the START/STOP button with the brake pedal applied. The engine will then begin to crank. Release the accelerator pedal when the engine starts.

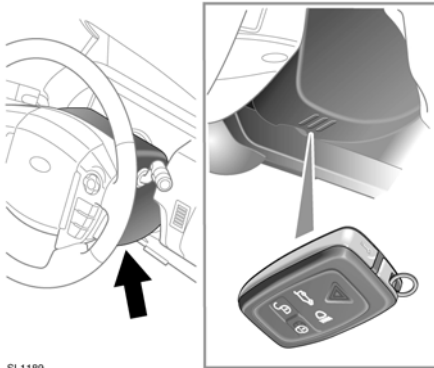
If the engine fails to crank, or fails to start, consult your Land Rover Retailer/Authorized Repairer.

# Starting the engine

## KEYLESS START BACKUP

If the vehicle has been unlocked using the emergency key blade or the Smart Key is not detected by the vehicle, it will be necessary to use the keyless start backup to disarm the alarm and start the engine.

The keyless start backup can only be used when the message **Smart Key Not Found Place As Shown** is displayed in the message center.



SL1189

Position the Smart Key against the underside of the steering column cover with the buttons facing downwards.

**Note:** There are markings on the cover to help locate the correct position.

When the Smart Key is positioned in this area, it will be recognized by the vehicle and the message **Smart Key Recognized** will be displayed in the message center.

Holding the Smart Key in position and the brake pedal depressed, press and release the START/STOP button to start the engine.

Once the engine has been started, you no longer need to hold the Smart Key against the steering column cover.

**Note:** If the Smart Key is not recognized or the engine still fails to start, consult your Land Rover Retailer/Authorized Repairer.

## SWITCHING OFF THE ENGINE

Before stopping the engine, ensure that the vehicle is parked safely with the parking brake applied and **P** selected.

Press and release the engine START/STOP button to stop the engine. The audio, telephone and touch screen systems will revert to stand-by mode.

Pressing the START/STOP button again (without pressing the brake pedal), will activate the systems.

**Switching off the engine while the vehicle is moving:**



**CAUTION:** It is not advisable to switch off the engine while the vehicle is moving. However, if a situation arises where engine switch off is urgent, the following procedure applies:

1. Press and hold the START/STOP button for 2 seconds, or
2. Press and release the START/STOP button twice within 2 seconds.

With either method, the warning message **Engine Stop Button Pressed** will be displayed.

## ROLLING RESTART

A rolling restart can be initiated by selecting **N** (neutral) and pressing the engine START/STOP button.