

## RECOMMENDED TOWING WEIGHTS

Maximum permissible towing weights	On-road	Off-road
Unbraked trailers	1654 lbs (750 kg)	1654 lbs (750 kg)
Trailers with overrun brakes	7716 lbs (3500 kg)*	2205 lbs (1000 kg)
Tongue weight	550 lbs (250 kg)	550 lbs (250 kg)



**WARNING:** In the interest of safety, the **Gross Vehicle Weight, maximum rear axle weight, maximum trailer weight and tow hitch load (tongue weight) must not be exceeded.**

See **189, WEIGHTS**, for details of the Gross Vehicle Weight (GVW), Gross train weight, axle weights and maximum payload.

**Note:** When calculating rear axle loading, remember that the trailer tongue weight, the load in the vehicle's luggage area, weight on the roof rack, and the weight of rear seat passengers must all be added together. These combined weights must never exceed the GVW or the individual axle maximum loads.

## TRAILER ELECTRICAL CONNECTION



**CAUTION:** Only connect approved electrical circuits, which are in good condition, to the trailer socket.



When a trailer electrical connection is made, and the vehicle's direction indicators are used, the trailer warning lamp will flash in time with the direction indicators.

**Note:** The high speed height suspension setting is disabled while the trailer electrics are connected.

## LEVELLING

To maintain vehicle stability, it is essential that the trailer is loaded so that it remains parallel to the ground. This is particularly important when towing twin axled trailers.

## TOWING A TRAILER



**WARNING:** Never exceed the maximum weights for either the vehicle, or the trailer. Doing so can cause accelerated wear and damage to the vehicle. It can also adversely affect vehicle stability and braking which in turn can lead to loss of control and increased braking distance, resulting in a rollover or crash.



**WARNING:** To preserve handling and stability, only fit Land Rover approved towing accessories.



**WARNING:** Never use towing eyes or lashing points to tow a trailer. They have not been designed for this purpose and doing so may cause them to fail, resulting in injury or death.



**WARNING:** When towing, do not exceed 60 mph (100 km/h), or 50 mph (80 km/h) if the temporary spare wheel is in use.



**WARNING:** The tongue weight of the vehicle's load carrying area and rear seat passengers, must never exceed the specified maximum rear axle load. Exceeding allowable vehicle and axle loads will increase the risk of tire and suspension failure, increase vehicle brake stopping distance and adversely affect vehicle handling and stability. This may result in a crash or rollover.



**CAUTION:** To avoid overheating the gearbox, it is not advisable to tow heavy trailer loads at speeds of less than 21 mph (32 km/h) in High range. Select Low range instead.

**Note:** It is the driver's responsibility to ensure that the towing vehicle and trailer are being used correctly in accordance with manufacturer's recommendations and any applicable legislation, including the use of the correct size towing hitch for the trailer.

## TRAILER STABILITY ASSIST (TSA)

**Note:** This feature may not operate with all trailer designs.



**CAUTION:** Trailer Stability Assist (TSA) will not operate in the event of the trailer jack-knifing.



**CAUTION:** The ability of the system may be reduced when travelling on slippery surfaces.

TSA is an automatic feature to assist the stability of a trailer when towing.

**Note:** TSA will not operate when DSC is switched off.

## ESSENTIAL TOWING CHECKS

- When calculating the laden weight of the trailer, remember to include the weight of the trailer, plus the weight of the load.
- If the load can be divided between the vehicle and trailer, loading more weight into the vehicle will generally improve stability. Do not exceed the vehicle's weight limits.
- For maximum stability, ensure that loads are properly secured and unable to shift position during transit. Also, position loads so that most of the weight is placed close to the floor and, where possible, immediately above or close to the trailer axle(s).
- Increase rear tire pressures of the towing vehicle to those for maximum vehicle loading conditions.
- Ensure trailer tire pressures are set to trailer manufacturer's recommendations.
- If the vehicle is loaded to maximum Gross Vehicle Weight (GVW) the tongue weight is limited to 550 lbs (250 kg). See **189, WEIGHTS**.
- Ensure that a suitable breakaway cable or secondary coupling is used. Refer to the trailer manufacturer's instructions for guidance.
- Ensure that the tow hitch is secure.
- Check the operation of all trailer lights.



**WARNING:** Do not loop the breakaway cable over the tow hitch as it may slide off.



**WARNING:** Do not exceed the Gross Vehicle Weight (GVW), maximum rear axle weight, maximum trailer weight, or tongue weight. Exceeding any of these limits could cause instability and loss of control.

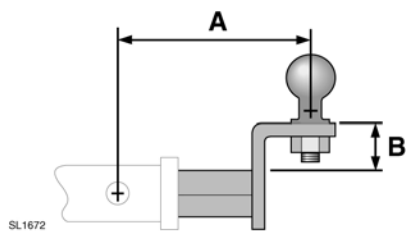
## TOW HITCH



**WARNING:** When handling the tow hitch, hold the bottom of the component. Locking into position occurs automatically and causes the locking lever to rotate under spring pressure.

The tow hitch is stowed in the loadspace tool kit. See **214, TOOL KIT**.

The optional trailer hitch is rated as a Class III. When selecting a drawbar for the receiver, the following dimensions must be adhered to:

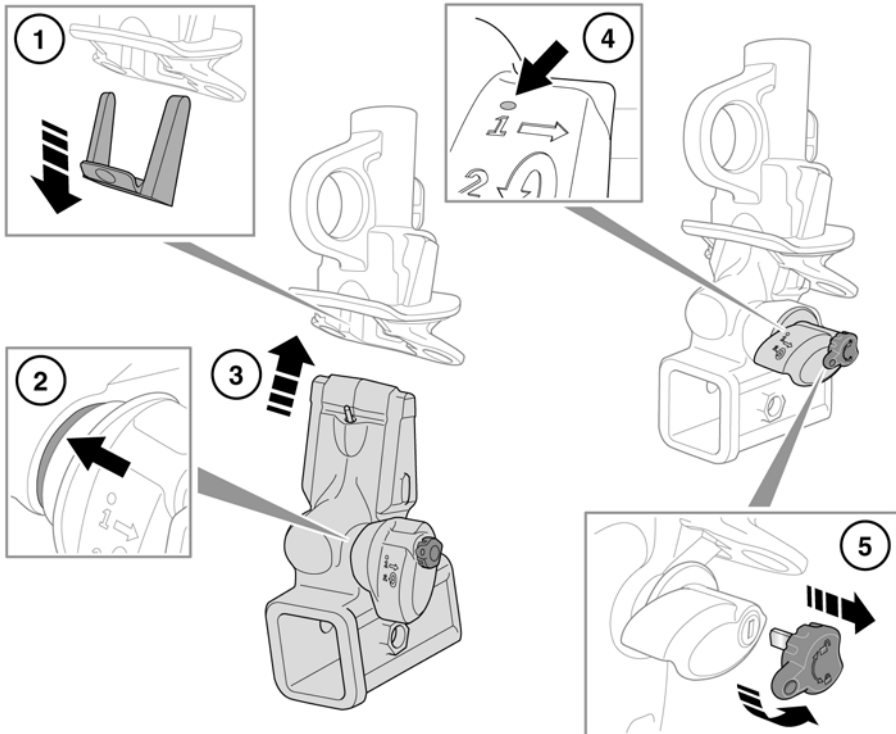


**A.** Drawbar length = 9 inches (228 mm).

**B.** Drawbar rise = 1.5 inches (38 mm).

Consult your Land Rover Retailer/Authorized Repairer for the most up-to-date information.

## FITTING THE DETACHABLE TOW HITCH



SL1753

1. Remove the protective cover from the tow hitch and stow it in the tow hitch storage area.
2. The tow hitch can only be installed when the green locking lever is in the unlocked position.
3. Insert the tow hitch into the mounting and push firmly upwards until the tow hitch locks into position.
4. The red marker must be completely covered by the green locking lever.
5. Turn the key counterclockwise to lock the tow hitch and remove the key before towing.

## REMOVING THE DETACHABLE TOW HITCH

Removal of the tow hitch is the reverse of fitting.

**Note:** The key cannot be removed when the tow hitch has been detached.