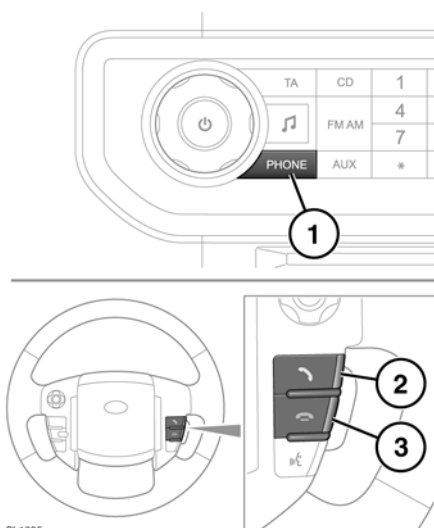


TELEPHONE CONTROLS



1. Press to activate or deactivate telephone mode.
2. Press to answer a call or to dial a number.
3. Press to end a call or to reject an incoming call.

BLUETOOTH® INFORMATION



Bluetooth® is the name for short-range radio frequency (RF) technology that allows electronic devices to communicate wirelessly with each other.

The Land Rover Bluetooth® system supports Bluetooth® Hands-Free Profile (HFP).

Before use, your mobile phone must be paired and docked with the vehicle's Bluetooth® system. This is done via your mobile phone. See **PAIRING AND DOCKING USING YOUR MOBILE PHONE** (page 137).

Once a mobile phone has been paired and docked with the vehicle, the system will attempt to connect with the last docked phone each time the ignition is switched on.

As these mobile phones have a wide range of audio and echo characteristics, it may take a few seconds for the vehicle's Bluetooth® system to adapt and deliver optimum audio performance.

To get the best performance and minimal echo and noise from the hands-free system, it may be necessary to reduce the in-vehicle volume and ventilation fan speed slightly.

TELEPHONE SAFETY



WARNING: Use of your telephone while you are driving is dangerous as it diverts attention from the traffic situation. If you wish to use your telephone, stop at an appropriate place where you are not endangering or inconveniencing other vehicles.



WARNING: Switch off your telephone in areas with a high explosion risk. This includes filling stations, garages, fuel storage areas or chemical factories, as well as places where the air contains fuel vapour (such as an open vehicle hood), chemicals or metal dust. The telephone could trigger an explosion, or cause a fire.



WARNING: The functioning of cardiac pacemakers or hearing aids may be impaired when the phone is in use. Check with a doctor or manufacturer whether any such devices you or your passengers are using, are sufficiently protected against high-frequency energy.

The Health Industry Manufacturers' Association recommends that a minimum separation of 6 inches (15 centimetres) is maintained between a wireless phone antenna and a pacemaker, to avoid potential interference with the pacemaker. These recommendations are consistent with the independent research by, and recommendations of, Wireless Technology Research.



WARNING: Always stow your mobile phone securely. In an accident, loose items can cause injury.

TELEPHONE COMPATIBILITY

The Bluetooth® telephone system can be used with an appropriate Bluetooth® equipped mobile telephone.

Note: *Some Bluetooth® mobile phones are better than others at utilizing the full potential of the vehicle's Bluetooth® system.*

Please refer to the OWNERSHIP section of the Land Rover website at www.landrover.com, Select Bluetooth for a list of compatible phones. Alternatively, please refer to your Land Rover Retailer/Authorized Repairer.

Note: *The Bluetooth® equipped phones listed, have been tested for compatibility with Land Rover vehicles. Performance will vary, based on the phone's software version, battery condition, coverage and your network provider. Phones are warranted by their manufacturer, not Land Rover.*

The Bluetooth® system supports Bluetooth® Hands Free Profile 1.5 (HFP 1.5). If the mobile phone paired to the system also supports this profile, additional features will be available such as battery meter, signal strength and network operator. If the mobile phone does not support these features, they will not be available on the touch screen. However, you can refer to the mobile phone's display to determine these items.

PAIRING AND DOCKING USING YOUR MOBILE PHONE

Note: *The process of pairing and docking your phone with the vehicle using your mobile phone, will vary depending on the type of mobile phone used.*

1. Switch the ignition system on and ensure that the touch screen is active and that no other phone is currently docked to the vehicle's Bluetooth® system.
2. Using the mobile phone, search for Bluetooth® devices. On some phones, this is referred to as a new paired device. See your phone's operating instructions for further information.
3. When the vehicle's Bluetooth® system is discovered (named Land Rover), select this device from the list.
4. When prompted, enter the Bluetooth® PIN (Personal Identification Number). When pairing and docking from your mobile phone, this number is always 2121.
5. Once your phone is paired and docked to the system, it can dock automatically. If it does not automatically dock, you will have to dock manually with the Land Rover Bluetooth system, via the mobile phone. Please consult the mobile phone's instructions for further information.

Note: *Some mobile phones do not automatically dock and will require to be manually docked.*

Some mobile phones require you to authorize the connection each time you start the system. To change this, you must set Land Rover as being authorized in the mobile phone's known device list. Please consult the mobile phone's instructions for further information.

CALL VOLUME

The phone call volume is operated by the audio system's volume control.

If the audio system is in use when a phone call is active, the audio source is suppressed for the duration of the call. Navigation instructions and parking aid warnings are not suppressed.

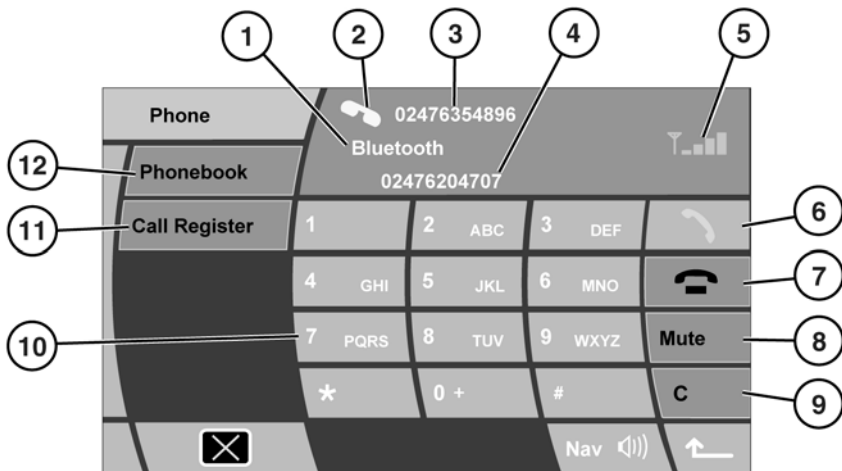
ANSWERING/REJECTING/ENDING CALLS

- Press the Make/Answer button on the steering wheel to answer an incoming call.
- Press the **End** button on the steering wheel to reject an incoming call.
- Press the **End** button on the steering wheel to terminate a call.

DIALLING

1. With Telephone mode activated, use the numeric keys to enter a telephone number.
2. Press **OK** to dial the number.

TOUCH SCREEN OVERVIEW



SL1096



WARNING: Do not adjust the main audio unit's controls, or allow the system to distract the driver while the vehicle is moving.

Driver distraction can lead to accidents causing serious injury or death.

1. Network name. Bluetooth is displayed if no network is available.
2. Active call icon.
3. Call information.
4. Scratchpad line. Record a phone number during a call.
5. Signal strength indicator.
6. Connect icon. Use to make or accept a call.
7. Disconnect icon. Use to end or reject a call.
8. Mute the call.
9. Clear. Brief touch to delete last number. Touch and hold to delete complete number.

10. Numeric keypad.

11. Call Register. Lists all phone messages.

12. Select to access the Phonebook.

DIGIT DIAL

Once your phone is docked, Digit Dial is the default screen in Phone mode.

Using the on-screen keypad, enter the required number. Up to 20 digits are acknowledged. If more numbers are entered, an error message will be displayed. Touch the connect icon to send.

Alternatively, briefly press the steering wheel connect switch.

Note: When entering a number, you can change the phone number shown on the touch screen using the **C** button. A momentary touch erases a single digit, a long touch erases the complete number.

LAST NUMBER REDIAL

If your mobile phone supports this feature, it will be available on screen.

1. Touch the Connect icon.
2. The last dialled number will be displayed and dialling will commence.

Alternatively, press and hold the steering wheel connect switch to redial the last number dialled.

INCOMING CALLS

When a new call is incoming and the Phone display is not active, an information pop-up will appear. Touch the displayed Connect icon to receive the call.

Alternatively, briefly press the steering wheel connect switch.

To reject the call, touch the displayed Disconnect icon or press the steering wheel disconnect switch.

ENDING A CALL

With the Phone display active, touch the Disconnect icon. When an alternative mode is active, press the Phone button on the audio fascia then the Disconnect icon.

Alternatively, press the steering wheel disconnect switch.

SCRATCHPAD

This function allows a number to be entered during an active phone call. After ending the call, the scratchpad number will move up to the top area of the screen.

To dial that number, touch the Connect icon or use the **C** soft key to delete it.

CONTINUING A CALL WITH IGNITION OFF

If you need to turn off the ignition during a telephone conversation, there are two choices of how to continue the telephone call.

1. If you want to continue using the vehicle telephone system, ensure that the audio system is ON before turning off the ignition.

The vehicle telephone system will continue to be available while the current phone call is active. When the phone call is terminated the vehicle system will shut down.

2. If you want to continue the phone call using your mobile phone, ensure that the audio system is turned OFF before turning off the ignition.

PHONEBOOK

Certain mobile phones store phonebook contacts in two different areas, on the SIM card and on the phone memory. Where possible, the vehicle will download and display contacts from both areas.

When a phone is removed from the vehicle and the Bluetooth link is broken, the phonebook will be deleted from the vehicle system.

To access the phonebook:

1. Select the **Phone** menu.
2. Select **Phonebook**.
3. The phonebook screen is displayed.

There are 2 methods to access contacts from the phonebook, via the scroll list or via the search feature:

Method 1 - using the scroll feature:



SL1607

1. Use the scroll arrows to view the contacts list.
2. Contact names and numbers are displayed alongside a Connect icon.
3. When the required contact is displayed, touch the Connect icon.

Method 2 - using the search feature:



SL1608

1. Use the keyboard to enter the contact name. If an error is made, use the **Delete** soft key.
2. When the required contact is displayed, touch the Connect icon.

CALL REGISTER

In this area you can view lists of phone messages, details of previous calls, missed calls and received calls.

A call can be made to any of the contacts within the different areas of the call register. Touch the icon corresponding to the contact you want to call. If a call is made the display reverts to Phone mode.

Note: These functions will be available only if your phone is capable of sending the call lists to the vehicle.

Accessing phone messages:

1. Touch the **Call Register** soft key.
2. The Phone Messages menu is displayed.

Accessing previously dialled numbers:

1. Touch the **Call Register** soft key.
2. The Phone Messages menu is displayed.
3. Touch the **Dialled** soft key.
4. The Last Dialled menu is displayed.

Accessing missed calls:

1. Touch the **Call Register** soft key.
2. The Phone Messages menu is displayed.
3. Touch the **Missed** soft key.
4. The Missed menu is displayed.

If a call is missed while the Phone menu is displayed, touch the **Call Register** soft key to access caller information.

If a call is missed while in another display mode, an information pop-up will appear with a View List option. Select **View List** to display the missed call(s).

Accessing previously received numbers:

1. Touch the **Call Register** soft key.
2. The Phone Messages menu is displayed.
3. Touch the **Received** soft key.
4. The Received menu is displayed.

TELEPHONE VOICE CONTROL



WARNING: Do not use voice control when placing emergency calls.

Press and release the voice button on the steering wheel. After the tone, speak one of the commands. If the system asks for more information, wait until the tone has sounded before replying.

To cancel a voice control session, press and hold the voice button until a double tone sounds.

TELEPHONE VOICE COMMANDS

The voice control system understands predefined commands, which need to be spoken word for word. For each of the following commands, **phone** can be substituted by **telephone**.

- PHONE DIAL NUMBER.
- PHONE DIAL NAME.
- PHONE REDIAL.
- PHONE STORE NAME.
- PHONE PLAY DIRECTORY.
- PHONE DELETE DIRECTORY.
- PHONE HELP.

When using these commands, the system will guide you through the process. After each prompt for a response, wait for the tone before responding. Some responses are a simple **YES** or **NO**.

When using the **PHONE DIAL NUMBER** command, the phone number can be given as a series of single digits from zero to nine. You can also speak the number in groups of three to six digits. If you use this method, always wait for the system to respond with **CONTINUE** before providing the next group of numbers.

When making a call to another country, start the number with the command **PLUS**, then start the number with the country code.

When prompted with the **CONTINUE** message, the following commands are available to use.

- **DELETE** - Deletes all digits entered.
- **CORRECTION** - Deletes the last entered digit.
- **CANCEL** - Cancels dialogue.
- **DIAL** - Dials the entered number.

The **PHONE REDIAL** command can be used to dial the last number used.

TELEPHONE VOICE NAMETAGS

The voice control system allows you to enter nametags against telephone numbers.

To store a nametag, use the command **PHONE STORE NAME** and follow the prompts to enter the number and your nametag.

When prompted with the Continue message, the following commands are available to use.

- **DELETE** - Deletes all digits entered.
- **CORRECTION** - Deletes the last entered digit.
- **CANCEL** - Cancels dialogue.
- **STORE** - Stores the entered number.

To dial a number stored under a nametag, use the command **PHONE DIAL NAME** and follow the prompts.

To play all the nametags stored in the directory, use the command **PHONE PLAY DIRECTORY**. The list can be interrupted at any time by using the following commands.

- **DELETE** - Deletes a nametag and associated telephone number.
- **DIAL** - Dials the number associated to the nametag.
- **REPLAY** - Replays the nametag list.
- **CANCEL** - Cancels playback.
- **EDIT** - To edit the nametag or associated telephone number.

To delete all entries in the vehicle voice recognition phone directory, use the command **PHONE DELETE DIRECTORY** and follow the prompts. You will be asked twice to confirm deletion.

The contacts and numbers deleted are only those copied to the vehicle directory. This process cannot delete the directory stored on the mobile phone.

ADDING A NEW NUMBER AND NAMETAG

A new contact can be stored via the touchscreen.

1. From the Home menu, select **Settings**.
2. Select **Voice Settings**.
3. Select **Voice Add Name**.
4. Using the keypad, enter the telephone number.
5. Select **Add** to initiate the voice recognition **PHONE STORE NAME** function.
6. Follow the prompts to add a nametag.

TYPE APPROVAL

FCC WARNING

Changes or modifications not expressly approved by the party responsible for compliance could void the user's authority to operate the equipment.

This device complies with Part 15 of the FCC Rules and RSS-Gen of the IC Rules. Operation is subject to the following two conditions:

- This device may not cause interference, and
- This device must accept any interference, including interference that may cause undesired operation of this device.

This equipment with FCC/IC radiation exposure limits set forth for uncontrolled equipment and meets the FCC radio frequency (RF) Exposure Guidelines in Supplement C to OET65 and RSS-102 of the IC radio frequency (RF) Exposure rules. This equipment has very low levels of RF energy that it deemed to comply without maximum permissive exposure evaluation (MPE).

But it is desirable that it should be installed and operated with at least 20 cm and more between the radiator and person's body (excluding extremities: hands, wrists, feet and ankles).

The radio frequency approval numbers for the USA and Canada are:

- Phone with touch screen:
USA FCC ID: LHJ89FT7024
Canada IC: 2807E-89FT7024
- Phone without touch screen:
USA FCC ID: WJLRX-42
Canada IC: 7847A-RX42