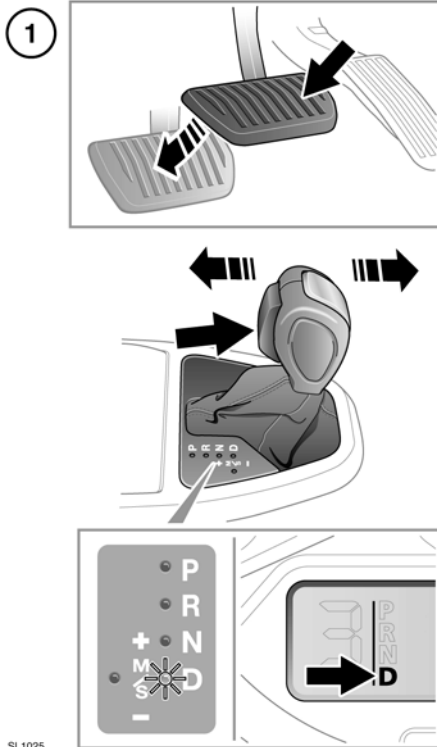


AUTOMATIC TRANSMISSION

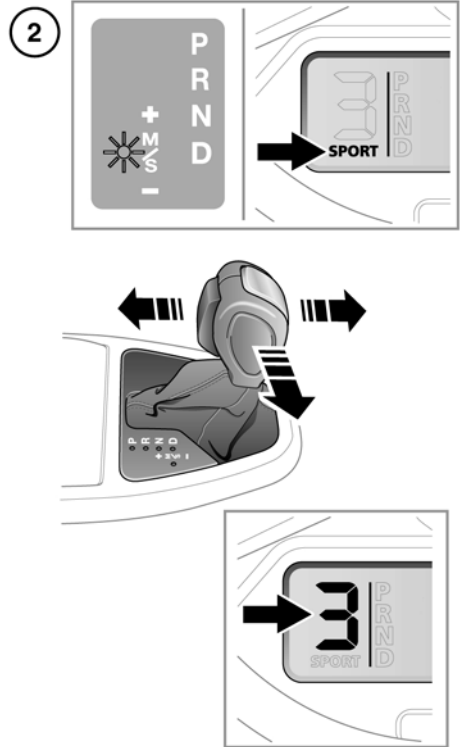


SL 1025

1. To select Drive (**D**) when the vehicle is stationary, apply the foot brake and press the gear selector release button.

Note: If pressure is applied to the selector lever before the foot brake is applied, any gear selected may not be available, irrespective of the lever position. In this situation, remove pressure from the selector lever, ensure that the foot brake is applied and select the required gear.

2. To select sport mode, move the gear selector to the left while in **D**. **SPORT** will be displayed in the message centre.



To use CommandShift™, first select sport mode, then move the selector lever forward to move up a gear, and back to move down gear.

To return to automatic mode move the selector lever back to the **D** position. The **D** on the selector display will illuminate to confirm that automatic mode has been selected.



Park (P) should be engaged and the parking brake applied when the vehicle is stationary.



Always select P and switch off the ignition before leaving the vehicle.



Never select Park (**P**) whilst the vehicle is in motion.



Never select Reverse (**R**) whilst the vehicle is in forward motion.



Never select a forward gear whilst the vehicle is in rearward motion.



Do not rev the engine or allow it to run above normal idle speed, while selecting **D** or **R**, or whilst the vehicle is stationary with any gear selected.



Do not allow the vehicle to remain stationary for any length of time, with a gear selected and the engine running. Always select **P** or **N** if the engine is to idle for a prolonged period.

COMMANDSHIFT™

If CommandShift™ is selected, 1st gear must be used for moving off from stationary.

To return to Sport mode after CommandShift has been selected, move the gear selector lever into the **D** position, then back to Sport mode.

TRANSMISSION COMMANDSHIFT SELECTED

will appear in the message centre when the transmission is in CommandShift mode.

Note: In order to protect the engine, the transmission will automatically change up to prevent over-revving or down if the engine is labouring.

HILL DESCENT

With Hill Descent Control (HDC) selected in either automatic, Sport or CommandShift modes, a low gear will be selected and maintained to provide maximum engine braking. Should the gear lever be moved to **D** from the sport/CommandShift position, the selected gear will be retained until the descent is completed. See **77, HDC OPERATION**.

TRANSMISSION FAULT

In the event that the transmission develops a fault, a warning message may be displayed in the message centre and only limited gears may become available. You should seek qualified assistance immediately.

MANUAL TRANSMISSION



Selection of reverse gear is prevented when the vehicle is travelling in excess of 24 km/h (15 mph). Never attempt to engage reverse gear whilst the vehicle is in forward motion. This may result in serious transmission damage and costly repairs.

GEAR SHIFT INDICATOR



The gear shift indicator illuminates briefly at the recommended gear change point (upshift).

The shift indicator will not illuminate whilst Cruise control is active and not being overridden by pressing the throttle pedal.

Note: This warning indicator is only a guide. It remains the responsibility of the driver to operate the vehicle in an appropriate manner for the prevailing conditions.