

# Load carrying

## GENERAL INFORMATION

### WARNING



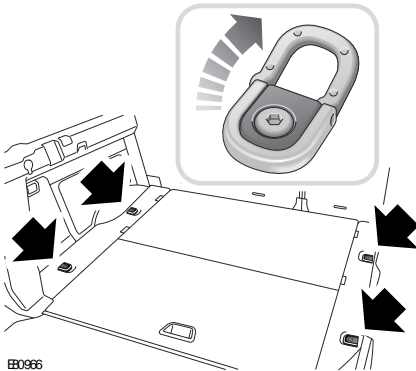
Ensure that any items stored in the vehicle are secure and cannot move. If the vehicle is involved in an accident, or subject to sudden braking or direction change, loose items can cause serious injury or death.

### Weights and load capacities

Information and values for the maximum weights can be found in the Weights section. See **TECHNICAL SPECIFICATIONS** (page 270).

**Note:** *It is the driver's responsibility to ensure that the maximum weights are not exceeded, and that the load is distributed correctly within the vehicle.*

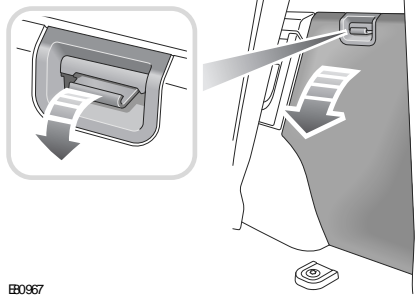
## LUGGAGE ANCHOR POINTS



To assist in safely securing large items of luggage, four fixing points are located in the rear loadspace floor.

**Note:** *A range of approved luggage retention accessories are available from your Land Rover/Authorised Repairer.*

## REAR LOADSPACE HATCHES



There are access hatches on both sides of the rear loadspace.

On 7-seater models the right-hand side hatch gives access to the toolkit and the left-hand hatch gives access to the tow bar.

Ensure that the hatch is securely fitted before driving.