


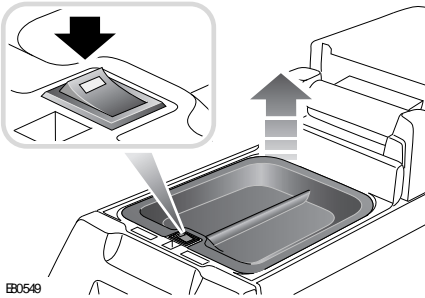
Convenience features

COOL BOX

CAUTION

 The cool box should be switched off when it is not needed to protect the vehicle's battery.

When fitted, the cool box replaces the centre console storage area.



The cool box is switched on/off using the switch on the inside front lip of the cool box. There is a short delay between pressing the switch, and illumination of the indicator.

If the battery voltage is too low to operate the cool box with the engine switched off, the indicator will not illuminate.

Cooling performance is maximised when the cooling tray is used.

Note: *The cool box will continue to operate for a short period after the starter switch is turned to position 0.*