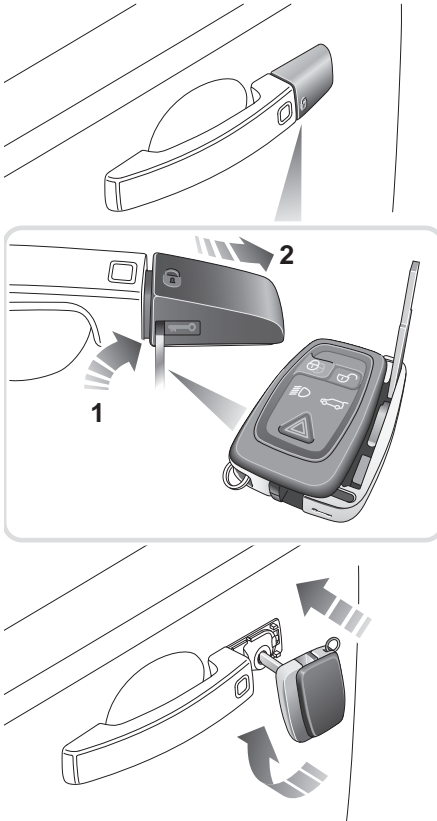


# Locks

## USING THE EMERGENCY KEY BLADE

The emergency key blade will be needed to unlock the vehicle, if the Smart Key has a discharged battery or is damaged. Withdraw the key from the Smart Key for use.

### Locking and unlocking the doors



LAN2246

Remove the front left-hand door lock cover as follows:

1. Insert the emergency key blade into the slot on the underside of the cover.
2. Gently lever the key blade upwards.

3. Carefully twist the key blade, to lever the cover off the retaining clips.

Insert the key blade into the exposed lock to operate.

**Note:** To refit the door lock cover, push it firmly back into place until it clicks into position.

**To unlock:** Turn the key blade towards the rear of the vehicle and release. If the security system is disarmed, all doors and the luggage compartment will be unlocked. If the security system is armed, only the front left-hand door will unlock.

If the vehicle is unlocked using the emergency key blade with the security system armed, the alarm will sound when the door is unlocked. To deactivate the alarm, press the unlock button on the Smart Key or press the engine START/STOP button with the Smart Key inside the vehicle.

**To lock:** Ensure all the doors are closed, then turn the key blade towards the front of the vehicle and release. This will lock all doors but will not arm the alarm.