

Vehicle recovery

TOWING POINTS

WARNING



The towing points at the front and rear of the vehicle are designed for on-road recovery only. If they are used for any other purpose it may result in vehicle damage or serious injury.



Never use towing points to tow a trailer, caravan etc. Doing so may result in vehicle damage or serious injury.

CAUTION



Remove the front towing eye cover before driving off-road. This will prevent damage to or loss of cover.

Off-Road Recovery

WARNING



Before using the towing eyes for off-road recovery, it is essential that off-road driver training covering recovery techniques is undertaken.

Further information on off-road driver training can be found at

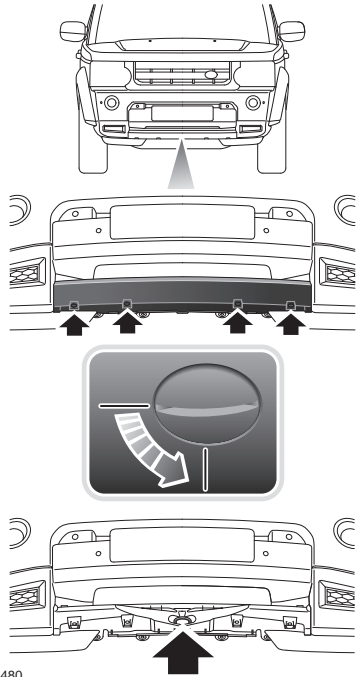
<http://www.landroverexperience.com>

Front towing point

The front towing point can be used to tow your vehicle.

The front towing point is behind a removable cover in the lower front bumper. Before driving off-road, remove the cover as a precaution against accidental loss.

Front towing point cover



LAN2480

1. Rotate each of the fasteners 90 degrees counterclockwise with a coin (or similar).
2. To remove the cover, lower the top edge and then pull the cover forward.
3. Offer up the cover and ensure that the two lugs on the bottom edge engage with the holes in the body panel.
4. To secure the cover, turn each fastener 90 degrees clockwise.

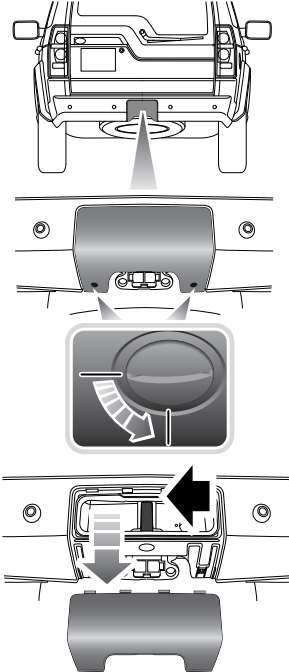
Vehicle recovery

Rear towing point

The rear towing point can be used to tow your vehicle, or another vehicle, in recovery situations.

Before driving off-road, remove the cover as a precaution against accidental loss.

Rear towing point cover



EB0777

1. Rotate each of the fasteners 90 degrees counterclockwise with a coin (or something similar) to release the lower edge.
2. Rotate the cover to release the hooks at the top.
3. Remove the cover.

4. Position the cover and ensure that the four hooks on the top edge engage with the holes in the body panel.
5. To secure the cover, turn each fastener 90 degrees clockwise.