

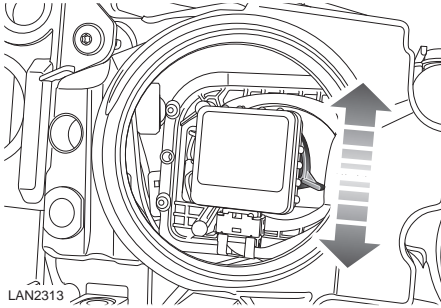
# Lighting

## HEADLAMPS - DRIVING ABROAD

### Headlamp beam adjustment

When travelling in countries which drive on the opposite side of the road, a lever within each headlamp unit can be used to alter the beam pattern.

To access the levers you will need to remove the headlamp units. See **REMOVING A HEADLAMP** (page 83).



LAN2313

**Note:** On LHD vehicles fitted with halogen headlamps, the lever is on the left-hand side of the bulb aperture.

Move the lever to the down position when driving in countries where they drive on the alternative side of the road.

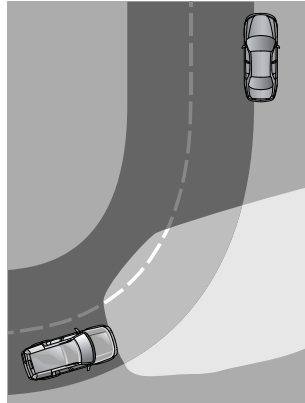
Remember to return the lever to the up position when driving on your usual side of the road.

**Note:** If the auto high beam feature is enabled, you should configure the system for the side of the road you are driving on. See **VEHICLE INFORMATION AND SETTINGS MENU** (page 33).

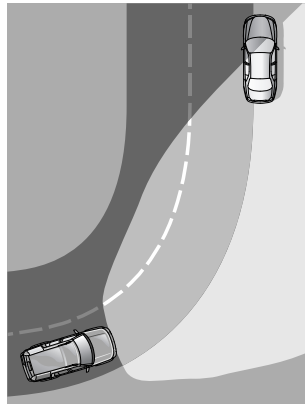
## ADAPTIVE FRONT LIGHTING SYSTEM

The Adaptive Front lighting System (AFS) is a lighting system, designed to give the driver improved visibility. It has two main components: A swivelling headlamp unit and a static bending lamp.

1



2



E80820

1. Light spread of a vehicle not fitted with AFS.
2. Light spread of a vehicle fitted with AFS.

# Lighting

The headlamp units can swivel left or right to improve light spread on bends in the road and they operate throughout the vehicle speed range.

The system takes inputs from the vehicle's road speed and steering angle, to determine the amount of horizontal swivel. The amount of swivel is highest at low manoeuvring speeds and movement reduces as speed increases.

If reverse gear is selected, the headlamp units return to the central position and the unit's swivelling capability is disabled.

## Static bending lamps

Additional lighting is supplied by the static bending lamps which have a beam set to 45 degrees outward from the centre line of the vehicle. These lamps broaden the beam of the headlamps when cornering.

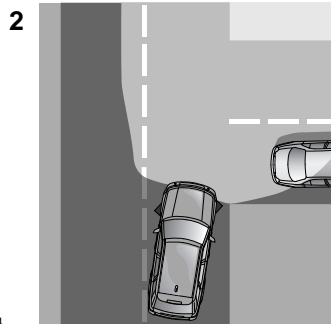
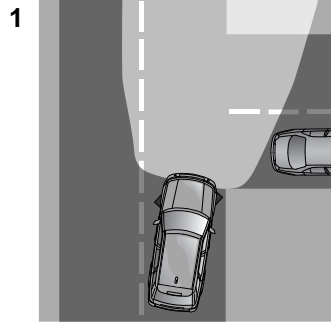
Static bending lights operate whenever the system detects a steering wheel rotation of more than 40 degrees and the vehicle speed is below 70 km/h (44 mph).

## Cornering lamps

These lamps broaden the beam of the headlamps when cornering during normal night driving.

With the ignition switched on and the headlamps operating, the system will switch on the static bending lamp, when it receives an input from the vehicle's direction indicator.

**Note:** Only the lamp on the same side as the operating direction indicator will come on.



E91464

1. Shows the light spread of a vehicle not fitted with cornering lamps.
2. Shows the light spread of a vehicle fitted with cornering lamps.

## Warning indicator



An amber warning indicator will illuminate in the instrument pack if a fault is detected with the AFS. Seek qualified assistance.