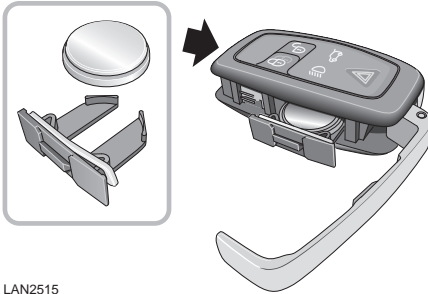


Keys and remote controls

CHANGING THE SMART KEY BATTERY



LAN2515

When the battery needs renewing, there will be a significant decrease in the effective range of the Smart Key transmitter and the message **SMART KEY BATTERY LOW** is displayed in the message centre.

To renew the battery, follow the procedure below:

1. Open the side cover on the Smart Key by pressing and holding the release button.
2. Swing out the arm to expose the battery drawer.
3. Remove the battery drawer and remove the battery.
4. Fit a new battery, type CR2032 (available from your Dealer/Authorised Repairer), with the positive (+) upwards, in the battery drawer. Avoid touching the new battery, as moisture/oil from the fingers can reduce battery life and corrode the contacts.

Refit the parts in the reverse order, ensuring that they click securely into place.

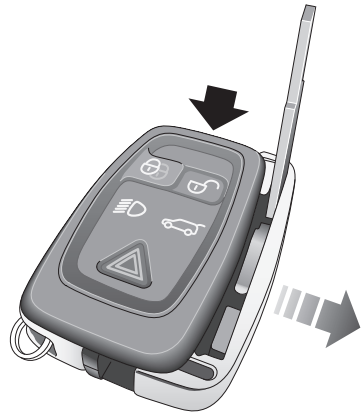
Battery disposal



Used batteries must be disposed of correctly, as they contain a number of harmful substances. Seek advice on disposal from your Dealer/

Authorised Repairer and/or your local authority.

EMERGENCY KEY BLADE



LAN2731

To extract: Press and hold the release button, pull out the key blade compartment to expose the key.

To insert: Position the key in the compartment. Press and hold the release button and push the compartment closed.

The key blade operates the left-hand front door lock, the passenger airbag disabling switch and the child safety locks fitted to the rear doors.