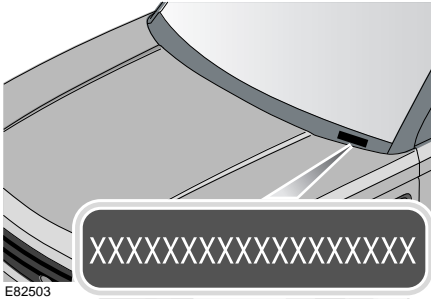


Vehicle identification

VEHICLE IDENTIFICATION NUMBER (VIN)



As a deterrent to thieves and to assist the Police, the VIN is stamped on a plate which is visible through the lowest part of the left side of the windscreen (this should match the VIN recorded in the Service Portfolio book). VIN information may also be found in areas such as: Bonnet locking platform, Suspension tower and Door shut faces.

Note: *If you need to communicate with your Dealer/Authorised Repairer, you may be asked to quote the VIN number.*

VEHICLE IDENTIFICATION PLATE

The Vehicle Identification Number (VIN) and recommended maximum vehicle weights, are stamped on a plate riveted to the lock side of the left-hand (right-hand in China) front door aperture at the bottom. This VIN should match the VIN recorded in the Service Portfolio and the VIN visible through the front windscreen.

VEHICLE BUILD DATE PLATE

(Australia only)

This is the calendar month and year in which the body and power train assemblies were conjoined and the vehicle was driven from the production line.

The vehicle build date is shown on the tyre pressure label to the right-hand 'B' post.

ENGINE NUMBER

Diesel vehicles

The engine number is stamped on the cylinder block on the right-hand side of the engine.

Petrol vehicles

V6 engines: The engine number is stamped on the cylinder block on the right-hand side of the engine.

V8 engines: The engine number is located on the front of the right-hand cam cover. To access the number, it is necessary to remove the engine covers. For further information contact your dealer/authorised repairer.