

Cruise control

PRINCIPLE OF OPERATION

Cruise control enables you to maintain a constant road speed without using the accelerator pedal. This is particularly useful for motorway cruising or for any journey where a constant speed can be maintained for a lengthy periods.

CAUTION

⚠ Do not use cruise control in traffic conditions where a constant speed cannot easily be maintained or on winding or slippery road surfaces.

Note: Cruise control is not available when you are driving in low range gears or if a Terrain Response special program has been selected.

USING CRUISE CONTROL

WARNINGS



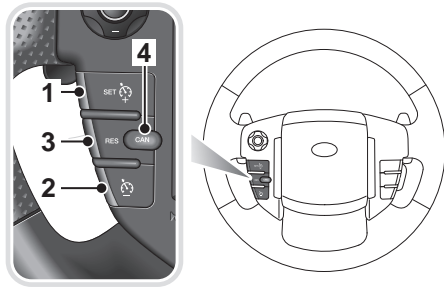
The driver must always ensure that a safe speed is maintained within the speed limit, taking account of traffic and road conditions.

CAUTIONS

⚠ When setting the cruise control to the speed limit it is important to remember that it is possible for the vehicle to increase speed when travelling downhill. This may result in the vehicle speed exceeding the speed limit.

⚠ Do not use cruise control in off-road conditions such as rough tracks or on sand.

⚠ Do not use Sports mode when cruise control is selected.



LAN2183

1. Set or increase the speed
2. Decrease the speed
3. Resume set speed
4. Cancels without erasing the memorised speed

Accelerate until your desired cruising speed is reached. The speed must be above 30 km/h (18 mph). Press button **1** to maintain that speed. The set speed will be displayed in the message centre.



A warning lamp on the instrument pack illuminates when cruise control is operating.

If required, vehicle speed can be increased through normal use of the accelerator, the message **CRUISE OVERRIDE** will be displayed in the message centre. When the accelerator pedal is released, road speed will return to the previously set cruising speed.

Note: If the accelerator pedal is pressed for more than 5 minutes, cruise control will be cancelled.

Cruise control

Suspending cruise control

Cruise control can be suspended temporarily by a single press of button **4**. The warning lamp on the instrument pack turns off and **CRUISE CANCELLED** is displayed in the message centre

Cruise control is also suspended when the brake or clutch pedal is pressed, when the gear selector is moved into neutral, or if HDC or DSC becomes active. To resume cruise control at the previously set speed, press button **3**.

***Note:** The set cruise speed will not be erased by pressing button **4**. The set speed will only be erased when the ignition is switched off.*

Reducing cruising speed

Press and hold button **2**; the set speed displayed in the message centre will decrease and the vehicle will decelerate. Release the button when the desired speed is displayed, this will become the new cruising speed.

Tap button **2** to decrease the cruising speed step-by-step. Each tap will decrease the speed by 2 km/h (1 mph).

Increasing cruising speed

Increase the vehicle's speed by normal use of the accelerator. When the desired speed is reached, press button **1** to reset the cruise control.

Alternatively, press and hold button **1**; the set speed displayed in the message centre will increase and the vehicle will accelerate.

Release the button when the desired speed is displayed, this will become the new cruising speed.

Tap button **1** to increase the cruising speed step-by-step. Each tap will increase the speed by 2 km/h (1 mph).