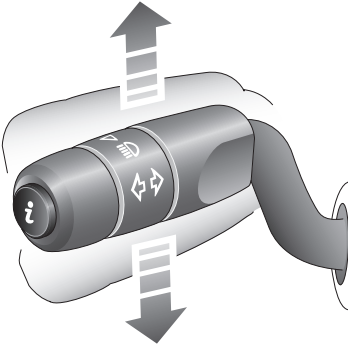


# Lighting

## DIRECTION INDICATORS



LAN2208

With the ignition switched on, move the lever up or down to operate the direction indicators.



A green left or right warning indicator in the instrument pack will flash when the direction indicator lamps are operating.

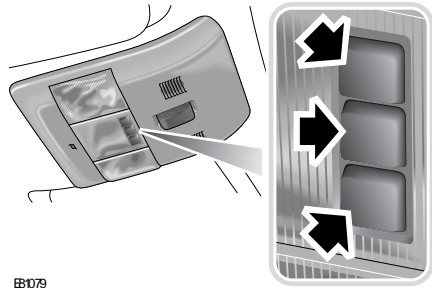
When the lever is held momentarily up or down against spring pressure and then released, the indicators will flash three times to indicate a lane change.



This feature can be enabled or disabled by a Land Rover Dealer/ Authorised Repairer.

## INTERIOR LAMPS

### Front interior lamps



E81079

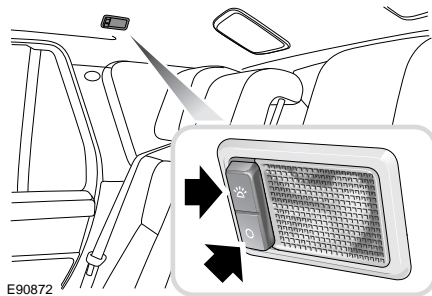
Each lamp can be switched on or off by pressing the switch adjacent to the lamp required.

In automatic mode, the lamps will illuminate automatically when a door is opened.

To enable automatic mode press the centre switch for more than three seconds. The message **INTERIOR LIGHTS AUTOMATIC** will flash in the message centre.

To de-activate the courtesy lamps automatic mode by press the centre switch. The message **INTERIOR LIGHTS OFF** will flash in the message centre.

### Rear interior lamps



E90872

Press the switch on the lamp to operate.