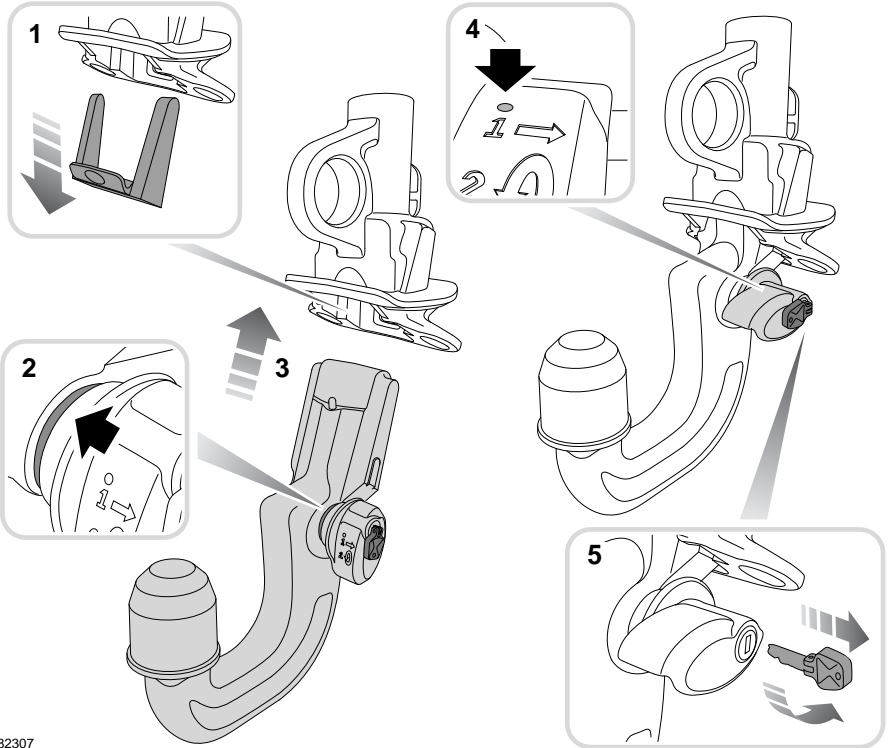


Towing

DETACHABLE TOW BALL

Fitting the tow ball

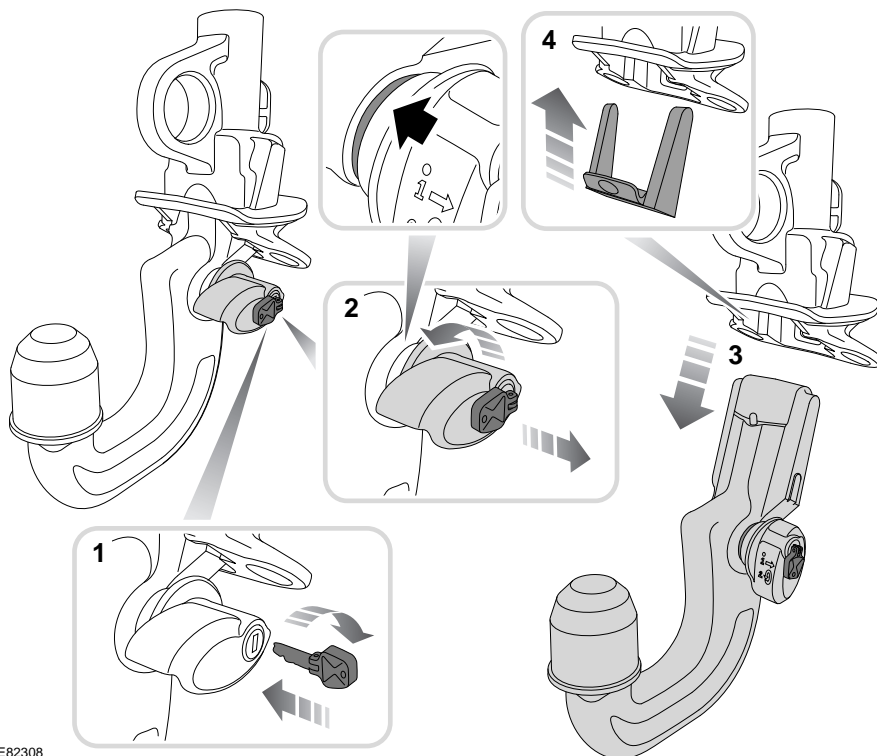


E82307

1. Remove the protective cover from the tow ball mounting and stow it in the tow ball storage area.
2. The tow ball can only be installed when the green locking lever is in the unlocked position.
3. Insert the tow ball into the mounting and push firmly upwards until the tow ball locks into position.
4. The red marker must be completely covered by the green locking lever.
5. Turn the key counterclockwise to lock the tow ball before towing. Remove the key and store in a safe place.

Towing

Removing the tow ball



E82308

1. Insert the key and turn it clockwise to unlock.
2. Pull the handle outwards and rotate counterclockwise until a click is heard. The marker on the handle must show red.
3. Carefully lower the tow ball and place it in its stowage area and fully secure it.
4. Replace the protective towing cover in the tow ball mounting. Press the bottom of the cover to fix it in position.

Note: The key can not be removed when the tow ball has been detached.