

Wheels and tyres

TYRE PRESSURE MONITORING SYSTEM

WARNINGS



The Tyre Pressure Monitoring (TPM system) is not a substitute for manually checking tyre pressures.

The TPM system only provides a low tyre pressure warning and does not re-inflate the tyres.



The TPM system cannot monitor damage to a tyre. Regularly check the condition of your tyres, especially if the vehicle is driven off-road.

CAUTION



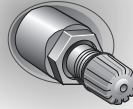
When inflating tyres, care must be taken to avoid bending or damaging the TPM system valves. Always ensure correct alignment of the inflation head to the valve stem.

Note: *Non-approved accessories may interfere with the system.*

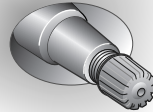
Note: *Different types of tyre may affect the performance of the TPM system. Always replace tyres in accordance with recommendations.*

Your vehicle may be equipped with a TPM system which monitors pressure in each tyre, including the full-size spare tyre. Temporary spare tyres are not fitted with sensors and are not monitored.

1



2



E82445

Wheels fitted with a TPM system can be identified by the appearance of the external metal lock nut and valve **1**. All Land Rover non-TPM system wheels have a rubber valve fitted **2**.

TPM system operation

The TPM system monitors the pressure of the tyres via sensors located in each wheel and a receiver located within the vehicle. Communication between sensor and receiver is via Radio Frequency (RF) signals.

Check each tyre regularly when cold, including the spare. If necessary, inflate tyres to the recommended pressure.



The tyre pressure warning indicator illuminates when one or more of your tyres is significantly under-inflated. You should stop and check your tyres as soon as possible, and inflate them to the recommended pressure for the vehicle loading condition.

Wheels and tyres

If low pressure warnings occur frequently, the cause must be found and rectified. Driving on an under-inflated tyre can cause the tyre to overheat and lead to tyre failure. Under-inflation reduces fuel efficiency and tyre tread life, and may also affect the vehicle's handling and stopping ability.

The TPM system also monitors the full size spare tyre pressure. If the pressure for the spare tyre is incorrect, the message **CHECK SPARE TYRE PRESSURE** is displayed, accompanied by illumination of the warning lamp.

Note: The TPM system warnings may be intermittent under variable climatic conditions.

Vehicle loading

It is possible to select different tyre pressure monitoring levels that correspond to the pressures on the tyre pressure label for a lightly laden or heavily laden vehicle.

The different tyre pressure monitoring levels can be set via the **Vehicle Set-up** menu. See **VEHICLE INFORMATION AND SETTINGS MENU** (page 33).

If the vehicle is to be used heavily-laden or for towing, the tyre pressures must be increased to cope with the additional load. Increase the tyre pressures and then change the menu setting to put the TPM system into heavy load mode. The message **TYRE PRESSURE MONITORING SET FOR HEAVY LOAD** will be displayed in the message centre to confirm the change.

When the vehicle load is returned to normal and the tyre pressures are reset, change the menu setting to put the TPM system back into light load mode. The message **TYRE PRESSURE MONITORING SET FOR LIGHT LOAD** will be displayed in the message centre.

TPM system fault

A TPM system fault is indicated by the illumination of the warning indicator and the message **TYRE PRESSURE MONITORING SYSTEM FAULT** being displayed. The warning indicator will initially flash before illuminating continuously. This sequence will occur every time the vehicle is started until the fault is rectified. When a fault occurs, the system may not be able to detect or signal low tyre pressure as intended.

TPM system faults may occur for a variety of other reasons, including: other radio frequency systems causing interference or the installation of incompatible replacement tyres on the vehicle.

Spare tyre pressure

The full size spare tyre must always be inflated to the highest pressure for the specified tyre size.

Full size spare wheel and tyre change

The system will automatically recognise any changes in wheel positions. The vehicle must be stationary for 15 minutes during the wheel and tyre change, to ensure that the system can detect the change. After driving above 25 km/h (18 mph) any deflation warning should clear within a few minutes.

Temporary spare wheel and tyre change

If the temporary spare wheel is fitted, the system will automatically recognise the change in wheel positions. After approximately ten minutes of driving above 18 mph (25 km/h), the message **FRONT (REAR) RIGHT(LEFT) TYRE PRESSURE NOT MONITORED** will be displayed, accompanied by illumination of the warning lamp.

Wheels and tyres


The warning lamp will first flash and then illuminate continuously. Extended use of the temporary spare wheel, will trigger the message **TYRE PRESSURE MONITORING SYSTEM FAULT**.

This TPM system display sequence will be activated at every ignition cycle until the temporary spare wheel is replaced by a full-size road wheel.

Note: *If in use, always replace the temporary spare wheel before having a TPM system fault investigated.*

If a tyre needs to be changed

CAUTION

 Damage to the vehicle may result if the following precautions are not taken:

The valve stem seal, washer, nut, valve core and cap should be replaced at every tyre change.

The valve stem seal, washer and nut must be replaced if the valve retention nut is loosened.

Sensor units and nuts must be refitted using correct torque figures and associated profile.

Sensors can be removed from the wheel by unscrewing the valve retention nut.

Always have your tyres serviced by a dealer or qualified technician. If a TPM system is fitted, each wheel and tyre assembly, with the exception of a temporary spare, is equipped with a tyre pressure sensor connected to the tyre valve stem.

Avoid contact between the bead of the tyre and the sensor during removal and refitting of the tyre, otherwise the sensor may become damaged and/or inoperable.

Replacement sensor fitment procedure

Sensor replacement should be carried out by a Land Rover Dealer/Authorised Repairer.

A replacement sensor must be fitted to a running wheel in order to be recognised by the TPM system. Recognition only occurs when the vehicle is driven above 25 km/h (18 mph) for at least ten minutes.

Should the TPM system warning for any wheel not clear, even after ensuring correct inflation and driving for more than ten minutes above 25 km/h (18 mph), consult your Land Rover Dealer/Authorised Repair.

Wheels and tyres

Messages

The following table lists the TPM-related messages that may be displayed in the message centre. Market criteria mean that some messages will not apply to your vehicle and will therefore not appear.

Message	Meaning	What to do?
FRONT (REAR) LEFT (RIGHT) LOW CHECK ALL TYRE PRESSURES	The indicated tyre is significantly under-inflated.	Check tyre pressure as soon possible and inflate to recommended pressure.
CHECK ALL TYRE PRESSURES	One or more tyres is significantly under-inflated.	Check all tyre pressures as soon as possible and inflate to recommended pressure.
CHECK SPARE TYRE PRESSURE	Spare tyre is significantly under-inflated.	Check pressure of spare tyre and inflate to recommended pressure.
FRONT (REAR) LEFT (RIGHT) TYRE NOT MONITORED	You have a temporary spare wheel fitted at the indicated position.	Limit your vehicle speed to 80 km/h (50 mph) until the temporary spare can be replaced with the full size road wheel and correctly inflated tyre.
	A signal from the sensor at the indicated position is not being received.	Contact your Land Rover Dealer/Authorised Repair as soon as possible.
TYRE PRESSURE MONITORING SYSTEM FAULT	TPM system fault has occurred.	Check all tyre pressures and then contact your Land Rover Dealer/Authorised Repair as soon as possible.
TYRE PRESSURE MONITORING SET FOR HEAVY LOAD	Indicates the system is set to monitor the tyre pressures for a heavily-laden condition.	Ensure setting is correct for the current tyre pressures and loading conditions.
TYRE PRESSURE MONITORING SET FOR LIGHT LOAD	Indicates the system is set to monitor the tyre pressures for lightly-laden conditions.	Ensure setting is correct for the current tyre pressures and loading conditions.