




# Supplementary restraints system


## DISABLING THE PASSENGER AIRBAG

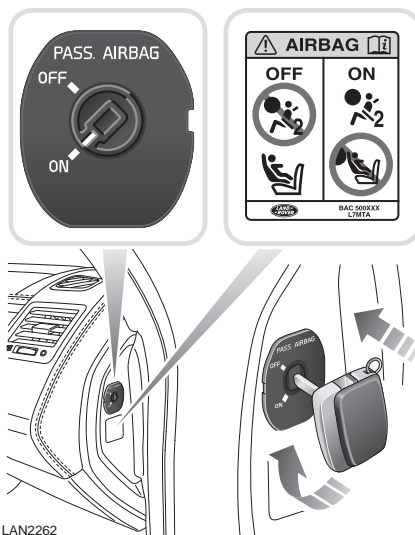
### WARNING

 Crash test data and statistics show that the safest place for a child to be restrained is in a child seat correctly fitted to the vehicle's rear seat.

 Do not use a child restraint on a seat protected by an operational airbag in front of it. Doing so presents a high risk of death or serious injury to the child in the event of an accident.

 Do not fit a child restraint to the front passenger seat if the SRS warning lamp illuminates continuously with the ignition on.

 As soon as a child seat is removed from the front passenger seat the airbag must be turned on. Failure to do so will put a front seat passenger at greater risk of death or serious injury in the event of a frontal impact.



**Note:** The passenger airbag should be disabled only when a rearward facing child restraint is fitted to the front passenger seat.

Prior to fitting a child restraint on the front passenger seat, open the passenger door and using the starter key, turn the airbag disabling switch to the **OFF** position.

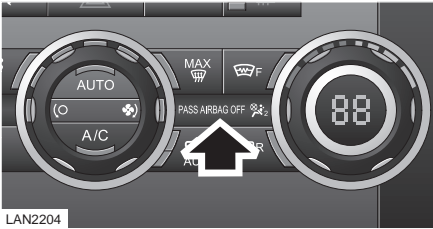
# Supplementary restraints system

## Passenger airbag status indicator

### WARNING



When checking the operational status of the front passenger airbag, ensure that the ignition is switched on.



LAN2204

When the airbag disabling switch is turned to the **OFF** position, the passenger airbag status indicator (arrowed) will illuminate (yellow) whenever the ignition is switched on.

When switching the passenger airbag on or off, check that the status lamp shows the correct condition.

**Note:** The indicator will only illuminate when the ignition is turned on or the engine is running.

## Airbag switched OFF

### WARNING



To avoid the risk of injury, never use a child restraint in the front of the vehicle unless the passenger airbag has been switched OFF.



E82245

In order to fit a child restraint to the front passenger seat, use the emergency key to turn the passenger airbag disabling switch to the **OFF** position.

Check that when the ignition is switched on, the status indicator on the fascia is illuminated confirming that the passenger airbag is not operational.

If the airbag SRS warning indicator in the instrument pack illuminates continuously, remove the child restraint from the front seat and consult your Land Rover Dealer/ Authorised Repairer.