

Lighting

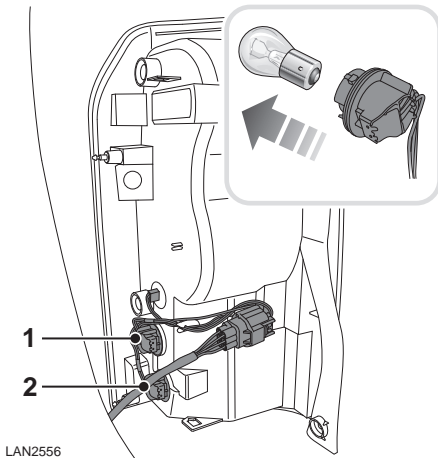
REAR LAMP BULBS

Note: The direction indicator lamp, stop lamp and tail lamp within the rear lamp units are LED and are non-serviceable.

To change a bulb within the rear lamp unit it is necessary to completely remove the unit from the vehicle. See **REMOVING A REAR LAMP** (page 85).

Rear lamp bulb

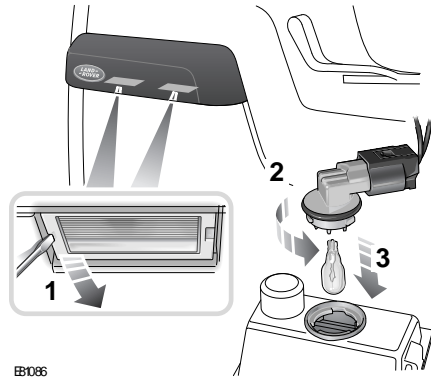
After the rear lamp unit has been removed, each bulb is accessible by twisting off its electrical connection cap.



LAN2556

1. Reversing lamp
2. Rear fog lamp

Licence plate lamp bulb



BB1066

Follow the steps illustrated. Insert a new bulb and refit the components.