

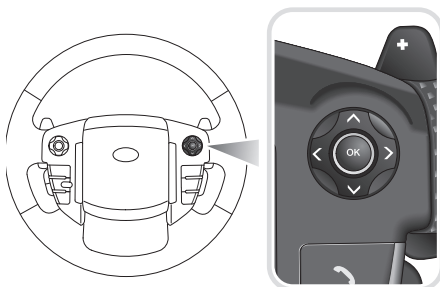
Driver information module

VEHICLE INFORMATION AND SETTINGS MENU



LAN2260

You can configure a number of vehicle features and display settings to suit your personal requirements via the vehicle information and settings menu.



LAN2202

To display the menu on the message centre, operate the menu control on the steering wheel.

Navigating the menu

Menu selections are made using the menu control to highlight the required menu option. Once the required option has been highlighted press the **OK** button to select that option.

The screen will then display a sub-menu, or activate the selected item where applicable.

Scroll arrows to the left of the menu indicate that there are further menu items either above or below the currently viewed menu items.

Note: If the arrow is displayed brightly there are additional menu items available. If the arrow appears dim, then there are no additional items.

Closing the menu

To close the main menu press the left button on the menu control. To close sub-menus press and hold the left button on the menu control.

The menu will close automatically if:

- no action is taken with the main menu within 10 seconds
- action is taken with the main menu and it is then left for 4 minutes

Note: If a further action is taken within the four minute period, the timer will reset and a further four minutes will elapse before the menu closes automatically.

Driver information module

Overview of menu

The following is an overview of the information and settings menu and what each option does.

Close Menu	-	Close the vehicle settings and information menu.
Show Warnings	-	Display all active warning messages.
Vehicle Set-up	Speed Warning	Enable/disable over speed warning and set the monitored speed.
	High Beam Assist	Enable/disable the operation of the automatic headlamp high beam feature. Configure system for driving on the alternate side of road. <i>Note: Headlamps still need to manually adjusted. See HEADLAMPS - DRIVING ABROAD (page 80).</i>
	Alarm Sensors	This setting allows you to temporarily disable the vehicle's interior space protection and tilt sensor the next time the vehicle is locked with Smart Key. This setting is automatically enabled when the vehicle is unlocked with the Smart Key.
	Reverse-dip Mirror	Enable/disable automatic dipping of exterior mirrors when reverse gear is selected.
	Drive-away Locking	Enable/disable automatic locking off the doors when the vehicle speed exceeds 8 km/h (5 mph).
	2-Stage Unlocking	Enable/disable the single-point entry door unlocking feature.
	Headlamp Delay	Enable/disable the headlamp delay feature. Configure the amount of time the headlamps will remain on: 30, 60, 120 or 240 seconds.
	TPM Load Setting	Change the monitored tyre pressures for the vehicle loading conditions: Heavy Load Light Load
	Trip Computer	Trip A
Trip B		Enable/disable display of Trip B readings
Trip Auto		Enable/disable display of Trip Auto readings
Units		Select the units to be displayed by the trip computer: Miles, MPH, MPG Miles, MPH, MPL Km, km/h, l/100 km

Driver information module

Display Settings	Language	Select the language for text displayed in the message centre.
	Temperature	Select the units for the external temperature reading: Celsius Fahrenheit
Service Menu	VIN Display	Displays the Vehicle Identification Number.
	Oil Level Display	Displays the oil level display.
	HBA Sensitivity	Change sensitivity of High Beam Assist system: Normal Mode Alternate Mode