







IMPORTANT INFORMATION

-  Do not rest your foot on the brake pedal whilst the vehicle is in motion.
-  Never allow the vehicle to coast (freewheel) with the engine turned off. The engine must be running to provide full braking assistance. The brakes will still function with the engine off, but far more pressure will be required to operate them.
-  If the red brake warning lamp illuminates, safely bring the vehicle to a stop, as quickly as possible. Seek qualified assistance before proceeding.
-  Never place non-approved floor matting or any other obstructions under the brake pedal. This restricts pedal travel and braking efficiency.

Driving through heavy rain or water can have an adverse effect on braking efficiency. Under such circumstances, it is recommended that you lightly apply the brakes intermittently to dry the brakes.

BRAKE WARNING LAMPS

 If this red warning lamp illuminates while driving and/or the message **LOW BRAKE FLUID** is displayed in the message centre, check the brake fluid level at the earliest opportunity and top-up as required.

 If this amber warning lamp illuminates while driving and/or **ABS FAULT** is displayed in the message centre, drive with extra caution, avoid heavy braking where possible, and seek qualified assistance as soon as possible.

ELECTRONIC BRAKE FORCE DISTRIBUTION (EBD)

EBD balances the distribution of braking forces between the wheels on the front and rear axles, to maintain maximum braking under all vehicle loading conditions.

For example; Under light loads, EBD applies less braking effort to the rear wheels, to maintain stability. Conversely, it allows full braking effort to the rear wheels when the vehicle is heavily laden.

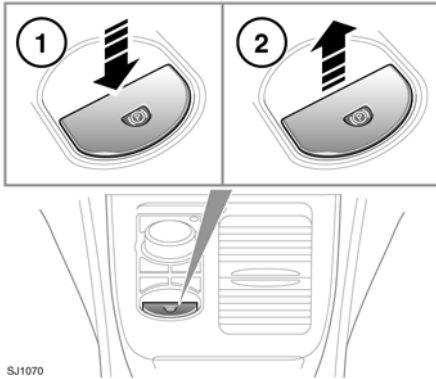
A fault with the EBD system is indicated by the red brake warning lamp and the message **EBD FAULT**. The braking system will still operate, but without EBD assistance. Seek qualified assistance to have the fault rectified.

EMERGENCY BRAKE ASSIST (EBA)

The EBA system measures the rate at which the brake pressure increases. If the system detects an emergency braking situation, EBA automatically initiates full braking effect. This can reduce stopping distances in critical situations.

A fault with the EBA system is indicated by the brake warning lamp illuminating and **Emergency Brake Assist Not Available** displaying in the message centre. The braking system will still function, but without EBA assistance. Seek qualified assistance to have the fault rectified.

ELECTRIC PARKING BRAKE (EPB)



SJ1070

The switch which operates the parking brake is mounted on the centre console to the rear of the gear selector.

To disengage the parking brake (1): With the ignition system on or with the engine running, apply the foot brake and press the parking brake switch down.

If the parking brake is applied while the vehicle is stationary and **D** or **R** is selected, applying the throttle will automatically release the parking brake.

The parking brake is also automatically released when the gear selector is moved from the **P** position.

If the parking brake is inadvertently applied when the vehicle is moving at above 3 km/h (1.8 mph), **Caution! Park Brake Applied** is displayed in the message centre, the warning indicator in the instrument panel will illuminate and a warning chime will sound.

If the parking brake is applied whilst the vehicle is moving, releasing the switch will disengage the parking brake. The parking brake cannot be applied when the vehicle is moving, if the accelerator pedal is pressed.

Note: If the vehicle is in motion, the parking brake should only be used as an emergency brake.

! Always apply the parking brake when the vehicle is parked.

To engage the parking brake (2): Pull the parking brake switch upwards and release. The switch will return to the neutral position.

(P) The Parking brake warning lamp on the instrument panel will illuminate.

The Drive Away Release feature allows the parking brake to release automatically as the vehicle is driven away.

The warning lamp in the instrument panel will remain on for a short time, if the parking brake is applied when the ignition system is reverted to the convenience mode.

If a fault in the system is detected, **Park Brake Fault** or **Cannot Apply Park Brake** will be displayed in the message centre. Seek qualified assistance as soon as possible.

If the battery has been discharged or disconnected, **Apply Foot And Park Brake** will be displayed in the message centre when the ignition is next switched on. Depress the foot brake and pull the parking brake switch up to apply the parking brake. This is required to reset the parking brake system. The parking brake will now function correctly.