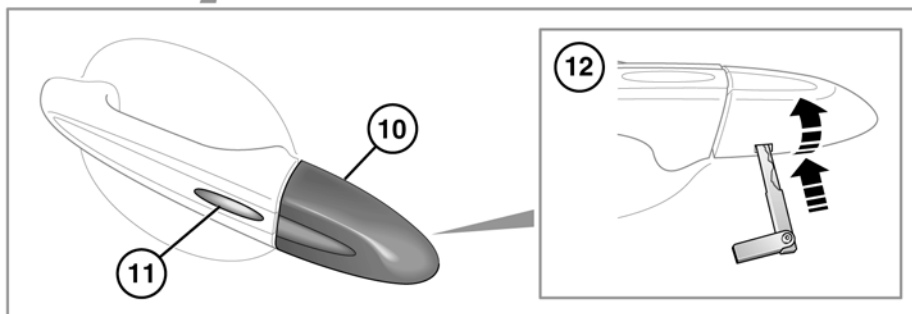
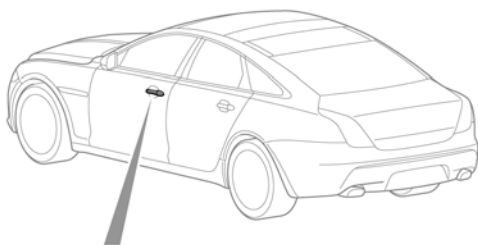
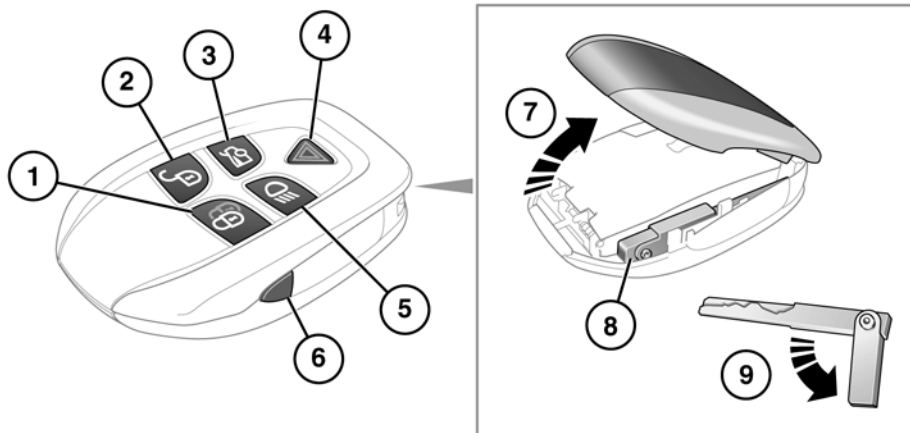


Entering the vehicle

UNLOCKING THE VEHICLE



SJ1002

1. Press the lock button to secure the vehicle. The vehicle can be Single or Double locked. See **9, SINGLE LOCKING** and **9, DOUBLE LOCKING**.

2. Your vehicle can be unlocked using either Single or Multi-point entry.

When single point entry is enabled, the first press unlocks the driver's door and enables the other doors to be opened from the inside. The hazard warning lamps will flash twice to indicate that the vehicle is unlocked and the alarm has been disarmed. A second press unlocks the passenger doors and the luggage compartment.

If multi-point entry is enabled, press briefly to unlock all the doors and luggage compartment and to disarm the alarm. The hazard warning lamps will flash twice to indicate that the vehicle is unlocked and the alarm has been disarmed.

To change from Single to Multi-point entry (or vice versa), press both the lock and unlock buttons simultaneously for three seconds. The hazard warning lamps will flash twice to confirm the change.

The change can also be achieved using the instrument panel menu.

3. Press to open the luggage compartment. The vehicle security system will remain active for the period the luggage compartment is open but the intrusion and inclination sensing systems will be inhibited. Door and bonnet security will remain active.

The security system will re-arm to its previous state when the luggage compartment is closed.

4. Panic alarm. Press and hold for three seconds, or press three times within three seconds, to activate the horn, siren and hazard lamps.

After five seconds, the alarm can be cancelled by pressing the panic alarm button for three seconds or by pressing the button three times within three seconds.

The emergency alarm will also be cancelled if the vehicle detects a valid Jaguar Smart Key when the START/STOP button is pressed.

5. Press to switch on the approach illumination for up to 120 seconds. The illumination time is set using the exit delay switch. Pressing the button again or operating the starter button will turn the approach lamps off.
6. Emergency key blade release button.
7. Press and hold the release button while lifting the emergency key blade cover from the Jaguar Smart Key body.
8. Extract the emergency key blade.
9. Unfold the emergency key blade.
10. Door lock cover.
11. Keyless locking button. See **10, KEYLESS LOCKING**.
12. Insert the emergency key blade into the slot at the base of the door lock cover. Lift slightly to prise away the lock cover and expose the emergency lock.

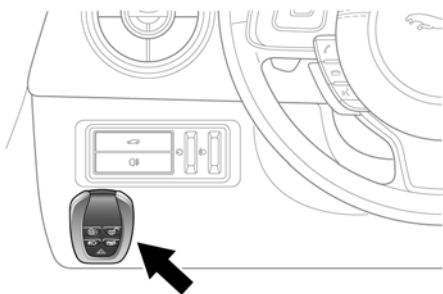
Insert the key blade into the exposed lock to operate.

To lock: Ensure all the doors are closed, then turn the key blade towards the front of the vehicle and release. This will lock all doors but will not arm the alarm.

Entering the vehicle

To unlock: Turn the key blade towards the rear of the vehicle and release. If the security system is disarmed, all doors and the luggage compartment will be unlocked. If the security system is armed, only the front left-hand door will unlock.

If the vehicle is unlocked using the emergency key blade with the security system armed, the alarm will sound when a door is unlocked. To deactivate the alarm, press the unlock button on the Jaguar Smart Key or press the engine START/STOP button with the Smart Key inside the vehicle.



SJ1281

If the Smart Key fails to operate, **Smart Key Not Found- Refer to Handbook** is displayed in the message centre. Whilst the warning is displayed, hold the smart key close to the auxiliary switch pack in the position shown.

Replacing the door lock cover:

1. Align the cover to engage the bottom two clips.
2. Push the top of the cover to engage the upper clip.

SMART KEY SYSTEM TRANSMITTERS



Any person fitted with an implanted medical device should ensure that the device is kept at a distance of at least 22 cm (8.7 inches) away from any transmitter mounted in the vehicle. This is to avoid any possibility of interference between the system and device.

For information concerning the locations of the security system transmitters, see 166, JAGUAR SMART KEY SYSTEM TRANSMITTERS.

KEYLESS ENTRY

Keyless entry allows the vehicle to be unlocked and disarmed by simply operating the door handle, provided the Jaguar Smart Key is within 1.0 m (3 feet).

The Smart Key needs only to be on the driver's person; it does not need to be exposed or handled. However, the Smart Key may not be detected if it is placed within a metallic container.

Note: *Keyless entry will unlock the vehicle in accordance with the current security setting (Single-point or Multi-point entry). However, if Single-point entry is the current setting and a door other than the driver's door is opened first, all doors will unlock.*

When all open doors have been closed, the system will search the vehicle interior for a valid Smart Key. If one is not detected, **Smart Key Not Found Place As Shown** will be displayed in the message centre. Find the Smart Key and place it against the fascia, below the auxiliary switch pack, as shown previously.

The security system fitted to your vehicle is Thatcham category 1 approved, and meets EU regulations 97/116 and EU directive 95/56 EC.

GLOBAL OPENING

Press and hold the unlock button for three seconds. The vehicle will unlock and the alarm will be disarmed immediately. After three seconds, all of the windows will open. This feature can be enabled/disabled via the instrument panel menu.

To stop the windows from opening/closing during the global opening/closing operation, press any of the buttons on the Jaguar Smart Key or operate the driver's window switch. To stop a particular window from opening, operate the relevant window switch.

DRIVE-AWAY LOCKING

Locks all the doors when the vehicle exceeds 8 km/h (5 mph). Use of the central locking/unlocking buttons (see item 28, **212, CONTROLS**) will override the drive-away locking feature for the rest of a journey.

If a door is individually unlocked and opened, all doors will relock when the open door is subsequently closed.

Note: Drive-away locking can be enabled/disabled via the Vehicle Set-up area of the instrument panel menu.

CONVENIENCE MODE

When the door is opened using either the Jaguar Smart Key or keyless entry, the vehicle's electrical system initiates the convenience mode. The following systems become functional:

- Driver position memory.
- Seat and steering column adjustment.
- Interior and exterior lighting.

- Message centre.
- Auxiliary power socket.

JAGUAR SMART KEY CARE



To prevent accidental operation, which may result in an injury, never leave the Jaguar Smart Key in the vehicle if children or animals are also left in the vehicle.

Do not expose to extremes of heat, dust, humidity or allow contact with fluids. Do not leave the transmitter exposed to direct sunlight.

The emergency key blade number is recorded on an attached label. Peel off the label and attach it to the designated area on the Security Card, supplied in the literature pack. Keep the Security Card safe, but not in the vehicle.

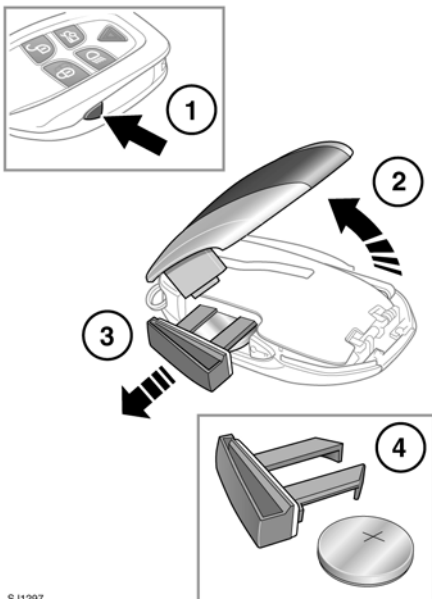
The operational range of the Jaguar Smart Key will vary considerably depending on atmospheric conditions and interference from other transmitting devices.

Note: The radio frequency used by the Smart Key may be used by other devices (e.g. medical equipment). This may prevent the Smart Key from operating correctly.

Entering the vehicle

JAGUAR SMART KEY BATTERY REPLACEMENT

When the battery needs renewing, there will be a significant decrease in the effective range and the message **SMART KEY BATTERY LOW** is displayed in the message centre.



SJ1297

To replace the battery:

1. Press the release button on the side of the Jaguar Smart Key.
2. Open the Smart Key cover.
3. Remove the battery drawer.
4. Remove the battery.

Fit a new CR2032 type battery (available from your Dealer/Authorised Repairer), with the positive (+) side upwards.

Replace the battery drawer and close the Jaguar Smart Key.



Battery disposal: Used batteries must be disposed of correctly, as they contain harmful substances.

Seek advice on disposal from your Dealer and/or your local authority.