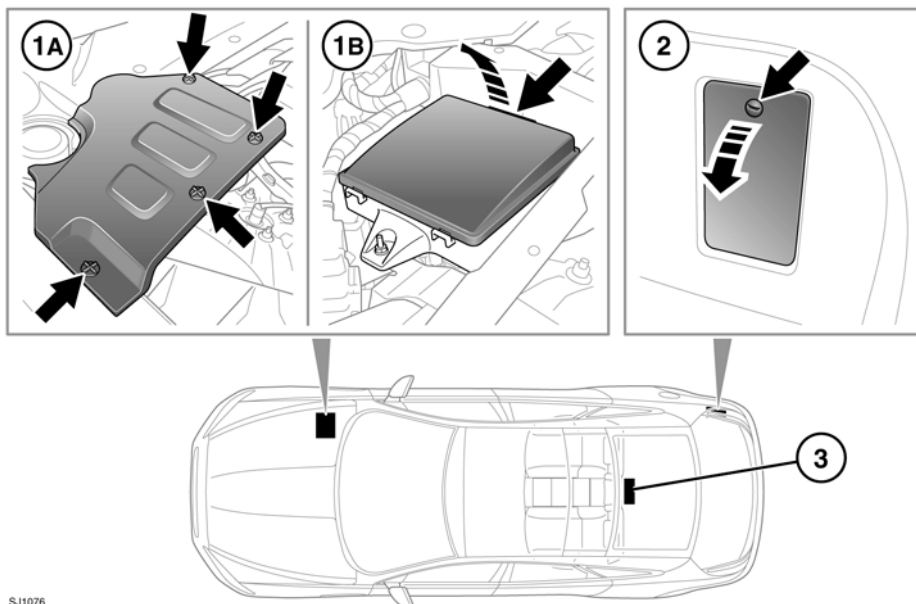


## FUSE BOX LOCATIONS



SJ1076

- ⚠ When a fuse box lid is removed, take care to protect the box from moisture, and refit the lid at the earliest opportunity.

There are three separate fuse boxes fitted to the vehicle, each one containing fuses protecting a different group of circuits.

1. The engine compartment fuse box.
  - A. Remove engine cover.
  - B. Remove fuse box cover.
2. The luggage compartment fuse box.
3. The passenger compartment fuse box.

**Note:** Accessing the passenger compartment fuse box requires removal of the rear seat. This should only be carried out by qualified personnel.

## CHANGING A FUSE

- ⚠ Always turn off the ignition system and the affected electrical circuit, before replacing a fuse.
- ⚠ Fit Jaguar approved replacement fuses of the same rating and type, or fuses of matching specification.
- ⚠ If the replacement fuse blows after installation, the system should be checked by your Dealer/Authorised Repairer.

**Note:** Jaguar recommend that owners do not remove or replace relays. It is recommended that you seek qualified assistance in the event of a relay failure.

Spare ATO fuses are located in the tool tray situated under the floor in the luggage compartment.

## ENGINE COMPARTMENT FUSE BOX

Fuse No	Rating (amps)	Fuse Colour	Circuit
F1	-	-	-
F2	15A	Blue	Ignition coils (petrol) or ECM (Diesel)
F3	5A	Tan	CDCS ECU, EPB, EMS, ECM (Petrol)
F4	30A	Green	Power wash pump.
F5	-	-	-
F6	5A	Tan	AC Clutch compressor (Diesel)
F7	40A	Orange	RH front screen heater.
F8	10A	Red	GPC, UHEGO, MAFA (Diesel)
F9	5A	Tan	EBF, ECFC, EOTL, Engine cooling fan, PCM cooling fan (Diesel)
F10	-	-	-
F11	-	-	-
F12	5A	Tan	ESOV, CRV, EGR CBV, TSOV, MAFB (Diesel)
F13	5A	Tan	AEM, WIF (Diesel)
F14	5A	Tan	PCV, MEU, Fuel pump relay control (Diesel)
F15	-	-	-
F16	-	-	-
F17	15A	Blue	TCM, ETS.
F18	20A	Yellow	EMS main, EMS secondary control (petrol).
F19	30A	Green	Starter.
F20	40A	Orange	DSC pump.
F21	25A	Clear	ABS slip valves.
F22	-	-	-
F23	-	-	-
F24	15A	Blue	Intercooler water pump (petrol).
F25	15A	Blue	Horns.
F26	40A	Orange	Wiper motor.
F27	-	-	-
F28	15A	Blue	ECM, VVT diode (petrol).
F29	5A	Tan	Oil quality, MAFS, DHTL (petrol).
F30	10A	Red	Throttle motor (petrol).

Fuse No	Rating (amps)	Fuse Colour	Circuit
F31	10A	Red	Radiator fan, ECM cooling fan, purge valve, CPS valves, IMTV (petrol).
F32	40A	Orange	Front screen heater.
F33	20A	Yellow	UHEGO bank A heaters (petrol).
F34	20A	Yellow	UHEGO bank B heaters (petrol).
F35	100A	Black	Engine cooling fan.

## PASSENGER COMPARTMENT FUSE BOX

Fuse No	Rating (amps)	Fuse Colour	Circuit
F1	5A	Tan	RF-RX, IMS, TPM system.
F2	-	-	-
F3	-	-	-
F4	-	-	-
F5	5A	Tan	DSC module, Yaw rate, SAS.
F6	5A	Tan	ACC.
F7	20A	Yellow	Rear climate control.
F8	30A	Green	Front passenger's seat adjustment.
F9	5A	Tan	EPB.
F10	5A	Tan	Air suspension ECM.
F11	-	-	-
F12	-	-	-
F13	-	-	-
F14	5A	Tan	Brake pedal switch.
F15	30A	Green	Heated rear screen.
F16	-	-	-
F17	5A	Tan	KVM supply.
F18	5A	Tan	Fuel pump relay.
F19	5A	Tan	ECM.
F20	10A	Red	Heated steering wheel.

# Fuses

Fuse No	Rating (amps)	Fuse Colour	Circuit
F21	5A	Tan	AC sensor, Front overhead console, Front dual climate control module and smog sensor.
F22	5A	Tan	TCM, E-Diff, Jaguar Drive selector.
F23	5A	Tan	Headlamp levelling.
F24	5A	Tan	RH front and rear lamp clusters.
F25	10A	Red	LH front and rear lamp clusters.
F26	-	-	-
F27	-	-	-
F28	20A	Yellow	Rear seat dual climate control module.
F29	20A	Yellow	Front seat dual climate control module.
F30	25A	Clear	Passenger door module.
F31	5A	Tan	Rain/light sensor.
F32	25A	Clear	Driver's door module.
F33	20A	Yellow	Front dual climate control module.
F34	10A	Red	Fuel filler flap lock.
F35	-	-	-
F36	5A	Tan	Battery back up sounder/tilt sensor.
F37	20A	Yellow	KVM.
F38	15A	Blue	Front screen wash pump relay.
F39	25A	Clear	LH rear door module.
F40	5A	Tan	Driver's window, Clock, ICP, Rear climate panel, passenger door memory.
F41	5A	Tan	Power amp.
F42	30A	Green	Driver's seat module.
F43	-	-	-
F44	25A	Clear	RH rear door module.
F45	30A	Green	Passenger front seat switch pack.
F46	30A	Green	Driver's seat module.
F47	-	-	-
F48	-	-	-
F49	5A	Tan	RH headlamp motor.
F50	5A	Tan	LH headlamp motor.

Fuse No	Rating (amps)	Fuse Colour	Circuit
F51	5A	Tan	Steering wheel switches.
F52	20A	Yellow	Front cigar lighter.
F53	20A	Yellow	Rear cigar lighter.
F54	-	-	-
F55	20A	Yellow	Rear accessory socket.
F56	10A	Red	RCM/OCS.
F57	10A	Red	Glove box, glove box lamp, front and rear overhead consoles, sun visor lamps, vanity lamps.
F58	-	-	-
F59	-	-	-
F60	-	-	-
F61	10A	Red	IAU, cluster, cluster fan.
F62	10A	Red	Climate control module.
F63	20A	Yellow	Front accessory socket.
F64	15A	Blue	IAM (head unit).
F65	-	-	-
F66	5A	Tan	OBD 2.
F67	-	-	-
F68	10A	Red	DAB, TVM.
F69	15A	Blue	HLDF.

## LUGGAGE COMPARTMENT FUSE BOX

Fuse No	Rating (amps)	Fuse Colour	Circuit
F1	40A	Orange	LH seat belt retract module.
F2	15A	Blue	CVD ECU, ACC.
F3	5A	Tan	PAM, RH blind spot monitor, rear view mirror.
F4	10A	Red	Chassis control module.
F5	20A	Yellow	Air suspension.
F6	30A	Green	Electronic parking brake (EPB).

# Fuses

Fuse No	Rating (amps)	Fuse Colour	Circuit
F7	40A	Orange	RH seat belt retractor module.
F8	30A	Green	Fuel pump.
F9	40A	Orange	Power amp.
F10	-	-	-
F11	-	-	-
F12	-	-	-
F13	5A	Tan	Air suspension.
F14	40A	Orange	AC Blower.
F15	10A	Red	Passenger seat switch pack.
F16	-	-	-
F17	20A	Yellow	Front seats.
F18	20A	Yellow	Rear RH seat heater module, parcel shelf sunblind.
F19	10A	Red	Driver's seat switch pack.
F20	20A	Yellow	Power boot lid.
F21	30A	Green	Sun roof module.
F22	60A	Blue	Air suspension.
F23	40A	Orange	E-diff module.