

INFORMATION MODULE

The driver information module is located in the instrument panel in front of the driver. Trip computer information is displayed on the information module when selected.

DISPLAY FUNCTIONS

In addition to the trip computer, the driver information module is used to inform the driver of impending service requirements, of the currently selected gear (automatic transmission only), and the CommandShift mode status (if selected).

Additionally, the main message centre is used to convey information, critical warnings, and non-critical warnings to the driver.

Active warning messages may be re-displayed by selecting **Show Warnings** on the vehicle information menu. See **58, VEHICLE INFORMATION AND SETTINGS MENU**.

CRITICAL WARNING MESSAGES



Do not ignore warning messages; take appropriate action immediately. Failure to do so may result in serious damage to the vehicle.

Critical warning messages are accompanied by an audible warning, and the message text may have the handbook symbol next to it. Critical warning messages are displayed until the condition causing the fault is rectified or the message is suppressed using the **OK** button on the steering wheel.

If the critical warning message is suppressed, a red warning icon will remain illuminated until the fault is rectified.

MESSAGES

For information regarding the individual messages, their meanings, and any action required, please refer to the relevant section within this handbook.

WARNING MESSAGES



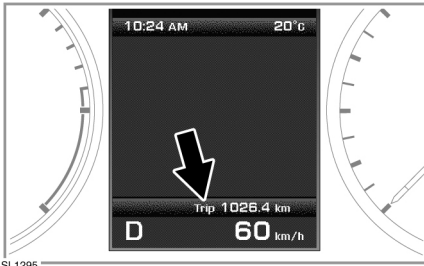
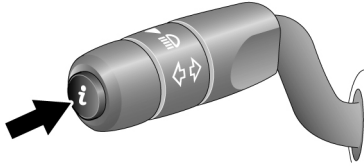
Do not ignore warning messages, take appropriate action as soon as possible. Failure to do so may result in serious damage to the vehicle.

If the message is suppressed, an amber warning icon will remain illuminated until the cause of the message is rectified.

Warning messages are accompanied by an audible warning. These messages are displayed until the condition causing the message changes or the message is suppressed using the **OK** button on the steering wheel.

***Note:** Messages are displayed in order of importance, with critical warning messages being the highest priority.*

TRIP COMPUTER



A short press (1 second or less) or a series of short presses of the **i** button will change the trip computer display.

The options available are:-

- Date and Odometer.
- Trip distance.
- Trip average speed.
- Trip average fuel consumption.
- Instantaneous (short term average) fuel consumption.
- Range available from remaining fuel.
- Blank display.

To reset the trip computer values to zero, press and hold the **i** button for 2 seconds.

To reset the fuel consumption figure, press and hold the **i** button until the display clears.

There are 3 trip memories available, A, B and Auto. You can specify which trip memory is viewable using the **i** button.

To reset trip A or trip B memory, display the trip memory you wish to reset and press and hold the **i** button until the message **Resetting Trip A or B** is displayed. Continue to hold the button for another 2 seconds to reset the Auto trip memory.

Display units for the trip computer may be changed via the Vehicle information and settings menu (See page 58).

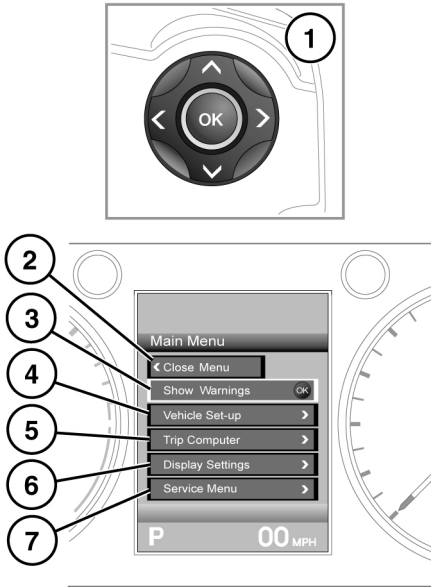
AUTO TRIP MEMORY

The Auto trip memory resets each time the engine is started and the vehicle moves.

Trips may be added together to record a continuous journey. Press the **i** button when Auto memory figures are displayed, and Adding previous journey will appear on the screen. Press the **i** button for longer than 1 second, and previous trip information will be added to the current trip and the cumulative total displayed.

If you wish to delete the trip you have added, again press the **i** button while displaying the Auto memory figures. Deleting previous journey will appear on the screen. While this message is displayed, press and hold the **i** button for longer than 1 second. The previous trip will be deleted from the total.

VEHICLE INFORMATION AND SETTINGS MENU



SL1296

A number of vehicle features and display settings may be configured via the vehicle information and settings menu.

To display and navigate through the vehicle information and settings menu, operate the menu control on the steering wheel.

1. Steering wheel navigation control.
2. Close and return to main menu.
3. Show any warning messages.
4. Access the vehicle set-up menu.
5. Access the trip computer menu.
6. Access the display settings menu.
7. Access the vehicle service menu.