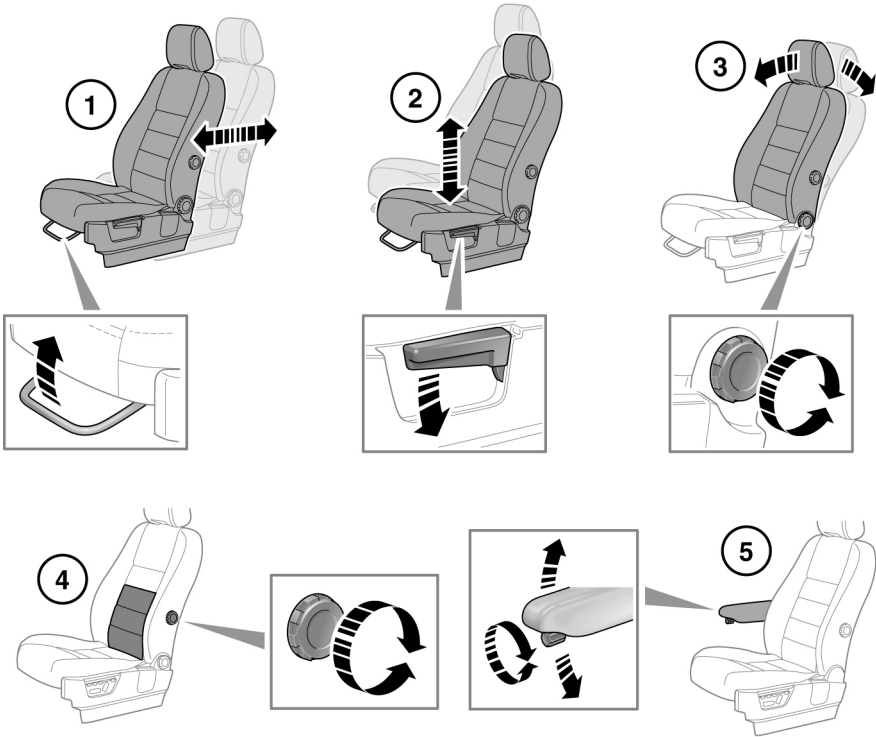


## MANUAL SEATS



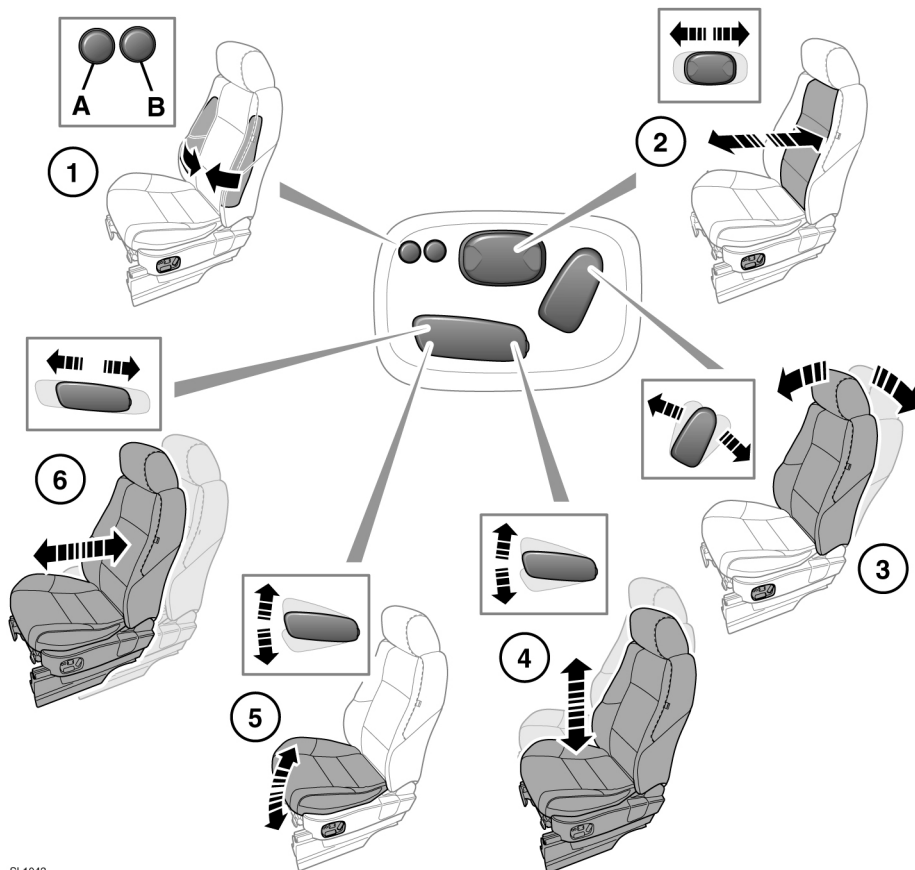
SL1044



**Do not adjust the seat while the vehicle is moving. Doing so could cause loss of vehicle control and personal injury.**

1. Fore and aft adjustment.
2. Height adjustment.
3. Backrest adjustment.
4. Lumbar support adjustment.
5. Armrest height adjustment.

## ELECTRIC SEATS



SL1043



**Do not adjust the seat while the vehicle is moving. Doing so could cause loss of vehicle control and personal injury.**

1. Bolster adjustment:
  - A. Bolster inflate.
  - B. Bolster deflate.
2. Lumbar support adjustment.

3. Backrest adjustment.
4. Height adjustment.
5. Cushion tilt adjustment.
6. Fore and aft adjustment.

To adjust the seats, the Smart Key must be in the vehicle and the ignition switched on.

## STALLED ADJUSTMENT

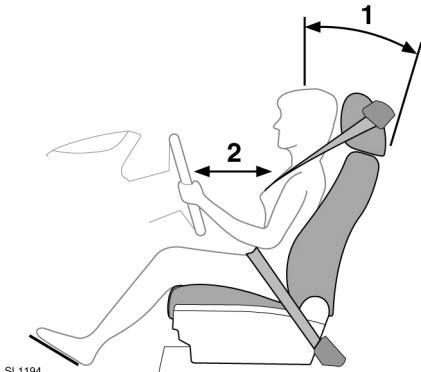
- ❗ If seat movement stops unexpectedly during adjustment, check for and remove any obstructions.

Once any obstructions have been removed, the seat adjustment mechanism can be reset as follows:

Operate the button again, to continue the stalled adjustment, and hold in that position for 2 seconds. When seat movement resumes, hold the button until the end of travel in that direction has been reached. Seat adjustment can now be carried out as normal.

**Note:** If no obstructions can be seen, but normal adjustment cannot be carried out without stalling, contact your Land Rover Dealer/Approved Repairer.

## SITTING IN THE CORRECT POSITION

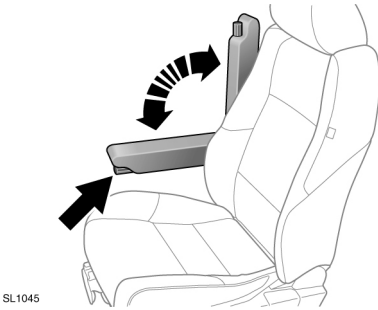


- ❗ **The driver and front seat passenger must not ride with the seat fully reclined.**
- ❗ **Do not adjust the seat while the vehicle is moving.**

The seat, head restraint, seat belt and airbags, all contribute to the protection of the user. Correct use of these components will give you greater protection. Therefore, you should always observe the following points:

1. Sit in an upright position with the base of your spine as far back as possible and the seatback reclined no more than 30 degrees.
  2. Do not move the driver's seat too close to the steering wheel. Ideally, a minimum distance of 254 mm (10 inches) is recommended between the breastbone and the steering wheel airbag cover. Hold the steering wheel in the correct position, with your arms slightly bent.
- Adjust the head restraint so that the top of the head restraint is above the centre line of the head.
  - Position the seat belt so that it is mid-way between your neck and your shoulder. Fit the strap tightly across your hips, not across your stomach.
  - Ensure that your driving position is comfortable and enables you to maintain full control of the vehicle.

## FOLDING ARMREST

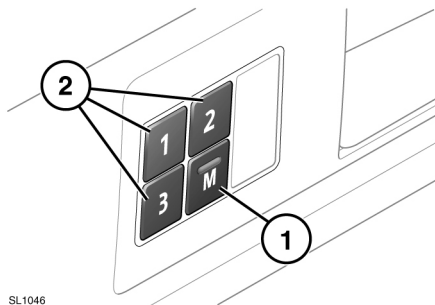


SL1045

If fitted, the folding armrest may be stowed by moving to the vertical position. Use the adjuster wheel (arrowed) to set the required height.

## DRIVING POSITION MEMORY

Once you have adjusted the power operated driver's seat, steering column (see **22, ADJUSTING THE STEERING COLUMN**) and exterior mirrors (see **47, ELECTRIC EXTERIOR MIRRORS**) for your ideal driving position, the vehicle can memorise these settings for future use.



SL1046

1. Press the memory store (M) button to activate the memory function. The switch indicator will illuminate.

2. Press one of the preset buttons within 5 seconds to memorise the current settings. **MEMORY (1, 2 or 3) SETTINGS SAVED** will be displayed on the message centre, accompanied by an audible chime to confirm the settings have been memorised.
3. To recall a stored position press the relevant preset button. **MEMORY (1, 2 OR 3) RECALLED** will be displayed in the message centre.

A seat position will only be memorised during the 5 second active period.

Any existing settings will be over-written when programming a memory position.

## ENTRY AND EXIT MODE

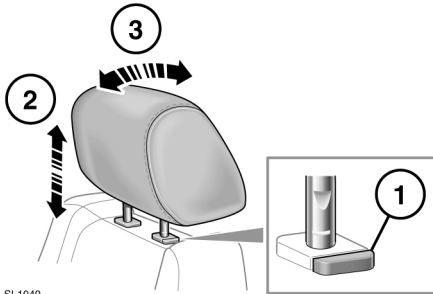
Entry and exit mode provides automatic movement of the steering column and driver's seat making it easier to enter or exit the vehicle. When enabled, on opening the driver's door the system will raise the steering column to the highest position, and lower the driver's seat to the lowest position assisting with exit from the vehicle.

When the driver's door is closed and the ignition turned on, the system will return the driver's seat and steering column to the previous position.

This feature is enabled by setting the steering column adjustment switch to the AUTO position. See **22, ADJUSTING THE STEERING COLUMN**.

**Note:** If the driver's seat or steering column are adjusted during entry or exit operation, automatic movement will stop.

## FRONT HEAD RESTRAINTS



1. Press the locking collar to release the head restraint.
2. Whilst pressing the locking collar, move the head restraint up or down to the required position.
3. Manually tilt the head restraint so that it is as close to the back of the head as is practical.

Manual head restraints may be removed, if required (e.g. to fit larger child seats). Raise the head restraint to its uppermost position and press the locking collar. Lift the restraint out of the seatback.

Ensure the head restraint is refitted before the seat is used by a passenger.

To refit the head restraint, ensure it is facing the correct direction, insert the stems of the head restraint into the sockets and push it downwards until at least the first click.

**Note:** Refer to **26, CHILD SEATS**, for details on correct child restraint fitment.



**Adjust the head restraint so that the top of the head restraint is above the centre line of the head. An incorrectly adjusted head restraint increases the risk of death or serious injury in the event of a collision.**



**It is possible to swivel the head restraint forwards or backwards. For greater protection in the event of a collision, the head restraint should be adjusted so that it is as close to the back of the head as is practical.**



**Do not drive, or carry passengers with the head restraints removed from occupied seats. The absence of a correctly adjusted head restraint increases the risk of neck injury in the event of a collision.**



**Never adjust the head restraints while the vehicle is in motion.**



**Always store a removed head restraint securely.**