



RANGE ROVER EVOQUE

OWNER'S HANDBOOK SUPPLEMENT

The following information relates to Range Rover Evoque and supplements the information in the Owner's handbook. Information in this supplement is not applicable to all models.

Publication Part No. LSB 10 02 60 161

Supplementary information

OPENING AND CLOSING THE POWERED TAILGATE

The tailgate can be opened using the following methods:

- The interior tailgate release switch.
- The Smart key tailgate release button.

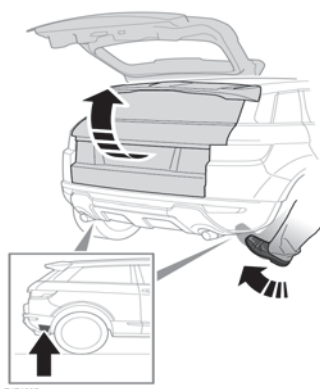
Note: The interior tailgate release switch and the Smart key tailgate release button cannot be used to close the tailgate.

GESTURE TAILGATE

⚠ Make sure that there is sufficient space above and at the rear of the vehicle, before operating the tailgate. Insufficient opening space may result in damage to the vehicle.

⚠ Do not operate the tailgate if a cycle rack is fitted to the tailgate. Remove any cycles and/or racks before operating the tailgate.

Sensors, positioned within the outer parts of the rear bumper, recognise movement of a foot below the bumper level and allow automatic opening or closing of a powered tailgate.



Approach the vehicle, and perform a smooth kick and return motion. This should last between one and two seconds and take place within one of the vehicle's two sensor areas, as illustrated.

When a valid kick movement is recognised by the vehicle, the direction indicators flash and the tailgate operates.

Note: If the ignition is on, the tailgate will operate but the direction indicators will not flash.

If an audible warning occurs, the tailgate will not operate.

⚠ Make sure that the standing area is stable and not slippery, before performing the kick movement.

⚠ Do not make contact with the vehicle exhaust. It may be hot and cause injury.

Note: A valid Smart key must be within 1.2 m of the tailgate. The Smart key may not be detected if it is placed within a metal container or if it is shielded by a device with a back-lit LCD screen, such as a smartphone, laptop (including when inside a laptop bag), game console, etc. Keep the Smart key clear of such devices when attempting hands-free operation of the powered tailgate.

Note: Certain conditions may affect the performance of the sensors, and movement beneath the bumper may not be detected. If this should happen, use the interior tailgate release switch or the Smart key tailgate release button. Check the operation of the Gesture tailgate when the vehicle is in a new location.

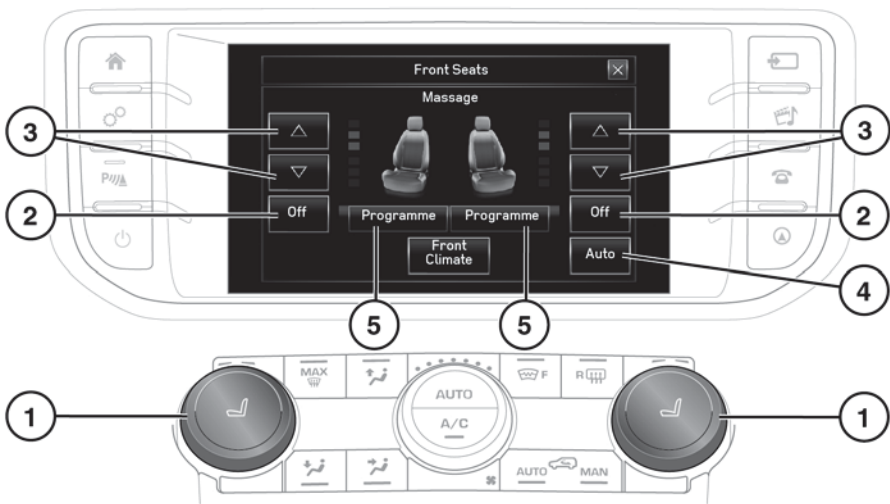
Supplementary information

Unintentional opening: In exceptional circumstances, and if the Smart key is within 1.2 m of the tailgate, the powered tailgate may open unintentionally due to the following:

- Car washing/high pressure cleaning.

- Moving objects beneath the rear bumper sensors.
- While changing a rear road wheel.

SEAT MESSAGE



E181005

Note: Seat massage may not operate when the vehicle's interior temperature is below 0°C or above 50°C.

Seat massage is controlled through the Touch screen.

1. Press to display the Front seats pop-up menu and then touch the Message soft key.
 - The pop-up menu screens will overlay the current screen. They will time-out after a short period and the previous menu screen will be displayed.

2. Touch to display the desired Seat massage program. Constant selection will scroll through the 5 different programs.
3. Touch to vary the intensity of the selected program.
4. Touch to end the program.
5. Touch to display a menu which allows the driver's seat auto massage to be switched **On** or **Off** and set the time delay from the start of the journey to **5, 15, 30 or 60** minute intervals.


After 10 minutes, Seat massage will stop automatically.

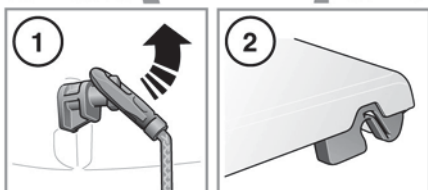
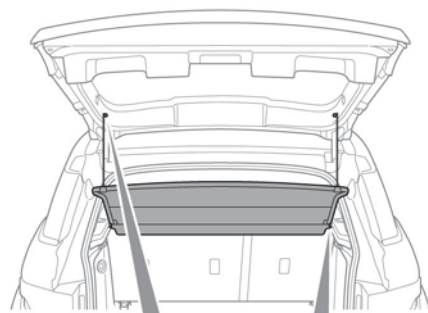
Supplementary information

ELECTRIC SEATS

Note: The diagram in the Owner's handbook covers all electric seat controls. Not all of these controls apply to all seats.

LOADSPACE COVER

 Never place objects on top of the loadspace cover. During an accident or sudden manoeuvre, loose objects can cause serious injury or death.




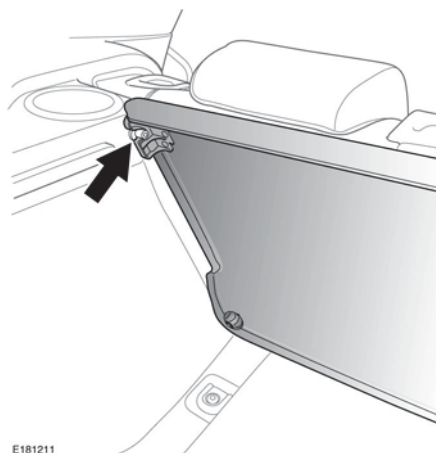
E181209

To remove the loadspace cover:

1. Release the 2 straps from the pins on the tailgate.
2. Lift the cover slightly, then pull the cover rearwards to release the cover's spring-loaded clips from the retaining pins on the loadspace side trim.

Storing the cover

 Do not store the loadspace cover loose in the vehicle. During an accident or sudden manoeuvre, the loadspace cover could cause serious injury or death.



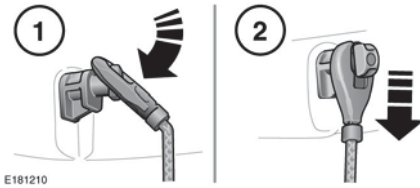
E181211

1. Remove the loadspace cover.
2. Fold the rear seats forward.
3. Position the cover vertically, approximately where the upright rear seatbacks are normally. The top surface of the cover must be facing forwards with the spring-loaded clips at the top.
4. Locate the cover's spring-loaded clips onto the retaining pins and click into place.
5. Return the rear seats to the upright, locked position.

Supplementary information

Refitting the cover

Locate the cover's spring-loaded clips onto the retaining pins. Push the cover back to fully engage the clips onto the pins.



To refit the straps:

1. Fit the straps over the pins on the tailgate.
2. Pull down lightly on the straps until they click into place.

TOWING WEIGHTS

For details of Gross Vehicle Weight (GVW), Gross Train Weight (GTW), the front and rear axle weights and the maximum payload weight, see 'WEIGHTS' in the Owner's handbook.

Trailer	Variant	On-road (kg)	Off-road (kg)
Unbraked trailer	All vehicles	750	750
Braked trailer	Petrol vehicles	1 800	750
	Diesel (manual gearbox) 2WD	1 500	750
	Diesel (manual gearbox) 4WD	1 800	750
	Diesel (automatic gearbox)	2 000	750
Nose weight*	All vehicles	120	120

*The nose weight can be increased to a maximum of 150 kg for all vehicles. Make sure that the maximum rear axle, the GVW and the GTW are not exceeded.

Supplementary information

USING THE PROGRESS CONTROL SYSTEM

For vehicles with Progress control and Hill Descent Control (HDC), the HDC button will perform multiple functions, i.e., enable/disable and alternate between Progress control and HDC.

With both features switched off, the button sequence is as follows:

1. Press and release the button to enable Progress control. A warning lamp will illuminate in the Instrument panel to confirm. See 'PROGRESS CONTROL SYSTEM (AMBER)' in the Owner's handbook.
2. Within 4 seconds, press and release the button again to enable HDC. A warning lamp will illuminate in the Instrument panel to confirm. See 'HILL DESCENT CONTROL (GREEN)' in the Owner's handbook.

Note: *If the second press of the button is after 4 seconds, Progress control will be switched off. If required, start the sequence again.*

3. When required, press and release the button to disable. The relevant warning lamp will extinguish to confirm.

HDC CONTROLS

Note: *Depending on the vehicle's specification, the HDC button will also operate the Progress control system. See 'USING THE PROGRESS CONTROL SYSTEM'.*

TRANSMISSION PARK RELEASE

The Transmission Park Release topic in the Vehicle Recovery section of the Owner's handbook is incorrect. The transmission park release in this vehicle is located in the engine compartment and must only be activated by suitably qualified personnel.