



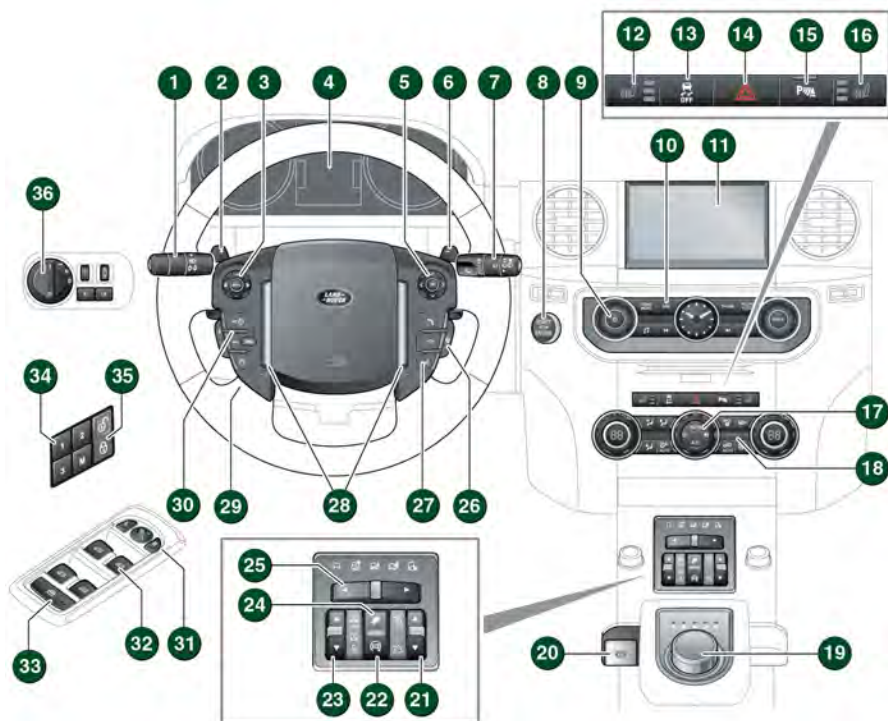
ABOVE & BEYOND

DISCOVERY

QUICK START GUIDE

- 2 DRIVER CONTROLS
- 3 VEHICLE ACCESS
- 4 COMFORT ADJUSTMENTS
- 6 DRIVING
- 11 TOUCH SCREEN
- 12 MEDIA
- 14 NAVIGATION
- 15 PHONE
- 16 FILLING STATION INFORMATION





1. Headlamps, direction indicators, and Trip computer.
2. Manual gear change paddle (-) down.
3. Audio and phone controls.
4. Instrument panel, warning lamps and Message centre.
5. Message centre menu control.
6. Manual gear change paddle (+) up.
7. Wipers and washers.
8. Engine START/STOP.
9. Audio on/off and volume control.
10. Navigation system.
11. Touch screen.
12. Heated seat - left side.
13. Dynamic stability control.
14. Hazard warning lamps.
15. Parking aids switch.
16. Heated seat - right side.
17. Auto climate control.
18. Passenger airbag status indicator.
19. Gear selector.
20. Electric parking brake.
21. Transfer gearbox control.
22. Intelligent stop/start.
23. Air suspension control.
24. Hill descent control.
25. Terrain response.
26. Heated steering wheel switch.
27. Telephone and voice recognition controls.
28. Horns.
29. Steering wheel adjuster.
30. Cruise control switches. Adaptive cruise control gap setting and Cruise control cancel.
31. Mirror controls.
32. Window controls.
33. Rear window isolation switch.
34. Driving position memory.
35. Central locking switches.
36. Exterior lamps and dimmer control.

VEHICLE ACCESS

SMART KEY



Press once to switch the headlamps on. Press again to switch off.



Press to unlock and release the tailgate. If the alarm is armed, it is inhibited while the tailgate is open.



Press and hold for three seconds to activate the panic alarm. After five seconds, press again for three seconds to cancel.

Unlocking mode alternatives



Single-point entry. Press once to disarm the alarm and unlock only the driver's door. If a locking fuel filler flap is fitted, it will unlock. Press twice to unlock all of the doors and the tailgate.

Multi-point entry. Press once to unlock all of the doors, the fuel filler flap, and the tailgate.

To change between entry modes, with the vehicle unlocked, press and hold the lock and unlock buttons simultaneously for three seconds. The hazard warning lamps flash to confirm the change.

Keyless entry/exit

The Smart key needs only to be on the driver's person while using a door handle. It does not need to be exposed or handled.

To lock the vehicle and arm the alarm, first make sure that the Smart key is on the driver's person. Press a door handle button once to Single lock. Press it twice within three seconds to Double lock.

Note: Do not hold the door handle when locking.

The Smart key may not be detected if it is placed in a metal container, or if it is shielded by a device with a back-lit LCD screen, (e.g., laptop, smart phone, etc). Keep the Smart key clear of such devices when attempting Keyless entry or Keyless starting. Loose coins in the same pocket as the Smart key can also act as a shield.

Emergency key release

If the Smart key fails to open the vehicle, the emergency keyblade can be used. Slide the side section up, then pull sideways to remove. Remove the keyblade and unfold it. Use the blade to gently lever off the appropriate door lock cover. The cover has a key symbol embossed into it.

Insert the key into the exposed lock, then turn and release it to unlock.



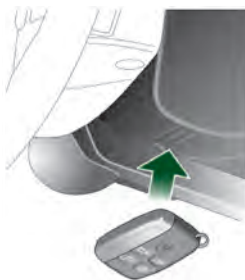
If the security system was previously armed with the Smart key, when the door is unlocked, the alarm sounds. To disarm the alarm, press the unlock button on the Smart key, or press the **START/STOP** button with the Smart key inside the vehicle.

Smart key not found

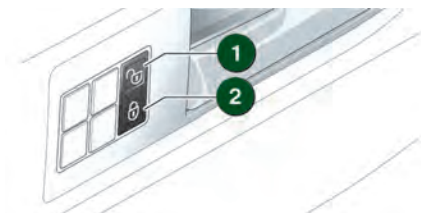
If, after closing all of the doors, the Smart key is not detected by the vehicle, **Smart Key Not Found** is

displayed in the Message centre.

Hold the Smart key under the steering column in the indicated position. Start the engine as normal. The Smart key can now be removed.



CENTRAL DOOR LOCKING *See page 2, item 35.*



1. Press to unlock all of the doors and the tailgate.
2. Press to lock all of the doors and the tailgate. This does not activate the alarm.

Operating note

If the vehicle is Single locked with the Smart key or by Keyless locking, the master unlocking switch will not release the locks. The door levers will still release the locks and open the doors.

Drive-away locking

If enabled, all apertures automatically lock when the vehicle's speed exceeds 8 km/h (5 mph).

This feature can be turned on or off in the **Vehicle Set-up** option, accessed via the Instrument panel menu.

COMFORT ADJUSTMENTS

SEAT ADJUSTMENT

Power seats

1. Bolster inflate/deflate.
2. Lumbar support.
3. Seatback angle.
4. Seat forwards and back, cushion height and cushion angle.



Manual seats

1. Seat forwards and back.
2. Cushion height.
3. Seatback angle.
4. Lower seatback lumbar support.



STEERING WHEEL POSITION *See page 2, item 29.*



The steering wheel position can be adjusted in four directions, corresponding with the movement of the electric adjustment control.

With the vehicle stationary, rotate the control clockwise, then adjust the steering wheel to your ideal driving position.

Return the control to the **AUTO** position.

DRIVING POSITION MEMORY *See page 2, item 34.*

When the driver's seat, steering wheel and door mirrors are adjusted to the required position, the settings can be stored.

1. Press the **M** button to activate the memory store function. The button illuminates to indicate that the memory store function is active.
2. Within five seconds, press memory button **1**, **2** or **3** to store the current driving position.
3. A stored memory position can now be recalled with a press of the appropriate button. The driver's seat, steering wheel, and mirrors move to their preset positions.



Time limit

Memory buttons must be pressed within five seconds of pressing the **M** button, otherwise, the memory store function cancels.

PASSENGER AIRBAG DEACTIVATION



If it becomes necessary to fit a child restraint on the front passenger seat, the passenger airbag **MUST** be deactivated.

To deactivate, open the front passenger door, and use the emergency key to turn the **PASS.AIRBAG** switch at the end of the fascia to the **OFF** position.

The status indicator in the centre console will be illuminated while the ignition is on.

When an adult, or an average size child over 12 years of age, is seated in the front passenger seat, make sure the **PASS.AIRBAG** switch is turned to the **ON** position.

COMFORT ADJUSTMENTS

SEAT BELTS AND CHILD RESTRAINTS



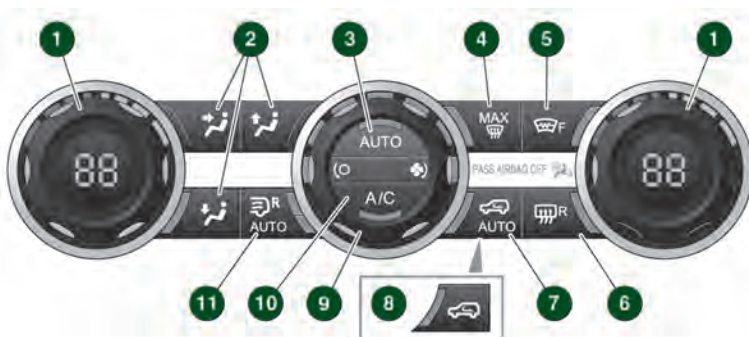
A warning indicator in the Instrument panel illuminates if a front seat belt is unbuckled. This may be accompanied by an intermittent chime.

Child seats

It is the weight of a child, rather than the age, that determines the type of seat required.

Refer to **Child safety** in the Owner's Handbook to determine the correct seat for the child.

CLIMATE CONTROL *See page 2, item 17.*



1. Rotate the controls to set the required temperature.

Operating note

The automatic system allows a temperature differential of up to 4°C between the left and the right passenger areas.

2. Air distribution.

- Face level.
- Windscreen and side window vents.
- Foot level.

The automatic system allows more than one setting to be selected at once.

3. Press for automatic operation of the Climate control system. The system adjusts the air conditioning, blower speed, air intake, and airflow distribution, to maintain the selected temperature(s).
4. Fastest method to remove frost and heavy misting from the windscreen. Press **AUTO** to switch off.

Operating note

AUTO is the recommended Climate control operating mode. This will help to prevent misting.

5. Heated windscreen.
6. Heated rear screen.

7. Air recirculation with air quality sensing.

- Press once to activate and restrict the ingress of traffic fumes. Extended use causes screen misting.
- Press twice for automatic recirculation control.
- Press again to switch off.

8. Air recirculation. Extended use causes screen misting.

9. Rotate the blower control clockwise to increase and counter-clockwise to decrease airflow from the vents.

10. Press for cooled and dehumidified air. Press again to switch the air conditioning off.

11. Rear environment.

- Press once for rear heating and air conditioning.
- Press twice to allow rear passenger control.
- Press again to switch off.



Seat heater switches. Located above the Climate control panel.

- Press once for high level heat.
- Press twice for medium heat.
- Press three times for low level heat.
- Press again to switch off.

ENGINE START/STOP *See page 2, item 8.*

Engine start

1. The transmission must be in the **P** or **N** position.
2. Press the brake pedal firmly.
3. Press and release the **START/STOP** button to start the engine.
4. Press again to stop the engine and switch off the ignition.

Diesel engine starting

In extreme, low temperatures, there may be a delay between the **START/STOP** button being pressed and the engine cranking. Make sure that the brake pedal remains pressed. **DO NOT** press the **START/STOP** button again. Cranking time will be increased.

Rolling re-start

If the engine is switched off while the vehicle is moving, it can be restarted after two seconds have elapsed. Select transmission **N** and then press the **START/STOP** button.

Smart key removal from the vehicle

If Intelligent stop/start is disabled, the engine continues to run, even if the Smart key is removed from the vehicle. However, if the engine is stopped, it cannot be restarted until the Smart key is returned to the vehicle.

INSTRUMENT PANEL AND MESSAGE CENTRE *See page 2, items 4 and 5.*



When the ignition is switched on, the Instrument panel progresses through a warning and information lamps bulb check. If any lamps remain on after six seconds, the cause should be investigated.

Driver information is displayed in the Message centre panel and on the inner sections of the instrument dials.

To access the main menu in the Instrument panel

1. Press the **OK** button on the steering wheel control.
2. Use the direction controls to move through the menu and subsequent options.
3. Press **OK** to confirm your selections.



WARNING AND INFORMATION LAMPS

Lamps may illuminate during normal driving, to indicate that a related system or feature is operating. If any other warning lamp illuminates, refer to the Owner's Handbook. DO NOT ignore warning lamps.



Notification of a critical warning in Message centre.



Low brake fluid or a system fault.



Flashing. Electric parking brake fault.



Low oil pressure.



A seat belt is unbuckled.



Notification of a non-critical warning in Message centre.



Emissions fault.



Emergency brake assist fault or worn brake pads.



On continuously. Dynamic stability control fault.



ABS fault.



Airbag system fault.



Adaptive front lighting system fault.



Low fuel level.



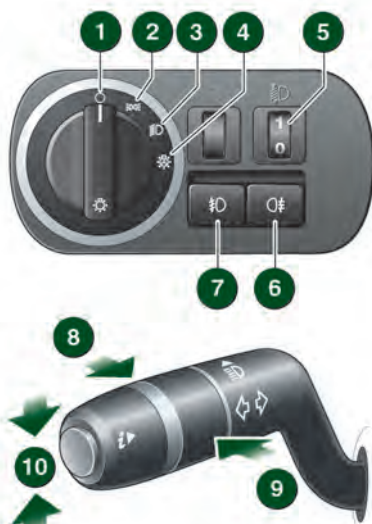
Adaptive cruise control is in Follow mode.



One or more tyres are underinflated.

EXTERIOR LAMPS AND DIRECTION INDICATORS *See page 2, items 1 and 36.*

1. Exterior lamps master switch off.
2. Side lamps.
3. Headlamps.
4. Autolamps with Auto high beam.
A sensor monitors the exterior light levels and will switch the side lamps and low beam headlamps on and off, as required.
A related sensor also controls the Auto high beam, when it is enabled. The high beam/low beam control must be in the low beam position and the vehicle's speed above 40 km/h (25 mph).
5. Halogen headlamps height adjuster.
6. Rear fog lamps.
7. Front fog lamps.
8. Headlamp flash. Pull the control towards the steering wheel and release.
9. Headlamp high beam. Push the control forwards to select headlamp high beam.
10. Direction indicators flash. Move the control up or down against spring pressure and release to flash the indicators three times. This is useful when lane changing.



WIPERS AND WASHERS *See page 2, item 7.*

1. Automatic rain sensing. The front wipers respond to rain severity.
2. Rotate towards **MAX** to increase the sensitivity of the Automatic rain sensing function.
3. Low speed continuous wipe.
4. High speed continuous wipe.
5. Windscreen single wipe.
6. Windscreen wash/wipe.
7. Rear wiper. Rotate to **ON** for intermittent wipe. Frequency increases with the vehicle's speed.
8. Rear wash/wipe. Continue to hold for additional operation.



To prevent inadvertent wiper activation, turn the Automatic rain sensing off;

- Before entering an automatic car wash.
- During hot, dry and dusty periods.

CRUISE CONTROL *See page 2, item 30.*

1. Press to activate Cruise control and to set a speed or increase the speed in 2 km/h (1 mph) steps.
2. Press to resume the previous set speed retained in the memory. Set speeds are cleared at ignition switch off.
3. Press to cancel Cruise control but retain the set speed in the memory.
4. Press to decrease the speed in 2 km/h (1 mph) steps.



Cruise control override

Cruise control disengages if the brake pedal is pressed, or when the vehicle's speed falls below 30 km/h (18 mph).

PARKING AIDS *See page 2, item 15.*

Front and rear Parking aids are activated when transmission **R** is selected. When a forward gear is subsequently selected, the Parking aids remain active until the vehicle's forward speed exceeds 16 km/h (10 mph).

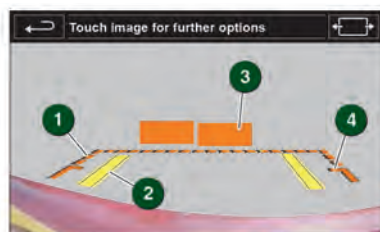
If an obstruction is detected, an intermittent tone sounds. Moving closer to the obstruction increases the frequency of the tone.

Rear camera

Activates when transmission **R** is selected. The Touch screen displays guidance lines to aid reversing.

To view the user options, briefly touch the screen. Use the Back soft key to return to the previous screen.

1. Broken line - full width of the vehicle.
2. Solid line - projected reversing path based on the current steering wheel position.
3. Parking sensors activated - shaded areas indicate which rear sensors are active.
4. Tailgate access guideline - do not reverse beyond this point if tailgate access is required.
5. User options. Touch one of the mini views to select overlay options.



6. Hitch assist. To aid the process of guiding the vehicle to the trailer tow hitch. A single hitch line is displayed as the reversing guideline. As the vehicle closes to within 0.6 m of the tow hitch, an automated zoom is operated.

TRANSMISSION

Gear selections can be made with either the rotary selector or with the paddle shifts. The rotary selector elevates from the console at engine start-up.

1. With the engine running and transmission **P** selected, press the brake pedal. Rotate the selector to **R** or **D**.



2. **Sport mode.** This is an automatic gear change mode, however, change points are modified to make full use of engine power. Press the selector down and rotate it to **S**. The indicator, alongside the selector, illuminates. To return to automatic gear selection, move the selector back to **D**.

3. **CommandShift mode.** This is an alternative to the automatic modes and is effective when rapid acceleration and engine braking are required. With **S** selected, use the left paddle shift (-) for downshifts and the right paddle shift (+) for upshifts.
4. With either paddle shift, pull it towards the steering wheel and release, to make a gear change.

The Message centre displays the selected gear.

Transfer gearbox

1. **High range.** Use for all normal road driving conditions and also for driving off-road across dry, level terrain.
2. **Low range.** Use in situations where low speed manoeuvring is necessary, or in extreme off-road conditions.



Range changing

The recommended method for range changing is with the vehicle stationary.

With the engine running and transmission **N** selected, move the transfer switch to the required position and then release. The switch and Instrument panel lamps flash during a range change.

When range changing is complete, a message is displayed in the Message centre.

INTELLIGENT STOP/START *See page 2, item 22.*

Intelligent stop/start automatically activates when the ignition is switched on. If the vehicle is stopped and the brake pedal is pressed, the engine switches off (unless it is required to support other vehicle systems).



A green **ECO** icon illuminates in the Message centre.

When the brake pedal is released and a drive gear is engaged, the engine restarts.

Note: Intelligent stop/start is not available while a Terrain response program is active.

To switch Intelligent stop/start off, press the **ECO** switch. An **ECO** message is displayed momentarily in the Message centre.

Note: The engine restarts automatically if the switch is pressed while an automatic engine stop is in progress.



ELECTRIC PARKING BRAKE (EPB) *See page 2, item 20.*

Applying

- With the vehicle stationary, lift up the EPB switch and then release it. The red warning lamp in the Instrument panel illuminates.
- The EPB applies automatically if the ignition is switched off and the vehicle's speed is below 3 km/h (2 mph).

Releasing

- With the ignition on, press the brake pedal and press down on the EPB switch.
- If the vehicle is stationary with the EPB applied and either transmission **D** or **R** is selected, pressing the accelerator automatically releases the EPB.

SUSPENSION HEIGHT *See page 2, item 23.*



1. Raise/lower rocker switch. A height rise can be made only when the engine is running and all of the doors are closed.
2. The appropriate switch arrow illuminates while a height change is in progress.
3. Off-road height. Provides increased ground clearance.
4. On-road height. Normal ride height.

5. Access height. Lowers the vehicle to provide easier entry, exit, and loading of the vehicle. This position may be selected up to 40 seconds after the ignition is turned off. Can also be selected when slowing to a halt. When the vehicle speed slows to 20 km/h (12 mph), the vehicle begins to lower. The indicator lamps in the switch extinguish when Access height is reached.
6. Crawl (locked at Access height). Allows the vehicle to be driven at low speeds at Access height, to give increased roof clearance.

Automatic operation

The vehicle's height automatically adjusts according to road speed to maintain optimum driveability and handling.

Some Terrain response programs adjust the suspension height automatically.

TERRAIN RESPONSE *See page 2, item 25.*



Terrain response is always active and cannot be switched off. When the vehicle is started, the system normally starts in its General program.

Press the control to select a program. This adjusts the vehicle's systems, including drive and suspension, to enhance driveability and traction on specific surface conditions and terrains.

We recommend that a special program is engaged whenever driving conditions are difficult, and cancelled once those conditions are no longer present.



General - Use for typical road surfaces.



Grass-Gravel-Snow - Suitable for surfaces which are firm but have a slippery surface, e.g., grass, snow, loose gravel, pebbles, or icy conditions.



Mud-Ruts - Suitable for soft, muddy, uneven, or deeply rutted ground. **LOW** range selection in the Transfer gearbox is recommended.



Sand - Suitable for soft, predominantly dry, yielding, sandy ground, e.g., sand dunes and deserts. If the sand is damp or wet, the Mud-Ruts program may be more beneficial.



Rock Crawl - Only selectable when in **LOW** range. Suitable for crossing wet or dry, solid, unyielding ground requiring high levels of wheel displacement, e.g., clusters of boulders or rocky river beds.

Wading

When wading through water, select the program most suitable for the surface beneath the water.

DO NOT exceed 600 mm of water depth. With the suspension set at Off-road height, this is increased to 700 mm.

DO NOT stop the vehicle or switch off the engine while wading. Severe electrical damage may occur.

TOUCH SCREEN

TOUCH SCREEN AND CONTROLS See page 2, item 11.

Note: Screen content will vary, depending on vehicle specification.



1. **Valet** mode. Locks the luggage areas and prevents access to the Touch screen when allowing others, (e.g., a parking attendant) to take charge of your vehicle. You must enter a four digit code of your choice. When re-entering the vehicle, the code is needed to unlock this security feature. During menu selection mode, this icon changes to the back soft key.
2. Touch to repeat the last navigation voice instruction. During a phone call, the icon changes to indicate that a call is in progress. Touch to end the call.
3. Touch to select for time or date adjustment.
4. Touch to carry out the following operations:
 - When a phone is paired: Access the phonebook.
 - When a phone is not paired: Access the phone connection screen.
5. Touch to display the **Phone** screen.
6. From the Home menu, touch to navigate to the **Extra features** menu.
7. Touch to carry out the following operations:
 - When no route guidance is selected: Access the **Destination entry** menu.
 - When route guidance is selected: **Cancel guidance**.
8. Touch to display the **Nav** menu.
9. Touch to display the **Setup** menu.
10. **MODE**. Press and then rotate to select the required media source.
11. Press to display the **Setup** menu.
12. Press to display the Media menu.
13. Press to display the **Phone** screen.
14. Press to display the **Nav** menu.
15. Press to display the **Home** menu.
16. Press to display the **Audio settings** menu. When Surround cameras are fitted, this icon is changed and the button then switches the cameras on/off.
17. Press to switch the Media system on/off. Rotate to adjust the volume level.
18. Touch to switch off the Touch screen.
19. Touch to display the **Media** menu.
20. Touch to carry out the following operations:
 - CD, Bluetooth, and USB: Alternate between play and pause.
 - DVD in normal play: Short press to pause, or long press to activate slow play.
 - DVD in slow play or paused: Activate normal play.
21. From the Home menu, touch to navigate to the **Shortcuts** menu.

The Touch screen requires only light touches. Excess pressure could result in damage.

RADIO



1. Touch to view and select wavebands. The radio tunes to the last used channel on that band. Touch again to close.
2. Touch to auto-seek down to the next radio station. Touch and hold to activate manual seek mode.
3. View information broadcast by the radio station.

4. Touch to auto-seek up to the next radio station. Touch and hold to activate manual seek mode.
5. **Settings** menu. Select from **RDS**, **Traffic**, **News**, **AF**, and **REG**.
6. **Station list**. Options are available only for **FM** wavebands. All available FM stations are listed. The list can be sorted by **Frequency**, **Name**, or **Program Type** (pop, news, sport), by selecting the appropriate soft key.
7. **Frequency input**. Enter a station frequency. When the final digit is entered, the station is tuned.
8. Preset soft keys. Up to six stations can be stored on each waveband. Touch and hold a soft key to store the current radio station. When you next want to use a stored station, make sure that the correct waveband is selected and then briefly press the preset.

DAB RADIO

Digital radio channels are arranged into groups called ensembles. Each digital channel may also have associated subchannels.

Note: *Subchannels are temporary channels and may be discontinued at any time.*



1. Touch to view and select a **DAB** band (**DAB 1**, **2** or **3**). The radio tunes to the last used channel on that band. Touch again to close.
2. Touch to seek the previous available channel. Touch and hold to seek the previous available ensemble. The first channel in the new ensemble is selected.
3. Touch to view DAB text and channel information.
4. Touch to seek the next available channel. Touch and hold to seek the next available ensemble. The first channel in the new ensemble is selected.

5. Touch **Settings** to view:
Options. Activate/deactivate **FM Traffic** and **Link DAB** and to alter **DAB country** and **DAB format** settings, (with the vehicle stationary).
Announcements. Select an alarm announcement and up to three other announcement types from the list. Selected types interrupt the current programme, when broadcast.
6. Touch to view a list of available ensembles and channels. The list can be sorted by **Ensemble**, **Channel**, **Subchannel** or by **Category**. If **Ensemble** is selected, all available channels from that ensemble are displayed. Sorting by **Subchannel** is available only when the current channel is broadcasting subchannels. If **Category** is selected, touch the chosen category to view corresponding channels, before making your selection from the list.
7. If subchannels are broadcast by the current channel, **Subchannel** will be active. Touch and then select the required subchannel with the seek soft keys.
8. Select to scan for all available DAB ensembles/channels. This needs to be done before using the DAB radio for the first time. **Auto-tune** is also useful when travelling long distances, so regional ensembles can be tuned.
9. Station presets: Touch and release a preset to tune to the station stored on that preset. Touch and hold to store the current station to that preset.

Note: *If you attempt to select a preset channel that is now unavailable or invalid, **No reception** is displayed.*

CD OPERATION



Includes CD, iPod®, USB, AUX and **Bluetooth®** wireless technology devices. The full infotainment system also includes Stored CD.

Select the **My music** menu.

1. Touch **Source** to display all of the options. Select an option.

Note: Sound quality and volume levels available from devices connected to the auxiliary input may vary widely.

2. Touch to switch traffic and news on or off. Additionally, for MP3 recorded media, you can select the number of list entries that are skipped when using the page up/down arrows.
3. Touch to view the current CD or Stored CD track list. Select a track to start playback.
4. Touch to view contents of the connected device and start playback.
5. Touch to view and manage the Stored CD memory.
 - Select **Upload**, alongside an empty slot, to upload a CD. There are 10 slots available.
 - Select **Replace** to overwrite an existing CD.
6. Skip/Scan forwards.

7. Repeat

In **CD** mode:

- Touch briefly to repeat the current track continuously.
- Touch again briefly to repeat the current Stored CD (or folder for MP3 discs) continuously until **Repeat** mode is cancelled.
- Touch a third time to cancel **Repeat** mode.

In **USB** or **iPod** mode:

- Touch briefly to repeat the current track continuously.
- Touch again briefly to repeat the current USB folder or to cancel iPod **Repeat** mode.
- Touch a third time to cancel USB **Repeat** mode.

Note: Repeat mode is not available for **Bluetooth** wireless technology devices.

8. Pause/Play: Select to pause playback. Select again to resume playback.

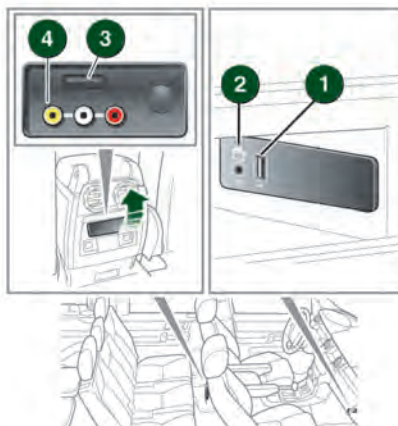
9. View information about the current track.

10. Touch to play random tracks from the current media. Touch again to cancel.

Note: Shuffle mode is not available for **Bluetooth** wireless technology devices.

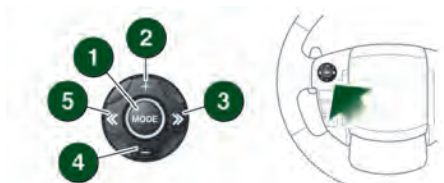
11. Skip/Scan backwards.

Connecting a device



1. USB.
2. 3.5 mm AUX socket.
3. Rear media USB.
4. Rear media AV sockets.

STEERING WHEEL AUDIO CONTROL See page 2, item 3.



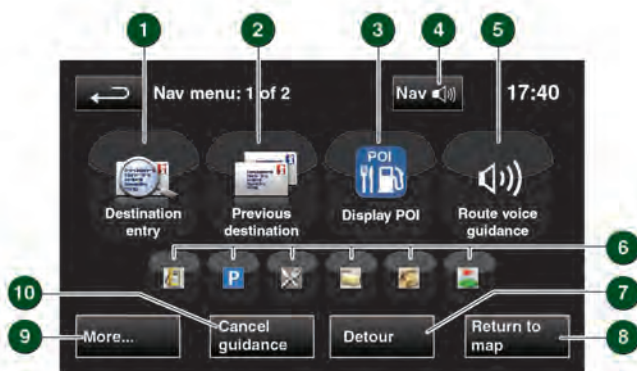
1. Press repeatedly for Media sources.
2. Volume increase.
3. Seek up.
4. Volume decrease.
5. Seek down.

TOUCH SCREEN NAVIGATION

Country selection

On initial activation, make sure that both the correct country and search area have been selected.

For more information, refer to the Navigation section of the Owner's Handbook.



Note: To access navigation, press either the **NAV** hard key or touch the **Nav** icon on the **Home menu**.

1. Use to enter a new destination. Provides a choice of options when entering a destination.
2. Displays previous destinations entered. Previous destinations can be selected.
3. Turns the POI (Point of interest) icons on the map on/off.
4. Only visible when a destination is set. Enables the last voice instruction to be repeated.
5. Highlighted while Route voice guidance is enabled. Touch to turn Route voice guidance off.
6. POI shortcuts: Touch an icon to list available POIs that are close to the vehicle's position.
7. Calculates a detour from the current route.
8. Advances to the main map screen.
9. There are two navigation menu screens. Use the **More...** soft key to toggle between them. The second map screen features the following soft keys:
 - **Stored locations.** Use to manage the stored data.
 - **TMC** (Traffic message channel). Provides data about road conditions and any events on the route ahead that may affect the current route.
 - **Route options.** Allows selection of various options for the route.
 - **Nav set-up.** For setting personal preferences within the Navigation system.
10. Cancels the current Route guidance.

Selecting navigation

When navigation is selected after the ignition is turned on, a caution screen is displayed. Touch **Agree**.

Note: At the first time of accessing the caution screen, set the required language.

Setting a destination

1. Select **Destination entry**.
2. Select **Address** and enter address details using the keypad. As each part of the address is refined, touch **OK** or **List** to display all of the streets and towns that are available for selection.
3. If the house number is not known, press **OK**. The end of the road is then used as the destination.
4. When the address entry fields are complete, press **OK** to move to the map screen.

Start guidance

The map screen displays the selected destination. Touch **GO** to start route calculation. Touch **Review route** if you want to take an alternative route.

Touch **Go** to start guidance.

Review route

There will be a choice of **3 routes** or **Change route**. **3 routes** displays three different route options on the map. Select Route 1, 2 or 3 by touching the respective box displayed on the right side of the map.

Select **Change route**, then **Route preferences**, to change the route settings.

When the final route selection is made, select **GO**.

BLUETOOTH® WIRELESS TECHNOLOGY DEVICES

Bluetooth® connectivity

Compatible **Bluetooth** wireless technology devices can communicate with the vehicle's in-built telephone system. For the latest list of compatible phones and their software, refer to www.landrover.com. Select **OWNERSHIP** and then **Bluetooth**.

Note: The process of pairing and connecting a phone to the vehicle varies depending on the type of phone used.

Use the following procedure in conjunction with your phone manufacturer's instructions.

Connection must be made with the ignition on or the engine running.

Pairing and connecting using a phone

1. Switch the ignition on and make sure that the Touch screen is active.
2. From the **Home menu**, select **Phone**.
3. If no phone is connected, select **Search new**, otherwise select **Change phone** and then select **Search new**.
4. Select the **Device to vehicle** option.

Note: The vehicle's **Bluetooth** wireless technology system is discoverable for only three minutes.

5. Using the phone, search for **Bluetooth** wireless technology devices. On some phones, this is referred to as a new paired device. See the manufacturer's instructions.
6. When the vehicle's system is discovered, begin the pairing process and follow the on-screen instructions.
7. When requested, enter a PIN of your choice into the phone and the vehicle's system. Select **OK**.
8. When your phone is paired and connected, a confirmation message will be displayed.

Note: Some phones require the pairing to be set as 'authorised' or 'trusted' in order to automatically connect. Please refer to your phone's operating instructions for further information.

Downloading phonebook entries

When a phone with phonebook download capability is paired and docked, its phonebook directory can be automatically downloaded to the vehicle's system.

See **PHONEBOOK** in the Owner's Handbook for more information.

Calls via the Touch screen








With a paired and active phone, press the **PHONE** button below the Touch screen.



1. Select **Digit dial**, **Phonebook** or **Last 10**. With **Digit dial** selected, use the keypad to enter the number. With **Phonebook** selected, choose a number from the downloaded phonebook. **Last 10** displays the previous 10 calls. Choose one to dial.
2. To make a call, touch the green connect icon. The icon changes to a red connected call icon. To end a call, touch the red icon.

Calls via the steering wheel controls

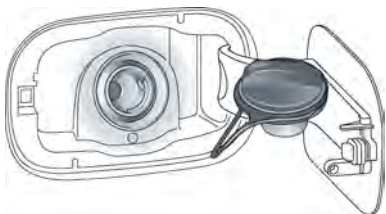
See page 2, item 27.

-  Connect. Press and release to send or accept a call, or to access the **Last 10** dialled list. Press and hold to access the **Phonebook**.
-  Disconnect. Use to end or reject a call.
-  Voice control talk button. The screen displays the available options. Say 'Phone' and follow the displayed instructions.
-  Press to increase the call volume.
-  Press to decrease the call volume.
-  Press to scroll up or down lists of calls or phonebook entries.
- 

REFUELLING

The fuel filler flap is located on the right side of the vehicle. If the vehicle is locked, the fuel filler flap cannot be opened.

Press the flap firmly at the rear edge and release. After the spring loaded mechanism releases the flap, pull it fully open. The correct fuel specification is shown on the inside of the fuel filler flap.



Twist the cap counter-clockwise to release. A hook is provided on the flap hinge, to hold the cap while refuelling. Replace the cap and turn it clockwise until the ratchet clicks. Close the fuel filler flap until it is latched in the closed position.

Diesel misfuelling prevention

One of two types of diesel misfuelling protection devices may be fitted in the fuel filler neck. The device helps to prevent the diesel fuel tank being accidentally filled with petrol.

With the active misfuelling protection device, a metal flap in the filler neck will open only when the correct size of fuel nozzle is fully inserted into the fuel filler neck.

The passive device will activate if a narrow type of fuel nozzle is fully inserted. The narrow fuel nozzle is associated with unleaded petrol pumps. When the device is activated, a yellow flap is visible in the filler neck. Use the reset tool, located in the vehicle's tool kit, to reset the device.

Both device types will block the passage to fuel. If fuelling continues, it may cause fuel to be discharged from the filler neck.

Refer to the **Fuel and refuelling** section in your Owner's Handbook for further details and how to reset the device after activation.

Fuel information

DO NOT use E85 fuels (85% ethanol content). Equipment necessary for the use of fuels containing more than 10% ethanol is not fitted to this vehicle. If E85 fuels are used, serious engine and fuel system damage will occur.

Avoid using fuel containing methanol. Fuels containing methanol may cause serious engine and fuel system damage.

Unleaded fuels containing up to 15% MTBE can be used.

Fuel information

Jaguar Land Rover vehicles are capable of running with up to a 7% blend of Bio-diesel.

DO NOT use a higher blend of Bio-diesel fuel.

Incorrect fuelling

No responsibility is accepted for damage caused by using incorrect fuels.

If the vehicle is filled with the wrong type of fuel:

- **DO NOT** start the engine!
- **Call for qualified assistance!**

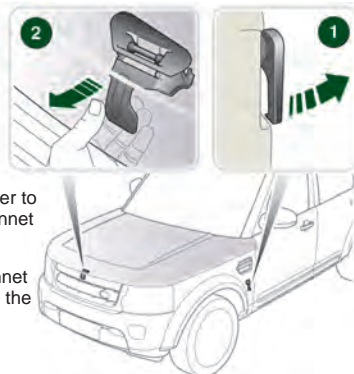
TYRE PRESSURE LABEL



Tyre pressures are shown on a label located in the driver's door opening.

Note: Tyre pressures must be checked and adjusted while the tyres are cold.

BONNET RELEASE



1. Pull the lever to release the bonnet lock.
2. Lift the bonnet lever and raise the bonnet.