

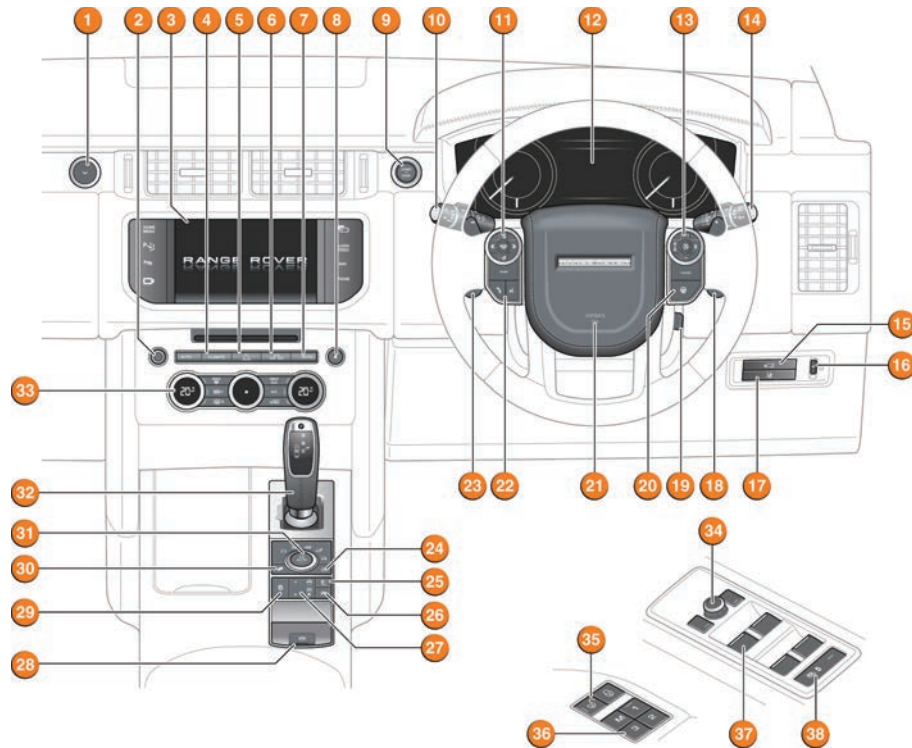
# RANGE ROVER SPORT

## QUICK START GUIDE

- 2 DRIVER CONTROLS
- 3 VEHICLE ACCESS
- 4 COMFORT ADJUSTMENTS
- 6 DRIVING
- 12 TOUCH SCREEN
- 13 NAVIGATION SYSTEM
- 14 AUDIO/VIDEO
- 16 TELEPHONE

SOME FEATURES MAY NOT BE FITTED TO YOUR VEHICLE.





1. Glovebox release.
2. Audio on/off and volume.
3. Touch screen.
4. Front climate control menu.
5. Hazard warning lamps.
6. Heated/climate seat menu.
7. Automatic operation of climate control.
8. CD eject.
9. Engine START/STOP.
10. Exterior lamps, direction indicators and trip computer.
11. Message centre menu control.
12. Instrument panel, warning lamps and message centre.
13. Cruise control/Adaptive cruise control.
14. Wipers and washers.
15. Tailgate release.
16. Interior lamps dimming control.
17. Lane departure warning button.
18. Paddle shift up gear selection.
19. Steering column adjuster.
20. Heated steering wheel.
21. Horn.
22. Telephone and voice recognition controls.
23. Paddle shift down gear selection.
24. Low range transmission.
25. Automatic speed limiter (ASL).
26. Intelligent stop/start.
27. Air suspension control.
28. Electric parking brake.
29. Dynamic stability control (DSC).
30. Hill Descent Control (HDC).
31. Terrain response.
32. Gear selector.
33. Climate control.
34. Mirror adjuster/powerfold mirror.
35. Central locking switches.
36. Driving position memory.
37. Window controls.
38. Rear windows isolation and child door locks.

## Smart key



Press once to switch the approach lamps on. Press again to switch off.



Press to unlock and release the tailgate. A powered tailgate will open to the set height. Press again to close.



Press and hold for 3 seconds to activate. After 5 seconds, press again for 3 seconds to cancel.

### Unlocking mode alternatives



**Single-point entry.** Press once to unlock only the driver's door and the fuel filler flap. Press twice to unlock all the doors and the tailgate.

**Multi-point entry.** Press once to unlock all the doors, the fuel filler flap and the tailgate.

To change the mode - with the vehicle unlocked, press and hold the lock and unlock buttons simultaneously for 3 seconds. The hazard warning lamps will flash to confirm the change.

### Keyless entry

The Smart key needs only to be on the driver's person while using a door handle. It does not need to be exposed or handled.

### Operating note

The Smart key may not be detected if placed in a metallic container or behind a device with an LCD screen, such as a smart phone, laptop (including when inside a laptop bag), etc. Loose coins in the same pocket as the Smart key can also act as a shield. Keep the Smart key clear of such devices when attempting Keyless entry or Keyless starting.

## Powered and manual tailgates *See page 2, item 15.*

1. With the gear selector in **P**, press to release the tailgate. A powered tailgate will continue to open to the set height.

Alternatively, use the Smart key or press the internal release switch.

### To close the powered tailgate

2. Press and release the switch or press the Smart key tailgate button.

### Operating note

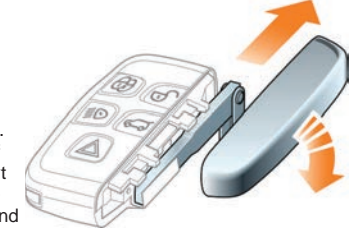
When the tailgate closes onto the locking latch, it will continue to 'soft close' to the fully closed position.

## Emergency key release

If the Smart key fails to work, the emergency key blade can be used. Slide the side section up to remove. Remove the keyblade and unfold it. Insert the blade into the slot under the driver's door lock cover. Gently prise off the cover. Insert the key into the exposed lock and turn to unlock.

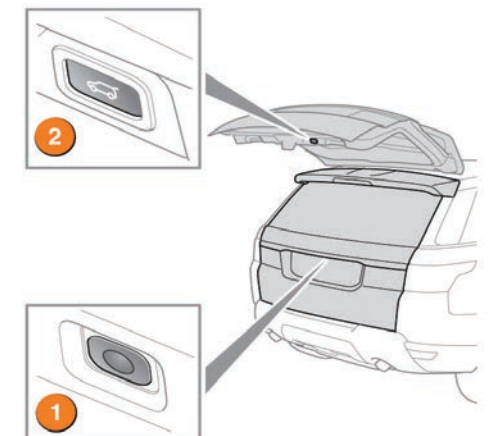
The alarm will sound.

To disarm the alarm, position the Smart key as shown below. Press the unlock button or press the **START/STOP** button with the Smart key inside the vehicle.



### Operating note

If the Smart key is not detected and the message **Smart Key Not Found** is displayed, hold it flat in the indicated position. Start the engine as normal. The Smart key can now be removed.



## Electric seat adjustment *See page 2, item 36.*

The front seats can be adjusted in up to 18 directions. The controls are located on the outer edge of the seat.

1. Bolster - deflate/inflate.
2. Lumbar support.
3. Seat upper back angle.
4. Seat back angle.
5. Head restraint height.
6. Seat height.
7. Forward and rearward position.
8. Cushion tilt.
9. Cushion length.

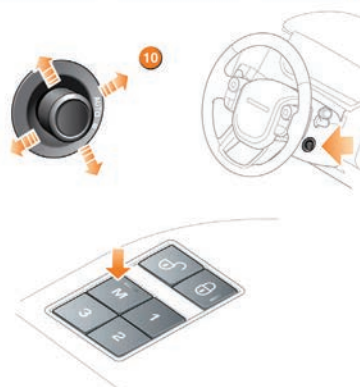
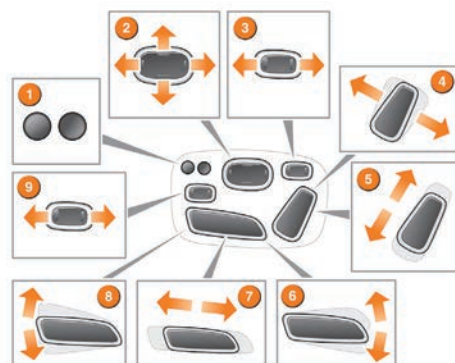
### Steering column

10. With the vehicle stationary, adjust the steering column to your ideal driving position.

### Memory settings

If seat memory is available, the driver's seat and exterior mirror positions can be saved for future use. Up to 3 sets of seat and mirror positions can be saved at any one time.

1. When the required positions have been achieved, press the **M** button on the door mounted control panel.
2. Within 5 seconds, press one of the store buttons, **1**, **2** or **3** to memorise the positions. A confirmation message will be displayed in the Message centre.
3. To recall a stored setting, press the relevant button.



### Operating note

Memory buttons **1**, **2** or **3** must be pressed within 5 seconds after pressing the **M** button, otherwise the memory store function will cancel.

## Seat belts and child safety *See page 2, item 38.*



A warning indicator in the Instrument panel will illuminate if the driver's seat belt is unbuckled. This may be accompanied by an intermittent chime. The Message centre also displays a graphic reminder of seating positions and seat belt use. A tick indicates a fastened seat belt.

### Child door and rear window locks

If children are to be carried in the rear seat positions, the rear door interior handles can be disabled.

Press the switch to activate the child door locks and isolate the rear windows. The switch LED indicator will illuminate and a message will display in the Message centre.

Press again to switch off. The LED will extinguish and a

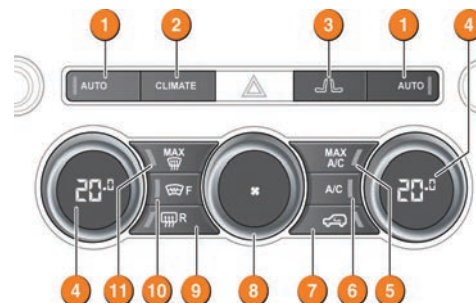
message will display in the Message centre.

### Child seats

It is the weight of a child, rather than age, that determines the type of seat required.

Refer to **Child safety** in the Owner's Handbook to determine the correct seat for your child.

## Climate control *See page 2, item 33.*



**AUTO** is the recommended operating mode. This will help to prevent misting.

1. **AUTO mode.** For fully automatic operation.
2. **CLIMATE.** To display the climate control menu.
3. Front heated/climate seat menu.
4. **Temperature controls.** For individual driver/passenger settings.

*Note: The system allows temperature differential of up to 4°C (7°F) between left and right passenger areas.*

5. **MAX A/C.** Maximum air conditioning program.
6. **A/C.** For cooled and dehumidified air. Press to switch air conditioning off/on.
7. **Air recirculation.** Press for timed recirculation. Press and hold for continuous recirculation. To cancel recirculation, press the button again.

*Note: Prolonged use at low temperatures may cause the windows to mist.*

8. **Blower speed control.** Rotate to adjust airflow from the facia vents. To switch off climate control, rotate fully counter-clockwise then turn counter-clockwise again.

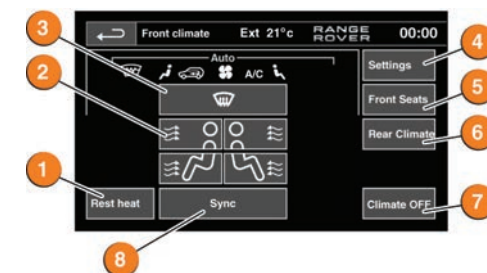
9. **Heated rear screen.**

10. **Heated front screen.**

11. **Maximum defrost.** Fastest method to remove frost or heavy misting from the front screen.

### Touch screen controls

To access the Touch screen control, touch **CLIMATE** on the climate control panel.



1. With the engine switched off, press to operate. Uses the residual engine heat to provide cabin heating.

2. Air distribution.

*Note: More than one setting may be selected at a time to achieve the desired distribution.*

3. Distributes air to windscreen.
4. Climate control settings menu.
5. Front heated/climate seat menu.
6. Rear climate menu.
7. Climate control system on/off.
8. Synchronises all climate zones to the driver's settings.

### Operating note

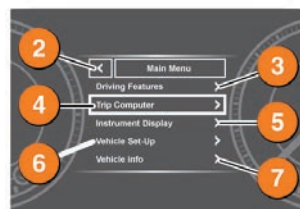
Seat heating and ventilating will operate only while the engine is running. This is to prevent the vehicle battery becoming discharged.

## Instrument panel menu *See page 2, item 11 and 12.*

A number of vehicle features and display settings may be configured via the Instrument panel menu.

To display and navigate through the menu, operate the menu control on the steering wheel.

1. Steering wheel menu control.
2. Close or return to the **Main Menu**. With analogue instruments, **Close Menu** should be selected.
3. Access the vehicle **Driving Features** menu.
4. Access the **Trip Computer** menu.
5. Access the **Instrument Display** menu.
6. Access the **Vehicle Set-Up** menu.
7. Access the **Vehicle Info** menu. Only available before the engine is started.



## Exterior lamps *See page 2, item 10.*



**1. Outer collar.** Rotate to the first position for side lamps, second position for headlamps, third position for **AUTO**. With **AUTO** selected, all exterior lamps will switch on automatically when ambient light fades.

**2. Inner collar.** Turn it away and release for front fog lamps. Turn it towards you and release for rear fog lamps. Turn and release again for off.

**Headlamps high beam.** Push the control forwards for high beam. To flash the headlamps, pull back and release.

**High beam assist.** Active when set in the Instrument panel menu, **AUTO** is selected and low beams are in use. High beam will automatically activate when the sensor detects no light or very low light source ahead. Low beam will be automatically selected when appropriate.

### Operating note

When driving abroad, there is no need to adjust the headlamp beam position. High beam assist must be adjusted via the Message centre. In **Vehicle Set-Up**, select the appropriate side of road driving option.

## Wipers and washers *See page 2, item 14.*

1. Automatic rain sensing. Front wipers will respond to rain severity.
2. Rotate towards **MAX** to increase sensitivity of Automatic rain sensing.
3. Low speed continuous wipe.
4. High speed continuous wipe.
5. Windscreen single wipe.
6. Windscreen wash/wipe.
7. Rear wiper. Rotate to **INT** for intermittent wipe. Frequency increases with vehicle speed. Rotate to **ON** for continuous.
8. Rear wash/wipe. Continue to hold for additional operation.



### Prevent inadvertent wiper activation.

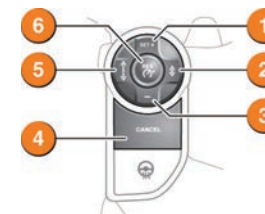
Before entering a car wash, and also during long dry periods, turn Automatic rain sensing off.

To lift wipers from the windscreen, see **Winter Park Position** in the Owner's Handbook.

## Adaptive cruise control *See page 2, item 13.*

The Adaptive cruise control (ACC) system is designed to maintain a gap to the vehicle ahead, or a set road speed if there is no slower vehicle ahead. A speed may be set between 20 mph (32 km/h) and 124 mph (200 km/h).

1. Press to increase or set the speed.
2. Press to decrease the Follow mode gap.
3. Press to decrease the set speed.
4. Cancel Cruise control. Set speed is retained in the memory.
5. Press to increase the Follow mode gap.
6. Press to resume the previous set speed retained in the memory. A set speed is cleared at ignition off.



## Intelligent stop/start *See page 2, item 26*

Intelligent stop/start will become active as soon as the ignition is turned on.



When the vehicle comes to a stop and the brake is applied or **N** is selected, the engine will turn off automatically (unless it is required to support other vehicle systems). A green **ECO** icon will illuminate in the Message centre.

When the accelerator pedal is pressed, or the brake is released and **D** is selected, the engine will restart.

To switch off, press the Intelligent stop/start switch. An **ECO** message will be displayed momentarily in the Message centre.

Intelligent stop/start is not available while a Terrain response program is active.



## Panoramic roof and blind

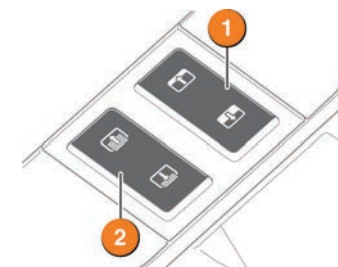
1. To tilt the roof, press the overhead switch briefly at the rear. Once tilted, briefly press again to open the roof.

To close from the fully open position to the tilt position, briefly press the front of the switch, and then press again to close fully.

For 1 touch open and close, press the switch firmly and release.

2. To open the blind, press the overhead switch briefly at the rear.

To close the blind, briefly press the front of the switch.





## Terrain response *See page 2, item 31.*

**Automatic mode** - Automatically determines and applies the most appropriate program for the conditions. If the rotary selector is in the elevated position, depress the selector to engage automatic mode.



Manual program selection is via the rotary selector. Icons will illuminate as selected. The Message centre will also display an icon. Information about program suitability can be viewed on the Touch screen via the **Extra features** soft key.

### Wading

Select the program most suitable for the surface beneath the water. DO NOT exceed a water depth of 850 mm (33.4 in) and enter the water with a shallow approach angle. For further information, see **Wade sensing** in the Owner's handbook.

## Powered tow bar

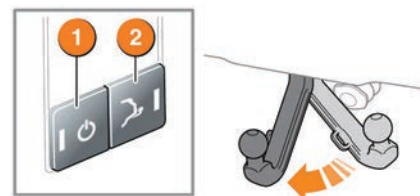
The powered tow bar is hidden in its stowed position behind the bumper. It can be deployed using the buttons on the right side of the loadspace.

Before activating the tow bar, the ignition must be switched off. Always check for obstructions to the tow bar.

1. Press the tow bar on/off button.
2. The green LED should now be illuminated. Press and release the deploy/stow button. The tow bar will move into position.

During movement, a series of long warning beeps will sound, also the green LED will flash. Full deployment is confirmed with a short double beep and the LED will extinguish.

To stow the tow bar, repeat the above procedure.



### Operating note

To stop movement of the tow bar, press either button during deployment.

If an obstruction is met while deploying, movement will stop and a long tone will sound. Press button **2** to reverse movement.



**General** - Use for typical road surfaces.



**Grass-Gravel-Snow** - For surfaces which are firm but have a slippery surface, e.g., grass, snow, loose gravel, pebbles or icy conditions.



**Mud-Ruts** - Suitable for soft, muddy, uneven or rutted ground.



**Sand** - Suitable for soft, predominantly dry, yielding sandy ground, e.g., sand dunes and deserts. If the sand is damp or wet, the Mud-Ruts program may be more beneficial.



**Rock Crawl** - Only selectable when in LOW range. Suitable for crossing wet or dry, solid unyielding ground requiring high levels of wheel displacement, e.g., clusters of boulders or rocky river beds.

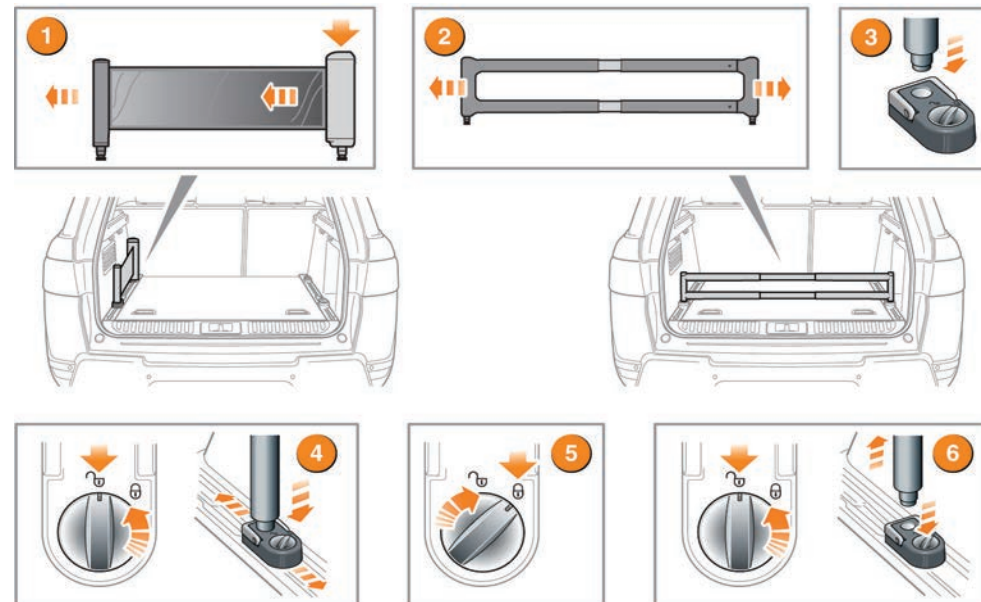


**Dynamic** - Associated with a driving style rather than a type of terrain. Dynamic mode will optimise traction, handling and driveability for maximum feedback and responsiveness while on hard surface roads.

## Luggage and stowage

A luggage retention kit is provided to assist with safely securing items of luggage to the loadspace floor.

Floor mounted luggage rails provide a full width mounting channel that will accommodate either a flexible retracting band or a solid telescopic barrier, to retain luggage of all shapes and sizes.



1. Press and hold while pulling out the luggage retaining band and adjust to the required length.
2. Adjust the divider to the required length.
3. Unlock a required lashing eye, attach the luggage retaining band or divider to the lashing eye.
4. With the lashing eye in the unlocked position, press the button and slide to the required position in the luggage rail.
5. Lock the lashing eye to secure in position.
6. To remove a luggage retaining band/divider from a lashing eye, unlock the lashing eye. Press the lock/unlock button and pull up to release.

*Note: The luggage retaining band should be used only at the sides along the length of the luggage rail.*

## Blind spot monitoring (BSM)

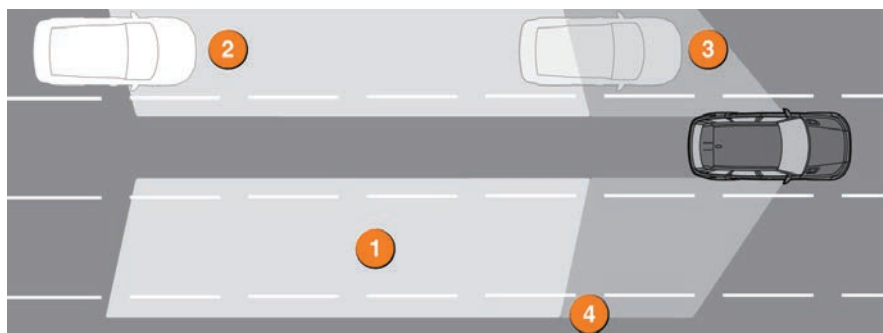
While a forward gear is selected and the speed is above 6 mph (10 km/h), BSM will detect a vehicle approaching from behind, on either side, within its scanned range. Detection range is approximately 6 m (20 ft) to the rear and 2.5 m (8.2 ft) to the sides.

1. An amber icon, depicting an approaching vehicle, will illuminate in the relevant door mirror.
2. An amber dot will illuminate at speeds below 6 mph (10 km/h). BSM is active only when the amber dot is extinguished.



## Closing vehicle detection

1. Closing vehicle detection monitors up to 70 m (230 ft) behind the vehicle.
2. If a rapidly approaching vehicle is detected, the amber warning icon will flash in the relevant door mirror to indicate a potential hazard. Warning icons in both mirrors will flash if rapidly approaching vehicles are detected on both sides.
3. When the detected vehicle reaches the area monitored by the Blind spot monitor, the amber warning icon in the mirror will illuminate continuously.



### Operating note

The system monitors fixed lane widths on both sides. If the lanes are narrower than usual, and there are more than 2 lanes on either side, vehicles travelling in the further lane 4 may also be detected.

## Reverse traffic detection

The Reverse traffic detection system provides a warning of any moving vehicle that may pose an accident risk during a reversing manoeuvre.

An amber icon will flash in the relevant door mirror, to indicate the presence of a moving vehicle.

The Rear camera screen 1 or the Parking aid screen 2 will also show a warning on the relevant side(s) of the screen.

To switch between views, touch the Rear camera screen or the Rear Camera icon accordingly.



### Operating note

Reverse traffic detection is automatically disabled when a trailer is connected.

## Parking aids

Front and rear Parking aids are activated when transmission **R** is selected. When a forward gear is subsequently selected, the Parking aids system will remain active until the vehicle's forward speed exceeds 10 mph (16 km/h).

If an obstruction is detected, an intermittent tone will sound. Moving closer to the obstruction will increase the frequency of the tone.

Press the switch to deactivate.

The switch will illuminate. Press again to activate.



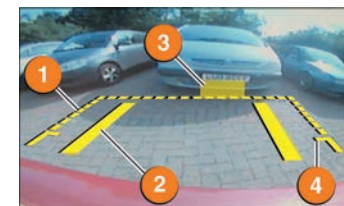
### Rear camera

When transmission **R** is selected, the camera provides a rear-view image with overlaid guidelines, to assist while reversing.

To view the Parking aids display instead, or to cancel the camera display at any time, press the **Home menu** button, or touch the back soft key.

To adjust the camera settings while in reverse, touch anywhere on the Touch screen to display the user options.

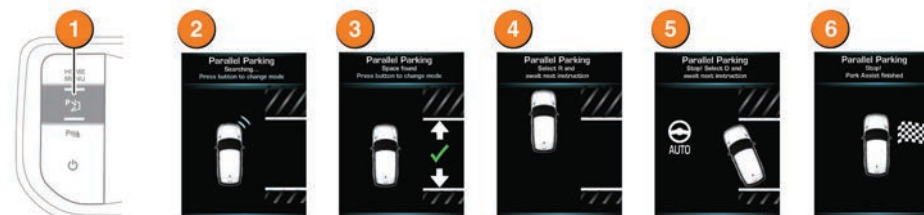
1. Broken line - full width of the vehicle.
2. Solid line - projected reversing path based on the current steering wheel position.
3. Parking sensor activation - shaded area indicates which rear sensors are active.



4. Tailgate access guideline - do not reverse beyond this point if tailgate access is required.
5. Touch to enable/disable graphics and guidance lines.
6. Hitch guidance. Designed to aid the process of guiding the vehicle to the trailer tow hitch, a single line is displayed as the reversing guideline.

## Park assist

Park assist can help when parallel parking. When the system sensors identify a suitable space, the vehicle will be steered automatically into place while the driver operates the accelerator and brake. The driver does not steer the vehicle. Park assist can also aid when using a parking bay and when exiting from a parked position.



*Note: The Park assist auto searching feature becomes active when the vehicle speed is less than 18 mph (30 km/h). When Park assist is activated, a previous space may already have been located. To obtain a previous space on the other side, signal a turn in that direction.*

While searching for a parallel parking space:

1. Press once to activate while driving forwards.
2. Park assist searches for a space on the side of the front passenger unless the direction indicator has been used to select the driver's side. The Park assist message appears in the Message centre.
3. As you drive forward, potential spaces are assessed. A short confirmation tone sounds when a suitable space is found and a message is displayed.

4. Park assist will instruct to stop or to drive forward to a starting point, and when to select transmission **R**.

5. Park assist will then take control of the vehicle's steering system. Release the steering wheel and apply the accelerator carefully, to move the vehicle slowly into the space. Use the footbrake to stop, when instructed by Park assist.

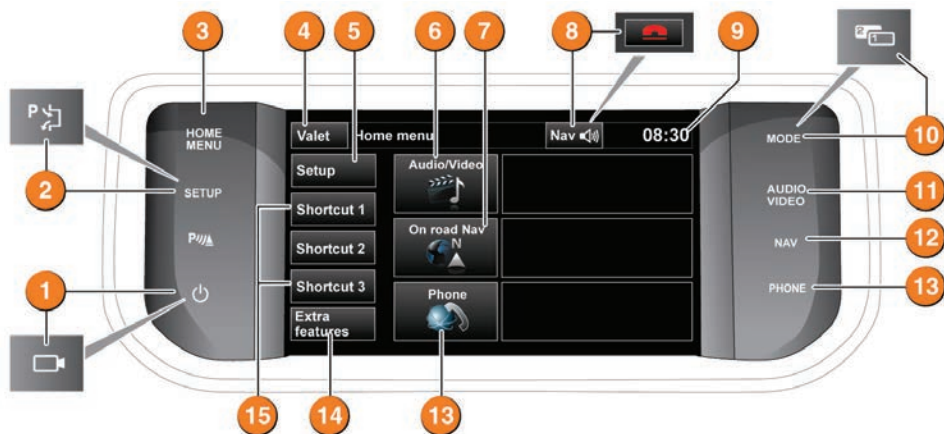
Further manoeuvring may be required. Follow instructions in the Message centre.

6. When the manoeuvre is complete, **STOP!** will be displayed.

For instructions on Perpendicular parking and Parking exit, see the Owner's Handbook.

## Touch screen Home menu

The Touch screen requires only light touches. Excess pressure could result in damage.



1. **Screen on/off:** Each time the ignition is turned on and this button is pressed, the **Home menu** will be displayed. If the ignition remains on and the Touch screen is turned off and later turned on again, the last used screen or menu will be displayed. When proximity cameras are fitted, this icon is changed and the button will turn cameras on and off.

2. **SETUP.** Touch screen **Setup** menu. When Park assist is specified, this button will turn Park assist on and off. The **Setup** menu is then accessed via the Touch screen.

3. **HOME MENU.** Content will depend upon vehicle specification and the options selected.

4. **Valet mode.** Locks the luggage areas and prevents access to the Touch screen when allowing others, e.g., a parking attendant, to take charge of your vehicle. You will have to enter a 4 digit code of your choice. When you re-enter the vehicle, use the code to unlock this security feature. During menu mode, the icon changes to the Back soft key. Touch to return to the previous screen.

5. **Setup** menu.

6. **Audio/Video** menu. An overview of current audio/video information is displayed.

7. **On road Navigation** menu. The current set destination is displayed.

8. Touch to repeat the last navigation voice instruction. During a phone call, the icon is temporarily changed to indicate a call is in progress. Touch to end the call.

9. Touch to adjust the time or date.

10. **MODE.** Press repeatedly to scroll through available audio/video sources. When Dual view is fitted, the button icon is changed. The button should then be pressed to access the Dual view screen display.

11. **AUDIO VIDEO** menu. Press to select.

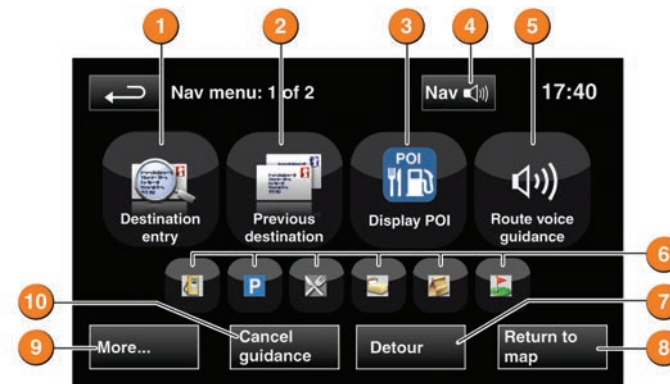
12. **NAV.** Press to select the Nav menu 1 of 2.

13. **PHONE** menu. Press to select.

14. **Extra features.** There are more features available than can be displayed at one time, e.g., Ambient lighting, Cameras and Timed climate. Touch to display the feature list then use the forward and back soft keys to progress through it.

15. **Shortcut keys.** Use for personal shortcuts to any part of the system. Shortcuts can be made in the **Setup** menu. Items in the **Extra features** list can be set as a shortcut. The shortcut soft keys can be changed at any time.

## Nav menu



1. Use to enter a new destination. Provides a choice of options when entering a destination.

2. Displays previous destinations entered. Previous destinations can be selected.

3. Turns the POI (Point of interest) icons on the map on/off.

4. Only visible when a destination is set. Enables the last voice instruction to be repeated.

5. Highlighted while Route voice guidance is enabled. Touch to turn Route voice guidance off.

6. POI shortcuts: Touch icon to list available POIs that are close to the vehicle position.

7. Calculates a detour from the current route.

8. Advances to the main map screen.

9. Move to the other Navigation menu. There are 2 navigation menu screens. On the second screen:

**Stored locations** is used to manage the stored data. **TMC** (Traffic message channel) will provide data about road conditions and any events ahead that may affect the current route.

**Route options** allows the selection of various options for the route.

**Nav set-up** is for setting personal preferences within the Navigation system. Use the **More...** soft key to toggle between them.

10. Cancel current route guidance.

### Selecting navigation

When navigation is selected after the ignition is turned on, a caution screen is displayed. Touch **Agree**.

*Note: At the first time of accessing the caution screen, set the required language.*

### Setting a destination

Select **Destination entry**.

Select **Address** and enter address details using the keyboard. As each part of the address is refined, touch **OK** or **List** to display all of the streets and towns that are available to be selected. If the house number is not known, press **OK**, the end of the road is then used as the destination.

When the map screen is displayed, you have the option to **Review route** or **GO**. Touch **GO** to calculate the quick route and start guidance.

### Review route.

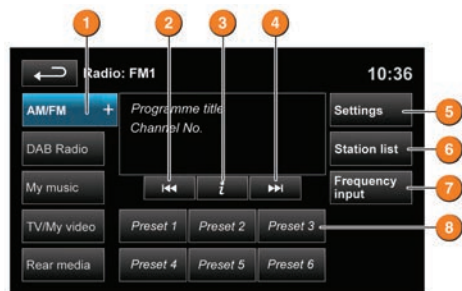
There will be a choice of **3 Routes** or **Change route**.

**3 Routes** will display 3 different route options on the map. Select **Route 1**, **2** or **3** by touching the respective box displayed on the right side of the map and then select **GO**.

Alternatively, select **Change route** and then **Route preferences** to alter the route settings. When changes are complete, touch **GO**.



## Radio

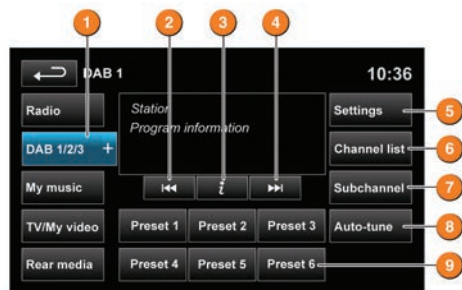


1. Touch to view and select a waveband.
2. Seek down: Short touch to auto seek down to the next radio station. Long touch to activate manual seek mode.
3. Information from the current station.

## DAB radio

Digital radio channels are arranged into groups called ensembles. Each digital channel may also have associated subchannels.

*Note: Subchannels are temporary channels and may be discontinued at any time.*



1. Touch to view and select a DAB band (DAB 1, 2 or 3). The radio will tune to the last used channel on that band. Touch again to close.
2. Seek down: Short touch to seek the previous available channel. Long touch to seek the previous available ensemble. The first channel in the new ensemble will be selected.
3. Touch to view DAB text and channel information.
4. Seek up: Short touch to seek the next available channel. Long touch to seek the next available ensemble. The first channel in the new ensemble will be selected.

4. Seek up: Short touch to auto seek up to the next radio station. Long touch to activate manual seek mode.
5. Touch to view and activate/deactivate: **RDS**, **Traffic**, **News**, **AF** and **REG**.
6. Touch to view a list of available stations on the FM waveband.
7. Touch to enter a station frequency on the current waveband, using the numeric keypad. Select **OK** or wait for automatic tuning.
8. Station presets: Touch and release a preset to tune to the station stored on that preset. Touch and hold to store the current station to that preset.

5. Touch to view:  
**Options:** activate/deactivate **FM Traffic** and **Link DAB** and to alter **DAB country** and **DAB format** settings (with the vehicle stationary).  
**Announcements:** select an alarm announcement and up to 3 other announcement types from the list. Selected types will interrupt the current programme, when broadcast.

6. Touch to view a list of available ensembles and channels. The list can be sorted by **Ensemble**, **Channel**, **Subchannel**, or by **Category**. If an ensemble is selected from the list, all available channels from that ensemble will be displayed. Sorting by **Subchannel** is only available when the current channel is broadcasting subchannels. If **Category** is selected, touch the chosen category to view corresponding channels, before making your selection from the list.

7. If subchannels are broadcast by the current channel, **Subchannel** will be active. Touch and then select the required subchannel with the seek soft keys.

8. Select to scan for all available DAB ensembles/channels. This needs to be done before using the DAB radio for the first time. **Auto-tune** is also useful when travelling long distances, so regional ensembles can be tuned.

9. Station presets: Touch and release a preset to tune to the station stored on that preset. Touch and hold to store the current station to that preset.

*Note: If you attempt to select a preset channel that is now unavailable or invalid, **No reception** is displayed.*

## Portable media



Includes CD, iPod®, USB, AUX and **Bluetooth**® wireless technology devices. The full infotainment system also includes Stored CD.

1. Touch to display all of the options. Select an option.

*Note: Sound quality and volume levels available from devices connected to the auxiliary input may vary widely.*

2. Touch to switch traffic and news on or off. Additionally, for MP3 recorded media, you can select the number of list entries that are skipped when you use the page up/down arrows.

3. Touch to view the current CD or Stored CD track list. Select a track to start playback.

4. Touch to view contents of the connected device and start playback.

5. Touch to view and manage the Stored CD memory.

- Select **Upload** alongside an empty slot to upload a CD. There are 10 slots available.
- Select **Replace** to overwrite an existing CD.

*Note: Loading time is dependent on content type. Other features can be selected while upload is in progress.*

6. Skip/Scan forwards.

7. **Repeat**  
In CD mode:

- Touch to repeat the current track continuously. Touch again to repeat the current Stored CD (or folder for MP3 discs) continuously until **Repeat** mode is cancelled. Touch again to cancel.

In USB or iPod mode:

- Touch to repeat the current track continuously. Touch again to repeat the current USB folder or to cancel iPod **Repeat** mode. Touch again to cancel USB **Repeat** mode.

*Note: Repeat mode is not available for Bluetooth wireless technology devices.*

8. Pause/Play: Select to pause playback. Select again to resume playback.

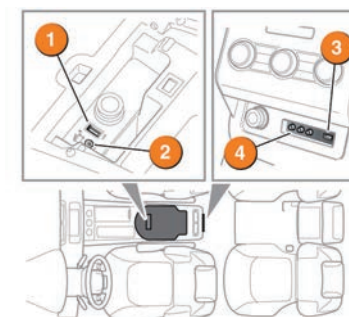
9. Information about the current track.

10. Touch to play random tracks from the current source. Touch again to cancel.

*Note: Shuffle mode is not available for Bluetooth wireless technology devices.*

11. Skip/Scan backwards.

## Connecting a device



1. USB/iPod sockets.
2. 3.5 mm AUX socket.
3. Rear media USB/iPod socket.
4. Rear media AV sockets.

Steering wheel audio control *See page 2, item 11.*

Audio system selections can also be made from the steering wheel control.



1. Volume increase.
2. Seek up.
3. Volume decrease.
4. Press repeatedly for options.
5. Seek down.



## Telephone

### Bluetooth® wireless technology device compatibility

For the latest list of compatible phones and their software, refer to [www.landrover.com](http://www.landrover.com). Select **OWNERS** and then **Bluetooth**.

*Note: The process of pairing and connecting a phone to the vehicle will vary depending on the type of phone used. Use the manufacturer's instructions.*

### Pairing and connecting using the phone

1. Switch the ignition on and make sure that the Touch screen is active.
2. From the **Home menu**, select **Phone**.
3. A menu will appear. If no phone is connected, select **Search new** otherwise, select **Change phone** and then select **Search new**.
4. Select the **Device to vehicle** option.

*Note: The vehicle's Bluetooth wireless technology system is discoverable for only 3 minutes.*

5. Using the phone, search for Bluetooth wireless technology devices. On some phones, this is referred to as new paired device. See the manufacturer's instructions.
6. When the vehicle's system is discovered, begin the pairing process and follow the on-screen instructions.
7. When requested, enter a PIN of your choice into the phone and the vehicle's system.
8. Once your phone is paired it may automatically connect to the vehicle's system. If not, use the device list shown on the Touch screen or use the phone.

*Note: Some phones require the pairing to be set as 'authorised' or 'trusted' in order to automatically connect. Please refer to your phone's operating instructions for further information.*

### Downloading phonebook entries

When a phone with phonebook download capability is paired and docked, its phonebook directory can be automatically downloaded to the vehicle's system.

See **PHONEBOOK** in the Owner's Handbook for more information.

### Calls via the Touch screen



With a paired and active phone press the **PHONE** button on the Touch screen surround.

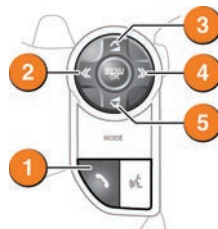
1. Select **Digit dial**, **Phonebook** or **Last 10**. With **Digit dial** selected, use the keypad to enter the number. With **Phonebook** selected, choose a number from the downloaded phonebook. **Last 10** displays the previous 10 calls. Choose one to dial.

2. Touch the  to make the call.

3. The icon will change to . Touch the icon to end a call.

### Calls via the steering wheel controls

See page 2, item 11.



1. Press to answer a call. Press to end a call. Press and release to dial a number/contact. Press and release to access the **Last 10** dialled list. Press and hold to access the **Phonebook**.
2. Press to scroll back through received calls, the **Last 10** list and to exit the list.
3. Press to increase the volume when in a call or scroll up through a displayed list.
4. Press to scroll to received calls, **Last 10** list.
5. Decrease the volume when in a call or scroll down a displayed list.