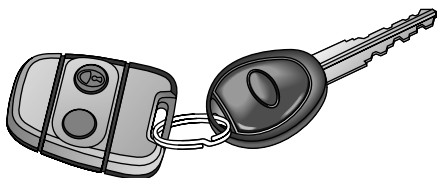


Locks & Alarm

KEYS AND HANDSETS



H3519A

You have been supplied with a pair of identical keys and two remote control handsets.

Keep the spare key in a safe place - NOT IN THE VEHICLE!

The keys supplied with your vehicle are programmed to the vehicle's security system - they CANNOT be reprogrammed and the engine cannot be started without a valid programmed key. If a key is lost or broken, a replacement can be ordered only from a Land Rover retailer.

NOTE: *Land Rover retailers do not stock spare keys, time has to be allowed for replacements to be programmed to your security system and then delivered to the retailer.*

If you lose a key, contact your Land Rover retailer; a key reported lost will be deactivated. If the key is later recovered, your Land Rover retailer can have it reactivated.

IMPORTANT INFORMATION

The handset complies with part 15 of the FCC rules. Operation is subject to the following conditions:

- This device may not cause harmful interference.
- This device must accept any interference received, including interference that may cause undesired operation. This applies to both alarm receivers and transmitters.

Any changes or modifications to the handset not expressly approved by the manufacturer or Land Rover North America, could void the user's authority to operate the equipment.

ALARM SYSTEM

Your vehicle is fitted with a sophisticated electronic anti-theft alarm and engine immobilisation system. In order to ensure maximum security and minimum inconvenience, you are strongly advised to gain a full understanding of the alarm system, by thoroughly reading this section of the handbook.

Locks & Alarm

LOCKING THE VEHICLE AND ARMING THE ALARM

Before locking the vehicle and arming the alarm, ensure that all doors (including taildoor), windows, sunroof and bonnet apertures are securely closed.

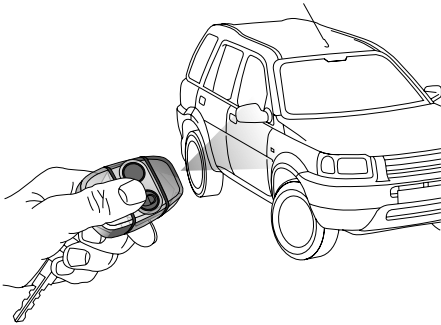
There are three methods for securing your vehicle:

- 'Superlocking' using the handset - (recommended high security method).
- 'Superlocking' using the key.
- Locking using the key.

IMPORTANT INFORMATION

- FOR MAXIMUM SECURITY ALWAYS SUPERLOCK THE VEHICLE USING THE REMOTE HANDSET

Using the remote handset



H3297

While it is not necessary to point the handset at the vehicle, the handset must be within range of the vehicle when a button is pressed. Note that the operating range may vary depending upon handset battery condition and may sometimes be limited by physical and geographical factors beyond your control. From a security point of view, it may not be wise to unlock unless you are within a few feet of the vehicle.

Locking

With the remote handset:

Press the lock (padlock symbol) button once. Each time the vehicle is locked using the handset, a coded signal is transmitted to a receiver inside the vehicle, which activates the following security features:

- the central door locking system (all the door locks are activated).
- the perimetric alarm (protects the door, taildoor, and bonnet apertures).

Pressing the lock (padlock symbol) a second time within one second of the first action activates:

- 'Superlocking' - the door locks cannot be operated from inside the vehicle.

With both levels of locking, if the doors lock correctly, the direction indicator lights flash three times to confirm that the vehicle is secure and the anti-theft alarm indicator light (in the instrument panel) will start to flash rapidly.

Once armed, the alarm will sound if any door is opened.

With the key:

Insert the key and turn the door lock clockwise. Turning the key ONCE activates the following:

- all doors locked (not superlocked)
- perimetric alarm activated (protects the doors, bonnet and taildoor)

Turning the key TWICE within 1 second activates, in addition to the above:

- Superlocking

If the doors lock correctly, the direction indicators flash three times to confirm that the vehicle is secure and the anti-theft alarm indicator light (in the instrument panel) will start to flash rapidly.

Locks & Alarm

NOTE: *The engine will automatically be immobilised 3 seconds after the starter switch is turned off, and immediately when the starter key is removed from the switch.*

Superlocking

Provided all the doors are fully closed, the Superlocking feature is activated automatically whenever the vehicle is locked by pressing the padlock symbol on the remote handset twice within one second. Superlocking immobilises the interior door handles, thereby preventing an intruder from gaining entry by smashing a window and reaching inside the vehicle to operate the door handles.

WARNING

For safety, NEVER use Superlocking if passengers are to remain inside the vehicle - in an emergency they would not be able to escape.

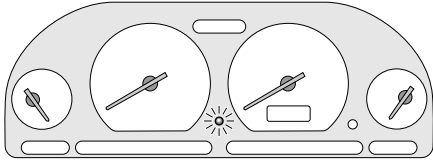
Mislock

If one of the doors, taildoor or bonnet is not properly closed when the alarm is armed, a mislock occurs (the horn will sound a warning). The alarm will still be armed and the engine immobilised, but the open aperture will not be protected. If the appropriate aperture is then closed, the alarm will fully arm without the need to press the lock button again unless the driver's door is open, in which case the alarm will be fully armed by pressing the lock button again.

If the taildoor glass is left open when the alarm is armed, the horn will sound as a reminder, but the vehicle will be locked and alarmed as normal. The taildoor glass can be closed from outside the vehicle using the starter key in the taildoor (see '*Raising and lowering*', page 60).

Locks & Alarm

Anti-theft alarm indicator light



H3298

After locking, the RED indicator light on the instrument panel flashes rapidly while the alarm is arming itself.

After approximately 10 seconds, the indicator light adjusts to a slower frequency, and continues to flash as an anti-theft deterrent until the alarm is disarmed.

Unlocking

With the remote handset:

If your vehicle is configured with the Single Point Entry security feature, and was locked with the handset, the handset unlocks the vehicle in two stages:

- Press the unlock (Land Rover) button once to disarm the alarm and unlock the driver's door only (see 'Single point entry', page 24).
- Press the unlock button twice to disarm the alarm and unlock ALL the doors.

If your vehicle is not configured with Single Point Entry, all the doors will unlock at the first press.

In either case, the direction indicators flash once and the interior lights illuminate.

With the key:

Turn the key towards the front of the vehicle. The alarm will be fully disarmed. To remobilise the engine, the key must be inserted into the starter switch.

If the alarm sounds

If the alarm is triggered, it will sound for approximately 30 seconds before switching itself off and can be triggered up to ten times in total before needing to be reset.

To silence the alarm, press either handset button, or operate the door locks using the key in the driver's door.

Single point entry

This is a personal security feature, which enables the driver's door only to be unlocked, leaving the other doors in a locked state. It can be operated by the remote handset as follows:

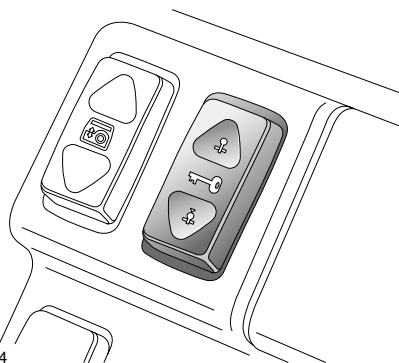
Press the unlock button once to unlock the driver's door, press a second time to unlock the remaining doors and taildoor.



Single point entry can be configured by a Land Rover retailer.

Locks & Alarm

Interior locking switch



This is a personal security feature which allows the driver to lock (or unlock) all the doors from inside the vehicle (while driving or with the vehicle stationary). Press the lower part of the switch to lock (the alarm will not be armed), and the upper part to unlock.

NOTE: *If interior locking has been activated, pull the interior door handle once to unlock, and twice to open the door.*

Door handles and door sill locking buttons

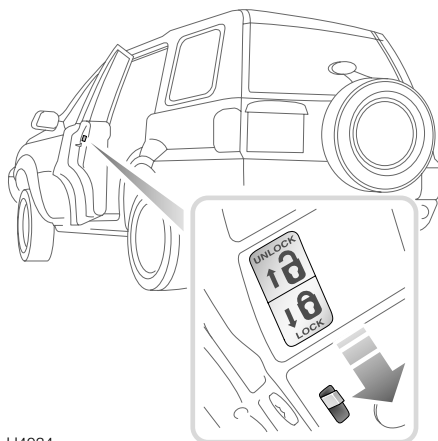
From inside the vehicle, each door can be individually locked by depressing the appropriate door sill button. However, doors cannot be unlocked by raising the sill button.

Use the door handles to unlock, as follows:

- First operation of the door handle unlocks the door.
- Second operation of the door handle opens the door.

NOTE: *The door handles will not open the doors if the vehicle has been superlocked (see 'Superlocking', page 23)*

CHILD-PROOF LOCKS



Move the lever on the rear doors down (see inset) to engage.

With the child-proof locks engaged, the rear doors cannot be opened from inside the vehicle, thereby avoiding the risk of a door being opened accidentally while the vehicle is moving.

WARNING

To avoid injury or even death, NEVER leave children unsupervised in the vehicle.

Locks & Alarm

ENGINE IMMOBILISATION

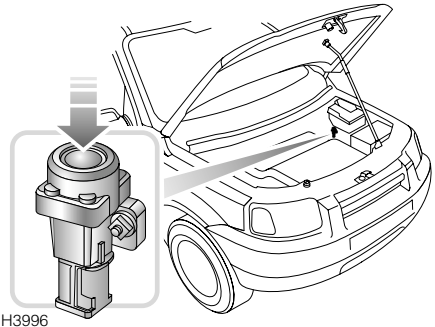
Engine immobilisation is an important aspect of the security system and is designed to safeguard the vehicle from theft, should the driver forget to lock the doors. Engine immobilisation prevents the engine from being started unless a valid key is inserted into the starter switch, and occurs automatically whenever any of the following conditions occur:

- Three seconds after the starter switch has been turned off.
- As soon as the key is removed from the starter switch.

The engine is re-mobilised by a signal transmitted from a transponder contained within the key head, to the starter switch. This occurs automatically whenever a valid key is inserted into the starter switch and turned to position 'I'.

CAUTION: DO NOT keep more than one starter key, or keys from other vehicles, or gas station speed payment devices on the same key ring: the engine will not re-mobilise automatically.

DOOR LOCKING CUT-OFF SWITCH



An inertia switch, which operates when the starter switch is in position 'II', prevents the doors from centrally locking (or, if the doors are already locked, unlocks them) in the event of an accident or sudden impact. If this occurs, central locking will be inhibited until either:

- the starter switch is turned off and the driver's door has been opened and closed, or:
- the driver's door has been opened and closed, and the inertia switch is reset.

The inertia switch is located inside the engine compartment on the left hand side, beneath, and to the rear of, the engine compartment fuse box (a label attached to the bulkhead will assist in locating the switch). The switch must be reset before the engine can be restarted. Reset the switch by pressing the rubber top (arrowed in illustration).

This will also reset the fuel system, see 'FUEL CUT-OFF SWITCH', page 86).

WARNING

ALWAYS check for fuel leaks before resetting the switch! Activating the switch when the fuel system has been damaged (evidenced by fuel leakage or odor) will cause additional fuel leakage increasing the risk of fire.

Locks & Alarm

REMOTE HANDSET

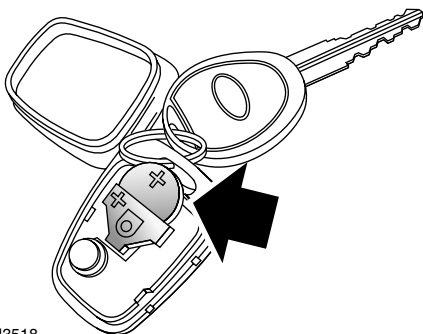
CAUTION: The handset contains delicate electronic circuits and must be protected from impact and water damage, high temperatures and humidity, direct sunlight and the effects of solvents, waxes and abrasive cleaners.

The battery should last for approximately three years dependent upon use. When the battery needs replacing it will be apparent from the following symptoms:

- A gradual deterioration in range and performance.
- The alarm buzzer and the anti-theft alarm indicator light will double bleep/flash every second, for ten seconds, after the alarm is disarmed and driver's door opened.

It is recommended that you fit a Land Rover STC 4080 or a Panasonic CR2032 replacement battery (available from a Land Rover retailer).

Battery replacement



H3518

1. Carefully prise the handset apart, start from the keyring end using a small coin or screwdriver. Avoid damaging the seal between the two halves of the case and DO NOT allow dirt or moisture to get inside the handset.
2. Slide the battery out of its clip, taking care to avoid touching the circuit board or the contact surfaces of the clip.

3. Press and hold each button in turn for at least five seconds (this will drain any residual power from the handset).
4. Fit the new battery, ensuring that correct polarity is maintained ('+' side facing up). Finger marks will adversely affect battery life; if possible, avoid touching the flat surfaces of the battery and wipe them clean before fitting.
5. Press the two halves of the handset firmly together and ensure that both halves are fully joined to prevent dirt or moisture from entering the handset.
6. Resynchronise the handset.

The handset is now ready for use.

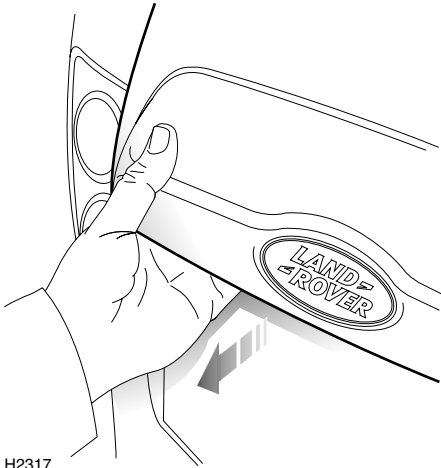
Handset resynchronisation

If the handset fails to lock or unlock the car, this may be because the coded signal transmitted by the handset, and the signal expected by the alarm control unit are no longer synchronised.

To resynchronise the handset, operate either button of the handset at least five times in quick succession (in close proximity to the vehicle).

Taildoor

OPENING AND CLOSING



H2317

Opening the taildoor

When the release catch is pulled (as shown in illustration), the taildoor lock is released in two phases:

1. the taildoor glass drops clear of its retaining channel.
2. the electronic door latch is released and the door can be opened.

Initially, the door opens approximately half way until resistance is felt; this prevents the door swinging fully open and possibly hitting an obstruction, yet still enables access in a situation where there is not enough room to open the door fully. Push, against resistance, to open the door fully.

NOTE: The taildoor latch will not operate if the glass is frozen to the door seals, as the glass needs to drop slightly before the door can be opened. Defrost the glass first.

WARNING

You are advised NOT to carry loads which require driving with the taildoor or taildoor window open - poisonous fumes will be drawn into the vehicle! If driving the vehicle in this condition is unavoidable, switch the heater to face level vents with all vents open, close the sunroof and windows and turn the air blower to position 4.

Closing

CAUTION: When closing the taildoor, push on the handle - NOT on the taildoor glass.

Load carrying

Long loads should be carried on the roof rack. If it is necessary to carry a load that protrudes through the taildoor window aperture, the weight of the load must NOT rest on the glass. Damage to the glass or window mechanism may occur (see also 'Accommodating long loads', page 103).

Seats

SEATING

WARNING

It is extremely dangerous to ride in the cargo area, inside or outside the vehicle. In a collision, people riding in these areas are more likely to be seriously injured or killed. Do not allow people to ride in any area of your vehicle that is not equipped with seats and safety belts. Be sure everyone in your vehicle is in a seat and using a safety belt properly.

FRONT SEAT ADJUSTMENT

WARNING

To avoid the risk of loss of control and personal injury, DO NOT adjust the driver's seat or head restraint while the vehicle is in motion.

DO NOT travel with the seat backs reclined steeply rearwards. Optimum benefit is obtained from the seat belt, with the backrest angle set to 25 degrees from the upright (vertical).

An inflating airbag can cause facial abrasions and other injuries. The injurious effects of airbag inflation can be minimised by ensuring that driver and passenger are seated correctly, with the seat moved back as far as is practical, and the seat belts worn correctly.

Forward/backward adjustment

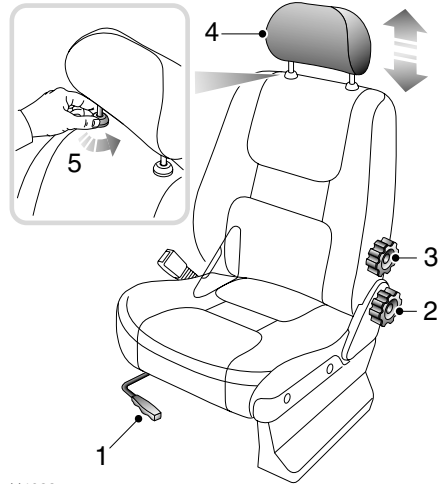
Lift the lever (1) and slide the seat into position. Make sure the seat is locked in position before driving.

Backrest adjustment

Rotate the handwheel (2) to adjust.

Lumbar support adjustment (Driver's seat only)

Rotate the handwheel (3) to increase or decrease support to the lumbar region of the back.



H4033

Head restraint adjustment

WARNING

Head restraints are designed to support the back of the head (NOT THE NECK), and to restrain rearward movement of the head in the event of a collision. The restraint must be positioned level with the head to be effective.

DO NOT drive or carry passengers with the head restraints removed from occupied seats, or adjust the head restraints while the vehicle is in motion.

Failure to have the head restraint installed and properly positioned will increase the potential for serious injuries.

Raise or lower the restraint (4), until the cushion is level with the back of the head.

Seats

Head restraint removal

Turn the right-hand mounting (5) a quarter turn anti-clockwise and pull the restraint upwards.

After replacing a head restraint, turn the right-hand mounting clockwise.

Rear seats

For information on folding the rear seats, refer to *'FOLDING THE REAR SEATS'*, page 103.

Heated front seats*

For information on the operation of the front seat heaters, refer to *'HEATED FRONT SEATS*'*, page 67.

Seat Belts

SEAT BELT SAFETY

WARNING

Seat belts are life-saving equipment. In a collision, occupants not wearing a seat belt will be thrown around inside, or possibly thrown out of, the vehicle. This is likely to result in more serious injuries than would have been the case had a seat belt been worn. It may even result in loss of life!

Don't take chances with safety!

- *DO make sure that ALL occupants are securely strapped in at all times - even for the shortest journeys.*
 - *The airbag supplemental restraint system (SRS) is designed to add to the overall effectiveness of the seat belts. It does not replace them. SEAT BELTS MUST ALWAYS BE WORN!*
 - *Ensure that all seat belts are worn correctly - an improperly worn seat belt increases the risk of death or serious injury in the event of a collision.*
 - *DO use the seat belts to secure items of luggage that are to be carried on the seats - in the event of an accident, loose items become flying missiles capable of causing serious injury, or even death.*
-

WARNING

- *DO NOT fit more than one person into a belt; this could result in the occupants striking each other and causing injury in the event of a crash.*
 - *DO NOT use, or attempt to fit, a seat belt that is twisted or obstructed in any way that could impede its smooth operation. If a belt is twisted, it must be straightened before use. Using a twisted or obstructed seat belt could increase the risk of injury in a crash.*
 - *ALWAYS use the seat belt lock (buckle) nearest the wearer. If the belt is locked in the wrong place, the seat belt will not fit correctly and may ride up over the abdomen, causing serious internal injury in a crash.*
 - *ALWAYS transport children 12 years old and under in the back seat and always properly use appropriate child restraints.*
-

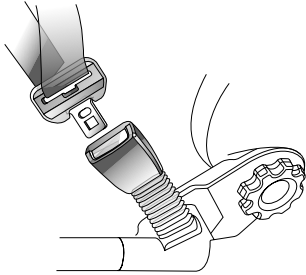
Seat Belts

WEARING SEAT BELTS CORRECTLY

Fastening the seat belts

WARNING

Maladjustment of a seat belt could reduce its effectiveness in a crash, thereby increasing the risk of serious injury or death.



H3303

Inertia reel belts are fitted to all front and rear seating positions.

Draw the belt over the shoulder and across the chest and, ensuring that the webbing is not twisted, insert the metal tongue plate into the buckle nearest the wearer - a 'CLICK' indicates that the belt is securely locked.

In some circumstances, perhaps due to the vehicle being parked on a slope, the inertia mechanism may engage, preventing the initial extension of a belt. This is not a fault - ease the belt free and use it.

NOTE: *The centre rear seat belt tongue plate will not latch into either of the outer seating position buckles.*

NOTE: *Where possible, rear seat passengers should adjust their position on the seat to enable the seat belt webbing to cross the shoulder without pressing on the neck.*

Adjust the seat belt to eliminate any slack in the webbing. DO NOT slacken the webbing by holding the belt away from the body - to be fully effective, the seat belt must remain in full contact with the body at all times. Also, ensure that the lap belt fits as low on the hips as possible and that the shoulder belt passes across the shoulder without slipping off or pressing on the neck.

Positioning the belt

WARNING

Seat belts are designed to bear upon the bony structure of the body (pelvis, chest and shoulders), and can only be worn safely with the seats in a normal, upright, position.

- ***ALWAYS fit the lap strap as low on the hips as possible (never across the abdomen) and ensure that the diagonal belt passes across the shoulder without slipping off or pressing on the neck.***
- ***DO NOT travel with the seat backs reclined steeply rearwards. Optimum benefit from the seat belt is obtained with the seat back set to an angle of 25 degrees from the upright (vertical). Seat belts are only effective when they are properly positioned on the body - a steeply reclined seat could allow a passenger to slip under either the shoulder or the lap belt.***
- ***DO NOT wear the shoulder belt under your arm. In an accident this could increase your chances of being injured.***

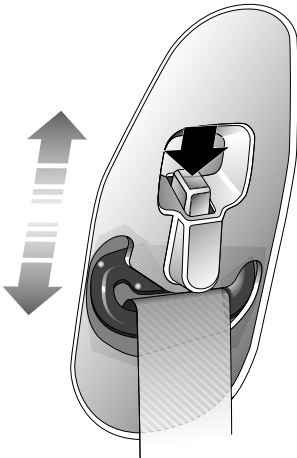
Seat Belts

Wearing seat belts during pregnancy

The seat belts have been designed for all adults, including pregnant women. In a crash situation any occupant is less likely to be injured while correctly restrained by a seat belt. However, pregnant women should wear the lap belt as low on the hips as possible to avoid pressure on the abdomen.

Women should consult their doctor to establish the best use of seat belts during pregnancy.

Upper anchorage adjustment (front seats only)



H2344A

The height of the seat belt upper anchorage can be adjusted for comfort AND safety. Adjust the height of the anchorage point by pressing the button (arrowed in illustration). For safety, the seat belt should always be worn with the webbing crossing the shoulder **MIDWAY BETWEEN THE NECK AND THE EDGE OF THE SHOULDER.**

Misadjustment of the seat belt could reduce its effectiveness in a crash. Always ensure that the anchorage is correctly located in one of the height positions before driving and **DO NOT** adjust the height once the vehicle is in motion.

For children where the seat belt cannot be properly positioned, the use of a booster seat appropriate to the age and size of the occupant is recommended.

Releasing the belt

Press the **RED** button on the seat belt buckle.

Seat Belts

SEAT BELT PRE-TENSIONERS

The seat belt pre-tensioners activate in conjunction with the airbag SRS and provide additional protection in the event of a severe frontal impact on the vehicle (see 'HOW THE AIRBAG SRS WORKS', page 41). The pre-tensioners automatically retract the seat belts fitted to the front seats. This reduces any slack in both the lap and diagonal portions of the belts, thereby reducing forward movement of the belt wearer in the event of a severe frontal collision.

The airbag SRS warning light on the instrument panel will alert you to any malfunction of the seat belt pre-tensioners.

If the pre-tensioners have been activated, the seat belts will still function as restraints, and must be worn in the event that the vehicle remains in a driveable condition.

NOTE: *The seat belt pre-tensioners will NOT be activated by rear, side or minor frontal impacts.*

WARNING

After the seat belt pre-tensioners have been activated once, they MUST BE REPLACED by a Land Rover retailer. Failure to replace the pre-tensioners will reduce the efficiency of the vehicle's front restraint systems.

After any frontal impact, always have the seat belts and pre-tensioners checked and, if necessary, replaced by a Land Rover retailer.

In the interests of safety, it is recommended that removal or replacement of the front seats and seat belts, with the use of factory-specified parts, should ONLY be carried out by a Land Rover retailer.

CARE & MAINTENANCE OF SEAT BELTS

WARNING

- ***DO NOT allow foreign matter (particularly sugary food and drink particles) to enter the seat belt locks - such substances can render the locks inoperative.***
 - ***Regularly inspect the belt webbing for signs of fraying, cuts and wear, and also pay particular attention to the condition of the fixing points and adjusters.***
 - ***DO NOT bleach or dye the webbing. Clean the webbing using warm water and non-detergent soap only - allow to dry naturally and DO NOT retract or use the belts until they are completely dry.***
 - ***Always replace a seat belt that shows signs of webbing wear or has withstood the strain of a severe vehicle impact.***
-

Testing inertia reel belts

- With the seat belt fastened, give the webbing near the buckle a quick upward pull. The buckle must remain securely locked.
- With the seat belt unfastened, unreel the webbing to the limit of its travel. Check that unreeling is free from snatches and snags and then allow the belt to FULLY retract.
- Partially unreel the webbing, then hold the tongue plate and give it a quick forward pull. The mechanism must lock automatically and prevent any further unreeling.

If a seat belt should fail any of these tests, contact your retailer immediately.

Child Restraints

CHILD RESTRAINTS FOR SMALL CHILDREN AND BABIES

Infants and children too small for adult seat belts should be restrained in a child safety seat or restraint system appropriate to their age and/or size.

Child seats and restraint systems are designed to be secured in vehicle seats by lap belts (or the lap belt portion of a lap/shoulder belt). Some child restraint systems also incorporate a tether strap which can be attached to an anchorage point on the vehicle. Information about tether strap attachment points and the seat belt locking mechanism, which is used to restrain child seats and restraints is shown later in this section.

CAUTION: When fitting child seats and restraint systems, always ensure that the manufacturer's fitting instructions are followed exactly. Note that crash statistics show that children are safer when properly restrained in the rear seating positions than in the front.

WARNING

- ***DO NOT allow a baby or infant to be carried on the lap. The force of a crash can increase effective body weight by as much as 30 times, making it impossible to hold on to the child.***
 - ***Children typically require the use of a booster seat appropriate to their age and size, thereby enabling the seat belts to be properly fitted, reducing the risk of injury in a crash.***
 - ***Children could be endangered in a crash if their child restraints are not properly secured in the vehicle.***
 - ***DO NOT use a child seat that hooks over the seat back. This type of seat cannot be satisfactorily secured, and is unlikely to be safe for your child.***
 - ***Never leave a child unattended in your vehicle.***
-

Child Restraints

Vehicles fitted with a passenger airbag

For optimum safety, children should travel in the rear of the vehicle at all times; front passenger seat travel is NOT recommended. However, if it is essential that a child travel in the front, set the seat fully rearward and seat the child in a FORWARD FACING child seat.



The above symbol affixed to the passenger side fascia panel of your vehicle, warns against the use of a REAR FACING child seat in the front passenger seat, when a passenger airbag is fitted. This type of child seat could cause serious injury to a child in the event of an airbag deployment.

WARNING

UNDER NO CIRCUMSTANCES SHOULD A REARWARD FACING CHILD SEAT BE INSTALLED IN ANY FRONT PASSENGER SEAT POSITION. INFLATION OF THE AIRBAG COULD RESULT IN SERIOUS INJURY OR DEATH TO THE CHILD.

Seat belt locking mechanism

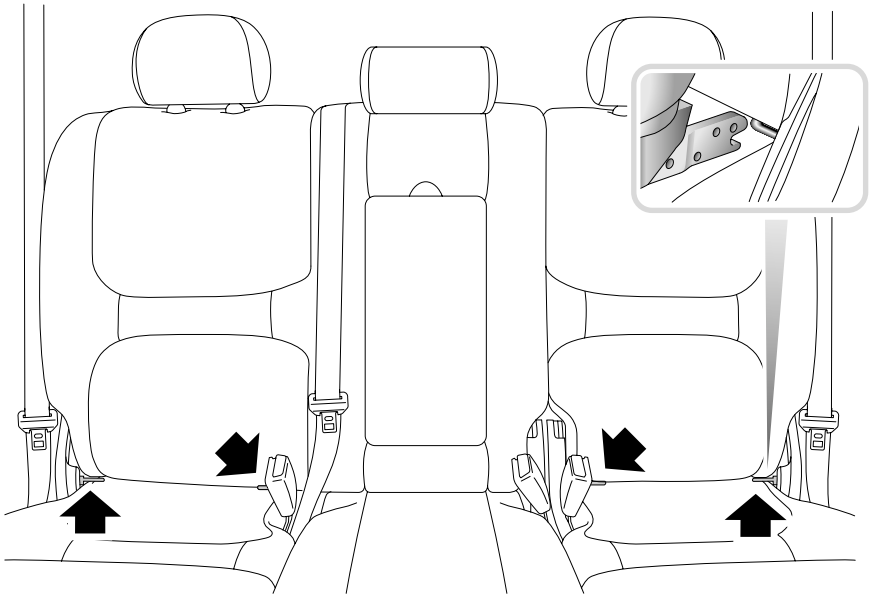
All front passenger and rear seat belts have a special locking mechanism which aids the securing of child restraints. The mechanism is used to secure a child restraint as follows:

1. Attach the seat belt to the child restraint in accordance with the manufacturer's instructions.
2. Insert the metal tongue of the seat belt into the lock ensuring that it engages with a 'click'.
3. Pull on the shoulder section of the belt until it is fully extended.
4. Allow the belt to retract. A 'clicking' sound will confirm that the mechanism has engaged.
5. Remove all slack from the mechanism, by pulling upwards on the shoulder belt, immediately above the child restraint.
6. Evaluate the tightness of the installation by rocking the child seat back and forth to ensure it is tight and stable.
7. If the child seat needs to be tightened further, remove the metal tongue of the seat belt from the buckle and feed some of the shoulder belt webbing back into the reel (thereby shortening the belt). Then re-attach the metal tongue into the buckle (if the belt has been tightened correctly, this will take some effort).
8. Re-evaluate the tightness of the installation. If the child seat is still too loose, repeat the above procedure, making the belt incrementally shorter (and therefore tighter). It may be necessary to put your weight onto the seat (to compress the seat cushion) in order to fasten the belt.

To deactivate the locking mechanism, unlatch the seat belt and allow it to fully retract.

Child Restraints

'LATCH' TYPE CHILD RESTRAINTS



H4322

'LATCH' (Lower Anchors and Tether for Children)

The 'LATCH' three-point type child restraint system complies with Federal Motor Vehicle Safety Standards guidelines and is approved for fitting in your vehicle.

Fitting the restraints

This type of child restraint system should only be fitted in the two outer seating positions of the rear seats. Anchor bars built into the rear seat frame enable 'LATCH' type restraints to be securely attached to the vehicle seat in these positions only. The anchor bar locations are shown in the illustration above.

WARNING

If the restraint is not correctly anchored, there is a significant risk of injury to the child, in the event of a collision or emergency braking.

WARNING

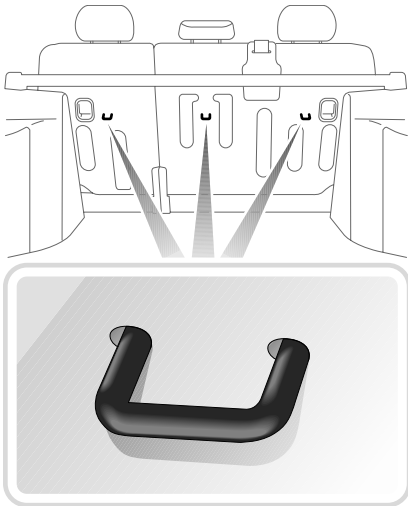
DO NOT attempt to fit 'LATCH' type restraints to the centre seating position - the anchor bars are designed to hold restraints in the outer seating positions only.

When fitting this type of child restraint, always follow the instructions supplied by the manufacturer of the restraint.

Once the restraint is installed, you are recommended to test the security of the installation before seating the child. Attempt to twist the restraint from side to side and to pull the restraint away from the vehicle seat; then check that the anchors are still securely in place.

Child Restraints

TETHER STRAP ANCHORAGES



H4240

Provision is made for the fitting of up to three child seats or restraint systems in the rear seats, of the type that require tether strap anchorage points.

There are three tether strap anchorage points. These should be used to attach tether straps from child seats or restraint systems. All three anchorage points are fitted to the back of the rear seat (shown in the accompanying illustration).

Attaching tether straps

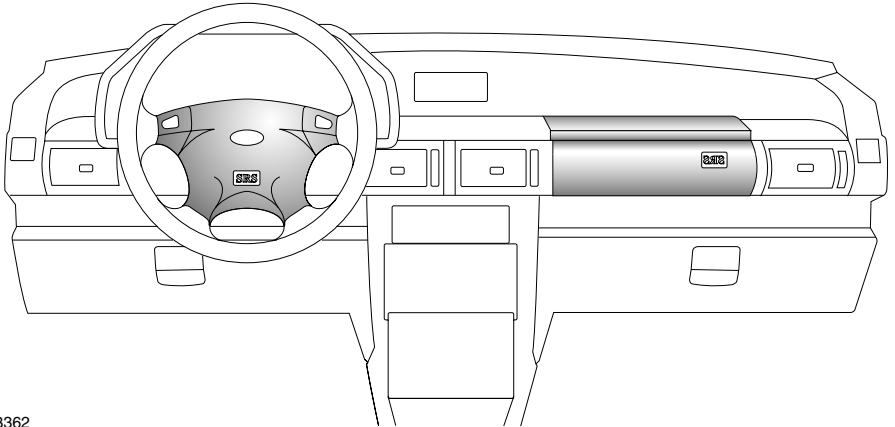
1. Install the child restraint securely in one of the rear seating positions.
2. Pass the tether strap over the back of the vehicle seat and beneath the underside of the head restraint.
3. Attach the clip on the head of the tether strap to the tether anchor on the back of the vehicle seat.
4. Tighten the tether strap according to the manufacturer's instructions to remove any slack in the webbing.

WARNING

- ***Always follow the child seat or restraint system manufacturer's instructions when fitting tether straps.***
- ***When fitting a child seat or restraint system, always pass the tether strap over the top of the seat back and beneath the underside of the head restraint.***
- ***If a child seat or restraint system is to be fitted to the centre seating position, the centre armrest must be in the stowed position (folded into the seat).***

Airbag SRS

AIRBAG SUPPLEMENTAL RESTRAINT SYSTEM (SRS)



H3362

The airbag supplemental restraint system (SRS) provides additional protection for the driver and front seat passenger, in the event of a severe frontal impact on the vehicle.

Provided the front seat occupants are correctly seated, with seat belts properly worn, the airbags will provide additional protection to the chest and facial areas in the event of the vehicle receiving a severe frontal impact.

NOTE: *Inflation and deflation of the airbags takes place very quickly and will not protect against the effects of secondary impacts that can occur during multiple vehicle collisions.*

The airbags are located in the centre pad of the steering wheel and the fascia panel above the glovebox.

WARNING

Always remember; the SRS/airbags are a supplemental restraint system providing ADDITIONAL protection in certain types of frontal impact collisions only - they DO NOT replace the need to wear a seat belt. To

To ensure correct deployment of the airbags, it is essential that obstructions are not allowed to intervene between an airbag and the occupant. The following are examples of the type of obstructions that could either, impede correct operation of the airbags, or jeopardise personal safety in the event of an airbag deployment:

- Accessories attached to or obscuring an airbag cover.
- Items of hand luggage, or other objects placed on an airbag cover.
- Feet, knees or any other part of the anatomy in contact with, or in close proximity to, an airbag cover.

minimize the risk of severe injury or death in the event of a crash, all occupants in all seating positions including the driver, should always wear their seat belt whether or not an airbag is present in that seating position!

Airbag SRS

WARNING

Following inflation, some SRS/airbag components are hot - DO NOT touch until they have cooled.

Even with SRS/airbag equipment fitted, seat belts must ALWAYS be worn because:

- An airbag will only provide additional protection in certain types of frontal collisions. NO protection is afforded against the effects of side or rear impacts, rollover accidents, or minor frontal impacts.*
 - Inflation and deflation take place instantaneously and will not provide protection against the effects of secondary impacts that can occur during multiple vehicle collisions.*
-

WARNING

The airbag module inflates with considerable speed and force. For your safety:

An inflating airbag can cause facial abrasions and other injuries. The injurious effects of airbag inflation can be minimized, by ensuring driver and passenger are seated correctly, with the seat moved back as far as is practical, and the seat belts worn correctly.

NEVER attach accessory items to an airbag module cover, or place items of hand luggage or any objects on the top of a module cover. These could interfere with the inflation of the airbag, or if the airbag inflates, be propelled inside the vehicle causing injury or death to the occupants.

DO NOT allow occupants to obstruct the operation of the airbag modules by placing their feet, knees or any part of their person in contact with, or close to, an airbag module whilst the vehicle is moving.

Activation of an airbag creates dust, causing possible breathing difficulties for asthma sufferers or other people with respiratory problems. If an airbag is activated, any occupant who suffers from breathing difficulties should; either leave the vehicle as quickly as possible, or obtain fresh air by fully opening the windows or doors.

When an airbag inflates, a fine powder is released. This is not an indication of a malfunction. However, the powder may cause irritation to the skin and should be thoroughly flushed from the eyes and any cuts or abrasions of the skin.

Airbag SRS

Seating positions

In order to provide optimum protection in the event of a severe frontal impact, it is necessary for the airbags to deploy with considerable speed.

An inflating airbag can cause facial abrasions and other injuries if the occupant is too close to the airbag at the time of its deployment.

WARNING

- ***To reduce the risk of accidental injury from inflating airbags, seat belts should be correctly worn at all times. The National Highway Traffic Safety Administration (NHTSA) recommends a minimum distance of 10 inches (25 cm) between an occupant's chest and the steering wheel.***
 - ***Occupants not seated correctly in allocated seats may be subject to serious injury or death upon airbag deployment.***
-

HOW THE AIRBAG SRS WORKS

In the event of a severe frontal impact, the airbag control unit monitors the rate of deceleration induced by the collision, to determine whether the airbags should be deployed.

Operation of the airbag SRS is dependent entirely on the rate at which the vehicle's passenger compartment changes speed as a result of a collision. The circumstances affecting different collisions (vehicle speed, angle of impact, type and size of object hit, for example), vary considerably and will affect the rate of deceleration accordingly.

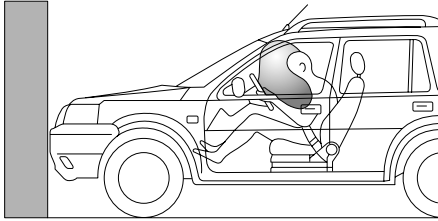
NOTE: *The SRS/airbag is not designed to activate in all frontal impacts; most minor frontal impacts, heavy braking and driving over pot holes will not result in sufficient deceleration to cause the airbags to inflate. This does not indicate that there is a fault with the system. However, if as a result of an impact, you believe the airbags should have deployed and they failed to do so, please call 1(800)637-6837 for advice, or to arrange for a Land Rover representative to inspect the vehicle to determine whether the system operated correctly.*

It follows, therefore, that significant superficial damage can occur without the airbags deploying or, conversely, that a relatively small amount of structural damage may cause the airbags to be deployed.

Airbags will only deploy when they are required to supplement the restraining force of the seat belts.

In the case of a severe frontal collision, both front airbags and seat belt pre-tensioners will be deployed.

Airbag SRS



H3307

Airbag inflation is virtually instantaneous and occurs with considerable force, accompanied by a loud noise. The inflated bag, together with the seat belt restraint system, limit the movement of a front seat occupant, thereby reducing the risk of injury to the head and upper torso.

After inflation the airbags deflate immediately. This provides a gradual cushioning effect for the occupant and also ensures that the driver's forward vision is not impaired.

NOTE: After inflation, some airbag components are hot - DO NOT touch until they have cooled.

Airbag SRS warning light

Whenever the starter switch is turned to position 'II', the diagnostic control unit monitors the readiness of the system's electrical circuits. The elements of the system being monitored include:

- SRS warning light
- Rotary coupler
- Airbag modules
- Airbag diagnostic control unit
- Airbag wiring harness

A warning light mounted on the instrument panel will alert you to any malfunction of the SRS/airbag. The system should always be checked by a retailer if any of the following symptoms occurs. These indicate a fault, which may result in the SRS/airbag not operating as required in the event of a frontal impact.

- The warning light fails to illuminate when the starter switch is turned to position 'II'.
- The warning light fails to extinguish within approximately five seconds after the starter switch is turned to position 'II'.
- The warning light illuminates after the engine is started, or while the vehicle is being driven.

Airbag SRS

SERVICE INFORMATION

WARNING

DO NOT attempt to service, repair, replace, modify or tamper with any part of the airbag SRS, or wiring in the vicinity of an airbag SRS component; this could cause the system to activate, resulting in personal injury.

After ten years from the date of manufacture (this is shown on the certification plate attached to the lock face of the front left hand door), some components will need to be replaced by a Land Rover retailer.

In addition, ALWAYS contact your retailer if:

- an airbag inflates.
- the front of the vehicle is damaged, even if an airbag has not inflated.
- any part of an airbag module cover shows signs of cracking or damage.

WARNING

The components that make up the airbag SRS are sensitive to electrical or physical interference, either of which could easily damage the system and cause inadvertent operation or a malfunction of the airbag.

For your safety it is recommended that you seek the assistance of a Land Rover retailer to carry out any of the following:

- ***Removal or repair of any wiring or component in the vicinity of any of the SRS components, including the steering wheel, steering column, instrument and fascia panels.***
 - ***Installation of electronic equipment such as a mobile phone, two-way radio or in-car entertainment system.***
 - ***Attachment of accessories to the front of the vehicle.***
-

WARNING

Modification of the front of the vehicle could adversely affect airbag performance and should NOT be undertaken.

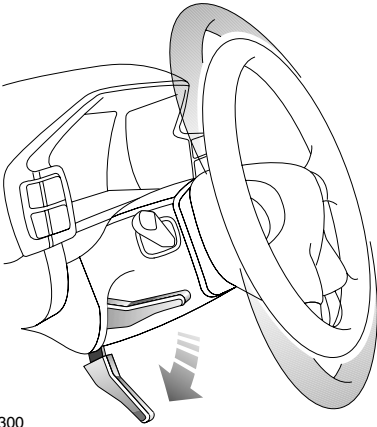
Disposing of vehicles

If you sell your vehicle, be sure to inform the new owner that the vehicle has an airbag SRS and make the new owner aware that certain components of the system will need replacing after 10 years.

If your vehicle is to be scrapped; uninflated airbags are potentially very dangerous and must be safely deployed in a controlled environment by qualified personnel, before a vehicle is scrapped.

Steering Column

STEERING COLUMN ADJUSTMENT



H2300

The angle of the steering column can be adjusted to suit your driving position:

1. With the vehicle stationary, push the locking lever fully down to free the steering column.
2. Move the steering wheel (up or down) into the desired position, making sure the instrument panel is clearly visible.
3. When adjustment is complete, pull the locking lever fully up to lock the steering column in position.

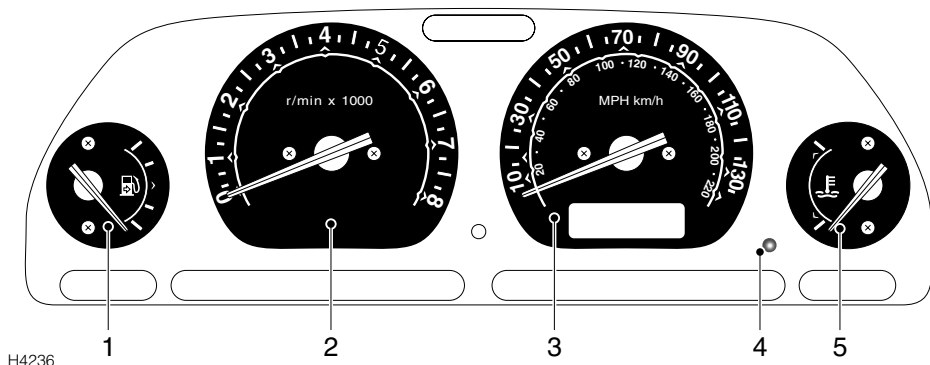
WARNING

DO NOT adjust the steering column while the vehicle is in motion. This is extremely dangerous and may result in loss of control of the vehicle!

DO NOT drive the vehicle unless the locking lever is in the locked position (fully up).

Instruments

INSTRUMENT PANEL



1. Fuel gauge

The pointer indicates the fuel level when the starter switch is turned to position 'II'. After refuelling, the pointer slowly rises to the new level after the starter switch is turned on. When the starter switch is turned off, the pointer quickly lowers to the 'empty' position.

An indicator light in the fuel gauge illuminates when the fuel level is low (approximately 2.4 US gallons (9 litres) fuel remaining). If the light illuminates, refuel at the earliest opportunity.

An arrow on the face of the gauge indicates on which side of the vehicle the filler is located.

CAUTION: Never allow the vehicle to run out of fuel - the resultant misfire could damage the catalytic converter.

NOTE: *Driving on twisting or hilly roads may disturb the accuracy of the fuel gauge. It is advisable to check the fuel level when the vehicle is travelling on a straight, level road.*

2. Tachometer

Indicates engine speed in revolutions per minute (x 1000). To protect the engine from damage, NEVER allow the tachometer pointer to enter the RED sector.

3. Speedometer

Indicates road speed in miles per hour and kilometres per hour.

4. Trip recorder reset button

When the starter switch is turned on, the display shows either the odometer reading, or the trip recorder reading. By pressing the trip recorder reset button briefly, the display will change between trip recorder and odometer modes.

With the trip recorder mode displayed, press and hold the reset button for 2 seconds to reset the trip recorder display to zero.

5. Temperature gauge

This gauge indicates the temperature of the engine coolant. As the engine warms up, the pointer will rise to the mid-point of the gauge, where it should remain while the engine is operating at its normal temperature.

If the pointer reaches the RED mark, the coolant is too hot and severe engine damage could result; in which case you should stop the vehicle as soon as safety permits and seek qualified assistance.

Instruments

6. Digital display



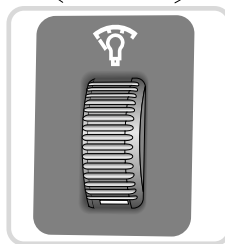
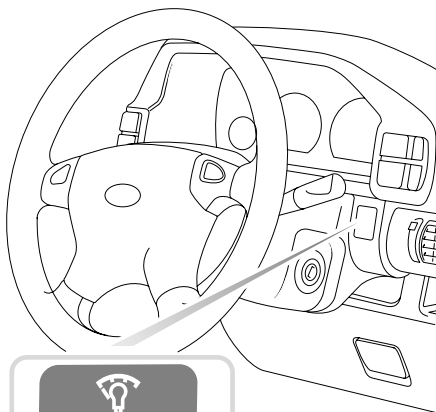
H3370

The panel displays the following:

- Odometer reading (shows the total distance travelled by the vehicle). The word 'ODO' is displayed.
- Trip recorder (for recording individual journey distances). The word 'TRIP' is displayed instead of 'ODO'.
- Gear selector position ('1', '2', '4', 'P', 'R', 'N', 'D').
- The word 'SPORT' confirms the selection of Sport mode.
- Manual mode gear selection information ('1', '2', '3', '4' or '5').

For further information concerning the automatic transmission, (see "*CommandShift™ TRANSMISSION*", page 89).

Instrument illumination control



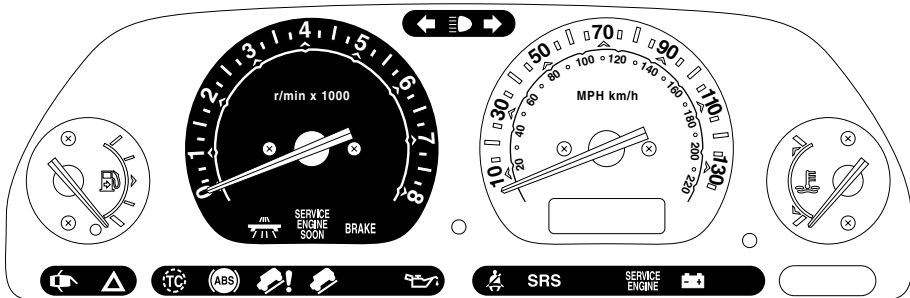
H4019

Rotate the control up to increase, or down to reduce, the intensity of instrument panel illumination.

The instrument illumination control also adjusts illumination of all switch lighting sources forward of the driver.

Warning Lights

INSTRUMENT PANEL



H4237A

IMPORTANT INFORMATION

RED warning lights are of particular importance, their illumination indicates that a fault exists. If a RED warning light illuminates, stop the vehicle and review the specific instructions given in this section.

Direction indicators - GREEN



The left or right warning light flashes in time with the relevant direction indicator when they are operated. If either warning light fails to flash or flashes rapidly, the selected direction indicator light is not operating.

NOTE: *If the hazard warning lights are operated, both direction indicator warning lights will flash together.*

Headlight high beam - BLUE



Illuminates when the headlights are switched to high beam.

Cruise control - AMBER*



Illuminates when the cruise control master switch is turned on and cruise control is active, and extinguishes when the switch is turned off or if cruise control is deactivated.

Service engine soon- AMBER



Illuminates as a bulb check when the starter switch is turned to position 'I' and extinguishes when the engine is started. If the light illuminates while the engine is running, this indicates the detection of an emissions fault by the engine management system.

If the light illuminates and the vehicle drives normally:

- Contact a retailer to arrange a service appointment at your earliest convenience - you may still drive the vehicle.

If the light flashes and/or the vehicle does not drive normally:

- Avoid high speeds and seek immediate assistance from your retailer.

Warning Lights

Parking brake & brake system - RED

BRAKE

The light illuminates when the parking brake is applied and extinguishes when it is fully released. If the light continues to illuminate after the handbrake is released, a fault with the braking system is indicated; check the brake fluid level (see '*BRAKE FLUID*', page 140). If the light continues to illuminate after this, seek qualified assistance urgently.

Door open - RED



Illuminates when any of the doors (including the taildoor and bonnet) are not fully closed. DO NOT drive the vehicle with the light illuminated.

Hazard warning lights - RED



Illuminates in conjunction with the direction indicator warning lights, when the hazard warning lights are operating.

Traction control - AMBER



Illuminates as a bulb and system check when the starter switch is turned to position 'II' and extinguishes after 4 seconds approx. The light illuminates for a minimum of 2 seconds, when traction control is operating.

If the light illuminates continuously while traction control is NOT operating, a fault with the system is indicated; seek qualified assistance.

The light also has an overheat function: if traction control is required, but the brakes are too hot, the light will flash for the period when traction control is required and traction has been lost.

ABS - AMBER



Illuminates for approximately 1 second as a bulb and system check when the starter switch is turned to position 'II', and then extinguishes. If the light does not extinguish, a fault has occurred with the ABS system and you should consult your Land Rover retailer at the earliest opportunity.

If the light remains on or subsequently illuminates while driving, a fault has been detected by the self-monitoring system. This means that full ABS control may not be available and you should consult your retailer at the earliest opportunity.

Hill descent control (HDC) 'failure' - AMBER



The light illuminates briefly as a bulb check when the starter switch is turned to position 'II'. The light will flash if the brakes become in danger of overheating and continue flashing until the brakes have cooled sufficiently to enable HDC to operate again (see also '*HDC fade-out*', page 95).

If the light illuminates at any other time, a fault in the system is indicated. If this occurs, deselect HDC and consult your Land Rover retailer.

Warning Lights

Hill descent control (HDC) 'information' - GREEN



Illuminates briefly as a bulb check when the starter switch is turned to position 'II' and will illuminate when HDC is selected.

If HDC is selected when either of the operating gears is engaged (1st or reverse), the light will illuminate continuously.

When HDC is selected and a non-operating gear position is engaged, the light will flash to inform the driver that HDC is selected, but not operating (see also '*HDC fade-out*', page 95).

Low oil pressure - RED



Illuminates as a bulb check when the starter switch is turned to position 'II' and extinguishes when the engine is started. If the light remains on, flashes on and off or illuminates continuously when driving, serious engine damage could occur; stop the vehicle as soon as safety permits and SWITCH OFF THE ENGINE IMMEDIATELY. Seek qualified assistance before driving.

Seat belt - RED*



The light illuminates when the starter switch is turned to position 'II' as a reminder to the driver to ensure that all occupied seat belts are securely fastened. The light extinguishes after approximately five seconds, or when the driver's seat belt is fastened.

Airbag SRS - RED



The light illuminates when the starter switch is turned to position 'II' and extinguishes after about five seconds. If the light illuminates at any other time, seek qualified assistance urgently.

Service engine - AMBER



Illuminates briefly when the starter switch is turned to position 'II'. If it remains on, or illuminates at any other time, the engine management system requires attention. Stop the vehicle as soon as safety permits and switch off the engine for at least 30 seconds; if the light illuminates again after the engine is restarted, it is permissible to continue driving (with reduced engine power), but qualified assistance must be sought as soon as possible, to prevent potential engine damage.

Battery charging - RED



The light illuminates as a bulb check when the starter switch is turned to position 'II' and extinguishes as soon as the engine is running. If it remains on, or illuminates when driving, a fault with the battery charging system is indicated. Seek qualified assistance urgently.

Audible Warnings

AUDIBLE WARNINGS

Lights on reminder

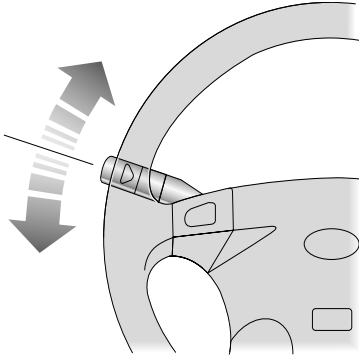
If the lights are left on after the starter switch is turned off, a warning chime will sound when the driver's door is opened. The chime will cease as soon as the lights are switched off or when the driver's door is closed.

Starter key reminder

If the key is left in the starter switch while the driver's door is open, a warning will chime continuously. The chime stops as soon as the door is closed, or the key is removed from the starter switch.

Lights & Indicators

DIRECTION INDICATORS

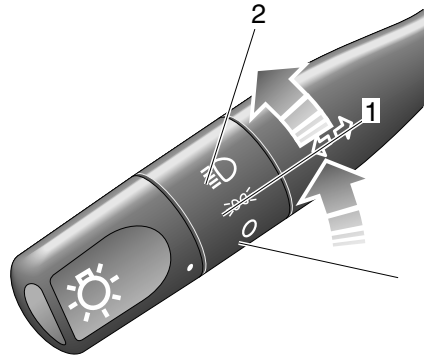


H3340

Move the lever **DOWN** to indicate a **LEFT** turn, and **UP** to indicate a **RIGHT** turn (the appropriate **GREEN** warning light on the instrument panel will flash in time with the direction indicators).

Hold the lever part-way up or down against spring pressure to indicate a lane change.

LIGHTS



H3341

The side, tail and headlights operate with the starter switch in any position.

If the exterior lights are left on after the starter switch is turned off, a warning chime will sound as soon as the driver's door is opened. The chime will cease as soon as the lights are switched off, or the door is closed.

Side, tail and instrument panel lights

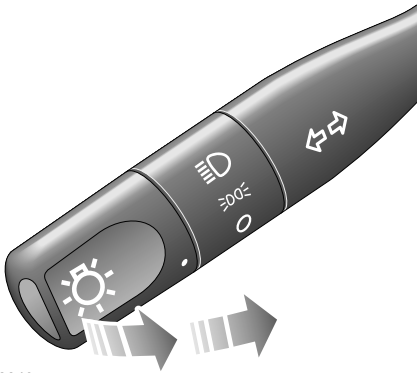
Turn lighting switch to position 1.

Headlights

Turn lighting switch to position 2.

Lights & Indicators

Headlight high and dipped beams

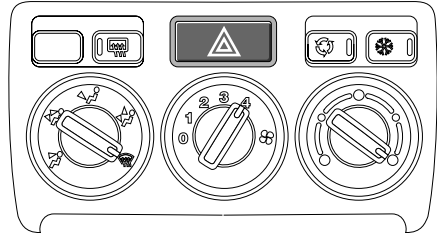


H3342

Pull the lever fully towards the steering wheel to change headlight beams (BLUE warning light glows when the headlights are on high beam).

To flash the headlights, pull the lever part way towards the steering wheel and release.

HAZARD WARNING LIGHTS



H3344



Press to operate; all the direction indicator lights (including those fitted to a trailer) will flash together. Use **ONLY** in an emergency to warn other road users when your stationary vehicle is causing an obstruction, or is in a hazardous situation. Remember to switch off before moving away.

Wipers & Washers

OPERATING

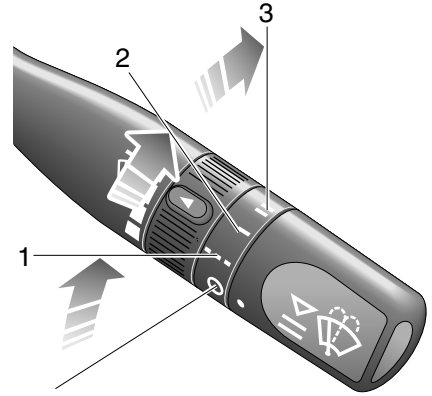
The wipers and washers will only operate when the starter switch is turned to position 'I' or 'II'.

IMPORTANT

- DO NOT operate the wipers on a dry screen.
- To prevent possible overload damage to the wiper motor, in freezing or very hot conditions ensure that the blades are not frozen or stuck to the glass before operating the wipers.
- In winter, remove any snow or ice from around the arms and blades, including the wiped area of the windscreen and the heater air intakes.

NOTE: If the wiper blades have stuck to the glass, a thermal cut-out may temporarily prevent the wiper motor from operating. If this is the case, switch the wipers off, free the blades from the obstruction and then switch on again.

WINDSCREEN WIPERS



H3345

Intermittent wipe

Turn switch to position 1.

Normal speed wipe

Turn switch to position 2.

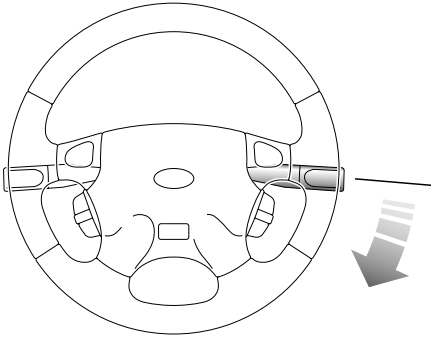
Fast speed wipe

Turn switch to position 3.

NOTE: If the front screen wipers are operating (in either intermittent or continuous mode), the rear wiper operates automatically whenever reverse gear is selected.

Wipers & Washers

Single wipe

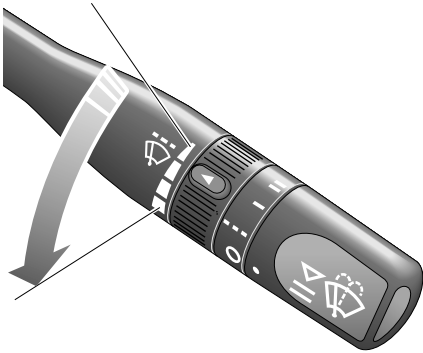


H3520

Pull the lever down and release immediately.

NOTE: With the lever held down, the wipers will operate at high speed until the lever is released.

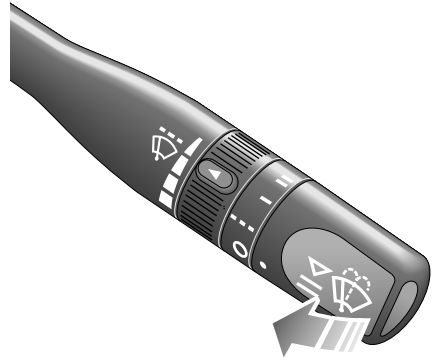
Variable delay (intermittent wipe)



H3346

Rotate the inner switch to vary the delay between wipes.

WINDSCREEN WASHERS



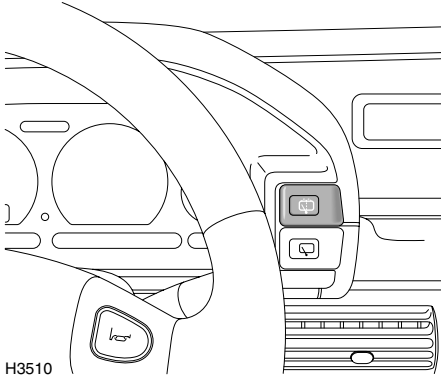
H3347

Pull the lever toward the steering wheel. The windscreen wipers will operate in conjunction with the washers for as long as the lever is held in this position, the wipers continuing for a further 3 to 4 wipes after the lever is released.

Wipers & Washers

REAR SCREEN WIPER AND WASHER

Rear window wash/wipe

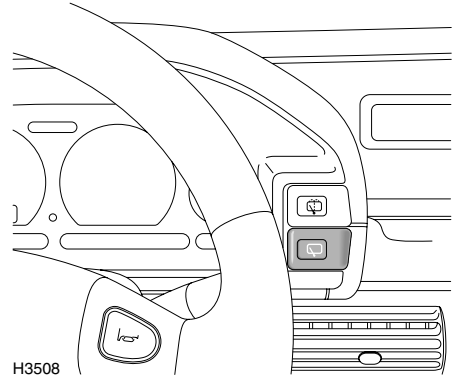


H3510



Press and hold the switch for the required duration of screen washing. The wiper operates automatically during washing and continues for a further 4 wipes (approx.) after the switch is released.

Rear screen wiper



H3508



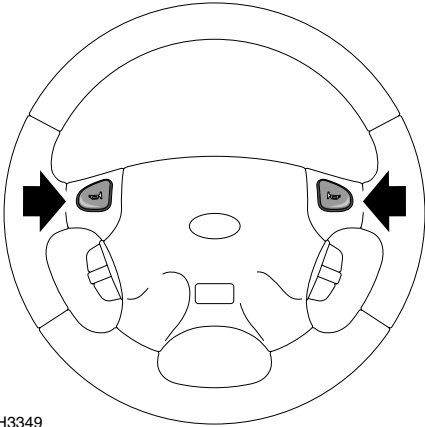
Press to operate: after continuously wiping 3 or 4 times, the wiper operates intermittently (approx. once every 6 seconds) until switched off.

NOTE: When reverse gear is selected, the rear wiper will operate continuously in tandem with the front wipers.

NOTE: Opening the taildoor, or lowering the rear screen, will switch the rear wiper off.

Horn

HORN



H3349

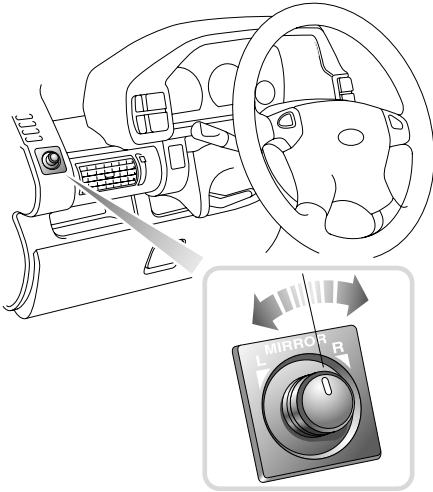
To operate, press either of the horn switches set into the steering wheel pad.

Mirrors

EXTERIOR MIRRORS

NOTE: The right hand mirror glass is convex, providing a wider field of vision. As a result, objects reflected in this mirror are closer than they appear.

Adjustment



H3363

- Turn the control to the 'L' or 'R' position to select either the left or right hand mirror.
- With the starter switch turned to position 'II', push the control in the appropriate direction to tilt the mirror glass up/down/left or right.
- When adjustment is complete, return the control to the OFF position (midway between 'L' and 'R').

Heating elements

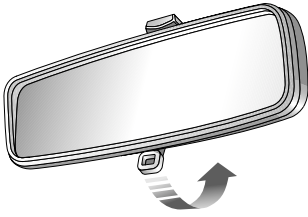
The exterior mirrors have integral heating elements for dispersing ice and mist, which operate automatically whenever the starter switch is in position 'II'.

Folding the mirror body

The body of each door mirror is designed to fold forwards or rearwards on impact. They can also be folded back manually towards the side windows into a 'park' position, to enable the vehicle to negotiate narrow openings.

Mirrors

INTERIOR MIRROR

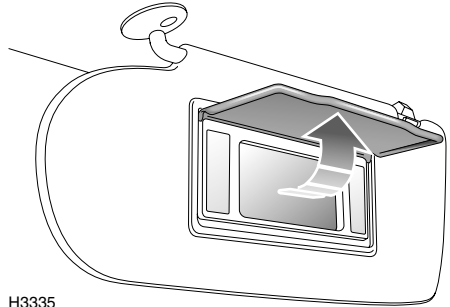


H2319

The interior mirror can be dipped to reduce glare from following vehicles. In the event of excessive glare, move the lever at the base of the mirror forward to 'dip' the mirror. Normal visibility is restored by pulling the lever back to its original position.

NOTE: In some circumstances, the view reflected in a 'dipped' mirror can confuse the driver as to the precise position of following vehicles. Remember to take additional care!

VANITY MIRROR*



H3335

To use the vanity mirror, pull down the passenger's sun visor. On some models, the vanity mirror is illuminated; lift the cover to illuminate the mirror.

NOTE: Always close the cover, or on vanity mirrors not fitted with a cover, always return the visor to its stowed position when not in use, to avoid possible scorching of the seats by the sun reflected in the mirror.

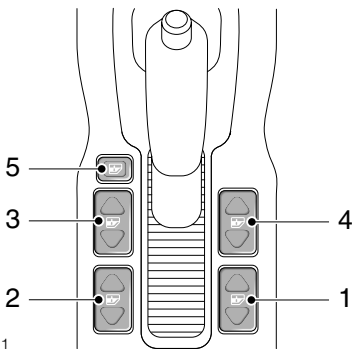
Windows

ELECTRIC WINDOW CONTROLS

WARNING

Accidental closure of an electrically operated window on fingers, hands or any vulnerable part of the body, can result in serious personal injury. Always observe the following precautions:

- **ENSURE that passengers are kept clear while the windows are being operated and that the windows are not obstructed when opening or closing.**
- **ENSURE that all adult passengers are familiar with the controls and the potential dangers of operating electric windows.**
- **DO NOT allow passengers to extend any part of their bodies through the windows while the vehicle is moving.**
- **NEVER leave children alone in the vehicle as this could result in injury or even death.**



H4331

The switches on the centre console operate the windows as follows:

1. Right-hand rear window.
2. Left-hand rear window.
3. Left-hand front window.
4. Right-hand front window.
5. Isolation switch for rear door windows.

NOTE: Electric rear windows can also be operated by the individual switches mounted on each rear door, provided that the isolation switch has not been activated.

Window operation

The electric windows can be operated when the starter switch is at position 'II' and for up to 45 seconds after the starter switch is turned off (provided neither front door is opened in the meantime).

Press and hold the bottom half of a switch to lower and the upper half to raise. The window will stop moving when the switch is released.

ALWAYS close the windows when the vehicle is unattended.

Rear window isolation switch

Press once to isolate the rear window switches (indicator light in the switch illuminates); press a second time to restore independent control.

WARNING

ALWAYS isolate the rear window switches when carrying children.

'One touch' down (Driver's door only)

By briefly pressing (and then releasing) the bottom half of the switch, the window will open fully at a single touch. Window movement can be stopped at any time by briefly pressing the upper half of the switch.

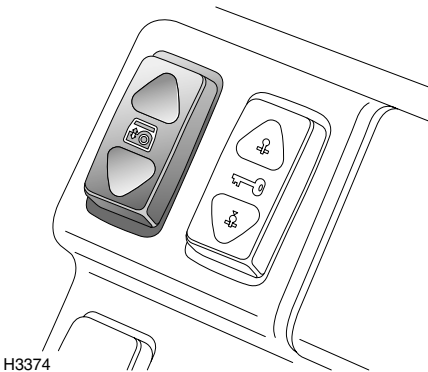
Windows

ELECTRIC TAILDOOR GLASS

NOTE: Long loads should be carried on the roof rack. If it is necessary to carry a load that protrudes through the taildoor window, the weight of the load must NOT rest on the glass of a partially open window. Damage to the glass or window mechanism may occur (see also 'Accommodating long loads', page 103).

The taildoor glass can be lowered from outside the vehicle, to enable easy access to the loadspace area when it is impossible or inconvenient to open the taildoor.

Raising and lowering



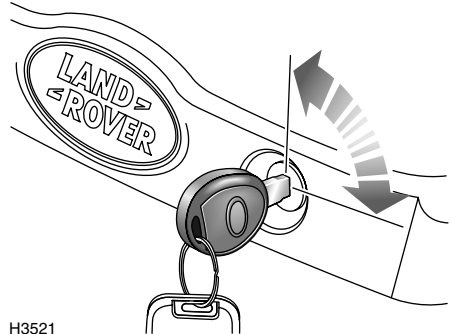
From inside the vehicle:

With the starter switch in position 'II', press and hold the bottom half of the switch to lower the glass. Movement will stop when the switch is released.

Press the upper half of the switch to raise the glass. If the switch is released before the glass is fully raised it will automatically lower again.

One touch down:

By briefly pressing (and then releasing) the bottom half of the switch, the taildoor glass will open fully at a single touch.



From outside the vehicle:

Press and hold the UNLOCK button on the remote handset (hold for 2 seconds) - the taildoor glass will fully lower.

To raise the glass, insert the key into the switch mounted in the taildoor and turn clockwise. If the switch is released before the glass is fully raised it will automatically lower again.

NOTE: If the vehicle is locked when the glass is lowered using the handset, the driver's door will unlock and vehicle security will be disabled. In this case, remember to relock the vehicle.

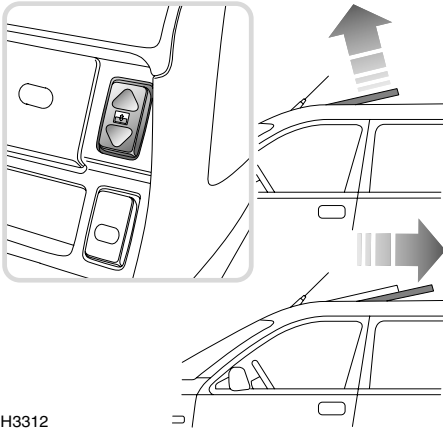
Battery disconnection

If the battery has been disconnected, the taildoor glass will need to be recalibrated. If the alarm was armed when the battery was disconnected (or discharged), disarm the alarm after reconnection - the glass will fully lower (this will happen automatically if the alarm was in a disarmed state when the battery was disconnected).

After battery reconnection, fully raise the glass - the taildoor glass is now recalibrated (if the glass is not fully raised, an error 'beep' will sound).

Sunroof

ELECTRIC SUNROOF*



H3312

The sunroof can be operated when the starter switch is turned to position 'II' and for up to 45 seconds after the starter switch is turned off (provided neither front door is opened in the meantime).

The roof opens in two separate phases as follows:

- **To tilt the roof:** Press the bottom half of the switch - the rear edge of the roof rises to the tilted position.
- **To open the roof:** With the sunroof fully tilted, press the bottom half of the switch - the roof remains tilted and slides towards the rear until fully open or the switch is released.

To close the roof: press the upper half of the switch - the sunroof will first close to the tilted position, then it will return the tilted roof to the fully closed position. The sunroof can be stopped (at any position) by releasing the switch.

WARNING

Accidental closure of a sunroof on fingers, hands or any vulnerable part of the body, can result in serious personal injury. Always observe the following precautions:

- **ENSURE** that passengers are kept clear when operating the sunroof and that the sunroof is not obstructed when opening or closing.
- **ENSURE** that all adult passengers are familiar with the controls and the potential dangers of operating an electrically operated sunroof.
- **DO NOT** allow passengers to extend any part of their bodies through the sunroof aperture while the vehicle is moving.
- **NEVER** leave children alone in the vehicle as this could result in injury or even death.
- **Do not** open the sunroof if the load on the roof rack will impede its operation.

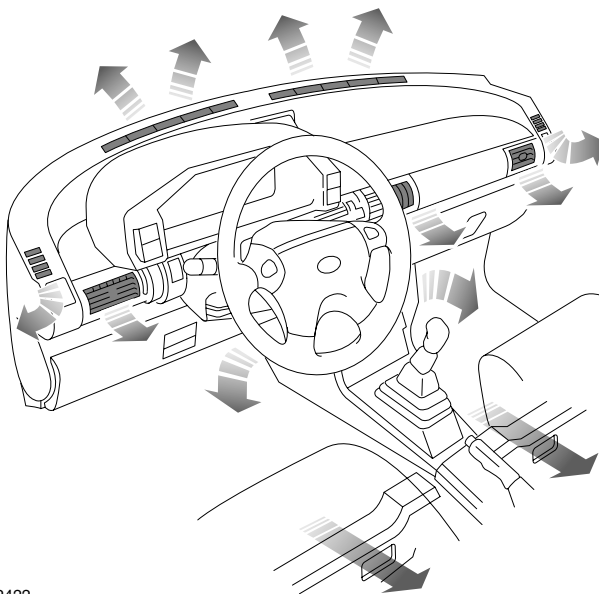
CAUTION: Do not operate the sunroof in freezing conditions, or when the roof panel is covered in ice or snow.

Sunroof visor

The sunroof visor must be opened and closed manually.

Heating & Ventilation

VENTILATION



H2422

The ventilation system provides fresh or heated air to the interior of the vehicle from the air intake grille in front of the windscreen.

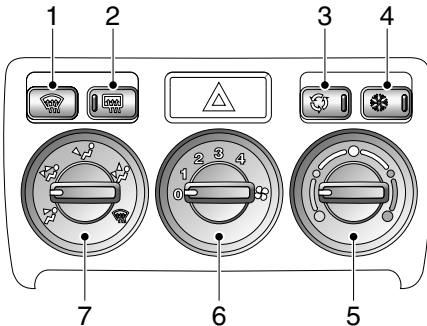
NOTE: Always keep the air intake grille clear of obstructions such as leaves, snow or ice.

Air outlets are provided to the windscreen, face and feet - the location of the vents is shown in the illustration above. The temperature of the air is controlled by the heater.

Information concerning the operation of the heating and ventilation system, as well as the air conditioning, appears on the pages that follow.

Heating & Ventilation

HEATER CONTROLS



H3317A

1. Heated front screen *

Press to operate; the indicator light in the switch illuminates whenever the heater is on and extinguishes when the heater is turned off.

NOTE: *The front screen heater will operate only when the engine is running and will switch off automatically after approximately 10 minutes.*

2. Rear screen demister

Press to operate; the indicator light in the switch illuminates whenever the demister is on and extinguishes when the demister is turned off.

NOTE: *The rear screen demister will operate only with the taildoor fully closed and when the engine is running and will switch off automatically after approximately 15 minutes.*

NOTE: *DO NOT stick labels over the heating elements, and DO NOT scrape or use abrasive materials to clean the inside of the window.*

3. Air recirculation button *

Press to recirculate air inside the vehicle (indicator light illuminates).

The air recirculation mode prevents the heating system from taking in fresh air from outside the vehicle. Instead, the air already inside the vehicle is recirculated, thus preventing the entry of traffic fumes. In cold weather air recirculation also enables warmer air to be used to defrost the windscreen when the engine is still cold.

WARNING

The air recirculation mode can cause the windscreen to mist. If this happens, switch off air recirculation immediately.

4. Air conditioning

With the engine running, press to operate. The indicator light in the switch illuminates when the air conditioning is switched on.

5. Air temperature control

Rotate the control clockwise (towards the RED segments) to increase the air temperature, or anti-clockwise (towards the BLUE) to reduce the temperature.

6. Air blower control






Turn the control clockwise to progressively increase the blower speed.

NOTE: *With the control in position '0', the volume of air entering the vehicle is dependent on driving speed alone.*

Heating & Ventilation

7. Air distribution control

Rotate to select air distribution:

-  Air to face vents
(to ensure best performance, the face level vents must be fully open)
-  Air to face vents and foot outlets
(to ensure best performance, the face level vents must be fully open)
-  Air to foot outlets
-  Air to foot outlets and windscreen
(if the ambient temperature is approximately 41° F (5° C) or higher, the air conditioning will automatically dehumidify the air to reduce misting).
-  All air to windscreen
(if the ambient temperature is approximately 41° F (5° C) or higher, the air conditioning will automatically dehumidify the air to reduce misting).

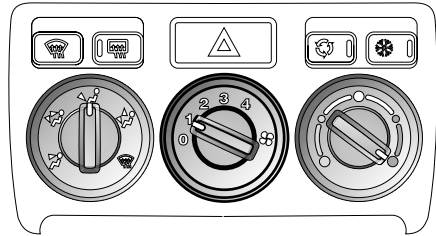
USING YOUR HEATER

Fresh air enters the heater unit through the grille in front of the windscreen and stale air is drawn out through vents in the rear of the vehicle. Ducts beneath the front seats provide heating for rear seat passengers - these must not be obstructed.

The following examples of basic heater settings are intended as a general guide; the air distribution, temperature and blower controls can then be further adjusted to suit your comfort requirements.

Always remember that full heating is not available until the engine has reached its normal operating temperature.

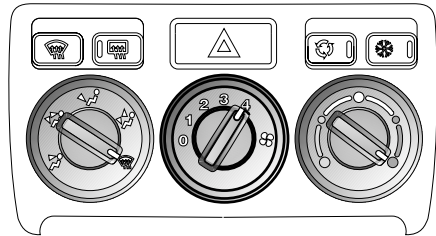
Maximum heating



H3318A

Set the controls as shown, with the blower at the slowest speed (position 1) until the temperature gauge indicates that the engine is warming up - the blower speed can then be increased.

Demisting



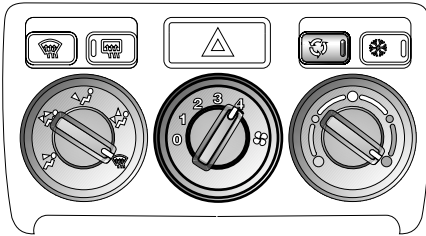
H3319A

Set the controls as shown, to obtain the maximum flow of heated air from the windscreen and side window vents.

Opening a window may improve ventilation.

Heating & Ventilation

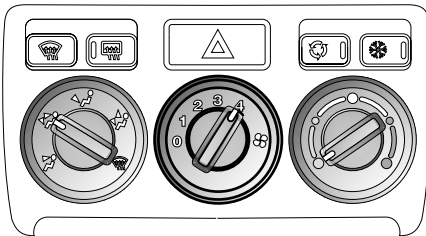
Defrosting



H3320A

Set the controls as shown and switch on air recirculation to prevent cold air from being drawn into the vehicle. Turn air recirculation off as soon as the windscreen is clear, to prevent any possibility of the windscreen misting.

Maximum ventilation

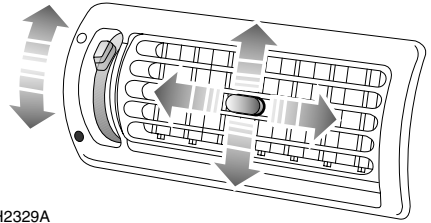


H3321A

Set the controls as shown, with the face level vents open.

Adjust the blower speed as required.

FACE LEVEL VENTS



H2329A

Rotate the thumbwheel down to open or up to close the vents. Direct the air flow by moving the control in the centre of the louvres up or down, or from side to side.

To increase output from the centre face vents, shut the outer vents.

When carrying rear seat passengers, use the outer vents for the front seat occupants and use the more powerful centre vents for the rear seat passengers.

WARNING

Driving with the taildoor or taildoor window open is not recommended because poisonous exhaust fumes will be drawn into the vehicle (see 'Accommodating long loads', page 103 for advice).

Heating & Ventilation

AIR CONDITIONING

The air conditioner provides additional cooling and also reduces humidity. This can be used to demist windows quickly in damp weather and, when used in conjunction with the heater, makes the interior of the vehicle warm and dry.

NOTE: *In high humidity conditions, slight screen misting may be experienced when the air conditioning is turned on. This is a natural occurrence for most automotive air conditioning systems; it is not a fault with the system and will clear after a few seconds, once the air conditioning is operating.*

Using the air conditioning

The air conditioning can only be used when the engine is running. For the air conditioning system to operate efficiently, all windows (and the sunroof) should be closed, and the air intake vents free from ice, snow, leaves and other debris.

With the engine running, press the 'A/C' button, and adjust the air distribution, air temperature and blower controls as required.

NOTE: *The air conditioner will only operate when the blower is switched on.*

Operation of the air conditioning system places an extra load on the engine. In very hot conditions or when the engine is required to work unusually hard (climbing long hills or driving in congested traffic, for example), this could result in high engine temperatures. If the pointer nears the RED zone of the temperature gauge, temporarily turn the air conditioning off until engine temperatures return to normal.

NOTE: *Under extreme conditions, the air conditioning may automatically switch off, to prevent damage to the engine.*

Rapid cooling:

With the engine running press the 'A/C' button, turn the air temperature control to the BLUE segment, select air recirculation and turn the blower switch to 4. Turn off air recirculation and adjust the blower when the vehicle interior is cool.

NOTE: *In very hot conditions, it may be advisable to fully ventilate the vehicle by opening the windows and sunroof for a while before closing them again and operating the air conditioning.*

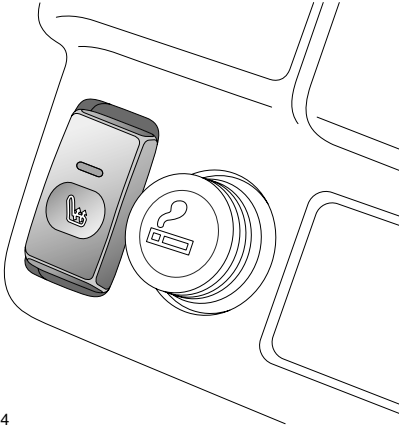
Maintaining the air conditioning

The air conditioning system is sealed and major maintenance should only be carried out by a qualified technician. To maintain the system in peak condition, owners should ensure that the system is operated for a short period every week (even during the cold winter months); with the engine at its normal operating temperature, run the air conditioning for at least ten minutes whilst driving at a steady speed.

Surplus water produced by the dehumidifying process is expelled from the system via drain tubes beneath the vehicle. This may result in a small pool of water forming on the road when the vehicle is stationary and is not a cause for concern.

Heating & Ventilation

HEATED FRONT SEATS*



H3494

With the starter switch turned on and the engine running, press the switches to operate the heating elements in either the driver's or front passenger seat (the indicator light in the switch illuminates). Press a second time to switch off.

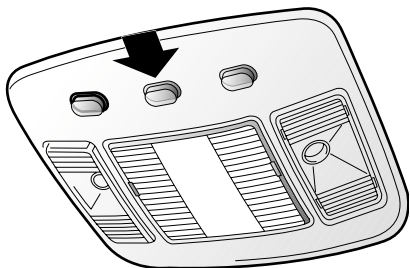
NOTE: *The seat heaters will switch off automatically 15 seconds after the starter switch is turned off.*

The seat heaters are thermostatically controlled and operate intermittently to achieve and then maintain a predetermined temperature between 79° F and 97° F (26° C and 36° C).

NOTE: *Owners should be aware that the seat heaters consume considerable power from the battery and for this reason, it is recommended that they are operated only with the engine running.*

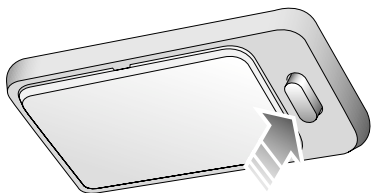
Interior Equipment

COURTESY & MAP READING LIGHTS



H2352A

Front courtesy and map reading lights



H2593

Rear courtesy light

Press the appropriate switch to illuminate (or extinguish) the lights manually.

The front and rear lights illuminate automatically when the vehicle is unlocked or whenever a door or taildoor is opened, and extinguish approximately 15 seconds after ALL the doors are closed, or as soon as the starter switch is turned on.

If a door or the taildoor remains open for ten minutes or more, a 'time out' function will extinguish the courtesy lights in order to prevent the battery from discharging.

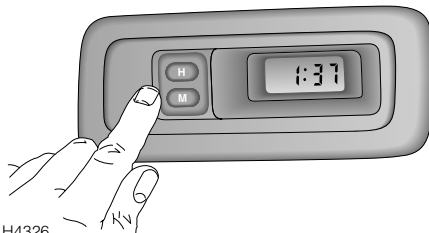
NOTE: If the map reading lights or rear courtesy light are left on after being manually selected, they will NOT extinguish automatically.

The courtesy lights will extinguish when the vehicle is locked.

LUGGAGE COMPARTMENT LIGHT

Illuminates automatically when the taildoor is opened.

CLOCK



H4326

The digital clock display illuminates when the starter switch is turned on and dims for night viewing when the sidelights are switched on.

With the starter switch turned to position '1', depress the hour ('H') and minute ('M') buttons to set the time. If both buttons are pressed together, the display will change between 24 hour and 12 hour displays.

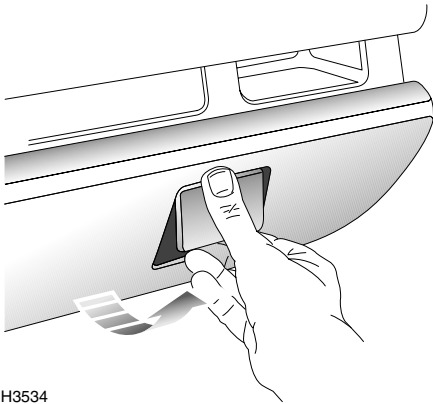
NOTE: If the battery is disconnected, the clock will need to be reset.

Interior Equipment

GLOVEBOX

WARNING

DO NOT drive with the glovebox open. An open glovebox could cause injury to the front seat passenger in the event of a collision.



H3534

Lift the handle to open the glovebox.

The left hand compartment in the glovebox can be used to store CD cases.

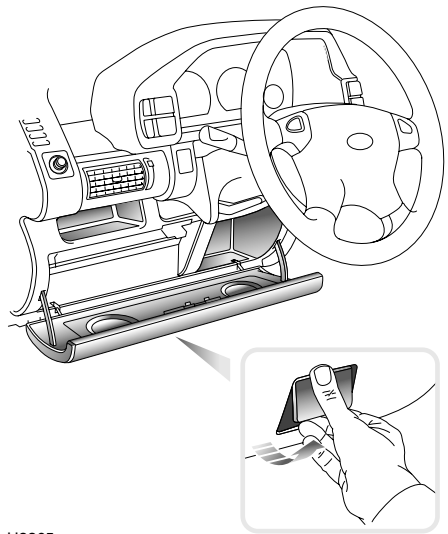
Glovebox light

Operates automatically when the exterior lights are switched on and the passenger glovebox is opened.

DRIVER'S STORAGE AREA

WARNING

DO NOT drive with the storage area open. The storage area lid could cause serious injury in the event of a collision.



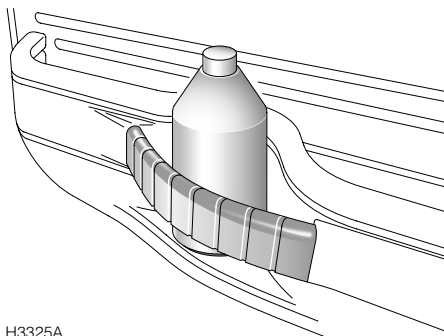
H3365

Lift the handle to open the driver's storage area - only when the vehicle is stationary.

The left hand compartment in the storage area can be used to store tape and CD cases.

Interior Equipment

DRINKS STOWAGE



H3325A

The expanding strap fitted to the front door stowage compartments can be used to store drink containers securely when driving.

NOTE: Drink containers over 0.5 litre capacity will not be properly secured by the strap.

WARNING

Do not use the strap to store hot drinks.

CUP HOLDERS

WARNING

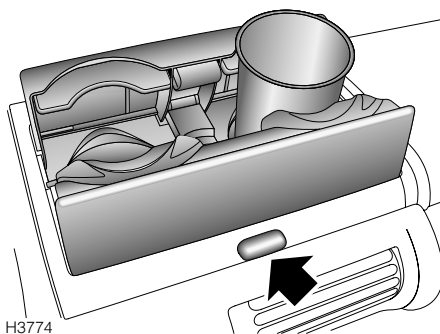
The driver should not drink while driving.

DO NOT carry open-top drink containers in the cup holders while the vehicle is in motion; a spilled hot drink could cause personal injury. Spilled drinks can also damage upholstery, carpeting and electrical components.

DO NOT place anything other than soft containers in the cup holders. **DO NOT** use to hold cups made of glass, china or hard plastic, as these items may be thrown about in the passenger compartment and possibly injure occupants in the event of an accident or emergency manoeuvre. Unopened sealed containers (drinks cans, for example) are hard objects and may also cause injury.

If the cup holder is retractable, it should be kept closed when not in use.

Front cup holders*

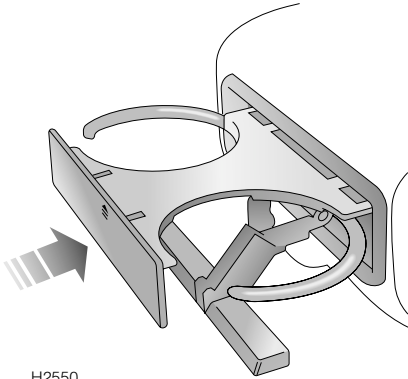


H3774

Interior Equipment

Press the button (arrowed) to open the cup holder. Push the flap centrally to close. The rubber mats inside the holder can be removed for cleaning.

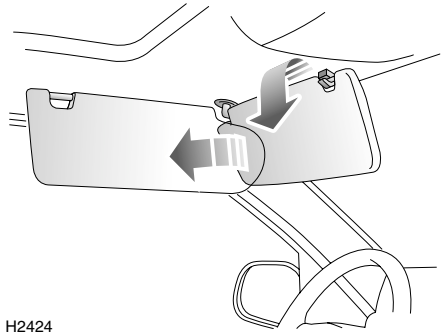
Rear cup holders



H2550

With the centre armrest lowered, press the front of the cup holder to open. The retaining arms can be adjusted to suit a range of container sizes. Press the front of the cup holder again to close.

SUN VISOR



H2424

To shield your eyes from the sun, pull the visor down from the roof; the visor can be used to shield the upper part of the windscreen or the side window as required.

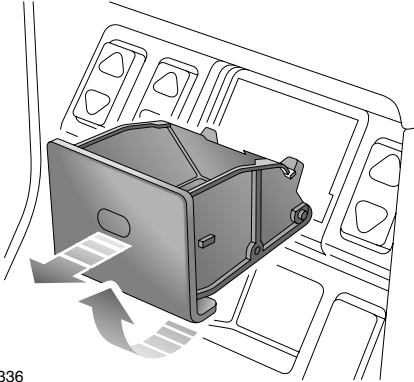
NOTE: On some models, the sun visors are fitted with a vanity mirror on the underside.

Interior Equipment

ASHTRAY

WARNING

DO NOT use the ashtray for disposing of waste paper or other combustible items.



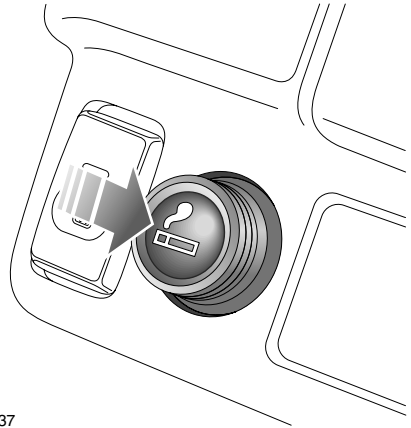
H3336

Front ashtray illustrated

Push to access the front or rear ashtray. To remove for emptying; with the ashtray open, carefully pivot the ashtray upwards and withdraw it from the aperture.

To refit the ashtray, partially insert the tray into the aperture, then pivot downwards before pushing the ashtray closed.

CIGAR LIGHTER*



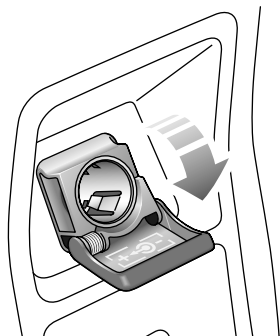
H3337

With the starter switch turned on, press the lighter in to heat up. When it has reached the correct temperature it will partially eject and can then be withdrawn for use.

- ONLY hold the cigar lighter by the handle.
- DO NOT plug accessories into the cigar lighter socket unless they are approved for that purpose by Land Rover.

Interior Equipment

AUXILIARY POWER SOCKET



H3327

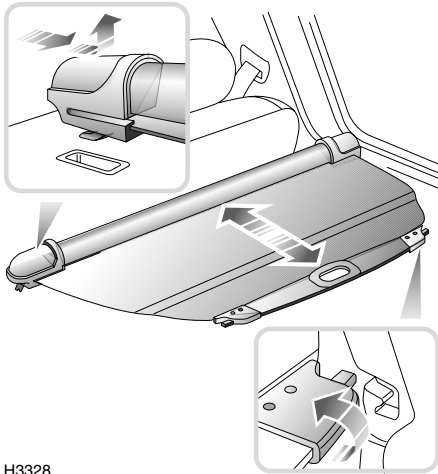
An auxiliary power socket is mounted in the centre console, above the rear ashtray. This can be used to power Land Rover approved accessories that use a maximum of 180 watts.

Always run the engine during prolonged use of electrical accessories, otherwise the battery may become discharged.

CAUTION: NEVER plug non-approved accessories into the power socket - damage to the vehicle's electrical systems could occur.

Loadspace Cover

LOADSPACE COVER*



H3328

The rear loadspace can be covered by a spring loaded roller blind, which can be retracted when not in use by detaching the cover from the hooks at the rear of the vehicle (see lower inset).

To remove the loadspace cover:

1. Slide the retracted cover firmly to the right.
2. Lift the left hand end of the cover from its location.
3. Carefully manoeuvre the cover from the rear of the vehicle.

Refitting the loadspace cover is the reverse of the removal procedure.

NOTE: Removal of the loadspace cover may be eased by folding the rear seat backrest forward.

WARNING

DO NOT carry loose items of luggage on top of the loadspace cover - these may obscure vision and could become dangerous projectiles in the event of a sudden stop or collision.

All equipment, luggage or tools carried in the loadspace should be secured to reduce the risk of injury to the driver and passengers in the event of an accident or emergency manoeuvre.

DO NOT store the loadspace cover loose in the vehicle.

In-Car Telephones

IN-CAR TELEPHONES

For your safety, always note the following precautions before fitting or using an in-car telephone, or any mobile communication equipment.

- Only use an installation kit incorporating an aerial external to the vehicle.
- Ensure that the installation is carried out by a competent installer.

WARNING

Using any hand-held appliance while driving can be dangerous. Always stop the vehicle before making a call and ensure the telephone is switched off while you are driving.

In-Car Entertainment

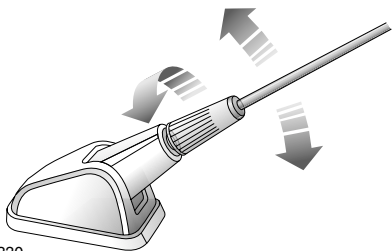
RADIO/CASSETTE PLAYER

NOTE: Full operating instructions for any audio equipment fitted as standard to your vehicle, are contained in the 'In-car Entertainment' book in the literature pack.

CD autochanger*

The CD autochanger is located under the front right hand seat. Full operating instructions are contained in the 'In-car Entertainment' book in the car literature pack.

RADIO AERIAL



Your vehicle is equipped with a detachable mast aerial, mounted on the roof.

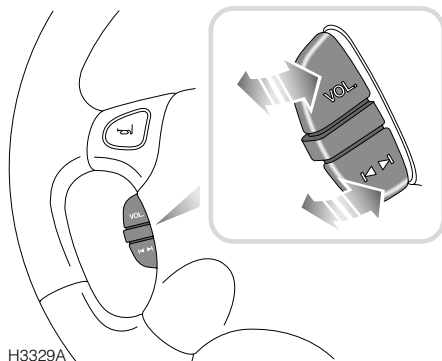
NOTE: ALWAYS unscrew and remove the aerial before entering an automatic car wash.

Aerial height

Always check the available headroom and, if necessary, adjust the angle of the aerial (see illustration) before entering or leaving a garage or car park with insufficient headroom.

NOTE: The aerial of the navigation system* (if fitted) cannot be adjusted for height.

REMOTE AUDIO CONTROLS*



Volume control

Lift or press down to increase or decrease volume.

Search control

Lift or press down to search for the next or previous radio station on the selected waveband.

During CD play, lift the control to move forward to the next track, or press down to return to the start of the current track. Operate the control repeatedly to move forward or back through several tracks at a time.

NAVIGATION SYSTEM*

NOTE: Full operating instructions for the navigation system, if fitted to your vehicle, are contained in the 'Audio and Navigation System' book in the literature pack.

Driving & Operating

Starting & Driving

STEERING COLUMN LOCK	79
STARTER SWITCH.....	79
STARTING	80
DRIVING	81
FUEL ECONOMY	82
EMISSION CONTROL SYSTEM	83

Fuel System

TYPE OF FUEL	84
GAS STATION SAFETY.....	85
FUEL FILLER	85
FUEL FILLING	86
EMPTY FUEL TANK	86
FUEL CUT-OFF SWITCH.....	86

Catalytic Converter

CATALYTIC CONVERTER	87
---------------------------	----

Automatic Gearbox

CommandShift™ TRANSMISSION	89
GEAR SELECTOR LEVER	89
USING AN AUTOMATIC GEARBOX	91
AUTOMATICALLY SELECTED MODES.....	93

Hill Descent Control

HILL DESCENT CONTROL	94
----------------------------	----

Cruise Control

CRUISE CONTROL.....	96
---------------------	----



Brakes

FOOT BRAKE	98
PARKING BRAKE	99
ANTI-LOCK BRAKES	99

Traction Control

ELECTRONIC TRACTION CONTROL	101
---------------------------------------	-----

Load Carrying

LUGGAGE ANCHOR POINTS	102
STOWAGE BOX	102
FOLDING THE REAR SEATS	103
VEHICLE LOADING	105
ROOF RACK	105

Towing

TOW BARS	106
TOWING A TRAILER	106