

Keys and remote controls

PRINCIPLE OF OPERATION



E81023

You have been supplied with two remote controls, with integral keys, to operate all the vehicle's locks.

The operation of all buttons on all remote controls is inhibited when a key is in the starter switch.

Note: *Interference from other radio equipment, operating on a similar frequency may affect the remote control. If this happens, operate the remote control as close as possible to the vehicle or use the key.*

Note: *If the remote control fails to work even when close to the vehicle, it may not be synchronised with the system. Start and run the engine for six minutes to synchronise. If the remote control still fails to operate, unlock the vehicle manually. See **USING THE KEY** (page 40).*

Remote control battery

CAUTION

⚠ The remote control contains delicate electronic circuits and must be protected from impact, water damage, high temperatures and humidity, direct sunlight and the effects of solvents, waxes and abrasive cleaners.

The battery is rechargeable. If the battery needs recharging the following will occur:

- **KEY BATTERY LOW** will be displayed in the main message centre.
- You will notice a gradual deterioration in range and performance.

To recharge the battery, insert the key in the starter switch and start the engine.

PROGRAMMING THE REMOTE CONTROL

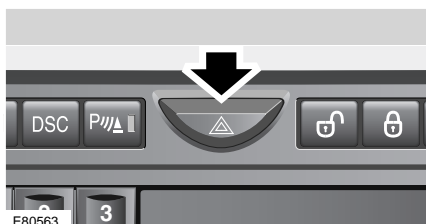
The Land Rover button on the remote control can be programmed to operate any one of the following functions:

- Panic alarm.
- Headlamp courtesy delay.
- Air suspension control.

The currently-programmed feature will be activated when the reprogramming sequence is started.

The button is disabled when the key is in the starter switch.

Panic alarm



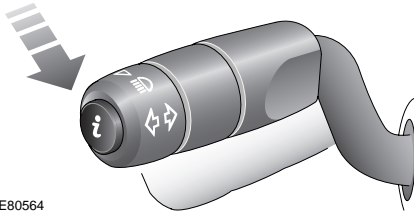
Press and hold the Land Rover button and press the hazard warning switch. A chime will confirm the feature is programmed.

The alarm will sound and the hazard warning lamps will flash when the button is pressed.

Press the lock or unlock buttons or insert the key in the starter switch, to switch off the alarm.

Keys and remote controls

Headlamp courtesy delay



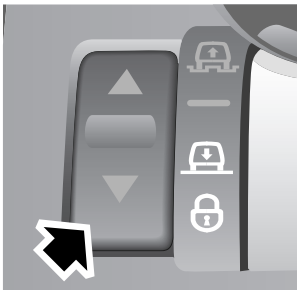
E80564

Press and hold the Land Rover button and flash the headlamps. A chime will confirm successful programming.

A short press of the Land Rover button will turn on the headlamps for the length of time specified in Settings. See **TRIP COMPUTER** (page 107).

A second press of the button after three seconds, will deactivate the lamps.

Air suspension control



E90801

Press and hold the Land Rover button and press the suspension raise/lower switch. A chime will confirm the feature is programmed.

Programming of this function must be done within one minute of switching off the engine.

Before attempting to raise or lower the suspension, turn on the hazard warning lamps and close all the doors.

To raise the suspension, press and hold the Land Rover button and the lock button.

To lower the suspension, press and hold the Land Rover button and the unlock button.

If any button is released during the raising or lowering, all movement will stop, until the buttons are pressed again.

Initially the height will change slowly, but will increase after three seconds.

While the height is changing, a symbol on the raise/lower switch will be lit, according to the direction of movement. See **ADJUSTING THE SUSPENSION** (page 167).

If the suspension is not set to On-road height, all movement will stop when On-road height is reached. Release the buttons and press again, to continue. See **ADJUSTING THE SUSPENSION** (page 167).

Single-point entry

This feature enables the driver's door to be unlocked, while leaving the other doors locked.

Single-point entry can be disabled on individual remote control keys, by pressing and holding the lock and unlock buttons for three seconds. All doors will now unlock with a single press.

Repeating the procedure above will re-enable single point entry.

Each time single-point entry is enabled or disabled, the vehicle will lock then unlock into the selected mode.

Keys and remote controls

GENERAL INFORMATION ON RADIO FREQUENCIES

Note: The radio frequency used by your remote control may be used by other devices. For example, amateur radios, medical equipment, wireless head phones or other remote control devices. This may cause the frequency to be jammed and prevent your remote control from operating correctly.

Environmental conditions can affect the operation of remote controls, and the operating range may vary considerably depending on the vehicle's location.

USING THE KEY

WARNING

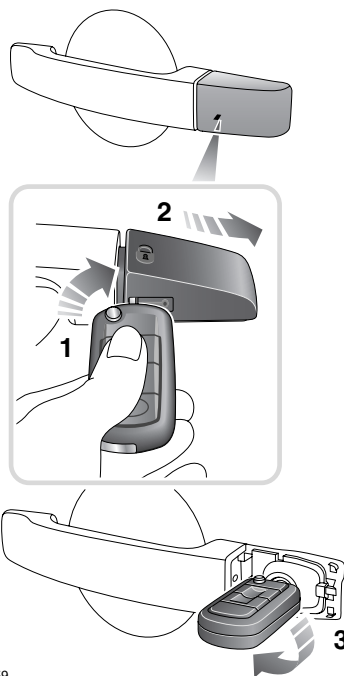


Never leave the remote control in the vehicle if children or animals are also left in the vehicle. The vehicle's systems and remote control functions could be operated, which may result in injury.

Note: The operational range of the remote control will vary considerably depending on atmospheric conditions and interference from other transmitting devices.

Emergency locking and unlocking

Under a removable cap on the left front door outer handle, there is an emergency-use door lock.



E91959

1. Insert the key fully into the slot under the cap and turn clockwise to release the forward edge of the cap.
2. Remove the cap and withdraw the key.
3. Insert the key into the emergency lock, and turn counterclockwise to unlock.

If the alarm is armed, it will sound when the door is unlocked. Insert the key in the starter switch to stop the alarm.

To lock the vehicle in an emergency, reverse the steps above.